



Report on SBLF Participants' Small Business Lending Growth

***Submitted to Congress pursuant to Section 4106(3) of
the Small Business Jobs Act of 2010***



OVERVIEW

Small businesses are a vital part of the American economy and their success is a critical component of the economic recovery. Established by the Small Business Jobs Act of 2010 (the Act), the Small Business Lending Fund (SBLF) is a dedicated fund designed to provide capital to qualified community banks¹ and community development loan funds (CDLFs) in order to encourage small business lending. The purpose of the SBLF is to encourage Main Street banks and small businesses to work together, help create jobs, and promote economic growth in communities across the nation.

This report provides information on changes in small business lending by SBLF participants as of September 30, 2013, relative to baseline levels.² As of September 30, 2013, institutions participating in SBLF have made important progress in increasing their small business lending, helping to support small businesses and local economies across the nation.

- **In total, SBLF participants have increased their small business lending by \$11.2 billion over a \$35.1 billion baseline, and by \$819 million over the prior quarter.**
- **Increases in small business lending are widespread across SBLF participants, with 93 percent of participants having increased their small business lending over baseline levels.**
- **Most participants report that their small business lending increases have been substantial, with 90 percent increasing small business lending by 10 percent or more.**

This report also provides information on changes in business lending and other lending by SBLF banks relative to (i) a representative peer group of 490 community banks that were selected to match the specific size, geography, and financial condition of SBLF banks and (ii) a broader comparison group of the 6,045 similarly-sized community banks that are headquartered in the same states as SBLF banks.

- **SBLF banks have increased business loans outstanding by a median of 52.1 percent over baseline levels, versus an 11.4 percent median increase for the representative peer group and a 7.2 percent median increase for the broader comparison group.**
- **SBLF banks have increased business lending by substantially greater amounts across median measures of size, geography, loan type, and financial condition versus the peer and comparison groups.**
- **SBLF banks that refinanced CPP funding have increased business lending by a median of 44.2 percent since their initial receipt of CPP funding from Treasury versus an 18.4 percent increase for the peer group and an 11.8 percent increase for the comparison group over the same period.**

Please see Appendix A for additional information regarding the methodology employed in this report.

¹ In this report, the terms “banks” and “community banks” encompass banks, thrifts, and bank and thrift holding companies with consolidated assets of less than \$10 billion.

² As established in the Act, the baseline for measuring the change in small business lending is the average of the amounts that were reported for each of the four calendar quarters ended June 30, 2010.

BACKGROUND

This report is submitted to Congress pursuant to Section 4106(3) of the Act, which directs the Secretary of the Treasury to provide a quarterly written report on how institutions participating in the SBLF program have used the funds they received under the program.

Treasury invested over \$4.0 billion in 332 institutions through the SBLF program. These amounts include investments of \$3.9 billion in 281 community banks and \$104 million in 51 CDLFs. Collectively, these institutions operate in over 3,000 locations across 48 states. This report includes information on the 307 institutions that continued to participate in the program as of October 31, 2013, including 257 community banks and 50 CDLFs. The initial disbursement of SBLF funding to banks occurred on June 21, 2011, with subsequent transactions completed thereafter until the program's September 27, 2011 statutory funding deadline.

As of December 1, 2013, 26 institutions with aggregate investments of \$394.6 million have fully redeemed their SBLF securities and exited the program, and 17 institutions have partially redeemed \$147.5 million (or 42 percent of their SBLF securities) though continue to participate in the program. To date, redemptions have resulted in only a modest change in reported qualified small business lending (\$105 million) as the reductions in the reported baseline and then-current quarter small business amounts at the time of exit were equal to \$5.6 billion and \$5.5 billion, respectively.

The SBLF program encourages lending to small businesses by providing capital to community banks and CDLFs with less than \$10 billion in assets.

- For community banks, the SBLF program is structured to encourage small business lending through a dividend or interest rate incentive structure. The initial rate payable on SBLF capital is, at most, 5 percent, and the rate falls to 1 percent if a bank's small business lending increases by 10 percent or more.³ Banks that increase their lending by amounts less than 10 percent pay rates between 2 percent and 4 percent. If a bank's lending does not increase in the first two years, however, the rate increases to 7 percent. If a bank has not repaid the SBLF funding after four and a half years, the rate increases to 9 percent.
- For CDLFs, the SBLF program is structured to encourage small business lending through access to low-cost capital at a 2 percent interest rate. These non-profit loan funds play a critical role in distressed communities across the country that lack access to mainstream financial services. CDLFs engage in activities including offering microloans to entrepreneurs, providing mezzanine debt to growing small businesses, and financing community facilities like charter schools and health clinics.

As established in the Act and described above, the SBLF program operates through an indirect mechanism to achieve policy outcomes. The additional lending capacity provided by SBLF capital – coupled with the program's dividend or interest rate incentives in the case of community banks – encourages institutions to increase small business lending. Because of the program's structure, increases in small business lending cannot be directly linked to the use of SBLF funds. However, the program's impact can be observed indirectly. Accordingly, this report provides information

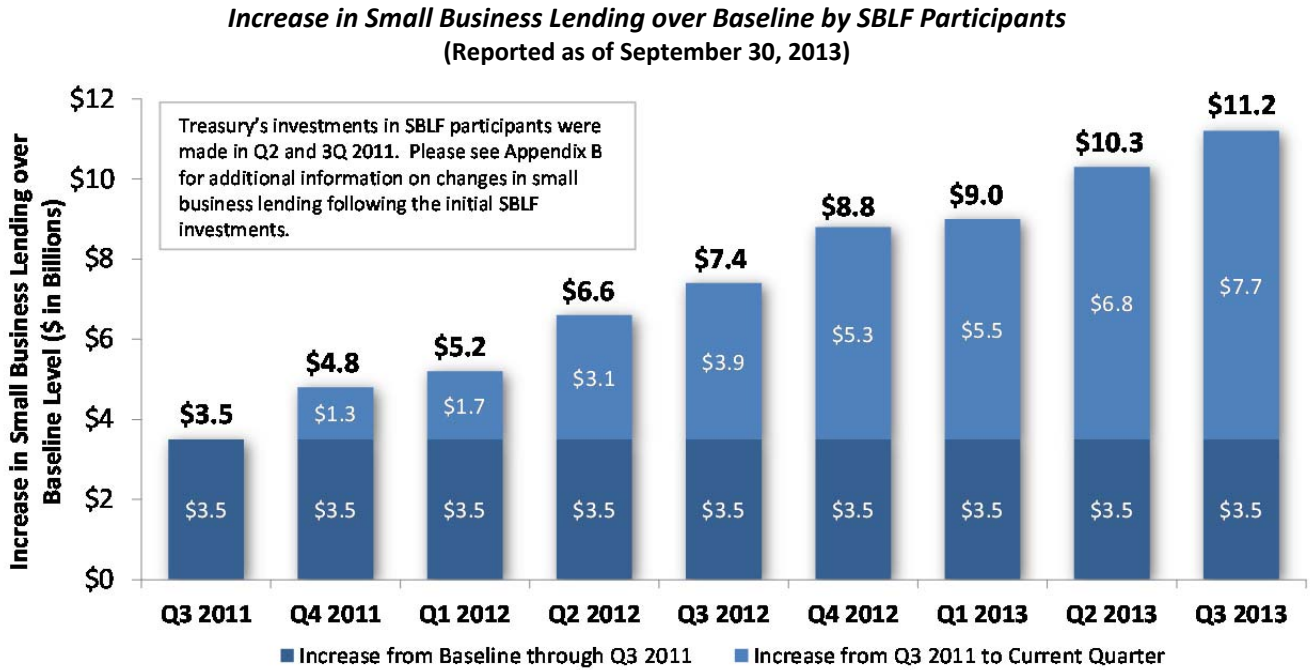
³ The initial interest rate paid by S corporations and mutual institutions is, at most, 7.7 percent. If these institutions increase their small business lending by 10 percent or more, then the rate falls to as low as 1.5 percent. These interest rates equate to after-tax effective rates (assuming a 35% tax rate) equivalent to the dividend rate paid by C corporation participants.

regarding aggregate increases in small business lending as well as a comparison of outcomes between program participants and a peer group matched on key characteristics. For additional information regarding the methodology employed in this report, please see Appendix A.



INCREASES IN SMALL BUSINESS LENDING OVER BASELINE LEVELS

As of September 30, 2013, SBLF participants have increased their small business lending by \$11.2 billion over their aggregate baseline of \$35.1 billion. Bank participants have increased their small business lending by \$10.9 billion (or 32 percent) over a \$34.3 billion baseline, and CDLFs increased their small business lending by \$304.1 million (or 38 percent) over a \$794.0 million baseline. The following graph shows the aggregate increase in qualified small business lending reported by SBLF participants as of September 30, 2013.

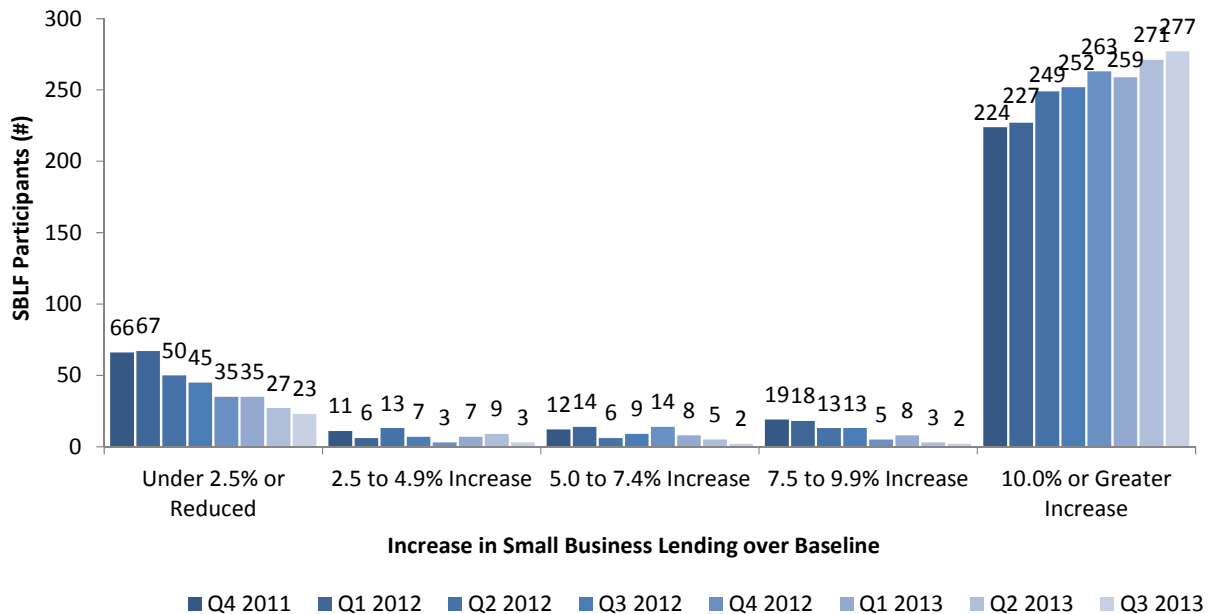


Increases in small business lending are widespread among SBLF participants. To date, 241 of the 257 participating community banks (or 94 percent) and 46 of the 50 CDLFs (or 92 percent) have increased their small business lending. In addition, 277 of the 307 SBLF participants (or 90 percent) have increased their small business lending by 10 percent or more.

The graph on the following page shows quarter-over-quarter changes in the number of participants reporting lending in the five ranges of small business loan growth that correspond to various dividend or interest rates payable on SBLF securities.



SBLF Participants Reporting Increases in Small Business Lending over Baseline⁴
(Reported as of September 30, 2013)



To achieve the lowest available dividend or interest rate under the SBLF program terms (the “program incentive”), participants would have needed to increase small business lending in aggregate by at least \$4.5 billion.⁵ As of September 30, 2013, the \$11.2 billion increase achieved over baseline levels is approximately 2.5 times greater than the \$4.5 billion program incentive.⁶

The figures in this section reflect changes in small business lending over baseline levels as specified by the Act (defined as the loan balances that were reported for each of the four calendar quarters ended June 30, 2010). The first four of Treasury’s investments in SBLF participants were made in the quarter ended June 30, 2011, with all subsequent investments made in the quarter ended September 30, 2011. Please see Appendix B for additional information on changes in small business lending following the initial SBLF investments.

In the period between the baseline and the investment date, some participants increased lending, while others decreased. The Act, and the associated program terms, specified that an institution’s initial dividend or interest rate shall be based on call report data published in the quarter immediately preceding the date of the SBLF investment. Among other effects, this provision may have encouraged institutions to increase small business lending prior to entering the SBLF program, as they would receive the associated dividend or interest rate benefit immediately upon entry. At the same time, some institutions took actions (e.g., sales of loans or branches or reductions in loans

⁴ As a result of redemptions, the total number of SBLF institutions was 307 as of Q3 2013, 315 as of Q2 2013, 317 as of Q1 2013, 320 as of Q4 2012, 326 as of Q3 2012, 328 as of Q2 2012, and 332 as of Q1 2012 and Q4 2011.

⁵ Throughout this report, the term “program incentive” is defined as the aggregate increase that would be required for participants to receive the lowest available dividend or interest rate under the SBLF program terms.

⁶ As of September 30, 2013, some institutions have increased lending by more than their maximum program incentive, while others have increased by less or decreased. Please see Appendix C for institution-specific reporting of small business lending by SBLF participants.



outstanding) that reduced the amount of reported small business lending, such that their initial change in small business lending over their baseline was negative.

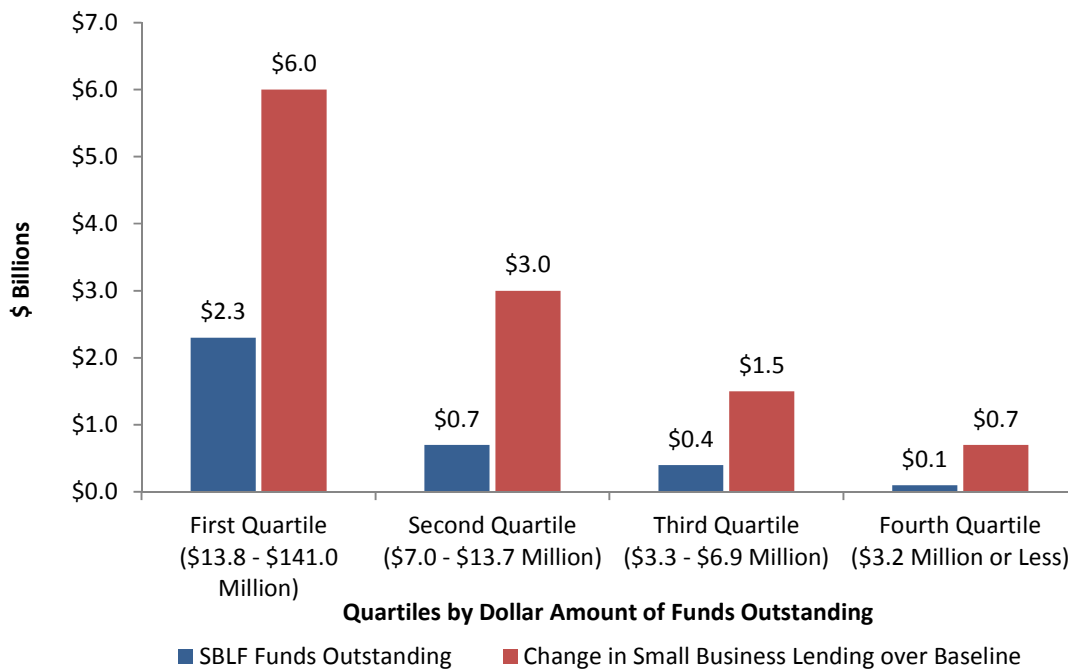
In total, 262 (79 percent) of SBLF participants increased lending by \$4.5 billion and 70 (21 percent) of participants decreased lending by \$991 million from the baseline period until the time of Treasury’s initial investments in the quarter ended June 30, 2011. Of the 20 participants (7 percent) that presently report negative changes in small business lending, six had reduced their small business lending in the period between the baseline and the investment date, though have since increased their lending above that initial level.

Distribution of Small Business Lending Increases by Quartile

Increases in small business lending are widespread among SBLF participants. The largest dollar value increases in small business lending have been made in aggregate by participants with the largest amount of SBLF funds outstanding. Funds outstanding is defined as the amount of funds received from SBLF minus funds that have been redeemed.

If ranked and grouped by the amount of SBLF funds outstanding, the 77 institutions that received \$14 million or more of SBLF funding accounted for \$6.0 billion of the total reported increase in small business lending with \$2.3 billion of funds outstanding. The following graph shows the changes in small business lending over baseline levels across four equally-sized groups of SBLF participants based on the dollar amount of their SBLF funds outstanding.

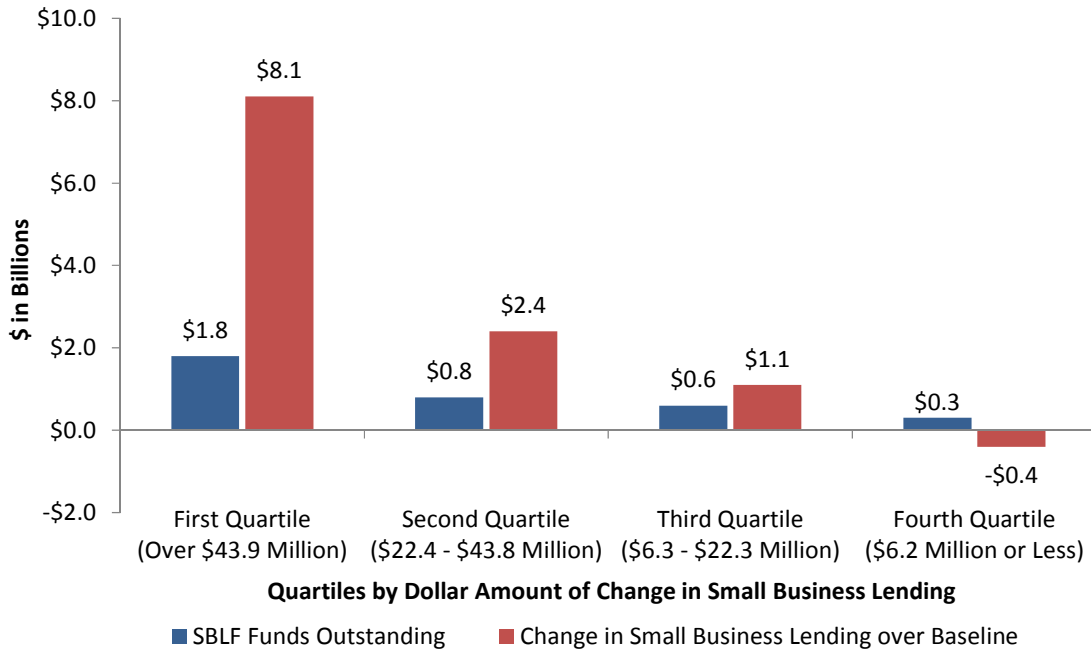
Changes in Small Business Lending by Dollar Amount of SBLF Funds Outstanding
(Reported as of September 30, 2013)



If ranked and grouped by the dollar value of changes in small business lending, the top quartile of participants accounted for \$8.1 billion of the gross reported increase in small business lending with \$1.8 billion of SBLF funds outstanding. The following graph shows the change in small business lending over baseline levels across four equally-sized groups of SBLF participants based on the dollar amount of their change in lending.



Increase in Small Business Lending by Dollar Amount of Lending Change
(Reported as of September 30, 2013)



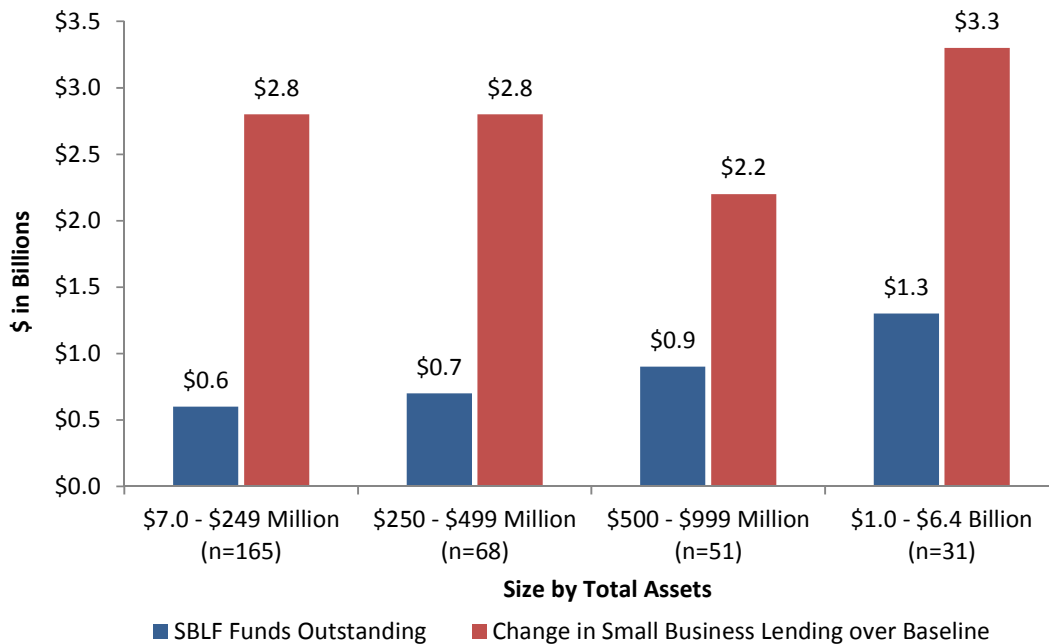
Distribution of Small Business Lending Increases by Institution Size

Small business lending increased among groups of institutions of all sizes (as defined by total assets), with the largest aggregate increases in dollar value reported by the largest institutions.⁷ The largest institutions (defined as those participants with more than \$1.0 billion in total assets) increased small business lending by \$3.3 billion while the smallest institutions (defined as those participants with less than \$250 million in assets) increased small business lending by \$2.8 billion. The following graph shows increases in small business lending over baseline levels and SBLF funds outstanding across four categories of institution size.

⁷ In this report, institution size (including the size ranges in this graph and the segmentation of institutions) is based on the total assets reported by banks as of March 31, 2011, the quarter immediately prior to Treasury’s first SBLF investment.



Increase in Small Business Lending by Institution Size
(Reported as of September 30, 2013)



Distribution of Small Business Lending Increases by Regional Geography

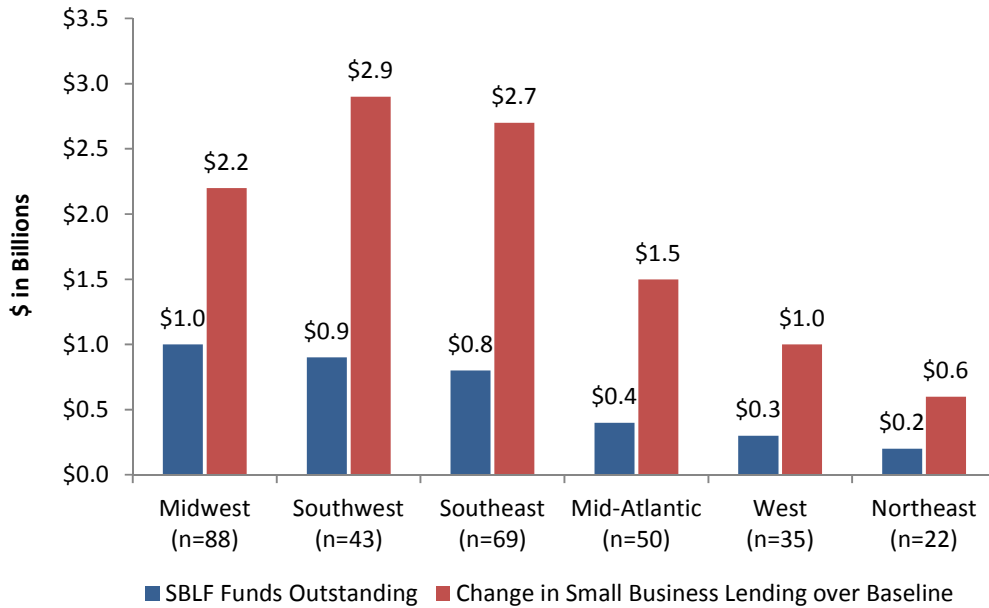
In each region of the country, SBLF participants reported aggregate increases in small business lending. Institutions in the Southwest reported the largest aggregate increase (\$2.9 billion) with one of the largest shares of SBLF funds outstanding (\$850 million).

The following graph shows increases in small business lending over baseline levels and SBLF funds outstanding across six geographic regions.⁸

⁸ In this report, the Midwest region includes: IA, IL, IN, KS, KY, MI, MN, MO, ND, NE, OH, SD, and WI. The Southwest region includes: AZ, CO, LA, NM, OK, TX, and UT. The Southeast region includes: AL, AR, FL, GA, MS, NC, TN, SC, VA, and WV. The Mid-Atlantic region includes: DC, DE, MD, NJ, NY, and PA. The West region includes: CA, ID, MT, NV, OR, WA, and WY. The Northeast region includes: CT, MA, ME, NH, RI, and VT.

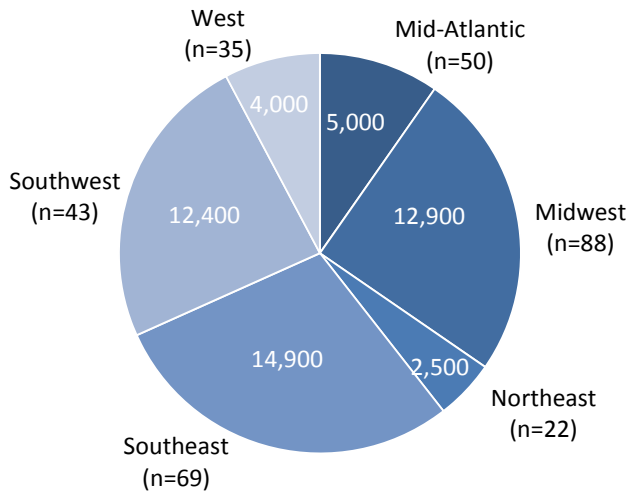


Increase in Small Business Lending by Regional Geography
(Reported as of September 30, 2013)



Based on the average loan size reported by participants in the *June 2013 Results of the First Annual Lending Survey*, the \$11.2 billion aggregate increase in small business lending represents an estimated 51,700 additional loans to small businesses.⁹ The following graph shows the estimated number of additional loans to small businesses by regional geography.

Estimated Number of Additional Loans to Small Businesses by Regional Geography
(Reported as of September 30, 2013)



⁹ The number of additional small business loans is calculated by dividing each participant’s change in small business lending as of September 30, 2013 by the average loan size the participant reported on its SBLF lending survey for the year ended June 30, 2012 and aggregating the resulting loan counts. The resulting aggregate is rounded to the nearest hundred loans.



COMPARISON OF LENDING BY SBLF BANKS AND NON-SBLF BANK GROUPS

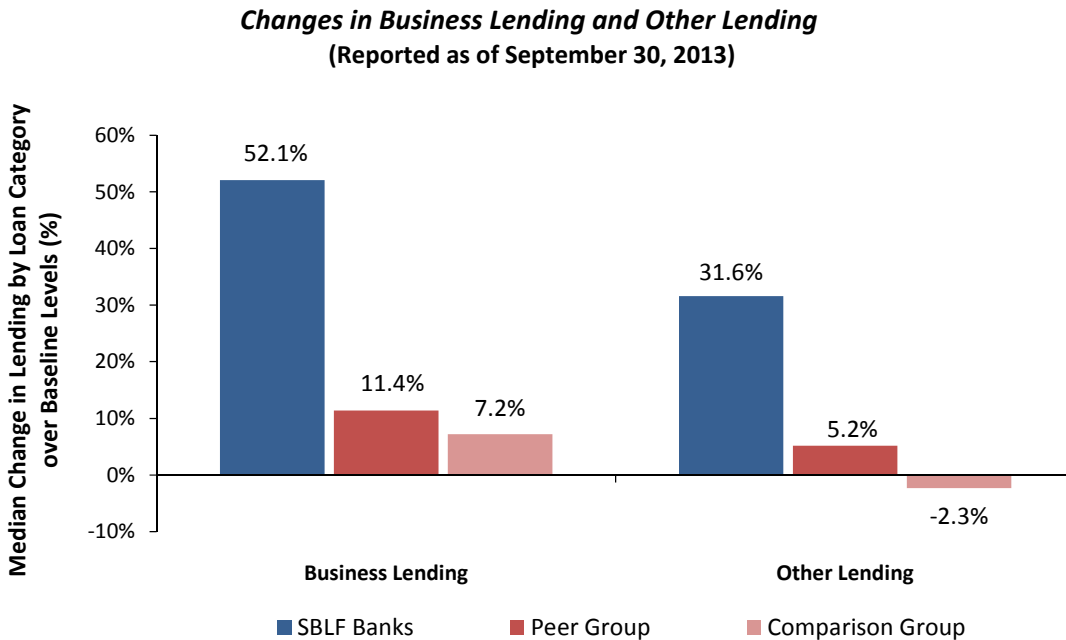
This section compares changes in business lending and other lending by SBLF banks relative to (i) a representative “peer group” of 490 community banks that were selected to match the specific size, geography, and financial condition of SBLF banks and (ii) a broader “comparison group” of all 6,045 similarly-sized community banks that are headquartered in the same states as SBLF banks and engaged in business lending. Please see Appendix A for additional information regarding the composition of the peer group and comparison group.

SBLF banks have increased business lending by substantially greater amounts than both the peer and comparison groups across median measures of size, geography, and loan type. SBLF banks also report a median increase in other (non-business related) types of lending, while the peer group shows a smaller median increase and the comparison group shows a decrease in such lending.

Overall Changes in Business Lending and Other Lending

Comparing the level of loans outstanding as of September 30, 2013 to their baseline levels, SBLF banks increased business lending by a median of 52.1 percent, versus an 11.4 percent median increase for the peer group and a 7.2 percent median increase for the comparison group. In addition to increasing business lending, SBLF banks increased other types of lending by a median of 31.6 percent over baseline levels, versus a median increase of 5.2 percent among the peer group and 2.3 percent decrease among the comparison group.

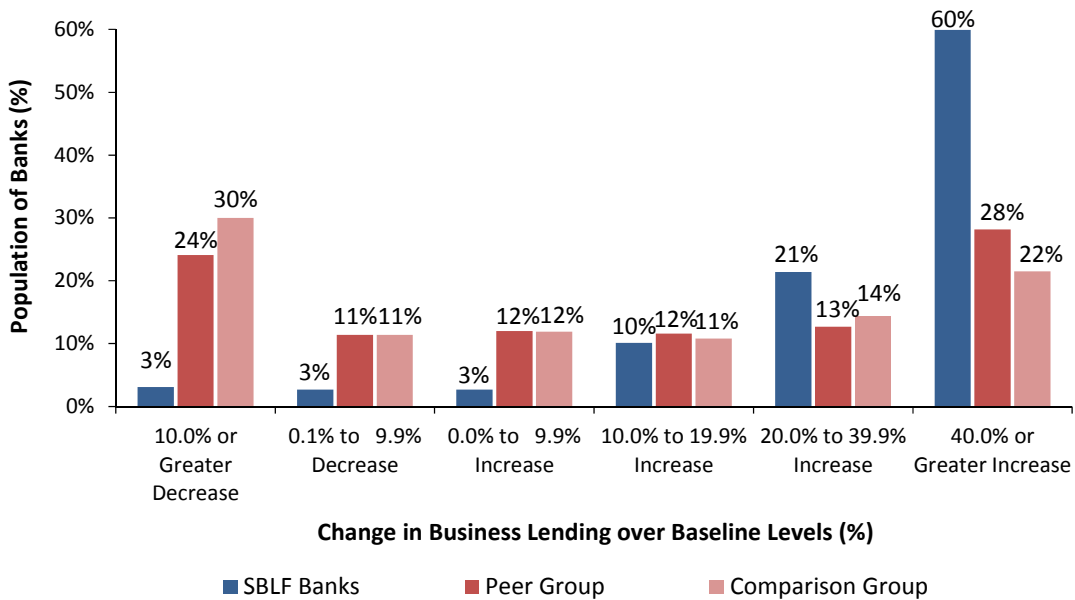
The following graph shows changes in business lending and other lending by SBLF banks, the peer group, and the comparison group.



Distribution of Changes in Business Lending

A substantially greater percentage of SBLF banks than banks in the peer and comparison groups report significant increases in business lending. In total, 91 percent of banks participating in SBLF have increased their business lending by 10 percent or more versus 52 percent for the peer group and 47 percent for the comparison group. Thirty-six percent of the peer group and 41 percent of the comparison group have reduced business lending versus 6 percent of SBLF bank participants.

**Distribution of Changes in Business Lending
(Reported as of September 30, 2013)**



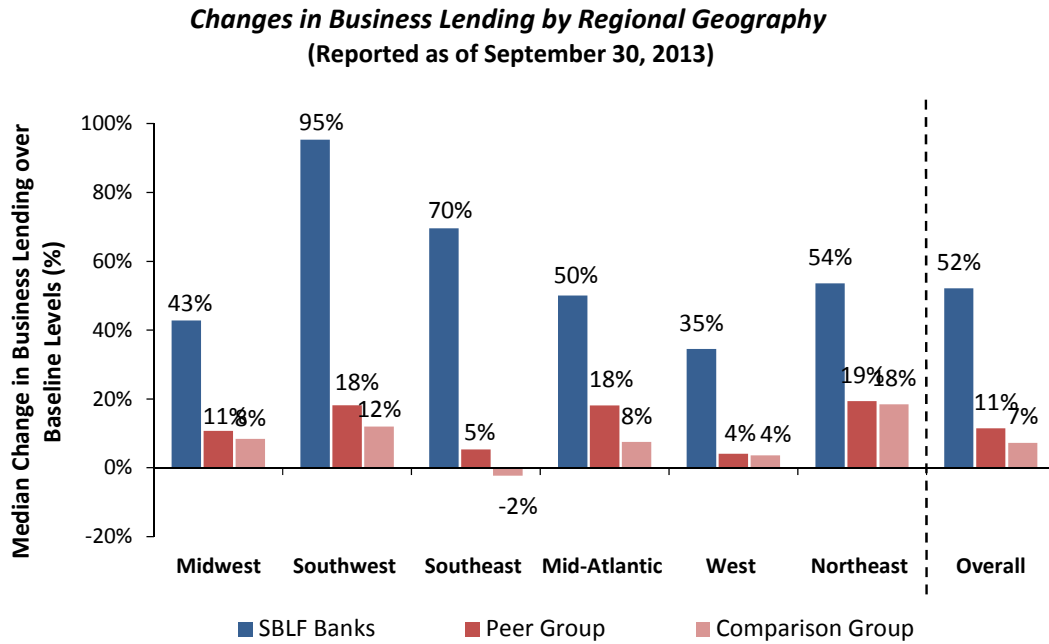
SBLF banks increased business lending to a greater extent than both the peer and comparison groups as measured by the proportion of institutions reporting increases, as well as the percentage increases reported. SBLF banks increased business lending by a mean of 78 percent with a standard deviation of 74 percentage points.¹⁰ The peer group of non-SBLF banks increased business lending by a mean of 28 percent with a standard deviation of 56 percentage points while the comparison group increased business lending by a mean of 16 percent with a standard deviation of 47 percentage points.

¹⁰ The calculations of the mean and standard deviation for each group apply a 90 percent winsorization (i.e., all data below the fifth percentile is set to the value of the fifth percentile and all data above the 95th percentile is set to the value of the 95th percentile). Winsorization is a statistical transformation used to limit the effect of extreme values in a sample. The standard deviation is a measure of the variation of data points from their mean. In these results, the large standard deviations indicate that the percentage increases in business lending by SBLF banks and the peer and comparison groups are distributed over a large range of values and not concentrated around the mean.



Changes in Business Lending by Regional Geography

In each region of the country, SBLF banks reported median increases in business lending while both the peer group and the comparison group reported smaller median increases. The following graph compares median changes in business lending by SBLF banks and the peer and comparison groups across six regions.

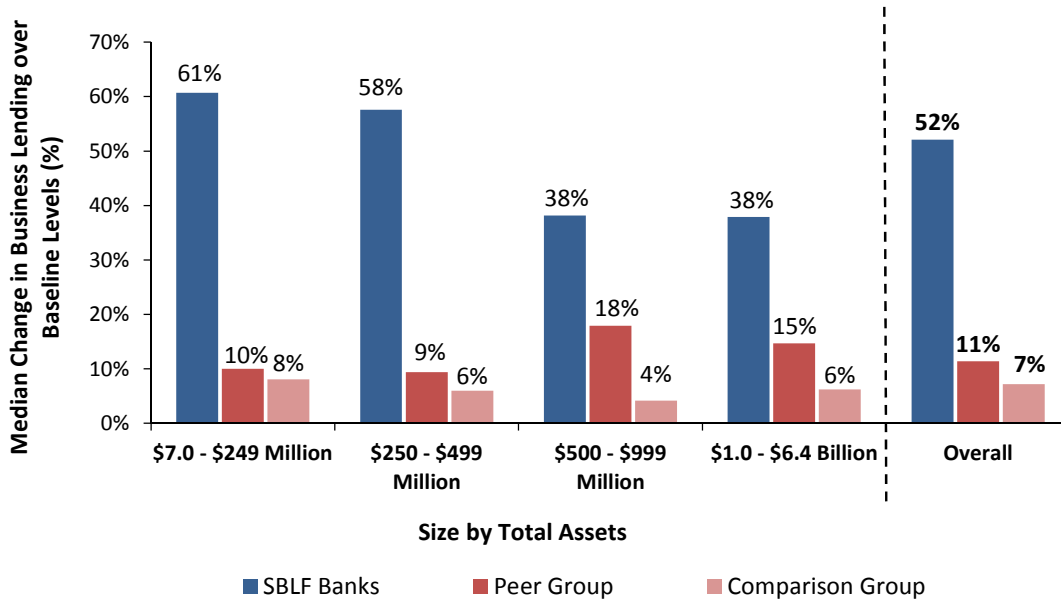


Changes in Business Lending by Institution Size

Across all ranges of institution size as defined by total assets, SBLF banks reported median increases in business lending while both the peer group and comparison group reported smaller median increases. The following graph compares median changes in business lending by SBLF banks and the peer and comparison groups across four categories of institution size.



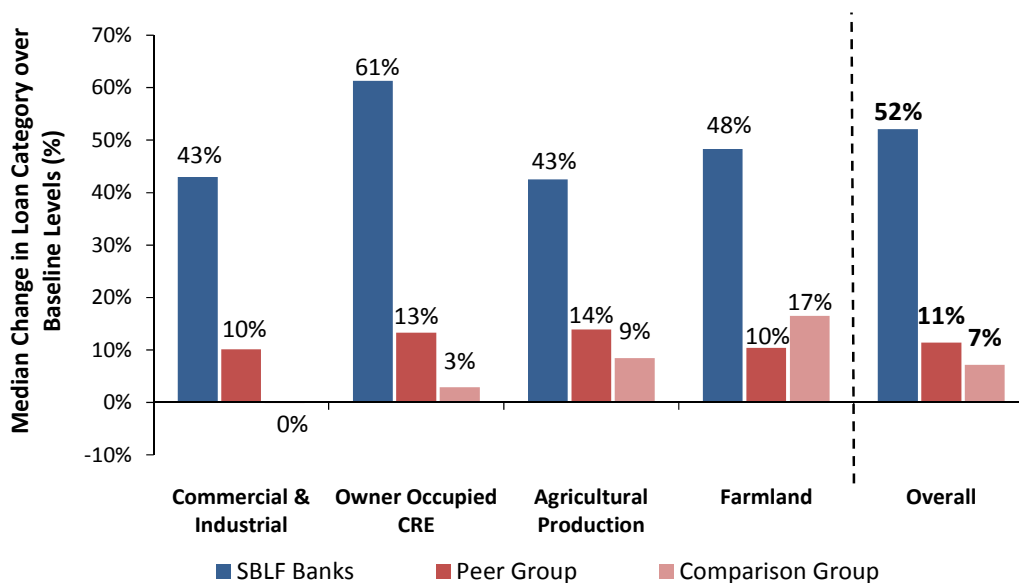
Changes in Business Lending by Institution Size
(Reported as of September 30, 2013)



Changes in Business Lending by Loan Category

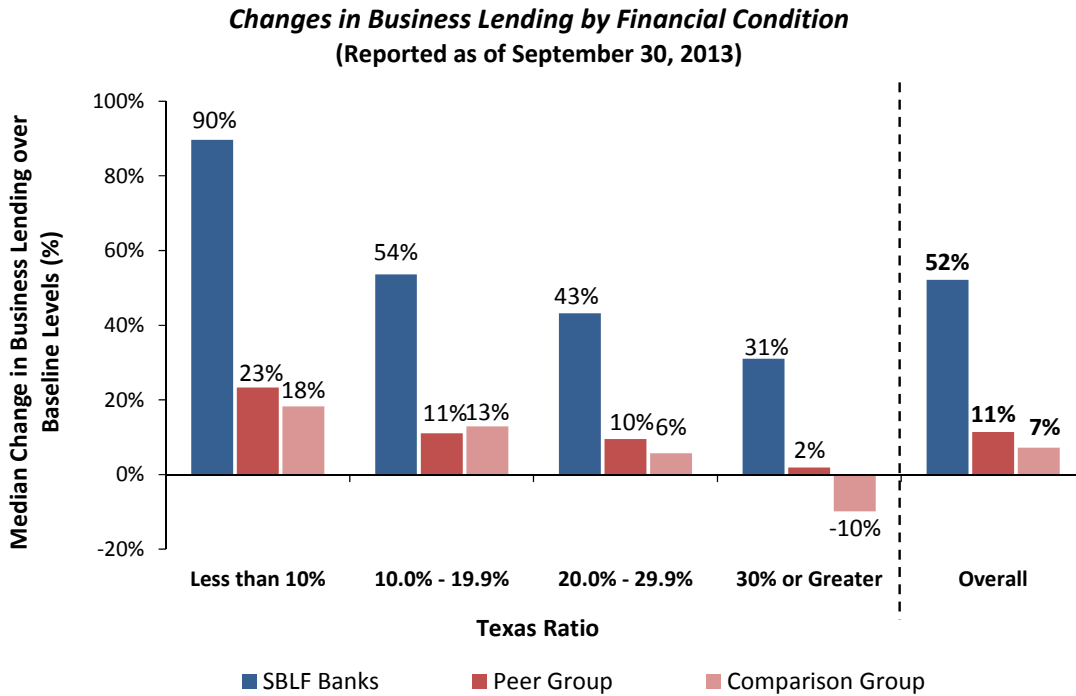
Across all of the four loan categories that comprise business lending, SBLF banks reported median increases in business lending while both the peer group and comparison group reported smaller median increases or no change. The following graph compares median changes in business lending by SBLF banks and the peer and comparison bank groups across the four loan categories.

Changes in Business Lending by Loan Category
(Reported as of September 30, 2013)



Changes in Business Lending by Financial Condition

Across all ranges of financial condition as measured by Texas ratio¹¹, SBLF banks reported median increases in business lending while both the peer group and comparison group reported smaller median increases or median decreases. The following graph compares median changes in business lending by SBLF banks and the peer and comparison groups across four categories of Texas ratios.



¹¹ The Texas ratio is used as a proxy for the financial condition of the institution, and is defined as the institution’s nonperforming assets plus loans 90 days or more past due all divided by the institution’s tangible equity plus loan loss reserves.



LENDING BY FORMER CAPITAL PURCHASE PROGRAM (CPP) PARTICIPANTS

The Act authorized Treasury to allow CPP participants that met certain requirements to refinance CPP investments into SBLF. In total, 137 institutions repaid a CPP investment in connection with an SBLF closing. These banks received \$2.7 billion in SBLF funding and used \$2.2 billion of this capital to repay outstanding CPP balances. This section of the report includes information on the 121 institutions that repaid a CPP investment in connection with an SBLF closing and continue to participate in the program.

Small Business Lending Increases by Former CPP Participants

In total, institutions that received CPP funding and refinanced these investments reported a \$5.0 billion increase in small business lending over baseline levels, with a median increase of 25.8 percent. By comparison, these institutions would have needed to increase small business lending by at least \$2.6 billion in aggregate to achieve the maximum program incentive (as defined previously).

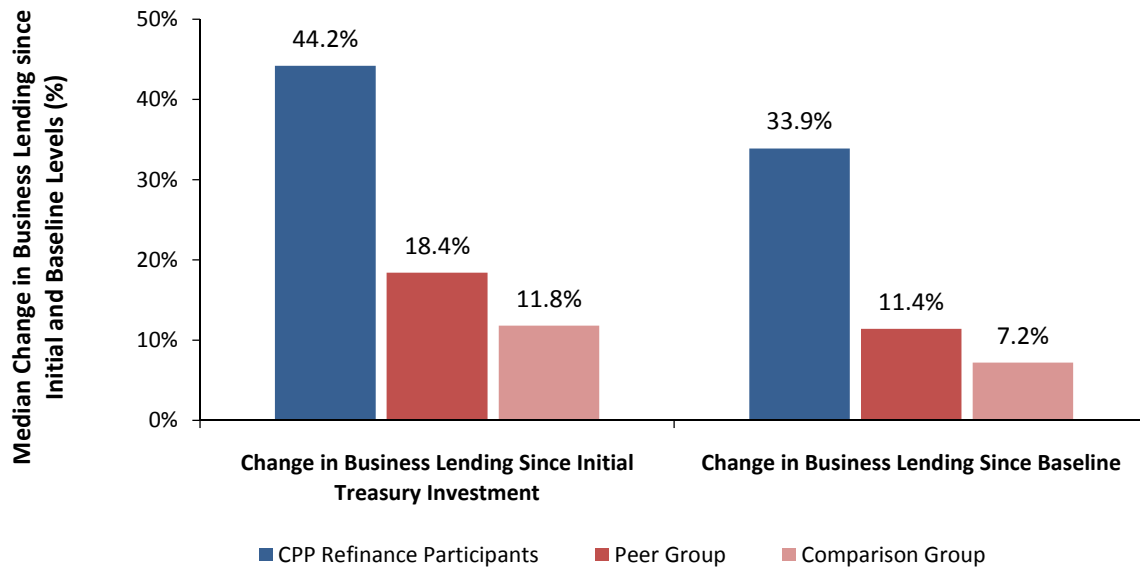
To date, 91 percent of institutions that refinanced CPP investments have increased their small business lending over baseline levels and 86 percent have increased their small business lending by 10 percent or more. Of the 11 institutions (9 percent) that report decreases in small business lending over baseline levels, four have increased lending by \$25.4 million since receiving SBLF funding but report an aggregate decrease in small business lending of \$40.3 million because of decreases in lending that occurred in the period between the baseline and Treasury's investment.

Changes in Business Lending by Former CPP Participants

Banks that received CPP funding and refinanced these investments through SBLF reported a significant median increase in business lending following receipt of the initial CPP investments. These institutions also reported a median increase from the SBLF baseline period.

SBLF banks that refinanced CPP funding reported a median increase in business lending of 44.2 percent since their initial receipt of CPP funding from Treasury. These participants also reported that their business lending has increased by a median of 33.9 percent since the baseline period. The peer group of non-SBLF banks reported a median increase in business lending of 18.4 percent since the reporting date following the CPP closings and the comparison group reported a median increase in business lending of 11.8 percent over the same period. Since the baseline period, the peer group has increased business lending by a median of 11.4 percent and the comparison group has increased business lending by 7.2 percent, as previously noted. Increases in business lending following the CPP investment prior to the baseline period would generally have the effect of increasing the reported baseline, thereby reducing the percentage increase in business lending reported since the baseline period.

Changes in Business Lending by Former CPP Participants¹²
 (Reported as of September 30, 2013)



Dividend Rates Payable by Institutions that Refinanced CPP Investments

Institutions that refinance capital from CPP benefit from the dividend or interest rate incentive provided by SBLF only if they increase their small business lending over baseline levels. As of September 30, 2013, banks that refinanced CPP capital pay an average dividend or interest rate of 1.7 percent on SBLF funding, whereas other bank participants pay an average rate of 1.3 percent.¹³

APPENDICES

- A. Report Methodology
- B. Changes in Lending Since Initial SBLF Investments
- C. Institution-Specific Reporting on Small Business Lending by SBLF Participants
- D. Institution-Specific Reporting on Business Lending by SBLF Banks

¹² For the 121 former CPP participants, the median increase in business lending reflected in the first column is measured from the first reporting date after each participant received its initial CPP capital to September 30, 2013. Because the median CPP refinance participant received this capital during the first quarter of 2009, the median increase in business lending for the peer and comparison groups is measured from March 31, 2009 to September 30, 2013 for this calculation. This calculation excludes two SBLF participants that were former CPP participants but were subsequently acquired following the receipt of SBLF funding.

¹³ These figures are adjusted to account for differences in the rates paid by subchapter S corporations and mutual institutions.



APPENDIX A: REPORT METHODOLOGY

This report provides information on changes in small business lending, business lending, and other (non-business related) lending by SBLF participants as of September 30, 2013, relative to baseline levels. For each institution analyzed for this report, changes in lending are measured as the dollar value or percentage change, as noted, in lending between September 30, 2013 and the baseline period, unless otherwise specified. The baseline is calculated as the average of the applicable loan amounts that the institution reported for each of the four calendar quarters ended June 30, 2010.

Measurement of Small Business Lending

SBLF participants, which include banks and community development loan funds (CDFs), report changes in small business lending by submitting quarterly reports to Treasury. This information is aggregated and presented in summary form in the “Increases in Small Business Lending Over Baseline Levels” section of this report.

The Act defines “small business lending” as business loans that are (i) \$10 million or less in amount to businesses with \$50 million or less in revenue and (ii) included in one of the following categories:

- Commercial and industrial loans
- Owner-occupied nonfarm, nonresidential real estate loans (“owner-occupied CRE”)
- Loans to finance agricultural production and other loans to farmers (“agricultural production”)
- Loans secured by farmland (“farmland”)

The SBLF program terms provide for additional adjustments to the calculation of small business lending relating to net charge-offs and portions of loans guaranteed by the U.S. government or for which risk has been assumed by third parties, as well as mergers and acquisitions and purchases of loans.

Changes in small business lending are calculated as the difference between the level of loans outstanding as of September 30, 2013 and the baseline amount. Participants report their baseline and changes in small business lending by submitting quarterly supplemental reports to Treasury. The most recent supplemental report includes lending information as of September 30, 2013.

Participants are required to revise prior period submissions of small business lending data if inaccuracies are identified. Treasury publishes this updated information quarterly in its Report on SBLF Participants’ Small Business Lending Growth (previously titled the SBLF Use of Funds Report). This report includes restatements of prior period institution-specific information in the report appendices, which are also available in Microsoft Excel format. These resubmissions may yield minor differences in reporting, with each report including the most recent available data for the then-current period as well as all prior periods. Because the most recent information available for all periods is included in each quarterly report, Treasury does not generally revise prior period reports to reflect these resubmissions.

Institution-specific reporting on changes in small business lending by SBLF participants is presented in Appendix C.

Measurement of Business Lending and Other Lending

This report provides information on changes in “business lending” and “other lending” by SBLF bank participants relative to (i) a representative peer group of 490 community banks that were selected to match the specific size, geography, and financial condition of SBLF banks and (ii) a broader comparison group of all 6,045 similarly-sized

community banks that are located in one of the 44 states in which SBLF banks are headquartered and that engaged in business lending. The report also analyzes changes in business lending for the subset of SBLF banks that refinanced into the program from Treasury's Capital Purchase Program (CPP).

To obtain information regarding business and other lending by SBLF banks and the two non-SBLF bank groups, Treasury accessed information from SNL Financial, a private financial database that contains publicly-filed regulatory and financial reports.

In contrast to small business lending, "business lending" refers to the same four categories of loans referenced in the definition of small business lending without exclusions for loans to businesses over \$10 million and loans to businesses with more than \$50 million in revenue, and without the additional adjustments used in SBLF's calculation of small business lending. Because the banks in the non-SBLF bank groups are not program participants and do not report small business lending as defined by the program terms, this analysis uses business lending as proxy for small business lending activities. Most business lending reported by SBLF banks qualifies as small business lending. For example, as of March 31, 2013, small business lending totaled 95.0 percent of business lending by dollar value for the median SBLF bank.

Changes in business and other lending are calculated as the difference between the level of loans outstanding as of September 30, 2013 and the baseline amount. The baseline is calculated as the average of the business loans outstanding that the institution reported for each of the four calendar quarters ended June 30, 2010. Changes in other lending are calculated based on the institution's total loans and leases, including loans held for sale, less the amount of business loans outstanding.

For former CPP participants, this report includes a calculation of the median increase in business lending since they received their initial CPP investment in the "Lending by Former Capital Purchase Program (CPP) Participants" section. For this section, bank-specific changes in lending for this calculation are measured from the first quarterly reporting date after the bank received its initial CPP investment to September 30, 2013. This section also includes a calculation of the median increase in business lending by the non-SBLF bank groups from March 31, 2009 (the first reporting date after the median CPP participant received its initial CPP investment) to September 30, 2013.

As noted, the definition of "banks" in this report encompasses both banks and thrifts. Prior to March 31, 2012, many thrifts reported lending on Thrift Financial Reports (TFRs), rather than the Call Reports used by banks. Call Reports segment nonfarm, nonresidential real estate loans into separate owner-occupied and non-owner occupied categories, and only those loans classified as owner-occupied are eligible for inclusion in business lending. This distinction, however, is not readily accessible in TFR filings. To adjust for this difference, the analysis in this report calculates owner-occupied nonfarm, nonresidential real estate as a percentage of total nonfarm, nonresidential real estate as of March 31, 2012 for each thrift institution. The resulting percentage is applied to nonfarm, nonresidential real estate loan balances from TFRs filed prior to March 31, 2012, including those used in the calculation of baseline values. As of the quarter ended March 31, 2012, all banks, thrifts, and bank and thrift holding companies file Call Reports.

This comparative information will be updated periodically. Institution-specific reporting on changes in business lending by SBLF banks is presented in Appendix D.

Calculation of Median Changes in Lending

In comparing SBLF banks to the non-SBLF bank groups, this report generally describes the median percentage change in lending. The median measure is used for these comparisons because it more closely describes the lending

activities of the typical institution in each group than would a calculation of the arithmetic mean (which is subject to skew by outlying measures) or the weighted average (which is subject to concentration effects, given the distribution of institution asset sizes within the SBLF portfolio). Institutions that report a baseline value of zero for the relevant measure are excluded from the median calculation.

Selection of Non-SBLF Bank Comparison Group and Peer Group

In describing changes in business lending, this report compares the group of 257 banks that continue to participate in the SBLF program to a broad comparison group of non-SBLF banks and a representative peer group selected from the broader comparison group:

- **Comparison Group.** The comparison group is comprised of the 6,450 non-SBLF insured depository institutions that (i) were established prior to March 31, 2009, (ii) had total assets between \$7.0 million and \$6.4 billion (the range of total assets for SBLF banks) as of March 31, 2011, which is the end of the first quarter prior to SBLF banks receiving funding, (iii) are located in one of the 44 states in which SBLF banks are headquartered, and (iv) reported a positive amount of business lending in the baseline period.

Each quarter, institutions are removed from the initial comparison group if they are merged into another institution or closed. As of September 30, 2013, a total of 372 institutions have been removed from the initial 6,417 institution comparison group for these reasons. While the comparison group includes banks that share the aforementioned characteristics with SBLF banks, the selection criteria for the group does not imply that it has the same distribution with respect to size, geography, or financial condition as the portfolio of SBLF banks.

- **Peer Group.** The peer group is comprised of 490 non-SBLF insured depository institutions that share certain size, geographic, and financial characteristics with the group of SBLF bank participants.

For each SBLF participant bank, two peer banks were selected from the comparison group. The institutions selected were generally the two banks with the closest Texas ratios that were located within the same state and asset size category as the SBLF participant as of March 31, 2011 (the quarter immediately prior to Treasury's first SBLF investment). The five categories of asset size in this analysis are (i) \$7 to \$99 million, (ii) \$100 to \$249 million, (iii) \$250 to \$499 million, (iv) \$500 to \$999 million, and (v) \$1.0 to \$6.4 billion. The Texas ratio is used as a proxy for the financial condition of the institution, and is defined as the institution's nonperforming assets plus loans 90 days or more past due all divided by the institution's tangible equity plus loan loss reserves.

For example, an SBLF bank based in Ohio with \$750 million in assets and a Texas ratio of 20 percent would be matched with the two, Ohio-based banks in the \$500 to \$999 million asset size category that have Texas ratios closest to 20 percent.

In those instances in which SBLF banks have an overlapping peer bank, the same peer is not used in the peer group more than once. Instead, the peer is assigned to the SBLF bank with the closest Texas ratio and the other SBLF bank is assigned to its next closest peer.

Peer institutions were selected as of March 31, 2011. This analysis removes institutions from the peer group if (i) the corresponding SBLF bank fully redeems its SBLF securities and exits the program or (ii) in the case of the acquisition of the peer, its merger into another institution, or closure. As of September 30, 2013, a total of 34 institutions have been removed from the peer group as a result of SBLF participants exiting the program and 18 have been removed as a result of mergers or acquisitions of the peer institutions.

The following table is a summary of the size, Texas ratio, and geographic distribution of SBLF bank participants, the peer group, and the comparison group.

| Summary of the Characteristics of SBLF Banks, the Peer Group, and the Comparison Group | | | |
|---|-------------------|-------------------|-------------------------|
| | SBLF Banks | Peer Group | Comparison Group |
| Number of institutions | 257 | 490 | 6045 |
| Increase in business lending (median) | 52.1% | 11.4% | 7.2% |
| Increase in other lending (median) | 31.6% | 5.2% | -2.3% |
| Assets (\$000s) | | | |
| Median | \$306,908 | \$291,356 | \$145,320 |
| Mean | \$571,992 | \$485,159 | \$309,612 |
| Texas Ratio | | | |
| Median | 14.7% | 15.9% | 17.1% |
| Mean | 17.6% | 19.7% | 19.7% |
| Region (% of institutions) | | | |
| Midwest | 28.0% | 28.6% | 45.3% |
| Northeast | 19.1% | 19.8% | 9.5% |
| South | 38.5% | 38.2% | 36.9% |
| West | 14.4% | 13.5% | 8.2% |



APPENDIX B: CHANGES IN LENDING SINCE INITIAL SBLF INVESTMENTS

The table on this page includes the aggregate increases in qualified small business lending by participants since the initial SBLF investments.¹⁴ Additionally, it shows quarter-over-quarter changes in the number of participants reporting lending in the five ranges of small business loan growth that correspond to various dividend or interest rates payable on SBLF securities. Please see Appendix D for institution-specific reporting of small business lending by SBLF participants.

| Participant Changes in Qualified Small Business Lending Since Initial SBLF Investments (Q3 2011) | | | | | | | | |
|--|---------|---------|---------|---------|---------|---------|---------|---------|
| | Q4 2011 | Q1 2012 | Q2 2012 | Q3 2012 | Q4 2012 | Q1 2013 | Q2 2013 | Q3 2013 |
| Cumulative Increase in Small Business Lending (\$ in Billions) | \$1.3 | \$1.7 | \$3.1 | \$3.9 | \$5.3 | \$5.5 | \$6.8 | \$7.7 |
| Change in Small Business Lending (# of Participants) | | | | | | | | |
| Under 2.5% or Reduced | 155 | 137 | 93 | 84 | 64 | 69 | 47 | 41 |
| 2.5 to 4.9% Increase | 46 | 37 | 39 | 18 | 18 | 17 | 5 | 9 |
| 5.0 to 7.4% Increase | 47 | 31 | 26 | 24 | 17 | 19 | 17 | 8 |
| 7.5 to 9.9% Increase | 27 | 27 | 26 | 31 | 21 | 12 | 18 | 16 |
| 10.0% or Greater Increase | 57 | 100 | 147 | 169 | 200 | 200 | 228 | 233 |

¹⁴ In this analysis, the point of SBLF investment is defined as Q3 2011 and is measured as the change in lending between September 30, 2011 and September 30, 2013. The first four of Treasury's investments in SBLF participants were made in the quarter ended June 30, 2011, with all subsequent investments made in the quarter ended September 30, 2011.

The table on this page includes results for the SBLF banks, peer group, and comparison group for business lending since the initial SBLF investments. The information reported herein is based on Call Report data from September 2013 and the methodology described in Appendix A.

| Measurement of Lending by SBLF Banks, Peer Group, and Comparison Group Since Initial SBLF Investments (Q3 2011) | | | |
|--|-----------------------|-----------------------|-----------------------------|
| | SBLF Banks | Peer Group | Comparison Group |
| Number of institutions | 257 | 488 | 6035 |
| Changes in Business and Other Lending | % | % | % |
| Increase in Business Lending (median) | 29.8 | 7.4 | 5.1 |
| Increase in Other Lending (median) | 20.6 | 5.5 | 1.3 |
| Increase in Business Lending (mean) | 35.8 | 12.9 | 8.7 |
| Increase in Business Lending (standard dev.) | 31.2 | 29.8 | 27.1 |
| Institutions that Increased Business Lending by 10% or more | 82.9 | 45.9 | 41.3 |
| Institutions that Reduced Business Lending | 7.4 | 35.9 | 40.7 |
| Distribution of Changes in Business Lending | | | |
| 10.0% or Greater Decrease | 3.9 | 19.9 | 23.5 |
| 0.1% to 9.9% Decrease | 3.5 | 16.0 | 17.1 |
| 0.0% to 9.9% Increase | 9.7 | 18.2 | 18.1 |
| 10.0% to 19.9% Increase | 17.1 | 16.6 | 14.8 |
| 20.0% to 39.9% Increase | 34.6 | 14.1 | 14.5 |
| 40.0% or Greater Increase | 31.1 | 15.2 | 11.9 |
| Changes in Business Lending by Regional Geography | | | |
| Midwest | 25.4 | 6.7 | 6.0 |
| Southwest | 42.4 | 10.3 | 10.3 |
| Southeast | 30.6 | 4.0 | -1.7 |
| Mid-Atlantic | 30.8 | 6.6 | 2.1 |
| West | 27.3 | 10.4 | 5.4 |
| Northeast | 28.9 | 12.1 | 10.5 |
| Changes in Business Lending by Institution Size | | | |
| \$7.0 to \$249 Million | 30.2 | 6.3 | 5.5 |
| \$250 to \$499 Million | 35.3 | 6.8 | 4.1 |
| \$500 to \$999 Million | 18.7 | 11.2 | 3.7 |
| \$1.0 to \$6.4 Billion | 32.3 | 11.5 | 5.6 |
| Changes in Business Lending by Loan Category | | | |
| Commercial & Industrial | 29.1 | 6.6 | 2.8 |
| Owner-Occupied CRE | 29.0 | 5.2 | 20.0 |
| Agricultural Production | 20.1 | 9.3 | 7.6 |
| Farmland | 15.6 | 650.0 | 7.7 |
| Changes in Business Lending by Texas Ratio | | | |
| Less than 10% | 35.3 | 8.7 | 9.9 |
| 10.0% to 19.9% | 29.7 | 6.8 | 7.9 |
| 20.0% to 29.9% | 28.4 | 5.5 | 5.4 |
| 30.0% or Greater | 22.5 | 6.3 | -3.3 |
| Changes in Business Lending by Former CPP Participants | | | |
| Increase in Business Lending since SBLF Investment | 25.0 | 7.4 | 5.1 |

APPENDIX D: INSTITUTION-SPECIFIC REPORTING ON SMALL BUSINESS LENDING BY SBLF PARTICIPANTS



Institutions Participating in SBLF

Report on Information from 9/30/2013 Quarterly Supplemental Reports transmitted with January 2014 Report

| Institution | | | Bank or CDLF? | SBLF Funding Outstanding | Qualified Small Business Lending as of 9/30/2013 | | | | |
|---|---------------------|-------|---------------|--------------------------|--|---------------|-----------------------------------|------------------------|----------------|
| Name | City | State | | | Baseline Level | Current Level | Increase (Decrease) over Baseline | % Change over Baseline | Resulting Rate |
| Southern National Corporation | Andalusia | AL | Bank | 4,500,000 | 155,408,000 | 191,688,000 | 36,280,000 | 23.35% | 1.50% |
| Southern States Bancshares, Inc. | Anniston | AL | Bank | 7,492,000 | 53,588,000 | 73,151,000 | 19,563,000 | 36.51% | 1.00% |
| ServisFirst Bancshares, Inc. | Birmingham | AL | Bank | 40,000,000 | 659,796,000 | 1,409,160,000 | 749,364,000 | 113.58% | 1.00% |
| BancIndependent, Incorporated | Sheffield | AL | Bank | 30,000,000 | 241,790,000 | 296,187,000 | 54,397,000 | 22.50% | 1.00% |
| First Partners Bank (SouthCity Bank) | Vestavia Hills | AL | Bank | 5,200,000 | 39,071,000 | 52,408,000 | 13,337,000 | 34.14% | 1.00% |
| First Service Bancshares, Inc. | Greenbrier | AR | Bank | 7,716,000 | 73,164,000 | 66,790,000 | (6,374,000) | -8.71% | 10.80% |
| Rock Bancshares, Inc. | Little Rock | AR | Bank | 6,742,000 | 56,208,000 | 100,670,000 | 44,462,000 | 79.10% | 1.50% |
| Western Alliance Bancorporation | Phoenix | AZ | Bank | 141,000,000 | 1,638,103,000 | 1,848,062,000 | 209,959,000 | 12.82% | 1.00% |
| Seacoast Commerce Bank | Chula Vista | CA | Bank | 4,000,000 | 45,347,000 | 97,165,000 | 51,818,000 | 114.27% | 1.00% |
| First Northern Community Bancorp | Dixon | CA | Bank | 12,847,000 | 225,762,000 | 253,687,000 | 27,925,000 | 12.37% | 1.00% |
| Community Valley Bank | El Centro | CA | Bank | 2,400,000 | 13,645,000 | 31,874,000 | 18,229,000 | 133.59% | 1.00% |
| Redwood Capital Bancorp | Eureka | CA | Bank | 7,310,000 | 46,088,000 | 57,542,000 | 11,454,000 | 24.85% | 1.00% |
| Central Valley Community Bancorp | Fresno | CA | Bank | 7,000,000 | 296,001,000 | 284,208,000 | (11,793,000) | -3.98% | 7.00% |
| Banc of California, Inc. (First PacTrust Bancorp, Inc.) | Irvine | CA | Bank | 42,000,000 | 312,254,000 | 377,715,000 | 65,461,000 | 20.96% | 1.00% |
| Silvergate Capital Corporation | La Jolla | CA | Bank | 12,427,000 | 9,115,000 | 14,432,000 | 5,317,000 | 58.33% | 2.14% |
| California Bank of Commerce | Lafayette | CA | Bank | 11,000,000 | 73,565,000 | 188,142,000 | 114,577,000 | 155.75% | 1.00% |
| ProAmérica Bank (Promérica Bank) | Los Angeles | CA | Bank | 3,750,000 | 43,274,000 | 55,889,000 | 12,615,000 | 29.15% | 1.00% |
| GBC Holdings, Inc. | Los Angeles | CA | Bank | 5,000,000 | 81,993,000 | 117,670,000 | 35,677,000 | 43.51% | 1.00% |
| 1st Enterprise Bank | Los Angeles | CA | Bank | 16,400,000 | 88,154,000 | 262,624,000 | 174,470,000 | 197.92% | 1.00% |
| Partners Bank of California | Mission Viejo | CA | Bank | 2,463,000 | 54,729,000 | 57,789,000 | 3,060,000 | 5.59% | 3.00% |
| Bank of Commerce Holdings | Redding | CA | Bank | 20,000,000 | 200,059,000 | 228,665,000 | 28,606,000 | 14.30% | 1.00% |
| Security California Bancorp | Riverside | CA | Bank | 7,200,000 | 164,981,000 | 204,340,000 | 39,359,000 | 23.86% | 1.00% |
| Pacific Coast Bankers' Bancshares | San Francisco | CA | Bank | 11,960,000 | 42,624,000 | 22,506,000 | (20,118,000) | -47.20% | 7.00% |
| Capital Bank | San Juan Capistrano | CA | Bank | 3,132,000 | 16,458,000 | 71,056,000 | 54,598,000 | 331.74% | 1.00% |
| Founders Bancorp | San Luis Obispo | CA | Bank | 4,178,000 | 35,399,000 | 53,919,000 | 18,520,000 | 52.32% | 1.00% |
| The Bank of Santa Barbara | Santa Barbara | CA | Bank | 1,882,380 | 22,776,000 | 51,290,000 | 28,514,000 | 125.19% | 1.00% |
| Summit State Bank | Santa Rosa | CA | Bank | 13,750,000 | 82,734,000 | 112,392,000 | 29,658,000 | 35.85% | 1.00% |
| FNB Bancorp | South San Francisco | CA | Bank | 9,450,000 | 149,634,000 | 141,809,000 | (7,825,000) | -5.23% | 7.00% |
| Columbine Capital Corp. | Buena Vista | CO | Bank | 6,050,000 | 44,150,000 | 79,288,000 | 35,138,000 | 79.59% | 1.00% |
| CIC Bancshares, Inc. | Denver | CO | Bank | 1,772,000 | 67,982,000 | 121,321,000 | 53,339,000 | 78.46% | 1.00% |
| Steele Street Bank Corporation | Denver | CO | Bank | 11,350,000 | 65,842,000 | 110,090,000 | 44,248,000 | 67.20% | 1.50% |
| CoBiz Financial Inc. | Denver | CO | Bank | 57,366,000 | 740,718,000 | 846,209,000 | 105,491,000 | 14.24% | 1.00% |
| Verus Acquisition Group, Inc. | Fort Collins | CO | Bank | 9,740,000 | 66,000,000 | 76,551,000 | 10,551,000 | 15.99% | 1.00% |
| Morgan Capital Corporation | Fort Morgan | CO | Bank | 3,250,000 | 27,381,000 | 30,418,000 | 3,037,000 | 11.09% | 1.91% |
| Salisbury Bancorp, Inc. | Lakeville | CT | Bank | 16,000,000 | 77,732,000 | 105,363,000 | 27,631,000 | 35.55% | 1.00% |
| Bankwell Financial Group, Inc. (BNC Financial Group, Inc.) | New Canaan | CT | Bank | 10,980,000 | 28,259,000 | 154,344,000 | 126,085,000 | 446.18% | 1.00% |
| SBT Bancorp, Inc. | Simsbury | CT | Bank | 9,000,000 | 34,899,000 | 55,540,000 | 20,641,000 | 59.14% | 1.00% |
| Community Bank Delaware | Lewes | DE | Bank | 4,500,000 | 31,548,000 | 35,151,000 | 3,603,000 | 11.42% | 1.80% |
| Platinum Bank Holding Co. (Platinum Bank) | Brandon | FL | Bank | 13,800,000 | 166,747,000 | 188,815,000 | 22,068,000 | 13.23% | 1.50% |
| Marquis Bank | Coral Gables | FL | Bank | 3,500,000 | 11,273,000 | 39,962,000 | 28,689,000 | 254.49% | 1.00% |
| First Green Bancorp, Inc. (First Green Bank) | Eustis | FL | Bank | 4,727,000 | 30,339,000 | 82,904,000 | 52,565,000 | 173.26% | 1.00% |
| Broward Financial Holdings, Inc. | Fort Lauderdale | FL | Bank | 3,134,000 | 14,233,000 | 56,578,000 | 42,345,000 | 297.51% | 1.00% |
| FineMark Holdings, Inc. | Fort Myers | FL | Bank | 5,665,000 | 25,709,000 | 73,388,000 | 47,679,000 | 185.46% | 1.00% |
| Community Southern Holdings, Inc. (Community Southern Bank) | Lakeland | FL | Bank | 5,700,000 | 28,611,000 | 51,515,000 | 22,904,000 | 80.05% | 1.00% |

| Institution | | | Bank or CDFL? | SBLF Funding Outstanding | Qualified Small Business Lending as of 9/30/2013 | | | | |
|--|------------------|-------|---------------|--------------------------|--|---------------|-----------------------------------|------------------------|----------------|
| Name | City | State | | | Baseline Level | Current Level | Increase (Decrease) over Baseline | % Change over Baseline | Resulting Rate |
| Bank of Central Florida | Lakeland | FL | Bank | 7,000,000 | 65,574,000 | 113,276,000 | 47,702,000 | 72.75% | 1.00% |
| CBOS Bankshares, Inc. | Merritt Island | FL | Bank | 3,893,000 | 46,283,000 | 31,423,000 | (14,860,000) | -32.11% | 7.00% |
| Ovation Holdings, Inc. | Naples | FL | Bank | 5,000,000 | 22,467,000 | 46,375,000 | 23,908,000 | 106.41% | 1.00% |
| Florida Community Bankshares, Inc. | Ocala | FL | Bank | 17,000,000 | 158,498,000 | 128,269,000 | (30,229,000) | -19.07% | 7.00% |
| Jefferson Bank of Florida | Oldsmar | FL | Bank | 3,367,000 | 13,891,000 | 38,552,000 | 24,661,000 | 177.53% | 1.00% |
| Florida Shores Bancorp, Inc. | Pompano Beach | FL | Bank | 12,750,000 | 88,898,000 | 151,844,000 | 62,946,000 | 70.81% | 1.00% |
| Gulfstream Bancshares, Inc. | Stuart | FL | Bank | 7,500,000 | 283,018,000 | 241,543,000 | (41,475,000) | -14.65% | 7.00% |
| HomeBancorp, Inc. | Tampa | FL | Bank | 7,398,000 | 12,298,000 | 20,297,000 | 7,999,000 | 65.04% | 1.00% |
| Florida Business BancGroup, Inc. | Tampa | FL | Bank | 15,360,000 | 98,486,000 | 143,578,000 | 45,092,000 | 45.79% | 1.00% |
| Resurgens Bancorp | Atlanta | GA | Bank | 2,967,000 | 18,065,000 | 26,098,000 | 8,033,000 | 44.47% | 1.50% |
| The Peoples Bank of Talbotton | Talbotton | GA | Bank | 890,000 | 5,943,000 | 10,138,000 | 4,195,000 | 70.59% | 1.00% |
| Lowndes Bancshares, Inc. | Valdosta | GA | Bank | 6,000,000 | 41,214,000 | 47,993,000 | 6,779,000 | 16.45% | 1.00% |
| Heartland Financial USA, Inc. | Dubuque | IA | Bank | 81,698,000 | 1,005,993,000 | 1,123,635,000 | 117,642,000 | 11.69% | 1.00% |
| Liberty Financial Services, Inc. | Sioux City | IA | Bank | 7,000,000 | 67,761,000 | 85,465,000 | 17,704,000 | 26.13% | 1.00% |
| Commercial Financial Corp | Storm Lake | IA | Bank | 18,000,000 | 225,764,000 | 261,937,000 | 36,173,000 | 16.02% | 1.00% |
| D. L. Evans Bancorp | Burley | ID | Bank | 22,391,000 | 350,577,000 | 372,982,000 | 22,405,000 | 6.39% | 3.00% |
| Heartland Bancorp, Inc. | Bloomington | IL | Bank | 25,000,000 | 586,765,000 | 589,254,000 | 2,489,000 | 0.42% | 7.70% |
| Southern Illinois Bancorp, Inc. | Carmi | IL | Bank | 9,000,000 | 92,975,000 | 146,733,000 | 53,758,000 | 57.82% | 1.00% |
| First Busey Corporation | Champaign | IL | Bank | 72,664,000 | 555,684,000 | 664,808,000 | 109,124,000 | 19.64% | 1.00% |
| United Community Bancorp, Inc. | Chatham | IL | Bank | 22,262,000 | 260,066,000 | 290,820,000 | 30,754,000 | 11.83% | 1.50% |
| Signature Bancorporation, Inc. | Chicago | IL | Bank | 12,500,000 | 123,830,000 | 224,552,000 | 100,722,000 | 81.34% | 1.00% |
| Illinois State Bancorp, Inc. | Chicago | IL | Bank | 13,368,000 | 60,188,000 | 85,445,000 | 25,257,000 | 41.96% | 1.00% |
| Prime Banc Corp. | Dieterich | IL | Bank | 10,000,000 | 98,284,000 | 127,837,000 | 29,553,000 | 30.07% | 1.00% |
| First Eldorado Bancshares, Inc. | Eldorado | IL | Bank | 3,000,000 | 41,312,000 | 69,333,000 | 28,021,000 | 67.83% | 1.50% |
| First Community Financial Corporation | Elgin | IL | Bank | 6,100,000 | 32,801,000 | 39,141,000 | 6,340,000 | 19.33% | 1.00% |
| Community First Bancorp, Inc. | Fairview Heights | IL | Bank | 7,000,000 | 52,195,000 | 79,952,000 | 27,757,000 | 53.18% | 1.50% |
| Fisher Bancorp, Inc. | Fisher | IL | Bank | 500,000 | 15,062,000 | 21,259,000 | 6,197,000 | 41.14% | 1.50% |
| Merchants and Manufacturers Bank Corporation | Joliet | IL | Bank | 6,800,000 | 57,311,000 | 80,597,000 | 23,286,000 | 40.63% | 1.00% |
| Tri-County Financial Group, Inc. | Mendota | IL | Bank | 20,000,000 | 153,558,000 | 205,401,000 | 51,843,000 | 33.76% | 1.00% |
| QCR Holdings, Inc. | Moline | IL | Bank | 29,867,000 | 563,955,000 | 499,315,000 | (64,640,000) | -11.46% | 7.00% |
| Bancorp Financial, Inc. | Oak Brook | IL | Bank | 14,643,000 | 14,912,000 | 23,360,000 | 8,448,000 | 56.65% | 2.69% |
| People First Bancshares, Inc. | Pana | IL | Bank | 9,198,000 | 129,986,000 | 173,523,000 | 43,537,000 | 33.49% | 1.50% |
| First Bankers Trustshares, Inc. | Quincy | IL | Bank | 10,000,000 | 148,612,000 | 195,028,000 | 46,416,000 | 31.23% | 1.00% |
| First Robinson Financial Corporation | Robinson | IL | Bank | 4,900,000 | 35,592,000 | 51,066,000 | 15,474,000 | 43.48% | 1.00% |
| Community Illinois Corporation | Rock Falls | IL | Bank | 4,500,000 | 78,909,000 | 90,600,000 | 11,691,000 | 14.82% | 1.00% |
| Town and Country Financial Corporation | Springfield | IL | Bank | 5,000,000 | 91,149,000 | 130,817,000 | 39,668,000 | 43.52% | 1.00% |
| First Savings Financial Group, Inc. | Clarksville | IN | Bank | 17,120,000 | 58,334,000 | 88,962,000 | 30,628,000 | 52.50% | 1.00% |
| Horizon Bancorp | Michigan City | IN | Bank | 12,500,000 | 189,998,000 | 221,080,000 | 31,082,000 | 16.36% | 1.00% |
| MutualFirst Financial, Inc. | Muncie | IN | Bank | 21,692,000 | 182,945,000 | 167,548,000 | (15,397,000) | -8.42% | 7.00% |
| First Merchants Corporation | Muncie | IN | Bank | 34,043,000 | 1,355,533,000 | 1,091,321,000 | (264,212,000) | -19.49% | 7.00% |
| AMB Financial Corp. | Munster | IN | Bank | 3,858,000 | 22,233,000 | 31,741,000 | 9,508,000 | 42.77% | 1.00% |
| Community Bank Shares of Indiana, Inc. | New Albany | IN | Bank | 28,000,000 | 189,712,000 | 213,746,000 | 24,034,000 | 12.67% | 1.57% |
| Bern Bancshares, Inc. | Bern | KS | Bank | 1,500,000 | 23,043,000 | 26,062,000 | 3,019,000 | 13.10% | 1.00% |
| Brotherhood Bancshares, Inc. | Kansas City | KS | Bank | 16,000,000 | 55,235,000 | 37,446,000 | (17,789,000) | -32.21% | 7.00% |
| UBT Bancshares, Inc. | Marysville | KS | Bank | 16,500,000 | 154,451,000 | 224,537,000 | 70,086,000 | 45.38% | 1.00% |
| Osborne Investments, Inc. | Osborne | KS | Bank | 1,000,000 | 14,215,000 | 24,948,000 | 10,733,000 | 75.50% | 1.50% |
| Freedom Bancshares, Inc. | Overland Park | KS | Bank | 4,000,000 | 31,191,000 | 43,689,000 | 12,498,000 | 40.07% | 1.00% |
| Equity Bancshares, Inc. | Wichita | KS | Bank | 16,372,000 | 274,732,000 | 304,362,000 | 29,630,000 | 10.79% | 1.00% |
| Magnolia Bancshares Inc. | Hodgenville | KY | Bank | 2,000,000 | 30,631,000 | 34,136,000 | 3,505,000 | 11.44% | 1.50% |
| FCB Bancorp, Inc. | Louisville | KY | Bank | 9,759,000 | 78,649,000 | 90,439,000 | 11,790,000 | 14.99% | 1.00% |

| Institution | | | Bank or CDFL? | SBLF Funding Outstanding | Qualified Small Business Lending as of 9/30/2013 | | | | |
|--|------------------|-------|---------------|--------------------------|--|---------------|-----------------------------------|------------------------|----------------|
| Name | City | State | | | Baseline Level | Current Level | Increase (Decrease) over Baseline | % Change over Baseline | Resulting Rate |
| First Guaranty Bancshares, Inc. | Hammond | LA | Bank | 39,435,000 | 181,232,000 | 221,773,000 | 40,541,000 | 22.37% | 1.00% |
| MidSouth Bancorp, Inc. | LaFayette | LA | Bank | 32,000,000 | 394,982,000 | 490,708,000 | 95,726,000 | 24.24% | 1.00% |
| Progressive Bancorp, Inc. | Monroe | LA | Bank | 12,000,000 | 104,272,000 | 135,580,000 | 31,308,000 | 30.03% | 1.00% |
| Ouachita Bancshares Corp. | Monroe | LA | Bank | 17,930,000 | 142,925,000 | 192,569,000 | 49,644,000 | 34.73% | 1.50% |
| First NBC Bank Holding Company | New Orleans | LA | Bank | 37,935,000 | 370,388,000 | 534,854,000 | 164,466,000 | 44.40% | 1.00% |
| Community Trust Financial Corporation | Ruston | LA | Bank | 48,260,000 | 359,389,000 | 603,924,000 | 244,535,000 | 68.04% | 1.00% |
| Provident Bancorp, Inc. | Amesbury | MA | Bank | 17,145,000 | 84,302,000 | 140,047,000 | 55,745,000 | 66.13% | 1.00% |
| Leader Bancorp, Inc. | Arlington | MA | Bank | 12,852,000 | 30,398,000 | 58,326,000 | 27,928,000 | 91.87% | 1.00% |
| Island Bancorp, Inc. | Edgartown | MA | Bank | 4,000,000 | 23,581,000 | 36,211,000 | 12,630,000 | 53.56% | 1.00% |
| New England Bancorp, Inc. | Hyannis | MA | Bank | 4,000,000 | 41,772,000 | 62,794,000 | 21,022,000 | 50.33% | 1.00% |
| Hyde Park Bancorp, Inc. | Hyde Park | MA | Bank | 18,724,000 | 1,684,000 | 16,584,000 | 14,900,000 | 884.80% | 1.82% |
| Rockport National Bancorp, Inc. | Rockport | MA | Bank | 3,000,000 | 37,136,000 | 43,069,000 | 5,933,000 | 15.98% | 1.00% |
| StonehamBank, A Co-operative Bank | Stoneham | MA | Bank | 13,813,000 | 46,880,000 | 93,356,000 | 46,476,000 | 99.14% | 1.50% |
| Monument Bank | Bethesda | MD | Bank | 8,515,000 | 34,983,000 | 54,279,000 | 19,296,000 | 55.16% | 1.00% |
| Eagle Bancorp, Inc. | Bethesda | MD | Bank | 56,600,000 | 413,330,000 | 697,027,000 | 283,697,000 | 68.64% | 1.00% |
| Howard Bancorp, Inc. | Ellicott City | MD | Bank | 12,562,000 | 135,545,000 | 180,731,000 | 45,186,000 | 33.34% | 1.00% |
| The Community Financial Corporation (Tri-County Financial Corporation) | Waldorf | MD | Bank | 20,000,000 | 244,812,000 | 284,275,000 | 39,463,000 | 16.12% | 1.00% |
| Katahdin Bankshares Corp. | Houlton | ME | Bank | 11,000,000 | 138,863,000 | 164,881,000 | 26,018,000 | 18.74% | 1.00% |
| Birmingham Bloomfield Bancshares, Inc. | Birmingham | MI | Bank | 4,621,000 | 33,793,000 | 55,602,000 | 21,809,000 | 64.54% | 1.00% |
| Level One Bancorp, Inc. | Farmington Hills | MI | Bank | 11,301,000 | 94,054,000 | 193,315,000 | 99,261,000 | 105.54% | 1.00% |
| Huron Valley State Bank | Milford | MI | Bank | 2,597,000 | 21,470,000 | 34,618,000 | 13,148,000 | 61.24% | 1.00% |
| Valley Financial Group, Ltd. | Saginaw | MI | Bank | 2,000,000 | 73,968,000 | 93,302,000 | 19,334,000 | 26.14% | 1.00% |
| Crestmark Bancorp, Inc. | Troy | MI | Bank | 8,250,000 | 198,199,000 | 373,588,000 | 175,389,000 | 88.49% | 1.00% |
| MidWest Bancorporation, Inc. | Eden Prairie | MN | Bank | 5,115,000 | 71,952,000 | 88,927,000 | 16,975,000 | 23.59% | 1.50% |
| Financial Services of Winger, Inc. | Fosston | MN | Bank | 4,069,000 | 60,984,000 | 82,431,000 | 21,447,000 | 35.17% | 1.50% |
| Kerkhoven Bancshares, Inc. | Kerkhoven | MN | Bank | 1,500,000 | 24,950,000 | 34,899,000 | 9,949,000 | 39.88% | 1.50% |
| Platinum Bancorp, Inc. | Oakdale | MN | Bank | 4,453,000 | 45,123,000 | 53,894,000 | 8,771,000 | 19.44% | 1.50% |
| Redwood Financial, Inc. | Redwood Falls | MN | Bank | 6,425,000 | 53,010,000 | 78,632,000 | 25,622,000 | 48.33% | 1.00% |
| McLeod Bancshares, Inc. | Shorewood | MN | Bank | 6,000,000 | 64,344,000 | 49,452,000 | (14,892,000) | -23.14% | 7.00% |
| Heritage Bancshares Group, Inc. | Willmar | MN | Bank | 11,000,000 | 149,302,000 | 182,139,000 | 32,837,000 | 21.99% | 1.50% |
| Fortune Financial Corporation | Arnold | MO | Bank | 3,255,000 | 46,918,000 | 44,779,000 | (2,139,000) | -4.56% | 7.00% |
| Security State Bancshares, Inc. | Charleston | MO | Bank | 22,000,000 | 177,012,000 | 220,759,000 | 43,747,000 | 24.71% | 1.00% |
| Triad Bancorp, Inc. | Frontenac | MO | Bank | 5,000,000 | 30,753,000 | 57,092,000 | 26,339,000 | 85.65% | 1.00% |
| Liberty Bancorp, Inc. | Liberty | MO | Bank | 16,169,000 | 98,984,000 | 120,773,000 | 21,789,000 | 22.01% | 1.00% |
| Southern Missouri Bancorp, Inc. | Poplar Bluff | MO | Bank | 20,000,000 | 188,556,000 | 241,514,000 | 52,958,000 | 28.09% | 1.00% |
| Great Southern Bancorp, Inc. | Springfield | MO | Bank | 57,943,000 | 201,374,000 | 297,191,000 | 95,817,000 | 47.58% | 1.00% |
| Cardinal Bancorp II, Inc. | Washington | MO | Bank | 6,251,000 | 62,590,000 | 77,948,000 | 15,358,000 | 24.54% | 1.50% |
| BankFirst Capital Corporation | Macon | MS | Bank | 5,000,000 | 176,916,000 | 185,743,000 | 8,827,000 | 4.99% | 4.00% |
| Cadence Financial Corporation (Encore Bancshares, Inc.) | Starkville | MS | Bank | 32,914,000 | 633,113,000 | 658,004,000 | 24,891,000 | 3.93% | 4.24% |
| Bancorp of Montana Holding Company | Missoula | MT | Bank | 1,460,000 | 3,332,000 | 8,438,000 | 5,106,000 | 153.24% | 1.50% |
| Premara Financial, Inc. | Charlotte | NC | Bank | 6,238,000 | 51,862,000 | 59,386,000 | 7,524,000 | 14.51% | 1.00% |
| Select Bancorp, Inc. | Greenville | NC | Bank | 7,645,000 | 30,424,000 | 57,711,000 | 27,287,000 | 89.69% | 1.00% |
| Union Bank & Trust Company | Oxford | NC | Bank | 6,200,000 | 38,779,000 | 49,563,000 | 10,784,000 | 27.81% | 1.00% |
| Providence Bank | Rocky Mount | NC | Bank | 4,250,000 | 31,805,000 | 37,386,000 | 5,581,000 | 17.55% | 1.00% |
| First Bancorp | Troy | NC | Bank | 63,500,000 | 496,528,000 | 585,702,000 | 89,174,000 | 17.96% | 1.00% |
| Live Oak Bancshares, Inc. | Wilmington | NC | Bank | 6,800,000 | 53,679,000 | 180,526,000 | 126,847,000 | 236.31% | 1.50% |
| Western State Agency, Inc. | Devils Lake | ND | Bank | 12,000,000 | 154,511,000 | 259,537,000 | 105,026,000 | 67.97% | 1.00% |
| Alerus Financial Corporation | Grand Forks | ND | Bank | 20,000,000 | 280,617,000 | 462,418,000 | 181,801,000 | 64.79% | 1.00% |
| The State Bank of Bartley | Bartley | NE | Bank | 2,380,000 | 28,031,000 | 39,942,000 | 11,911,000 | 42.49% | 1.50% |
| Banner County Ban Corporation | Harrisburg | NE | Bank | 2,427,000 | 50,318,000 | 70,220,000 | 19,902,000 | 39.55% | 1.50% |

| Institution | | | Bank or CDLF? | SBLF Funding Outstanding | Qualified Small Business Lending as of 9/30/2013 | | | | |
|--|--------------|-------|---------------|--------------------------|--|---------------|-----------------------------------|------------------------|----------------|
| Name | City | State | | | Baseline Level | Current Level | Increase (Decrease) over Baseline | % Change over Baseline | Resulting Rate |
| First State Holding Co. (Wilber Co.) | Lincoln | NE | Bank | 12,000,000 | 140,093,000 | 179,801,000 | 39,708,000 | 28.34% | 1.50% |
| Adbanc Inc. | Ogallala | NE | Bank | 21,905,000 | 250,743,000 | 320,196,000 | 69,453,000 | 27.70% | 1.00% |
| Centrix Bank & Trust | Bedford | NH | Bank | 24,500,000 | 238,789,000 | 361,226,000 | 122,437,000 | 51.27% | 1.00% |
| Northway Financial, Inc. | Berlin | NH | Bank | 23,593,000 | 109,533,000 | 146,707,000 | 37,174,000 | 33.94% | 1.00% |
| First Colebrook Bancorp, Inc. | Colebrook | NH | Bank | 8,623,000 | 61,976,000 | 71,198,000 | 9,222,000 | 14.88% | 1.00% |
| New Hampshire Thrift Bancshares, Inc. | Newport | NH | Bank | 23,000,000 | 145,102,000 | 189,898,000 | 44,796,000 | 30.87% | 1.00% |
| Guaranty Bancorp, Inc. | Woodsville | NH | Bank | 7,000,000 | 75,321,000 | 93,556,000 | 18,235,000 | 24.21% | 1.00% |
| Harmony Bank | Jackson | NJ | Bank | 3,500,000 | 15,897,000 | 46,916,000 | 31,019,000 | 195.12% | 1.00% |
| Regal Bank | Livingston | NJ | Bank | 7,000,000 | 25,872,000 | 49,182,000 | 23,310,000 | 90.10% | 1.00% |
| Two River Bancorp (Community Partners Bancorp) | Middletown | NJ | Bank | 12,000,000 | 173,978,000 | 203,775,000 | 29,797,000 | 17.13% | 1.00% |
| Stewardship Financial Corporation | Midland Park | NJ | Bank | 15,000,000 | 207,925,000 | 214,596,000 | 6,671,000 | 3.21% | 4.56% |
| Freedom Bank | Oradell | NJ | Bank | 4,000,000 | 32,445,000 | 61,498,000 | 29,053,000 | 89.55% | 1.00% |
| Hopewell Valley Community Bank | Pennington | NJ | Bank | 11,000,000 | 92,334,000 | 122,390,000 | 30,056,000 | 32.55% | 1.00% |
| Center Bancorp, Inc. | Union | NJ | Bank | 11,250,000 | 230,584,000 | 268,455,000 | 37,871,000 | 16.42% | 1.00% |
| Highlands Bancorp, Inc. | Vernon | NJ | Bank | 6,853,000 | 33,899,000 | 74,663,000 | 40,764,000 | 120.25% | 1.00% |
| Crest Savings Bancorp, Inc. | Wildwood | NJ | Bank | 2,500,000 | 23,276,000 | 26,775,000 | 3,499,000 | 15.03% | 1.00% |
| Meadows Bank | Las Vegas | NV | Bank | 8,500,000 | 47,672,000 | 120,029,000 | 72,357,000 | 151.78% | 1.00% |
| Alma Bank | Astoria | NY | Bank | 19,000,000 | 91,798,000 | 319,040,000 | 227,242,000 | 247.55% | 1.00% |
| Elmira Savings Bank (The Elmira Savings Bank, FSB) | Elmira | NY | Bank | 3,515,000 | 94,555,000 | 90,976,000 | (3,579,000) | -3.79% | 7.00% |
| Kinderhook Bank Corp. | Kinderhook | NY | Bank | 7,000,000 | 43,624,000 | 61,858,000 | 18,234,000 | 41.80% | 1.00% |
| Pathfinder Bancorp, Inc. | Oswego | NY | Bank | 13,000,000 | 70,953,000 | 96,939,000 | 25,986,000 | 36.62% | 1.00% |
| Greater Rochester Bancorp, Inc. | Rochester | NY | Bank | 7,000,000 | 58,822,000 | 107,920,000 | 49,098,000 | 83.47% | 1.00% |
| Catskill Hudson Bancorp, Inc. | Rock Hill | NY | Bank | 9,681,000 | 107,200,000 | 145,313,000 | 38,113,000 | 35.55% | 1.00% |
| Seneca-Cayuga Bancorp, Inc. | Seneca Falls | NY | Bank | 5,000,000 | 23,530,000 | 41,099,000 | 17,569,000 | 74.67% | 1.00% |
| Insight Bank | Columbus | OH | Bank | 4,250,000 | 16,410,000 | 36,482,000 | 20,072,000 | 122.32% | 1.00% |
| Community Independent Bancorp Inc. | West Salem | OH | Bank | 2,250,000 | 12,020,000 | 17,381,000 | 5,361,000 | 44.60% | 1.00% |
| Columbus First Bancorp, Inc | Worthington | OH | Bank | 6,150,000 | 36,629,000 | 49,616,000 | 12,987,000 | 35.46% | 1.00% |
| AmeriBank Holding Company | Collinsville | OK | Bank | 5,347,000 | 33,172,000 | 50,665,000 | 17,493,000 | 52.73% | 1.00% |
| Prime Bank Group | Edmond | OK | Bank | 4,456,000 | 20,960,000 | 47,176,000 | 26,216,000 | 125.08% | 1.50% |
| Central Service Corporation | Enid | OK | Bank | 7,000,000 | 148,029,000 | 204,651,000 | 56,622,000 | 38.25% | 1.50% |
| Regent Capital Corporation | Nowata | OK | Bank | 3,350,000 | 52,719,000 | 74,763,000 | 22,044,000 | 41.81% | 1.00% |
| F & M Bancorporation, Inc. | Tulsa | OK | Bank | 38,222,000 | 290,250,000 | 679,069,000 | 388,819,000 | 133.96% | 1.00% |
| Enterprise Financial Services Group, Inc. | Allison Park | PA | Bank | 5,000,000 | 87,306,000 | 89,051,000 | 1,745,000 | 2.00% | 5.00% |
| Team Capital Bank | Bethlehem | PA | Bank | 22,412,000 | 127,647,000 | 188,371,000 | 60,724,000 | 47.57% | 1.00% |
| CBT Financial Corp. | Clearfield | PA | Bank | 10,000,000 | 64,719,000 | 102,437,000 | 37,718,000 | 58.28% | 1.00% |
| DNB Financial Corporation | Downingtown | PA | Bank | 13,000,000 | 120,810,000 | 135,867,000 | 15,057,000 | 12.46% | 1.00% |
| Monument Bank | Doylestown | PA | Bank | 2,970,000 | 19,715,000 | 54,568,000 | 34,853,000 | 176.78% | 1.00% |
| MileStone Bank | Doylestown | PA | Bank | 5,100,000 | 46,778,000 | 91,960,000 | 45,182,000 | 96.59% | 1.00% |
| Emclair Financial Corp. | Emlenton | PA | Bank | 5,000,000 | 56,761,000 | 62,026,000 | 5,265,000 | 9.28% | 2.00% |
| First Resource Bank | Exton | PA | Bank | 5,083,000 | 33,001,000 | 43,227,000 | 10,226,000 | 30.99% | 1.00% |
| Centric Financial Corporation | Harrisburg | PA | Bank | 7,492,000 | 51,106,000 | 93,367,000 | 42,261,000 | 82.69% | 1.00% |
| AmeriServ Financial, Inc. | Johnstown | PA | Bank | 21,000,000 | 116,684,000 | 177,353,000 | 60,669,000 | 51.99% | 1.00% |
| Jonestown Bank and Trust Company | Jonestown | PA | Bank | 4,000,000 | 40,820,000 | 63,287,000 | 22,467,000 | 55.04% | 1.00% |
| The Victory Bancorp, Inc. | Limerick | PA | Bank | 3,431,000 | 27,247,000 | 59,655,000 | 32,408,000 | 118.94% | 1.00% |
| Phoenix Bancorp, Inc. | Minersville | PA | Bank | 2,625,000 | 30,752,000 | 44,177,000 | 13,425,000 | 43.66% | 1.00% |
| Penn Liberty Financial Corp. | Wayne | PA | Bank | 20,000,000 | 134,752,000 | 169,469,000 | 34,717,000 | 25.76% | 1.00% |
| Franklin Security Bancorp, Inc. | Wilkes-Barre | PA | Bank | 6,955,000 | 26,190,000 | 36,273,000 | 10,083,000 | 38.50% | 1.00% |
| York Traditions Bank | York | PA | Bank | 5,115,000 | 78,487,000 | 92,890,000 | 14,403,000 | 18.35% | 1.00% |
| Codorus Valley Bancorp, Inc. | York | PA | Bank | 25,000,000 | 168,440,000 | 236,291,000 | 67,851,000 | 40.28% | 1.00% |
| GrandSouth Bancorporation | Greenville | SC | Bank | 15,422,000 | 92,718,000 | 112,939,000 | 20,221,000 | 21.81% | 1.00% |

| Institution | | | Bank or CDFL? | SBLF Funding Outstanding | Qualified Small Business Lending as of 9/30/2013 | | | | |
|---|-------------------|-------|---------------|--------------------------|--|---------------|-----------------------------------|------------------------|----------------|
| Name | City | State | | | Baseline Level | Current Level | Increase (Decrease) over Baseline | % Change over Baseline | Resulting Rate |
| TCB Corporation | Greenwood | SC | Bank | 8,640,000 | 56,579,000 | 75,035,000 | 18,456,000 | 32.62% | 1.50% |
| Carolina Alliance Bank | Spartanburg | SC | Bank | 5,000,000 | 65,737,000 | 93,302,000 | 27,565,000 | 41.93% | 1.00% |
| BHCB Holding Company | Rapid City | SD | Bank | 2,000,000 | 33,830,000 | 57,071,000 | 23,241,000 | 68.70% | 1.50% |
| Merchants and Planters Bancshares, Inc. | Bolivar | TN | Bank | 2,000,000 | 19,097,000 | 21,539,000 | 2,442,000 | 12.79% | 1.00% |
| CapitalMark Bank & Trust | Chattanooga | TN | Bank | 18,212,000 | 134,549,000 | 254,990,000 | 120,441,000 | 89.51% | 1.00% |
| Planters Financial Group, Inc. | Clarksville | TN | Bank | 20,000,000 | 150,359,000 | 197,140,000 | 46,781,000 | 31.11% | 1.50% |
| Southern Heritage Bancshares, Inc. | Cleveland | TN | Bank | 5,105,000 | 58,099,000 | 65,290,000 | 7,191,000 | 12.38% | 1.00% |
| Landmark Community Bank | Collierville | TN | Bank | 8,000,000 | 29,258,000 | 62,801,000 | 33,543,000 | 114.65% | 1.00% |
| Evolve Bancorp, Inc. | Cordova | TN | Bank | 4,699,000 | 19,101,000 | 57,697,000 | 38,596,000 | 202.06% | 1.00% |
| Sequatchie Valley Bancshares, Inc. | Dunlap | TN | Bank | 2,500,000 | 43,802,000 | 19,392,000 | (24,410,000) | -55.73% | 10.80% |
| Franklin Financial Network, Inc. | Franklin | TN | Bank | 10,000,000 | 18,547,000 | 57,382,000 | 38,835,000 | 209.39% | 1.00% |
| Sumner Bank & Trust | GALLATIN | TN | Bank | 4,264,000 | 27,039,000 | 23,752,000 | (3,287,000) | -12.16% | 7.00% |
| Carroll Financial Services, Inc. | Huntingdon | TN | Bank | 3,000,000 | 61,317,000 | 79,838,000 | 18,521,000 | 30.21% | 1.00% |
| Moneytree Corporation | Lenoir City | TN | Bank | 9,992,000 | 69,543,000 | 81,380,000 | 11,837,000 | 17.02% | 1.00% |
| Magna Bank | Memphis | TN | Bank | 18,350,000 | 52,040,000 | 78,135,000 | 26,095,000 | 50.14% | 1.00% |
| Independent Holdings, Inc. | Memphis | TN | Bank | 34,900,000 | 44,702,000 | 80,114,000 | 35,412,000 | 79.22% | 1.00% |
| InsCorp, Inc. | Nashville | TN | Bank | 3,000,000 | 27,512,000 | 47,505,000 | 19,993,000 | 72.67% | 1.00% |
| Avenue Financial Holdings, Inc. | Nashville | TN | Bank | 18,950,000 | 74,788,000 | 131,057,000 | 56,269,000 | 75.24% | 1.00% |
| SmartFinancial, Inc. | Pigeon Forge | TN | Bank | 12,000,000 | 37,009,000 | 75,221,000 | 38,212,000 | 103.25% | 1.00% |
| Community First Bancshares, Inc. | Union City | TN | Bank | 30,852,000 | 302,286,000 | 354,092,000 | 51,806,000 | 17.14% | 1.00% |
| Liberty Capital Bancshares, Inc. | Addison | TX | Bank | 1,500,000 | 16,656,000 | 44,901,000 | 28,245,000 | 169.58% | 1.50% |
| Happy Bancshares, Inc. | Amarillo | TX | Bank | 31,929,000 | 436,374,000 | 582,336,000 | 145,962,000 | 33.45% | 1.00% |
| Frontier Bancshares, Inc. | Austin | TX | Bank | 6,184,000 | 64,967,000 | 164,172,000 | 99,205,000 | 152.70% | 1.50% |
| Southwestern Bancorp, Inc. | Boerne | TX | Bank | 1,500,000 | 22,454,000 | 28,887,000 | 6,433,000 | 28.65% | 1.50% |
| BMC Bancshares, Inc. | Dallas | TX | Bank | 1,206,000 | 8,021,000 | 13,620,000 | 5,599,000 | 69.80% | 1.50% |
| Veritex Holdings, Inc. | Dallas | TX | Bank | 8,000,000 | 100,919,000 | 216,082,000 | 115,163,000 | 114.11% | 1.00% |
| Sovereign Bancshares, Inc. | Dallas | TX | Bank | 24,500,000 | 183,263,000 | 247,200,000 | 63,937,000 | 34.89% | 1.00% |
| Hilltop Holdings, Inc. (PlainsCapital Corporation) | Dallas | TX | Bank | 114,068,000 | 1,268,723,000 | 1,276,379,000 | 7,656,000 | 0.60% | 5.00% |
| Pioneer Bank, SSB | Drippings Springs | TX | Bank | 3,004,000 | 26,496,000 | 63,531,000 | 37,035,000 | 139.78% | 1.00% |
| First Texas BHC, Inc. | Fort Worth | TX | Bank | 29,822,000 | 137,852,000 | 224,614,000 | 86,762,000 | 62.94% | 1.00% |
| BOH Holdings, Inc. | Houston | TX | Bank | 23,938,350 | 204,550,000 | 298,114,000 | 93,564,000 | 45.74% | 1.00% |
| Third Coast Bancshares, Inc. (Third Coast Bank SSB) | Humble | TX | Bank | 8,673,000 | 57,861,000 | 146,386,000 | 88,525,000 | 153.00% | 1.00% |
| Joaquin Bankshares Inc. | Huntington | TX | Bank | 3,908,000 | 40,722,000 | 50,584,000 | 9,862,000 | 24.22% | 1.50% |
| AIM Bancshares, Inc. | Levelland | TX | Bank | 9,100,000 | 75,752,000 | 189,786,000 | 114,034,000 | 150.54% | 1.50% |
| McLaughlin Bancshares, Inc. | Ralls | TX | Bank | 6,600,000 | 47,152,000 | 78,775,000 | 31,623,000 | 67.07% | 1.00% |
| FB BanCorp | San Antonio | TX | Bank | 12,000,000 | 39,335,000 | 102,181,000 | 62,846,000 | 159.77% | 1.00% |
| The ANB Corporation | Terrell | TX | Bank | 37,000,000 | 402,694,000 | 501,589,000 | 98,895,000 | 24.56% | 1.00% |
| Steele Holdings, Inc. | Tyler | TX | Bank | 8,282,000 | 31,142,000 | 53,662,000 | 22,520,000 | 72.31% | 1.50% |
| Cache Valley Banking Company | Logan | UT | Bank | 11,670,000 | 183,070,000 | 217,545,000 | 34,475,000 | 18.83% | 1.00% |
| LCA Bank Corporation | Park City | UT | Bank | 2,727,000 | 14,000 | 4,022,000 | 4,008,000 | 28628.57% | 1.00% |
| Medallion Bank | Salt Lake City | UT | Bank | 26,303,000 | 229,336,000 | 398,749,000 | 169,413,000 | 73.87% | 1.00% |
| Virginia Heritage Bank | Fairfax | VA | Bank | 15,300,000 | 85,644,000 | 151,259,000 | 65,615,000 | 76.61% | 1.00% |
| Blue Ridge Bankshares, Inc. | Luray | VA | Bank | 4,500,000 | 18,920,000 | 23,492,000 | 4,572,000 | 24.16% | 1.00% |
| Heritage Bankshares, Inc. | Norfolk | VA | Bank | 7,800,000 | 68,967,000 | 77,370,000 | 8,403,000 | 12.18% | 1.00% |
| TowneBank | Portsmouth | VA | Bank | 76,458,000 | 814,570,000 | 985,718,000 | 171,148,000 | 21.01% | 1.00% |
| WashingtonFirst Bankshares, Inc. | Reston | VA | Bank | 17,796,000 | 199,484,000 | 271,218,000 | 71,734,000 | 35.96% | 1.00% |
| Xenith Bankshares, Inc. | Richmond | VA | Bank | 8,381,000 | 82,147,000 | 192,769,000 | 110,622,000 | 134.66% | 1.00% |
| Citizens Community Bank | South Hill | VA | Bank | 4,000,000 | 38,520,000 | 43,789,000 | 5,269,000 | 13.68% | 1.00% |
| United Financial Banking Companies, Inc. | Vienna | VA | Bank | 3,000,000 | 76,307,000 | 87,914,000 | 11,607,000 | 15.21% | 1.00% |
| Puget Sound Bank | Bellevue | WA | Bank | 9,886,000 | 105,417,000 | 137,471,000 | 32,054,000 | 30.41% | 1.00% |

| Institution | | | Bank or CDLF? | SBLF Funding Outstanding | Qualified Small Business Lending as of 9/30/2013 | | | | |
|---|-----------------|-------|---------------|--------------------------|--|---------------|-----------------------------------|------------------------|----------------|
| Name | City | State | | | Baseline Level | Current Level | Increase (Decrease) over Baseline | % Change over Baseline | Resulting Rate |
| U&I Financial Corp | Lynnwood | WA | Bank | 5,500,000 | 39,884,000 | 58,325,000 | 18,441,000 | 46.24% | 1.00% |
| W.T.B. Financial Corporation | Spokane | WA | Bank | 44,571,000 | 878,103,000 | 1,012,029,000 | 133,926,000 | 15.25% | 1.00% |
| Deerfield Financial Corporation | Deerfield | WI | Bank | 3,650,000 | 22,665,000 | 27,537,000 | 4,872,000 | 21.50% | 1.50% |
| Nicolet Bankshares, Inc. | Green Bay | WI | Bank | 24,400,000 | 371,324,000 | 415,284,000 | 43,960,000 | 11.84% | 1.00% |
| Sword Financial Corporation | Horicon | WI | Bank | 17,000,000 | 194,468,000 | 244,589,000 | 50,121,000 | 25.77% | 1.50% |
| First American Investment, Inc. | Hudson | WI | Bank | 1,705,710 | 21,408,000 | 26,847,000 | 5,439,000 | 25.41% | 1.50% |
| County Bancorp, Inc. | Manitowoc | WI | Bank | 15,000,000 | 379,555,000 | 456,392,000 | 76,837,000 | 20.24% | 1.00% |
| Northern Bankshares, Inc. | McFarland | WI | Bank | 22,000,000 | 138,447,000 | 162,671,000 | 24,224,000 | 17.50% | 1.50% |
| First Menasha Bancshares, Inc. | Neenah | WI | Bank | 10,000,000 | 65,516,000 | 95,872,000 | 30,356,000 | 46.33% | 1.00% |
| PFSB Bancorporation, Inc. | Pigeon Falls | WI | Bank | 1,500,000 | 25,844,000 | 32,561,000 | 6,717,000 | 25.99% | 1.00% |
| First Bank of Charleston Inc. | Charleston | WV | Bank | 3,345,000 | 24,923,000 | 30,986,000 | 6,063,000 | 24.33% | 1.00% |
| MVB Financial Corp. | Fairmont | WV | Bank | 8,500,000 | 53,681,000 | 141,304,000 | 87,623,000 | 163.23% | 1.00% |
| Financial Security Corporation | Basin | WY | Bank | 5,000,000 | 67,715,000 | 87,474,000 | 19,759,000 | 29.18% | 1.00% |
| OBDC Small Business Finance | Oakland | CA | CDLF | 219,000 | 2,473,000 | 5,081,000 | 2,608,000 | 105.46% | 2.00% |
| California Coastal Rural Development Corporation | Salinas | CA | CDLF | 870,000 | 9,545,000 | 7,728,000 | (1,817,000) | -19.04% | 2.00% |
| Low Income Investment Fund | San Francisco | CA | CDLF | 7,490,000 | 26,595,000 | 58,950,000 | 32,355,000 | 121.66% | 2.00% |
| Opportunity Fund Northern California | San Jose | CA | CDLF | 2,236,000 | 5,935,000 | 17,167,000 | 11,232,000 | 189.25% | 2.00% |
| Valley Economic Development Center, Inc. | Van Nuys | CA | CDLF | 661,000 | 9,581,000 | 30,102,000 | 20,521,000 | 214.18% | 2.00% |
| Rural Community Assistance Corporation | West Sacramento | CA | CDLF | 4,300,000 | 6,104,000 | 10,613,000 | 4,509,000 | 73.87% | 2.00% |
| Colorado Enterprise Fund, Inc. | Denver | CO | CDLF | 463,000 | 5,721,000 | 8,581,000 | 2,860,000 | 49.99% | 2.00% |
| Greater New Haven Community Loan Fund | New Haven | CT | CDLF | 525,000 | 758,000 | 1,299,000 | 541,000 | 71.37% | 2.00% |
| Partners for the Common Good, Inc. | Washington | DC | CDLF | 1,009,000 | 4,888,000 | 5,969,000 | 1,081,000 | 22.12% | 2.00% |
| Building Hope... A Charter School Facilities Fund | Washington | DC | CDLF | 2,091,000 | 23,190,000 | 39,965,000 | 16,775,000 | 72.34% | 2.00% |
| Access to Capital for Entrepreneurs, Inc. (Appalachian Community Enter) | Cleveland | GA | CDLF | 188,000 | 2,773,000 | 8,080,000 | 5,307,000 | 191.38% | 2.00% |
| IFF | Chicago | IL | CDLF | 8,294,000 | 108,261,000 | 145,275,000 | 37,014,000 | 34.19% | 2.00% |
| Federation of Appalachian Housing Enterprises, Inc. | Berea | KY | CDLF | 2,063,000 | 4,137,000 | 8,484,000 | 4,347,000 | 105.08% | 2.00% |
| Community Ventures Corporation | Lexington | KY | CDLF | 1,045,000 | 3,451,000 | 9,942,000 | 6,491,000 | 188.09% | 2.00% |
| Capital Link, Inc. | Boston | MA | CDLF | 198,000 | 1,420,000 | 4,743,000 | 3,323,000 | 234.01% | 2.00% |
| Common Capital, Inc. (The Western Massachusetts Enterprise Fund, Inc. | Holyoke | MA | CDLF | 200,000 | 3,526,000 | 4,094,000 | 568,000 | 16.11% | 2.00% |
| Boston Community Loan Fund, Inc. | Roxbury | MA | CDLF | 4,410,000 | 11,378,000 | 16,157,000 | 4,779,000 | 42.00% | 2.00% |
| Enterprise Community Loan Fund, Inc. | Columbia | MD | CDLF | 8,817,000 | 8,849,000 | 15,186,000 | 6,337,000 | 71.61% | 2.00% |
| Coastal Enterprises, Inc. | Wiscasset | ME | CDLF | 2,316,000 | 17,640,000 | 22,332,000 | 4,692,000 | 26.60% | 2.00% |
| Midwest Minnesota Community Development Corporation | Detroit Lakes | MN | CDLF | 4,600,000 | 29,638,000 | 54,007,000 | 24,369,000 | 82.22% | 2.00% |
| Nonprofits Assistance Fund | Minneapolis | MN | CDLF | 686,000 | 6,979,000 | 10,860,000 | 3,881,000 | 55.61% | 2.00% |
| Community Reinvestment Fund, Inc. | Minneapolis | MN | CDLF | 5,100,000 | 60,645,000 | 45,755,000 | (14,890,000) | -24.55% | 2.00% |
| Montana Community Development Corporation | Missoula | MT | CDLF | 585,000 | 8,737,000 | 14,504,000 | 5,767,000 | 66.01% | 2.00% |
| Mountain BizCapital, Inc. | Asheville | NC | CDLF | 197,000 | 1,791,000 | 3,358,000 | 1,567,000 | 87.49% | 2.00% |
| Nebraska Enterprise Fund | Oakland | NE | CDLF | 197,000 | 1,454,000 | 4,167,000 | 2,713,000 | 186.59% | 2.00% |
| La Fuerza Unida Community Development Corporation | East Norwich | NY | CDLF | 42,000 | 86,000 | 502,000 | 416,000 | 483.72% | 2.00% |
| Leviticus 25:23 Alternative Fund, Inc. | Elmsford | NY | CDLF | 750,000 | 2,218,000 | 4,240,000 | 2,022,000 | 91.16% | 2.00% |
| TruFund Financial Services (Seedco Financial Services, Inc.) | New York | NY | CDLF | 2,500,000 | 33,651,000 | 40,103,000 | 6,452,000 | 19.17% | 2.00% |
| Primary Care Development Corporation | New York | NY | CDLF | 4,000,000 | 33,280,000 | 22,917,000 | (10,363,000) | -31.14% | 2.00% |
| Economic and Community Development Institute, Inc. | Columbus | OH | CDLF | 203,000 | 2,728,000 | 7,627,000 | 4,899,000 | 179.58% | 2.00% |
| Citizen Potawatomi Community Development Corporation | Shawnee | OK | CDLF | 490,000 | 6,505,000 | 12,213,000 | 5,708,000 | 87.75% | 2.00% |
| The Progress Fund | Greensburg | PA | CDLF | 1,052,000 | 12,109,000 | 19,528,000 | 7,419,000 | 61.27% | 2.00% |
| Community First Fund | Lancaster | PA | CDLF | 862,000 | 11,002,000 | 14,321,000 | 3,319,000 | 30.17% | 2.00% |
| The Reinvestment Fund, Inc. | Philadelphia | PA | CDLF | 11,708,000 | 113,268,000 | 123,201,000 | 9,933,000 | 8.77% | 2.00% |
| Northside Community Development Fund | Pittsburgh | PA | CDLF | 250,000 | 2,190,000 | 2,644,000 | 454,000 | 20.73% | 2.00% |
| Bridgeway Capital, Inc. | Pittsburgh | PA | CDLF | 1,820,000 | 18,674,000 | 24,636,000 | 5,962,000 | 31.93% | 2.00% |
| Charleston Citywide Local Development Corporation | Charleston | SC | CDLF | 1,000,000 | 1,799,000 | 3,206,000 | 1,407,000 | 78.21% | 2.00% |

| Institution | | | Bank or CDLF? | SBLF Funding Outstanding | Qualified Small Business Lending as of 9/30/2013 | | | | |
|---|------------------|-------|---------------|--------------------------|--|---------------|-----------------------------------|------------------------|----------------|
| Name | City | State | | | Baseline Level | Current Level | Increase (Decrease) over Baseline | % Change over Baseline | Resulting Rate |
| Lowcountry Housing Trust, Incorporated | North Charleston | SC | CDLF | 392,000 | 96,000 | 552,000 | 456,000 | 475.00% | 2.00% |
| Rural Electric Economic Development, Inc. | Madison | SD | CDLF | 1,230,000 | 11,116,000 | 9,126,000 | (1,990,000) | -17.90% | 2.00% |
| South Eastern Development Foundation | Sioux Falls | SD | CDLF | 240,000 | 2,486,000 | 4,936,000 | 2,450,000 | 98.55% | 2.00% |
| Northeast South Dakota Economic Corporation | Sisseton | SD | CDLF | 1,000,000 | 11,758,000 | 13,010,000 | 1,252,000 | 10.65% | 2.00% |
| CEN-TEX Certified Development Corporation | Austin | TX | CDLF | 489,000 | 3,435,000 | 6,725,000 | 3,290,000 | 95.78% | 2.00% |
| PeopleFund | Austin | TX | CDLF | 500,000 | 6,412,000 | 7,492,000 | 1,080,000 | 16.84% | 2.00% |
| ECDC Enterprise Development Group | Arlington | VA | CDLF | 320,000 | 1,402,000 | 2,947,000 | 1,545,000 | 110.20% | 2.00% |
| NCB Capital Impact | Arlington | VA | CDLF | 8,218,000 | 95,578,000 | 125,588,000 | 30,010,000 | 31.40% | 2.00% |
| Vermont Community Loan Fund, Inc. | Montpelier | VT | CDLF | 1,247,000 | 12,787,000 | 16,226,000 | 3,439,000 | 26.89% | 2.00% |
| Craft3 (ShoreBank Enterprise Group, Pacific) | Ilwaco | WA | CDLF | 1,867,000 | 24,108,000 | 46,322,000 | 22,214,000 | 92.14% | 2.00% |
| Impact Seven, Incorporated | Almena | WI | CDLF | 4,000,000 | 13,344,000 | 23,260,000 | 9,916,000 | 74.31% | 2.00% |
| Forward Community Investments, Inc. | Madison | WI | CDLF | 470,000 | 3,964,000 | 5,822,000 | 1,858,000 | 46.87% | 2.00% |
| Wisconsin Women's Business Initiative Corporation | Milwaukee | WI | CDLF | 391,000 | 4,562,000 | 8,568,000 | 4,006,000 | 87.81% | 2.00% |

APPENDIX E: INSTITUTION-SPECIFIC REPORTING ON BUSINESS LENDING BY SBLF BANKS





Community Banks Participating in SBLF

Report on Information from 09/30/2013 Call Reports transmitted with January 2014 Report

| Institution | | | Region | Total Assets | Baseline Lending | | | | Baseline Business Lending | Q3 2013 | | | | Q3 2013 Business Lending | % Change over Baseline |
|--------------------------------------|---------------------|-------|--------------|--------------|-------------------------|---------------------------------------|-------------------------|---------------------|---------------------------|-------------------------|---------------------------------------|-------------------------|---------------------|--------------------------|------------------------|
| Name | City | State | | | Commercial & Industrial | Owner-Occupied Commercial Real Estate | Agricultural Production | Secured by Farmland | | Commercial & Industrial | Owner-Occupied Commercial Real Estate | Agricultural Production | Secured by Farmland | | |
| Southern National Corporation | Andalusia | AL | Southeast | 418,945 | 42,858 | 46,952 | 5,776 | 59,822 | 155,408 | 39,399 | 49,328 | 13,291 | 83,858 | 185,876 | 20% |
| Southern States Bancshares, Inc. | Anniston | AL | Southeast | 260,917 | 18,236 | 18,732 | - | 943 | 37,910 | 34,927 | 46,124 | 1,641 | 1,505 | 84,197 | 122% |
| ServisFirst Bancshares, Inc. | Birmingham | AL | Southeast | 3,395,974 | 440,705 | 209,801 | 25,580 | 22,243 | 698,328 | 1,178,257 | 667,401 | 49,141 | 66,508 | 1,961,307 | 181% |
| BancIndependent, Incorporated | Sheffield | AL | Southeast | 1,089,104 | 126,083 | 110,777 | 6,105 | 15,249 | 258,213 | 170,849 | 144,325 | 2,634 | 16,475 | 334,283 | 29% |
| First Partners Bank (SouthCity Bank) | Vestavia Hills | AL | Southeast | 169,822 | 34,442 | 6,394 | - | - | 40,837 | 43,025 | 8,284 | - | - | 51,309 | 26% |
| First Service Bancshares, Inc. | Greenbrier | AR | Southeast | 211,986 | 20,458 | 31,269 | 6,055 | 16,417 | 74,199 | 15,169 | 23,955 | 5,570 | 20,750 | 65,444 | -12% |
| Rock Bancshares, Inc. | Little Rock | AR | Southeast | 193,664 | 49,812 | 7,116 | - | 1,804 | 58,732 | 94,874 | 3,515 | - | 1,231 | 99,620 | 70% |
| Western Alliance Bancorporation | Phoenix | AZ | Southwest | 8,713,287 | 550,987 | 1,063,943 | 186 | 4,343 | 1,619,459 | 1,249,365 | 1,544,512 | 1,790 | 5,749 | 2,801,416 | 73% |
| Seacoast Commerce Bank | Chula Vista | CA | West | 274,854 | 12,916 | 42,691 | - | 456 | 56,063 | 2,036 | 221,521 | - | 295 | 223,852 | 299% |
| First Northern Community Bancorp | Dixon | CA | West | 876,020 | 88,431 | 116,575 | 30,680 | 22,480 | 258,166 | 94,486 | 117,349 | 26,070 | 23,611 | 261,516 | 1% |
| Community Valley Bank | El Centro | CA | West | 112,298 | 11,352 | 2,293 | - | - | 13,645 | 9,866 | 20,554 | 258 | 630 | 31,308 | 129% |
| Redwood Capital Bancorp | Eureka | CA | West | 251,012 | 16,119 | 28,172 | 120 | 2,899 | 47,311 | 12,567 | 44,517 | 68 | 3,081 | 60,233 | 27% |
| Central Valley Community Bancorp | Fresno | CA | West | 1,091,189 | 82,216 | 110,907 | 18,420 | 41,356 | 252,898 | 86,682 | 155,171 | 43,670 | 39,857 | 325,380 | 29% |
| Banc of California, Inc. | Irvine | CA | West | 3,715,509 | 553 | 8,525 | - | - | 9,077 | 255,675 | 129,305 | - | 1,594 | 386,574 | 4159% |
| Silvergate Capital Corporation | La Jolla | CA | West | 616,437 | 3,408 | 6,233 | - | - | 9,641 | 4,382 | 10,777 | - | - | 15,159 | 57% |
| California Bank of Commerce | Lafayette | CA | West | 375,499 | 60,775 | 13,291 | 390 | 1,632 | 76,087 | 138,880 | 49,739 | 806 | 1,347 | 190,772 | 151% |
| 1st Enterprise Bank | Los Angeles | CA | West | 731,337 | 52,170 | 35,416 | - | - | 87,586 | 157,308 | 112,529 | - | - | 269,837 | 208% |
| GBC Holdings, Inc. | Los Angeles | CA | West | 466,859 | 48,872 | 64,652 | - | 468 | 113,992 | 91,536 | 97,760 | 30 | - | 189,326 | 66% |
| ProAmerica (Promerica Bank) | Los Angeles | CA | West | 147,562 | 18,665 | 28,650 | - | - | 47,315 | 17,625 | 43,337 | - | - | 60,962 | 29% |
| Partners Bank of California | Mission Viejo | CA | West | 127,123 | 40,849 | 13,880 | - | - | 54,729 | 39,322 | 19,868 | - | - | 59,190 | 8% |
| Bank of Commerce Holdings | Redding | CA | West | 928,131 | 133,779 | 72,044 | 1,173 | 7,805 | 214,800 | 162,763 | 80,101 | 765 | 5,166 | 248,795 | 16% |
| Security California Bancorp | Riverside | CA | West | 536,624 | 112,334 | 67,475 | - | - | 179,809 | 92,528 | 119,399 | 1,227 | 625 | 213,779 | 19% |
| Pacific Coast Bankers' Bancshares | San Francisco | CA | West | 567,355 | 10,701 | 35,168 | - | - | 45,869 | 14,516 | 16,873 | - | - | 31,389 | -32% |
| Capital Bank | San Juan Capistrano | CA | West | 173,590 | 13,838 | 11,346 | 98 | 2,915 | 25,575 | 15,300 | 57,287 | - | 1,501 | 74,088 | 190% |
| Founders Bancorp | San Luis Obispo | CA | West | 156,925 | 24,400 | 11,516 | - | 2,218 | 38,133 | 25,631 | 30,446 | - | 2,042 | 58,119 | 52% |
| The Bank of Santa Barbara | Santa Barbara | CA | West | 155,405 | 11,319 | 9,943 | - | 1,514 | 22,776 | 36,272 | 18,680 | - | - | 54,952 | 141% |
| Summit State Bank | Santa Rosa | CA | West | 459,272 | 40,612 | 33,151 | 2,405 | 24,934 | 101,101 | 36,000 | 57,306 | 5,367 | 23,191 | 121,864 | 21% |
| FNB Bancorp | South San Francisco | CA | West | 926,346 | 67,974 | 69,468 | 0 | 5,118 | 142,560 | 47,197 | 90,705 | - | 4,442 | 142,344 | 0% |
| Columbine Capital Corp. | Buena Vista | CO | Southwest | 331,635 | 22,300 | 16,986 | 221 | 893 | 40,399 | 37,831 | 42,186 | 107 | 2,003 | 82,127 | 103% |
| CoBiz Financial Inc. | Denver | CO | Southwest | 2,772,228 | 464,781 | 390,528 | 5,703 | 2,295 | 863,306 | 591,933 | 411,088 | - | 155 | 1,003,176 | 16% |
| Steele Street Bank Corporation | Denver | CO | Southwest | 489,525 | 34,832 | 32,612 | - | - | 67,443 | 51,006 | 61,236 | - | - | 112,242 | 66% |
| Verus Acquisition Group, Inc. | Fort Collins | CO | Southwest | 268,343 | 14,365 | 45,134 | 88 | 7,204 | 66,792 | 22,050 | 56,257 | - | 2,478 | 80,785 | 21% |
| Morgan Capital Corporation | Fort Morgan | CO | Southwest | 147,796 | 13,330 | 6,289 | 4,169 | 3,950 | 27,738 | 14,660 | 8,437 | 3,556 | 4,700 | 31,353 | 13% |
| CIC Bancshares, Inc. | Greenwood Village | CO | Southwest | 440,829 | 1,433 | 21 | - | - | 1,454 | 62,796 | 62,211 | - | 658 | 125,665 | 8544% |
| Salisbury Bancorp, Inc. | Lakeville | CT | Northeast | 585,256 | 23,290 | 49,853 | 402 | 5,666 | 79,211 | 34,132 | 70,271 | 913 | 4,193 | 109,509 | 38% |
| BNC Financial Group, Inc. | New Canaan | CT | Northeast | 680,318 | 3,378 | 24,882 | - | - | 28,259 | 71,061 | 83,283 | - | - | 154,344 | 446% |
| SBT Bancorp, Inc. | Simsbury | CT | Northeast | 406,989 | 14,128 | 21,168 | - | - | 35,295 | 15,696 | 40,966 | - | - | 56,662 | 61% |
| Community Bank Delaware | Lewes | DE | Mid-Atlantic | 142,756 | 6,962 | 20,018 | 574 | 1,175 | 28,729 | 4,768 | 31,175 | 164 | 1,044 | 37,151 | 29% |
| Platinum Bank | Brandon | FL | Southeast | 450,042 | 57,110 | 95,349 | 222 | 10,816 | 163,496 | 82,460 | 101,528 | 155 | 15,533 | 199,676 | 22% |
| Marquis Bank | Coral Gables | FL | Southeast | 199,231 | 1,427 | 9,846 | - | - | 11,273 | 16,548 | 24,659 | - | - | 41,207 | 266% |
| First Green Bank | Eustis | FL | Southeast | 253,467 | 6,491 | 23,716 | - | 133 | 30,339 | 18,011 | 64,698 | - | 146 | 82,855 | 173% |
| Broward Financial Holdings, Inc. | Fort Lauderdale | FL | Southeast | 156,019 | 14,234 | - | - | - | 14,234 | 19,740 | 36,939 | - | - | 56,679 | 298% |
| FineMark Holdings, Inc. | Fort Myers | FL | Southeast | 674,823 | 12,141 | 15,375 | 112 | - | 27,628 | 40,379 | 32,606 | - | - | 72,985 | 164% |
| Bank of Central Florida | Lakeland | FL | Southeast | 319,594 | 29,147 | 27,541 | - | - | 56,888 | 56,424 | 56,362 | 500 | 158 | 113,444 | 100% |
| Community Southern Bank | Lakeland | FL | Southeast | 220,452 | 13,773 | 15,059 | 813 | 115 | 29,759 | 30,595 | 25,651 | 45 | 224 | 56,515 | 90% |
| CBOS Bankshares, Inc. | Merritt Island | FL | Southeast | 136,379 | 5,742 | 40,542 | - | - | 46,283 | 4,159 | 27,408 | - | - | 31,567 | -32% |
| Ovation Holdings, Inc. | Naples | FL | Southeast | 328,917 | 1,684 | 8,013 | - | - | 9,698 | 7,830 | 46,935 | - | 1,095 | 55,860 | 476% |
| Florida Community Bankshares, Inc. | Ocala | FL | Southeast | 606,751 | 29,777 | 56,970 | 8,266 | 68,740 | 163,752 | 18,413 | 43,614 | 4,640 | 58,052 | 124,719 | -24% |
| Jefferson Bank of Florida | Oldsmar | FL | Southeast | 184,819 | 9,021 | 4,870 | - | - | 13,891 | 20,436 | 16,770 | - | - | 37,206 | 168% |
| Florida Shores Bancorp, Inc. | Pompano Beach | FL | Southeast | 557,035 | 35,523 | 38,461 | - | - | 73,983 | 48,460 | 99,291 | - | 1,474 | 149,225 | 102% |
| Gulfstream Bancshares, Inc. | Stuart | FL | Southeast | 561,940 | 123,553 | 159,465 | - | - | 283,018 | 95,049 | 138,583 | - | - | 233,632 | -17% |
| Florida Business BancGroup, Inc. | Tampa | FL | Southeast | 488,606 | 41,885 | 46,924 | - | - | 88,809 | 59,254 | 94,399 | - | 941 | 154,594 | 74% |

| Institution | | | Region | Total Assets | Baseline Lending | | | | Baseline Business Lending | Q3 2013 | | | | Q3 2013 Business Lending | % Change over Baseline |
|--|------------------|-------|--------------|--------------|-------------------------|---------------------------------------|-------------------------|---------------------|---------------------------|-------------------------|---------------------------------------|-------------------------|---------------------|--------------------------|------------------------|
| Name | City | State | | | Commercial & Industrial | Owner-Occupied Commercial Real Estate | Agricultural Production | Secured by Farmland | | Commercial & Industrial | Owner-Occupied Commercial Real Estate | Agricultural Production | Secured by Farmland | | |
| HomeBancorp, Inc. | Tampa | FL | Southeast | 653,303 | 3,043 | 10,343 | - | - | 13,385 | 5,227 | 19,064 | - | - | 24,291 | 81% |
| Resurgens Bancorp | Atlanta | GA | Southeast | 89,867 | 8,251 | 4,870 | - | 1,965 | 15,086 | 11,592 | 13,006 | - | 1,832 | 26,430 | 75% |
| The Peoples Bank of Talbotton | Talbotton | GA | Southeast | 40,505 | 647 | 3,191 | - | 2,106 | 5,943 | 2,710 | 2,687 | 158 | 4,637 | 10,192 | 71% |
| Lowndes Bancshares, Inc. | Valdosta | GA | Southeast | 221,015 | 10,135 | 38,874 | - | - | 49,009 | 11,519 | 28,768 | 4,336 | 2,878 | 47,501 | -3% |
| Heartland Financial USA, Inc. | Dubuque | IA | Midwest | 4,991,185 | 453,188 | 485,865 | 80,290 | 194,060 | 1,213,402 | 756,886 | 509,733 | 153,326 | 192,679 | 1,612,624 | 33% |
| Liberty Financial Services, Inc. | Sioux City | IA | Midwest | 281,404 | 36,186 | 17,912 | 4,466 | 5,574 | 64,138 | 45,099 | 28,782 | 5,598 | 13,736 | 93,215 | 45% |
| Commercial Financial Corp | Storm Lake | IA | Midwest | 506,327 | 128,275 | 39,538 | 38,076 | 22,656 | 228,545 | 130,771 | 50,582 | 67,411 | 43,848 | 292,612 | 28% |
| D. L. Evans Bancorp | Burley | ID | West | 976,442 | 69,464 | 158,111 | 107,881 | 60,654 | 396,108 | 94,366 | 160,321 | 88,133 | 84,634 | 427,454 | 8% |
| Heartland Bancorp, Inc. | Bloomington | IL | Midwest | 2,772,967 | 189,580 | 219,980 | 36,243 | 38,855 | 484,658 | 242,860 | 329,956 | 53,410 | 84,705 | 710,931 | 47% |
| Southern Illinois Bancorp, Inc. | Carmi | IL | Midwest | 377,772 | 37,465 | 17,420 | 18,888 | 21,392 | 95,164 | 54,215 | 43,862 | 26,906 | 26,303 | 151,286 | 59% |
| First Busey Corporation | Champaign | IL | Midwest | 3,462,800 | 313,814 | 356,714 | 38,356 | 57,626 | 766,509 | 356,864 | 380,909 | 43,351 | 105,010 | 886,134 | 16% |
| United Community Bancorp, Inc. | Chatham | IL | Midwest | 1,273,430 | 98,783 | 95,660 | 47,661 | 74,408 | 316,511 | 124,953 | 86,440 | 55,821 | 100,742 | 367,956 | 16% |
| Illinois State Bancorp, Inc. | Chicago | IL | Midwest | 388,359 | 21,057 | 38,971 | - | 160 | 60,188 | 19,500 | 59,441 | - | 3,443 | 82,384 | 37% |
| Signature Bancorporation, Inc. | Chicago | IL | Midwest | 418,487 | 88,196 | 37,019 | - | - | 125,214 | 183,067 | 61,987 | - | - | 245,054 | 96% |
| Prime Banc Corp. | Dieterich | IL | Midwest | 528,266 | 21,310 | 6,268 | 9,480 | 22,344 | 59,401 | 31,519 | 60,022 | 10,457 | 27,416 | 129,414 | 118% |
| First Eldorado Bancshares, Inc. | Eldorado | IL | Midwest | 281,294 | 7,789 | - | 7,887 | 25,857 | 41,533 | 17,130 | 12,491 | 8,555 | 42,656 | 80,832 | 95% |
| First Community Financial Corporation | Elgin | IL | Midwest | 170,073 | 6,337 | 26,075 | - | 582 | 32,993 | 9,655 | 29,570 | - | 20 | 39,245 | 19% |
| Community First Bancorp, Inc. | Fairview Heights | IL | Midwest | 206,968 | 23,850 | 23,424 | - | 7,233 | 54,507 | 41,162 | 38,711 | - | 8,521 | 88,394 | 62% |
| Fisher Bancorp, Inc. | Fisher | IL | Midwest | 95,743 | 4,244 | 6,329 | 2,457 | 2,741 | 15,770 | 3,270 | 7,972 | 4,876 | 5,564 | 21,672 | 37% |
| Merchants and Manufacturers Bank Corporation | Joliet | IL | Midwest | 184,607 | 35,038 | 20,722 | - | - | 55,760 | 60,707 | 21,206 | - | - | 81,913 | 47% |
| Tri-County Financial Group, Inc. | Mendota | IL | Midwest | 940,341 | 23,912 | 24,883 | 30,134 | 35,679 | 114,608 | 48,858 | 49,302 | 49,793 | 71,178 | 219,131 | 91% |
| QCR Holdings, Inc. | Moline | IL | Midwest | 2,524,435 | 367,351 | 208,531 | 2,449 | 9,305 | 587,636 | 359,641 | 236,015 | 3,242 | 11,355 | 610,253 | 4% |
| Bancorp Financial, Inc. | Oak Brook | IL | Midwest | 506,834 | 5,790 | 9,122 | - | - | 14,912 | 14,569 | 8,666 | - | - | 23,235 | 56% |
| People First Bancshares, Inc. | Pana | IL | Midwest | 383,793 | 48,975 | 9,408 | 48,716 | 13,254 | 120,352 | 72,778 | 28,513 | 75,861 | 29,886 | 207,038 | 72% |
| First Bankers Trustshares, Inc. | Quincy | IL | Midwest | 778,107 | 34,554 | 53,147 | 20,504 | 20,851 | 129,056 | 53,429 | 85,518 | 33,559 | 27,962 | 200,468 | 55% |
| First Robinson Financial Corporation | Robinson | IL | Midwest | 237,326 | 14,280 | 7,658 | 3,957 | 8,804 | 34,699 | 13,664 | 20,404 | 2,461 | 14,154 | 50,683 | 46% |
| Community Illinois Corporation | Rock Falls | IL | Midwest | 253,499 | 29,250 | 10,821 | 16,703 | 22,134 | 78,909 | 29,068 | 17,967 | 18,673 | 24,151 | 89,859 | 14% |
| Town and Country Financial Corporation | Springfield | IL | Midwest | 672,449 | 34,830 | 59,359 | 6,536 | 5,550 | 106,274 | 38,388 | 94,447 | 7,525 | 6,421 | 146,781 | 38% |
| First Savings Financial Group, Inc. | Clarksville | IN | Midwest | 655,599 | 26,351 | 39,403 | - | - | 65,754 | 24,112 | 57,589 | 2,237 | 4,608 | 88,546 | 35% |
| Horizon Bancorp | Michigan City | IN | Midwest | 1,781,099 | 63,712 | 84,200 | 3,279 | 7,424 | 158,615 | 95,797 | 132,842 | 2,666 | 11,178 | 242,483 | 53% |
| First Merchants Corporation | Muncie | IN | Midwest | 4,312,283 | 673,225 | 515,331 | 115,882 | 147,472 | 1,451,909 | 652,356 | 429,319 | 98,489 | 133,581 | 1,313,745 | -10% |
| MutualFirst Financial, Inc. | Muncie | IN | Midwest | 1,404,341 | 71,501 | 108,819 | - | - | 180,319 | 65,843 | 92,612 | 1,231 | 3,651 | 163,337 | -9% |
| AMB Financial Corp. | Munster | IN | Midwest | 177,431 | 7,638 | 14,191 | - | - | 21,829 | 8,605 | 21,647 | - | 927 | 31,179 | 43% |
| Community Bank Shares of Indiana, Inc. | New Albany | IN | Midwest | 831,995 | 87,840 | 88,791 | 690 | 4,709 | 182,030 | 94,702 | 108,916 | 1,511 | 5,890 | 211,019 | 16% |
| Bern Bancshares, Inc. | Bern | KS | Midwest | 82,129 | 4,671 | 46 | 14,941 | 3,145 | 22,803 | 2,519 | 646 | 18,607 | 4,574 | 26,346 | 16% |
| Brotherhood Bancshares, Inc. | Kansas City | KS | Midwest | 518,087 | 42,681 | 28,067 | - | 3,673 | 74,420 | 29,389 | 17,095 | - | 2,577 | 49,061 | -34% |
| UBT Bancshares, Inc. | Marysville | KS | Midwest | 543,078 | 41,004 | 27,943 | 44,044 | 63,137 | 176,128 | 51,476 | 21,982 | 64,045 | 103,572 | 241,075 | 37% |
| Osborne Investments, Inc. | Osborne | KS | Midwest | 55,057 | 1,549 | 451 | 9,025 | 4,697 | 15,722 | 3,149 | 2,031 | 10,859 | 12,587 | 28,626 | 82% |
| Freedom Bancshares, Inc. | Overland Park | KS | Midwest | 149,277 | 17,081 | 18,667 | - | - | 35,748 | 28,790 | 23,532 | - | - | 52,322 | 46% |
| Equity Bancshares, Inc. | Wichita | KS | Midwest | 1,156,337 | 72,242 | 44,546 | 7,028 | 5,075 | 128,891 | 134,556 | 141,343 | 16,329 | 30,775 | 323,003 | 151% |
| Magnolia Bancshares Inc. | Hodgenville | KY | Midwest | 144,150 | 6,246 | 10,176 | 2,066 | 14,930 | 33,419 | 6,345 | 16,608 | 4,252 | 15,671 | 42,876 | 28% |
| FCB Bancorp, Inc. | Louisville | KY | Midwest | 466,273 | 27,761 | 54,823 | - | 56 | 82,640 | 17,018 | 70,663 | - | 1,346 | 89,027 | 8% |
| First Guaranty Bancshares, Inc. | Hammond | LA | Southwest | 1,422,936 | 85,481 | 82,769 | 17,727 | 12,111 | 198,087 | 139,455 | 146,615 | 28,457 | 11,425 | 325,952 | 65% |
| MidSouth Bancorp, Inc. | Lafayette | LA | Southwest | 1,860,470 | 185,803 | 126,929 | 6,367 | 3,019 | 322,119 | 405,789 | 213,717 | 17,561 | 25,715 | 662,782 | 106% |
| Quachita Bancshares Corp. | Monroe | LA | Southwest | 664,161 | 47,682 | 73,761 | 14,288 | 9,163 | 144,892 | 65,322 | 96,740 | 16,073 | 27,381 | 205,516 | 42% |
| Progressive Bancorp, Inc. | Monroe | LA | Southwest | 476,220 | 54,604 | 42,050 | 1,671 | 7,976 | 106,300 | 50,541 | 46,879 | 11,160 | 27,076 | 135,656 | 28% |
| First NBC Bank Holding Company | New Orleans | LA | Southwest | 3,156,054 | 288,580 | 212,783 | - | 261 | 501,625 | 773,370 | 358,862 | - | 1,129 | 1,133,361 | 126% |
| Community Trust Financial Corporation | Ruston | LA | Southwest | 3,164,261 | 294,044 | 150,315 | 1,480 | 24,990 | 470,828 | 961,446 | 283,874 | 100 | 20,986 | 1,266,406 | 169% |
| Provident Bancorp, Inc. | Amesbury | MA | Northeast | 616,402 | 17,487 | 70,118 | - | 93 | 87,697 | 76,644 | 88,472 | - | 5 | 165,121 | 88% |
| Leader Bancorp, Inc. | Arlington | MA | Northeast | 631,425 | 7,075 | 24,647 | - | - | 31,722 | 22,283 | 52,734 | - | - | 75,017 | 136% |
| Island Bancorp, Inc. | Edgartown | MA | Northeast | 156,960 | 2,672 | 20,909 | - | - | 23,581 | 6,261 | 29,964 | - | - | 36,225 | 54% |
| New England Bancorp, Inc. | Hyannis | MA | Northeast | 208,701 | 9,707 | 19,019 | - | - | 28,726 | 31,745 | 35,042 | - | - | 66,787 | 133% |
| Hyde Park Bancorp, Inc. | Hyde Park | MA | Northeast | 1,210,218 | 1,142 | 542 | - | - | 1,684 | 85,183 | 9,178 | - | - | 94,361 | 5505% |
| Rockport National Bancorp, Inc. | Rockport | MA | Northeast | 209,033 | 9,222 | 29,422 | - | - | 38,643 | 7,113 | 37,171 | - | - | 44,284 | 15% |
| StonehamBank, A Co-operative Bank | Stoneham | MA | Northeast | 461,231 | 22,466 | 24,415 | - | - | 46,880 | 39,156 | 54,200 | - | - | 93,356 | 99% |
| Eagle Bancorp, Inc. | Bethesda | MD | Mid-Atlantic | 3,489,552 | 325,046 | 122,093 | - | - | 447,140 | 740,052 | 310,746 | - | 509 | 1,051,307 | 135% |
| Monument Bank | Bethesda | MD | Mid-Atlantic | 411,895 | 20,990 | 12,522 | - | 576 | 34,088 | 26,065 | 29,120 | - | 1,001 | 56,186 | 65% |
| Howard Bancorp, Inc. | Ellicott City | MD | Mid-Atlantic | 466,612 | 91,705 | 41,681 | - | 794 | 134,180 | 101,362 | 89,008 | - | 2,836 | 193,206 | 44% |

| Institution | | | Region | Total Assets | Baseline Lending | | | | Baseline Business Lending | Q3 2013 | | | | Q3 2013 Business Lending | % Change over Baseline |
|--|------------------|-------|--------------|--------------|-------------------------|---------------------------------------|-------------------------|---------------------|---------------------------|-------------------------|---------------------------------------|-------------------------|---------------------|--------------------------|------------------------|
| Name | City | State | | | Commercial & Industrial | Owner-Occupied Commercial Real Estate | Agricultural Production | Secured by Farmland | | Commercial & Industrial | Owner-Occupied Commercial Real Estate | Agricultural Production | Secured by Farmland | | |
| Tri-County Financial Corporation | Waldorf | MD | Mid-Atlantic | 991,352 | 121,233 | 137,607 | - | - | 258,840 | 107,582 | 192,575 | - | - | 300,157 | 16% |
| Katahdin Bankshares Corp. | Houlton | ME | Northeast | 615,731 | 95,319 | 50,102 | 3,312 | 2,706 | 151,438 | 119,723 | 63,001 | 6,734 | 4,718 | 194,176 | 28% |
| Birmingham Bloomfield Bancshares, Inc. | Birmingham | MI | Midwest | 182,077 | 15,987 | 17,807 | - | - | 33,793 | 27,383 | 29,171 | - | - | 56,554 | 67% |
| Level One Bancorp, Inc. | Farmington Hills | MI | Midwest | 595,978 | 39,110 | 24,606 | - | - | 63,716 | 132,891 | 81,033 | - | - | 213,924 | 236% |
| Huron Valley State Bank | Milford | MI | Midwest | 86,756 | 5,648 | 16,506 | - | 191 | 22,345 | 10,433 | 25,689 | - | 164 | 36,286 | 62% |
| Valley Financial Group, Ltd. | Saginaw | MI | Midwest | 185,161 | 38,248 | 36,190 | - | 90 | 74,528 | 54,682 | 40,879 | - | 740 | 96,301 | 29% |
| Crestmark Bancorp, Inc. | Troy | MI | Midwest | 472,842 | 153,006 | 1,470 | - | - | 154,475 | 374,984 | - | - | - | 374,984 | 143% |
| MidWest Bancorporation, Inc. | Eden Prairie | MN | Midwest | 214,509 | 35,697 | 18,909 | - | - | 54,606 | 19,655 | 11,137 | 25,845 | 34,203 | 90,840 | 66% |
| Financial Services of Winger, Inc. | Fosston | MN | Midwest | 142,200 | 19,628 | 7,190 | 25,894 | 21,040 | 73,751 | 20,521 | 11,950 | 37,933 | 37,552 | 107,956 | 46% |
| Kerkhoven Bankshares, Inc | Kerkhoven | MN | Midwest | 65,866 | 4,668 | 9,381 | 3,475 | 7,114 | 24,637 | 10,189 | 18,466 | 3,759 | 5,964 | 38,378 | 56% |
| Platinum Bancorp, Inc. | Oakdale | MN | Midwest | 136,064 | 19,145 | 27,015 | - | 573 | 46,733 | 30,741 | 28,565 | - | 2,357 | 61,663 | 32% |
| Redwood Financial, Inc. | Redwood Falls | MN | Midwest | 218,315 | 24,855 | 31,378 | - | - | 56,233 | 20,498 | 20,632 | 22,102 | 16,108 | 79,340 | 41% |
| McLeod Bankshares, Inc. | Shorewood | MN | Midwest | 415,994 | 23,330 | 3,763 | 5,618 | 2,780 | 35,490 | 13,073 | 27,792 | 5,321 | 2,753 | 48,939 | 38% |
| Heritage Bancshares Group, Inc. | Willmar | MN | Midwest | 401,454 | 59,801 | 32,540 | 48,486 | 28,555 | 169,382 | 65,125 | 17,323 | 62,608 | 57,964 | 203,020 | 20% |
| Fortune Financial Corporation | Arnold | MO | Midwest | 141,440 | 24,461 | 23,534 | - | 370 | 48,366 | 21,281 | 25,222 | - | - | 46,503 | -4% |
| Security State Bancshares, Inc. | Charleston | MO | Midwest | 642,803 | 56,094 | 57,781 | 30,314 | 49,925 | 194,113 | 54,527 | 57,826 | 50,772 | 97,892 | 261,017 | 34% |
| Triad Bancorp, Inc. | Frontenac | MO | Midwest | 221,372 | 15,530 | 16,895 | - | 820 | 33,245 | 28,023 | 37,145 | - | 3,842 | 69,010 | 108% |
| Liberty Bancorp, Inc. | Liberty | MO | Midwest | 455,528 | 23,445 | 53,499 | - | - | 76,944 | 51,549 | 68,247 | 300 | 1,445 | 121,541 | 58% |
| Southern Missouri Bancorp, Inc. | Poplar Bluff | MO | Midwest | 823,714 | 52,833 | 42,934 | 28,817 | 26,753 | 151,336 | 77,140 | 87,031 | 58,394 | 54,701 | 277,266 | 83% |
| Great Southern Bancorp, Inc. | Springfield | MO | Midwest | 3,601,009 | 138,613 | 136,926 | 4,079 | 21,896 | 301,514 | 216,469 | 141,457 | 2,055 | 32,462 | 392,443 | 30% |
| Cardinal Bancorp II, Inc. | Washington | MO | Midwest | 296,606 | 34,752 | 29,431 | 190 | 5,482 | 69,855 | 38,925 | 35,036 | 422 | 9,960 | 84,343 | 21% |
| BankFirst Capital Corporation | Macon | MS | Southeast | 718,968 | 58,754 | 75,633 | 9,765 | 42,941 | 187,093 | 77,417 | 79,542 | 9,571 | 42,662 | 209,192 | 12% |
| Bancorp of Montana Holding Company | Missoula | MT | West | 49,472 | 1,208 | 1,994 | - | 444 | 3,646 | 7,835 | 4,129 | - | 693 | 12,657 | 247% |
| Premara Financial, Inc. | Charlotte | NC | Southeast | 235,572 | 15,263 | 23,523 | - | - | 38,786 | 24,806 | 41,233 | - | 528 | 66,567 | 72% |
| Select Bancorp, Inc. | Greenville | NC | Southeast | 275,709 | 18,588 | 9,146 | - | 1,726 | 29,459 | 18,811 | 29,771 | - | 9,471 | 58,053 | 97% |
| Union Bank & Trust Company | Oxford | NC | Southeast | 226,686 | 19,991 | 15,549 | 10 | 3,112 | 38,662 | 23,660 | 18,517 | 1,795 | 5,422 | 49,394 | 28% |
| Providence Bank | Rocky Mount | NC | Southeast | 213,425 | 14,547 | 12,644 | 780 | 826 | 28,797 | 17,139 | 20,912 | 830 | 1,597 | 40,478 | 41% |
| First Bancorp | Troy | NC | Southeast | 3,171,848 | 140,198 | 279,520 | 7,734 | 36,485 | 463,938 | 134,604 | 383,630 | 9,792 | 44,203 | 572,229 | 23% |
| Live Oak Bancshares, Inc. | Wilmington | NC | Southeast | 426,905 | 27,794 | 73,668 | - | - | 101,462 | 112,789 | 118,846 | - | - | 231,635 | 128% |
| Western State Agency, Inc. | Devils Lake | ND | Midwest | 646,359 | 97,220 | 32,153 | 14,569 | 6,955 | 150,896 | 205,253 | 24,015 | 16,834 | 13,010 | 259,112 | 72% |
| Alerus Financial Corporation | Grand Forks | ND | Midwest | 1,283,776 | 180,756 | 65,037 | 33,489 | 10,852 | 290,134 | 303,672 | 130,733 | 36,945 | 11,011 | 482,361 | 66% |
| The State Bank of Bartley | Bartley | NE | Midwest | 83,664 | 13,050 | 4,465 | 8,672 | 2,035 | 28,221 | 13,628 | 5,647 | 11,787 | 6,160 | 37,222 | 32% |
| Banner County Ban Corporation | Harrisburg | NE | Midwest | 110,184 | 8,633 | 2,981 | 30,815 | 15,368 | 57,797 | 9,859 | 8,051 | 32,834 | 26,615 | 77,359 | 34% |
| First State Holding Co. (Wilber Co.) | Lincoln | NE | Midwest | 397,677 | 40,835 | 24,786 | 25,570 | 36,985 | 128,176 | 50,395 | 35,406 | 43,950 | 74,679 | 204,430 | 59% |
| Adbanc Inc. | Ogallala | NE | Midwest | 599,326 | 69,479 | 59,439 | 77,060 | 51,676 | 257,654 | 73,359 | 64,073 | 115,174 | 85,017 | 337,623 | 31% |
| Centrix Bank & Trust | Bedford | NH | Northeast | 909,137 | 105,188 | 145,314 | - | - | 250,502 | 167,061 | 217,676 | - | - | 384,737 | 54% |
| Northway Financial, Inc. | Berlin | NH | Northeast | 898,215 | 44,870 | 67,422 | - | - | 112,292 | 87,404 | 66,390 | - | - | 153,794 | 37% |
| First Colebrook Bancorp, Inc. | Colebrook | NH | Northeast | 261,559 | 25,654 | 42,281 | 569 | 82 | 68,585 | 34,259 | 42,888 | 627 | 692 | 78,466 | 14% |
| New Hampshire Thrift Bancshares, Inc. | Newport | NH | Northeast | 1,239,327 | 57,064 | 80,606 | - | - | 137,670 | 59,844 | 150,602 | 29 | 95 | 210,570 | 53% |
| Guaranty Bancorp, Inc. | Woodsville | NH | Northeast | 391,719 | 37,136 | 48,710 | 454 | 1,988 | 88,288 | 35,399 | 61,139 | 408 | 3,033 | 99,979 | 13% |
| Harmony Bank | Jackson Township | NJ | Mid-Atlantic | 199,050 | 929 | 9,059 | - | 1,000 | 10,988 | 4,785 | 40,504 | - | 2,520 | 47,809 | 335% |
| Regal Bank | Livingston | NJ | Mid-Atlantic | 312,828 | 1,682 | 24,190 | - | - | 25,872 | 3,837 | 45,345 | - | - | 49,182 | 90% |
| Community Partners Bancorp | Middletown | NJ | Mid-Atlantic | 757,112 | 48,487 | 135,572 | - | 204 | 184,262 | 46,533 | 164,278 | - | 151 | 210,962 | 14% |
| Stewardship Financial Corporation | Midland Park | NJ | Mid-Atlantic | 687,622 | 48,805 | 156,337 | - | 1,053 | 206,195 | 25,850 | 168,561 | - | 1,962 | 196,373 | -5% |
| Freedom Bank | Oradell | NJ | Mid-Atlantic | 202,661 | 14,905 | 17,540 | - | - | 32,445 | 18,632 | 41,470 | - | - | 60,102 | 85% |
| Hopewell Valley Community Bank | Pennington | NJ | Mid-Atlantic | 449,043 | 9,885 | 76,725 | - | 876 | 87,485 | 17,515 | 111,065 | - | 732 | 129,312 | 48% |
| Center Bancorp, Inc. | Union | NJ | Mid-Atlantic | 1,643,673 | 106,353 | 113,588 | - | - | 219,941 | 181,433 | 94,115 | - | - | 275,548 | 25% |
| Highlands Bancorp, Inc. | Vernon | NJ | Mid-Atlantic | 209,093 | 16,612 | 17,780 | - | 777 | 35,168 | 25,172 | 48,470 | - | 794 | 74,436 | 112% |
| Crest Savings Bancorp, Inc. | Wildwood | NJ | Mid-Atlantic | 423,416 | 3,201 | 17,693 | - | - | 20,894 | 5,107 | 21,668 | - | - | 26,775 | 28% |
| Meadows Bank | Las Vegas | NV | West | 323,221 | 29,330 | 21,164 | - | - | 50,495 | 100,634 | 40,829 | - | - | 141,463 | 180% |
| Alma Bank | Astoria | NY | Mid-Atlantic | 963,326 | 66,760 | 25,038 | - | - | 91,798 | 177,340 | 178,411 | - | - | 355,751 | 288% |
| The Elmira Savings Bank, FSB | Elmira | NY | Mid-Atlantic | 519,807 | 36,668 | 58,685 | - | - | 95,353 | 25,254 | 67,012 | - | - | 92,266 | -3% |
| Kinderhook Bank Corp. | Kinderhook | NY | Mid-Atlantic | 335,049 | 18,911 | 19,028 | 58 | 2,330 | 40,328 | 25,504 | 41,669 | 109 | 366 | 67,648 | 68% |
| Pathfinder Bancorp, Inc. | Oswego | NY | Mid-Atlantic | 553,178 | 25,983 | 48,698 | - | 786 | 75,467 | 35,145 | 64,244 | - | 1,059 | 100,448 | 33% |
| Greater Rochester Bancorp, Inc. | Rochester | NY | Mid-Atlantic | 378,311 | 43,466 | 17,134 | - | 1,736 | 62,336 | 86,897 | 39,538 | - | 1,124 | 127,559 | 105% |
| Catskill Hudson Bancorp, Inc. | Rock Hill | NY | Mid-Atlantic | 425,547 | 42,715 | 54,456 | 277 | 1,075 | 98,522 | 50,111 | 95,298 | 441 | 1,181 | 147,031 | 49% |
| Seneca-Cayuga Bancorp, Inc. | Seneca Falls | NY | Mid-Atlantic | 268,132 | 6,963 | 9,127 | - | - | 16,090 | 21,612 | 14,644 | 3,283 | 4,109 | 43,648 | 171% |
| Insight Bank | Columbus | OH | Midwest | 200,233 | 3,205 | 10,876 | - | - | 14,080 | 11,752 | 24,730 | - | - | 36,482 | 159% |

| Institution | | | Region | Total Assets | Baseline Lending | | | | Baseline Business Lending | Q3 2013 | | | | Q3 2013 Business Lending | % Change over Baseline |
|---|-------------------|-------|--------------|--------------|-------------------------|---------------------------------------|-------------------------|---------------------|---------------------------|-------------------------|---------------------------------------|-------------------------|---------------------|--------------------------|------------------------|
| Name | City | State | | | Commercial & Industrial | Owner-Occupied Commercial Real Estate | Agricultural Production | Secured by Farmland | | Commercial & Industrial | Owner-Occupied Commercial Real Estate | Agricultural Production | Secured by Farmland | | |
| Community Independent Bancorp Inc. | West Salem | OH | Midwest | 93,773 | 2,587 | 5,795 | 133 | 3,505 | 12,020 | 2,764 | 9,811 | 462 | 4,306 | 17,343 | 44% |
| Columbus First Bancorp, Inc | Worthington | OH | Midwest | 252,813 | 19,279 | 15,132 | - | - | 34,411 | 26,620 | 24,470 | - | 941 | 52,031 | 51% |
| AmeriBank Holding Company | Collinsville | OK | Southwest | 159,057 | 19,843 | 9,416 | 1,590 | 2,324 | 33,172 | 31,184 | 14,128 | 3,256 | 1,877 | 50,445 | 52% |
| Prime Bank Group | Edmond | OK | Southwest | 193,538 | 7,722 | 10,116 | 53 | 1,742 | 19,632 | 27,204 | 25,440 | 86 | 1,171 | 53,901 | 175% |
| Central Service Corporation | Enid | OK | Southwest | 578,700 | 43,994 | 23,240 | 43,232 | 38,675 | 149,140 | 86,310 | 30,442 | 55,506 | 43,045 | 215,303 | 44% |
| Regent Capital Corporation | Nowata | OK | Southwest | 187,869 | 24,582 | 17,779 | 3,616 | 9,416 | 55,394 | 38,358 | 30,045 | 3,150 | 8,733 | 80,286 | 45% |
| F & M Bancorporation, Inc. | Tulsa | OK | Southwest | 2,467,937 | 382,607 | 142,344 | 17 | 955 | 525,922 | 1,085,140 | 178,362 | 13 | 3,148 | 1,266,663 | 141% |
| Enterprise Financial Services Group, Inc. | Allison Park | PA | Mid-Atlantic | 266,688 | 37,394 | 75,423 | - | 424 | 113,241 | 42,109 | 92,178 | - | 188 | 134,475 | 19% |
| Team Capital Bank | Bethlehem | PA | Mid-Atlantic | 949,224 | 58,221 | 58,748 | - | - | 116,969 | 71,462 | 119,424 | - | 665 | 191,551 | 64% |
| CBT Financial Corp. | Clearfield | PA | Mid-Atlantic | 424,821 | 34,922 | 32,578 | 1,037 | 6,580 | 75,117 | 49,022 | 28,747 | 5,095 | 24,914 | 107,778 | 43% |
| DNB Financial Corporation | Downingtown | PA | Mid-Atlantic | 650,516 | 38,960 | 73,668 | - | 10,878 | 123,505 | 57,831 | 92,636 | - | 14,972 | 165,439 | 34% |
| MileStone Bank | Doylestown | PA | Mid-Atlantic | 197,670 | 17,161 | 29,937 | - | - | 47,098 | 50,219 | 48,291 | - | 25 | 98,535 | 109% |
| Monument Bank | Doylestown | PA | Mid-Atlantic | 242,672 | 1,478 | 17,409 | - | 828 | 19,715 | 1,241 | 52,563 | - | 764 | 54,568 | 177% |
| Emclair Financial Corp. | Emlenton | PA | Mid-Atlantic | 524,967 | 33,244 | 25,924 | - | - | 59,168 | 39,282 | 26,718 | 49 | 424 | 66,473 | 12% |
| First Resource Bank | Exton | PA | Mid-Atlantic | 161,343 | 11,395 | 19,652 | - | 1,119 | 32,165 | 12,297 | 29,610 | - | 1,059 | 42,966 | 34% |
| Centric Financial Corporation | Harrisburg | PA | Mid-Atlantic | 305,915 | 16,476 | 31,487 | 193 | 1,397 | 49,553 | 34,942 | 58,006 | 518 | 1,638 | 95,104 | 92% |
| AmeriServ Financial, Inc. | Johnstown | PA | Mid-Atlantic | 1,010,440 | 92,509 | 62,972 | - | 178 | 155,659 | 115,818 | 101,579 | - | 2,481 | 219,878 | 41% |
| Jonestown Bank and Trust Company | Jonestown | PA | Mid-Atlantic | 418,893 | 6,880 | 29,539 | 11 | 4,390 | 40,820 | 14,406 | 41,195 | 236 | 6,488 | 62,325 | 53% |
| The Victory Bancorp, Inc. | Limerick | PA | Mid-Atlantic | 141,249 | 13,913 | 8,245 | - | 1,757 | 23,916 | 29,997 | 28,467 | - | 2,595 | 61,059 | 155% |
| Phoenix Bancorp, Inc. | Minersville | PA | Mid-Atlantic | 136,160 | 5,262 | 4,097 | - | - | 9,359 | 14,819 | 28,930 | - | 190 | 43,939 | 369% |
| Franklin Security Bancorp, Inc. | Plains | PA | Mid-Atlantic | 225,648 | 18,122 | 7,022 | - | - | 25,143 | 24,325 | 18,764 | - | - | 43,089 | 71% |
| Penn Liberty Financial Corp. | Wayne | PA | Mid-Atlantic | 560,388 | 58,496 | 84,723 | - | - | 143,218 | 81,786 | 101,865 | - | - | 183,651 | 28% |
| Codorus Valley Bancorp, Inc. | York | PA | Mid-Atlantic | 1,113,667 | 46,618 | 104,503 | 1,653 | 24,703 | 177,476 | 95,569 | 130,780 | 3,435 | 38,278 | 268,062 | 51% |
| York Traditions Bank | York | PA | Mid-Atlantic | 285,376 | 48,533 | 27,986 | - | 2,156 | 78,674 | 55,903 | 43,744 | - | 1,804 | 101,451 | 29% |
| GrandSouth Bancorporation | Greenville | SC | Southeast | 387,539 | 49,299 | 43,148 | 114 | 3,454 | 96,015 | 57,265 | 43,698 | 463 | 443 | 101,869 | 6% |
| TCB Corporation | Greenwood | SC | Southeast | 326,593 | 16,375 | 40,863 | - | 1,056 | 58,294 | 21,611 | 50,747 | - | 1,321 | 73,679 | 26% |
| Carolina Alliance Bank | Spartanburg | SC | Southeast | 244,421 | 29,943 | 34,965 | - | 830 | 65,737 | 30,715 | 60,836 | - | 423 | 91,974 | 40% |
| BHCB Holding Company | Rapid City | SD | Midwest | 137,552 | 11,260 | 16,312 | 1,696 | 1,627 | 30,895 | 21,560 | 33,518 | 162 | 3,185 | 58,425 | 89% |
| Merchants and Planters Bancshares, Inc. | Bolivar | TN | Southeast | 89,683 | 5,479 | 10,527 | 361 | 2,730 | 19,097 | 6,234 | 11,810 | 444 | 3,199 | 21,687 | 14% |
| CapitalMark Bank & Trust | Chattanooga | TN | Southeast | 798,447 | 88,680 | 45,869 | - | - | 134,549 | 144,828 | 117,339 | - | 499 | 262,666 | 95% |
| Planters Financial Group, Inc. | Clarksville | TN | Southeast | 775,826 | 59,970 | 67,388 | 12,733 | 34,238 | 174,327 | 68,774 | 113,204 | 19,190 | 47,169 | 248,337 | 42% |
| Southern Heritage Bancshares, Inc. | Cleveland | TN | Southeast | 235,963 | 26,826 | 30,355 | 33 | 1,077 | 58,290 | 20,094 | 43,932 | - | - | 64,026 | 10% |
| Landmark Community Bank | Collierville | TN | Southeast | 576,823 | 17,728 | 11,183 | 94 | 263 | 29,268 | 37,440 | 24,688 | - | - | 62,128 | 112% |
| Evolve Bancorp, Inc. | Cordova | TN | Southeast | 272,826 | 8,239 | 5,161 | 2,211 | 3,490 | 19,101 | 16,148 | 43,443 | 4,584 | 2,368 | 66,543 | 248% |
| Sequatchie Valley Bancshares, Inc. | Dunlap | TN | Southeast | 594,955 | 2,685 | 34,739 | 770 | 6,525 | 44,719 | 1,659 | 8,189 | 267 | 8,945 | 19,060 | -57% |
| Franklin Financial Network, Inc. | Franklin | TN | Southeast | 659,540 | 10,261 | 9,123 | 823 | 149 | 20,356 | 30,338 | 23,453 | 4,127 | 1,016 | 58,934 | 190% |
| Sumner Bank & Trust | Gallatin | TN | Southeast | 179,080 | 12,075 | 15,701 | 43 | 694 | 28,512 | 6,942 | 17,282 | 85 | 311 | 24,620 | -14% |
| Carroll Financial Services, Inc. | Huntingdon | TN | Southeast | 253,162 | 7,921 | 34,549 | 4,141 | 14,441 | 61,052 | 13,368 | 43,102 | 8,412 | 17,053 | 81,935 | 34% |
| Moneytree Corporation | Lenoir City | TN | Southeast | 394,425 | 35,050 | 32,806 | 61 | 1,627 | 69,543 | 20,642 | 58,263 | - | 780 | 79,685 | 15% |
| Independent Holdings, Inc. | Memphis | TN | Southeast | 772,416 | 39,655 | 11,109 | - | 1,474 | 52,238 | 64,063 | 59,413 | - | 7,592 | 131,068 | 151% |
| Magna Bank | Memphis | TN | Southeast | 504,388 | 24,492 | 17,032 | - | - | 41,524 | 75,264 | 23,451 | 415 | - | 99,130 | 139% |
| Avenue Financial Holdings, Inc. | Nashville | TN | Southeast | 840,653 | 92,450 | 29,501 | - | - | 121,950 | 149,268 | 49,609 | - | 45 | 198,922 | 63% |
| InsCorp, Inc. | Nashville | TN | Southeast | 207,256 | 11,667 | 8,603 | - | 765 | 21,034 | 24,281 | 22,453 | - | 771 | 47,505 | 126% |
| SmartFinancial, Inc. | Pigeon Forge | TN | Southeast | 488,086 | 21,736 | 14,293 | - | 1,139 | 37,167 | 36,668 | 44,441 | - | 2,321 | 83,430 | 124% |
| Community First Bancshares, Inc. | Union City | TN | Southeast | 1,872,356 | 102,278 | 165,597 | 16,329 | 35,772 | 319,976 | 141,344 | 198,104 | 18,052 | 36,935 | 394,435 | 23% |
| Liberty Capital Bancshares, Inc. | Addison | TX | Southwest | 111,322 | 9,008 | 5,927 | - | 1,722 | 16,657 | 31,246 | 13,755 | - | - | 45,001 | 170% |
| Happy Bancshares, Inc. | Amarillo | TX | Southwest | 2,246,523 | 201,680 | 93,384 | 130,663 | 51,686 | 477,414 | 330,704 | 132,736 | 301,257 | 177,425 | 942,122 | 97% |
| Frontier Bancshares, Inc. | Austin | TX | Southwest | 404,173 | 25,056 | 29,742 | 851 | 6,814 | 62,462 | 64,852 | 103,606 | 370 | 6,144 | 174,972 | 180% |
| Southwestern Bancorp, Inc. | Boerne | TX | Southwest | 108,981 | 5,487 | 12,617 | 2,545 | 1,837 | 22,486 | 9,813 | 15,956 | 2,283 | 2,005 | 30,057 | 34% |
| BMC Bancshares, Inc. | Dallas | TX | Southwest | 63,253 | 765 | 2,514 | 825 | 223 | 4,326 | 1,246 | 15,192 | 20 | - | 16,458 | 280% |
| PlainsCapital Corporation | Dallas | TX | Southwest | 8,574,880 | 1,018,142 | 363,288 | 60,432 | 61,652 | 1,503,514 | 1,049,549 | 697,147 | 46,130 | 40,183 | 1,833,009 | 22% |
| Sovereign Bancshares, Inc. | Dallas | TX | Southwest | 1,083,289 | 196,282 | 22,060 | - | 918 | 219,260 | 277,110 | 79,869 | - | 5,734 | 362,713 | 65% |
| Veritex Holdings, Inc. | Dallas | TX | Southwest | 600,083 | 24,303 | 14,187 | - | 1,151 | 39,641 | 145,686 | 72,835 | 5 | 4,839 | 223,365 | 463% |
| Pioneer Bank, SSB | Drippings Springs | TX | Southwest | 251,380 | 7,439 | 8,987 | - | 1,142 | 17,568 | 26,481 | 26,196 | 2,402 | 7,102 | 62,181 | 254% |
| First Texas BHC, Inc. | Fort Worth | TX | Southwest | 1,194,262 | 85,806 | 17,371 | 110 | 2,229 | 159,515 | 207,939 | 122,249 | 361 | 13,078 | 343,627 | 115% |
| BOH Holdings, Inc. | Houston | TX | Southwest | 921,507 | 127,907 | 69,441 | - | - | 197,348 | 200,542 | 154,470 | - | 131 | 355,143 | 80% |
| Cadence Financial Corporation (Encore Bancshares, Inc.) | Houston | TX | Southwest | 6,209,375 | 390,730 | 469,509 | 9,668 | 19,435 | 889,341 | 2,325,166 | 279,303 | 1,784 | 27,299 | 2,633,552 | 196% |
| Third Coast Bank SSB | Humble | TX | Southwest | 274,540 | 33,954 | 30,443 | - | - | 64,397 | 89,750 | 57,995 | 234 | 2,560 | 150,539 | 134% |

| Institution | | | Region | Total Assets | Baseline Lending | | | | Baseline Business Lending | Q3 2013 | | | | Q3 2013 Business Lending | % Change over Baseline |
|--|----------------|-------|-----------|--------------|-------------------------|---------------------------------------|-------------------------|---------------------|---------------------------|-------------------------|---------------------------------------|-------------------------|---------------------|--------------------------|------------------------|
| Name | City | State | | | Commercial & Industrial | Owner-Occupied Commercial Real Estate | Agricultural Production | Secured by Farmland | | Commercial & Industrial | Owner-Occupied Commercial Real Estate | Agricultural Production | Secured by Farmland | | |
| Joaquin Bankshares Inc. | Huntington | TX | Southwest | 126,074 | 14,762 | 13,696 | 1,602 | 13,014 | 43,074 | 29,727 | 11,756 | 3,399 | 8,550 | 53,432 | 24% |
| AIM Bancshares, Inc. | Levelland | TX | Southwest | 434,468 | 39,299 | 14,585 | 13,262 | 6,874 | 74,020 | 117,403 | 41,087 | 23,198 | 20,886 | 202,574 | 174% |
| McLaughlin Bancshares, Inc. | Ralls | TX | Southwest | 240,853 | 18,912 | 4,166 | 29,426 | 3,706 | 56,210 | 34,266 | 14,069 | 32,406 | 7,057 | 87,798 | 56% |
| FB BanCorp | San Antonio | TX | Southwest | 620,877 | 99,765 | 2,480 | - | - | 102,244 | 56,780 | 2,129 | 65,675 | - | 124,584 | 22% |
| The ANB Corporation | Terrell | TX | Southwest | 2,311,790 | 142,877 | 265,405 | 6,732 | 22,473 | 437,487 | 116,243 | 420,428 | 5,047 | 12,739 | 554,457 | 27% |
| Steele Holdings, Inc. | Tyler | TX | Southwest | 266,133 | 14,649 | 15,060 | 427 | 1,007 | 31,142 | 31,322 | 27,707 | 222 | 989 | 60,240 | 93% |
| Cache Valley Banking Company | Logan | UT | Southwest | 682,623 | 33,786 | 39,918 | 9,516 | 16,242 | 99,462 | 57,947 | 112,024 | 20,667 | 29,094 | 219,732 | 121% |
| LCA Bank Corporation | Park City | UT | Southwest | 79,504 | 136 | - | - | - | 136 | 4,022 | - | - | - | 4,022 | 2868% |
| Medallion Bank | Salt Lake City | UT | Southwest | 804,690 | 234,859 | - | - | - | 234,859 | 404,249 | - | - | - | 404,249 | 72% |
| Virginia Heritage Bank | Fairfax | VA | Southeast | 835,206 | 39,167 | 50,228 | - | - | 89,395 | 45,884 | 120,971 | - | 88 | 166,943 | 87% |
| Blue Ridge Bankshares, Inc. | Luray | VA | Southeast | 211,242 | 4,225 | 15,593 | 159 | 2,442 | 22,419 | 11,030 | 13,217 | 102 | 6,690 | 31,039 | 38% |
| Heritage Bankshares, Inc. | Norfolk | VA | Southeast | 308,929 | 29,431 | 36,330 | - | - | 65,761 | 24,790 | 52,585 | - | - | 77,375 | 18% |
| WashingtonFirst Bankshares, Inc. | Reston | VA | Southeast | 1,122,900 | 60,171 | 13,644 | 117 | 3,240 | 77,172 | 119,099 | 150,425 | - | - | 269,524 | 249% |
| Xenith Bankshares, Inc. | Richmond | VA | Southeast | 604,482 | 14,641 | 19,095 | - | 593 | 34,328 | 146,503 | 55,065 | 61 | 1,676 | 203,305 | 492% |
| Citizens Community Bank | South Hill | VA | Southeast | 160,896 | 18,419 | 16,605 | 251 | 3,246 | 38,520 | 11,423 | 27,747 | 106 | 3,639 | 42,915 | 11% |
| TowneBank | Suffolk | VA | Southeast | 4,570,927 | 302,054 | 531,494 | 675 | 6,389 | 840,612 | 427,690 | 767,385 | 273 | 6,308 | 1,201,656 | 43% |
| United Financial Banking Companies, Inc. | Vienna | VA | Southeast | 326,888 | 17,679 | 59,243 | - | - | 76,922 | 24,964 | 63,684 | - | - | 88,648 | 15% |
| Puget Sound Bank | Bellevue | WA | West | 324,811 | 49,945 | 28,866 | - | - | 78,810 | 95,816 | 48,164 | - | 8,309 | 152,289 | 93% |
| U&I Financial Corp | Lynnwood | WA | West | 220,259 | 8,950 | 34,994 | - | - | 43,943 | 11,606 | 47,517 | - | - | 59,123 | 35% |
| W.T.B. Financial Corporation | Spokane | WA | West | 4,422,564 | 726,366 | 358,143 | 80,131 | 37,049 | 1,201,688 | 772,391 | 467,844 | 203,752 | 53,240 | 1,497,227 | 25% |
| Deerfield Financial Corporation | Deerfield | WI | Midwest | 111,005 | 15,306 | 116 | 4,065 | 1,820 | 21,306 | 10,096 | 9,477 | 2,686 | 5,292 | 27,551 | 29% |
| Nicolet Bankshares, Inc. | Green Bay | WI | Midwest | 1,121,026 | 129,397 | 137,477 | 41 | 2,935 | 269,850 | 227,376 | 203,715 | 14,071 | 37,738 | 482,900 | 79% |
| Sword Financial Corporation | Horicon | WI | Midwest | 540,708 | 63,172 | 127,299 | 10,132 | 21,004 | 221,607 | 69,564 | 119,794 | 21,606 | 54,889 | 265,853 | 20% |
| First American Investment, Inc. | Hudson | WI | Midwest | 94,846 | 4,014 | 15,043 | 163 | - | 19,220 | 7,601 | 21,182 | 27 | 1,797 | 30,607 | 59% |
| County Bancorp, Inc. | Manitowoc | WI | Midwest | 745,848 | 44,238 | 63,411 | 118,072 | 171,649 | 397,369 | 46,286 | 56,784 | 157,529 | 219,255 | 479,854 | 21% |
| Northern Bankshares, Inc. | McFarland | WI | Midwest | 408,456 | 26,290 | 62,897 | 1,313 | 15,949 | 106,449 | 35,475 | 114,255 | - | 5,335 | 155,065 | 46% |
| First Menasha Bancshares, Inc. | Neenah | WI | Midwest | 356,758 | 51,762 | 29,044 | 6 | 519 | 81,331 | 62,102 | 51,460 | - | 1,031 | 114,593 | 41% |
| PFSB Bancorporation, Inc. | Pigeon Falls | WI | Midwest | 72,673 | 3,710 | 8,995 | 6,075 | 11,414 | 30,194 | 3,576 | 8,075 | 11,755 | 19,328 | 42,734 | 42% |
| First Bank of Charleston | Charleston | WV | Southeast | 201,319 | 23,426 | 1,497 | - | - | 24,923 | 27,841 | 2,649 | - | - | 30,490 | 22% |
| MVB Financial Corp. | Fairmont | WV | Southeast | 837,316 | 15,650 | 38,312 | - | - | 53,962 | 54,670 | 91,703 | - | - | 146,373 | 171% |
| Financial Security Corporation | Basin | WY | West | 307,077 | 26,934 | 10,943 | 18,648 | 17,218 | 73,742 | 32,963 | 21,140 | 22,461 | 22,150 | 98,714 | 34% |