

Baltimore County **Recovery Plan**

State and Local Fiscal Recovery Funds 2022 Report

Baltimore County 2022 Recovery Plan

Contents

GENERAL OVERVIEW	2
Executive Summary.....	2
Uses of Funds	2
Promoting equitable outcomes	4
Community Engagement	5
Labor Practices.....	5
Use of Evidence.....	5
Performance Report	5
PROJECT INVENTORY	6

GENERAL OVERVIEW

Executive Summary

On March 11, 2021, the American Rescue Plan (ARP) Act was signed into law by the President. Title VI, Section 602 of the Social Security Act establishes the Coronavirus State Fiscal Recovery Fund, and section 603 establishes the Coronavirus State and Local Fiscal Recovery Fund (together, the Fiscal Recovery Funds). The Fiscal Recovery Funds are intended to provide support to State, local, and Tribal governments in responding to the impact of COVID-19 and in their efforts to contain COVID-19 on their communities, residents, and businesses. The Fiscal Recovery Funds expand the support provided to these governments over the last year, including through the Coronavirus Relief Fund (CRF). In general, this funding may be used to respond to the public health emergency with respect to COVID-19 or its negative economic impacts.

Baltimore County received \$80.3 million, half of its allotted \$160,706,923 directly from the US Treasury through the Coronavirus State and Local Fiscal Recovery Funds (SLFRF). The fund expenditures must be obligated during the period that begins on March 3, 2021, and ends on December 31, 2024, with all work completed and funding spent by December 31, 2026. Similar to our CARES funding expenditures, SLFRF will be used for a holistic, County-wide response and recovery effort. The current allotment will fund a County-wide grant program managed by the Office of Budget and Finance that will be serving its most impacted residents and businesses.

The County created an Economic Recovery Subcabinet, led by Director of Economic and Workforce Development Leonard Howie. Comprised of department and programmatic leaders across County government, the Subcabinet has been tasked with information gathering, examining nationwide best practices, and hosting listening forums with community stakeholders to develop recommendations on SLFRF spending. In addition to prioritizing communities that were disproportionately impacted by the COVID-19 pandemic, the Subcabinet is focused on integrating a data-driven approach.

The following report details Baltimore County's expenditures as of July 31, 2022. With continued public outreach and input on proposals and a prioritization of an equitable recovery plan, in addition to the evolving COVID-19 pandemic, the outlined uses of funds are expected to change and will be updated in next year's Performance Plan.

Uses of Funds

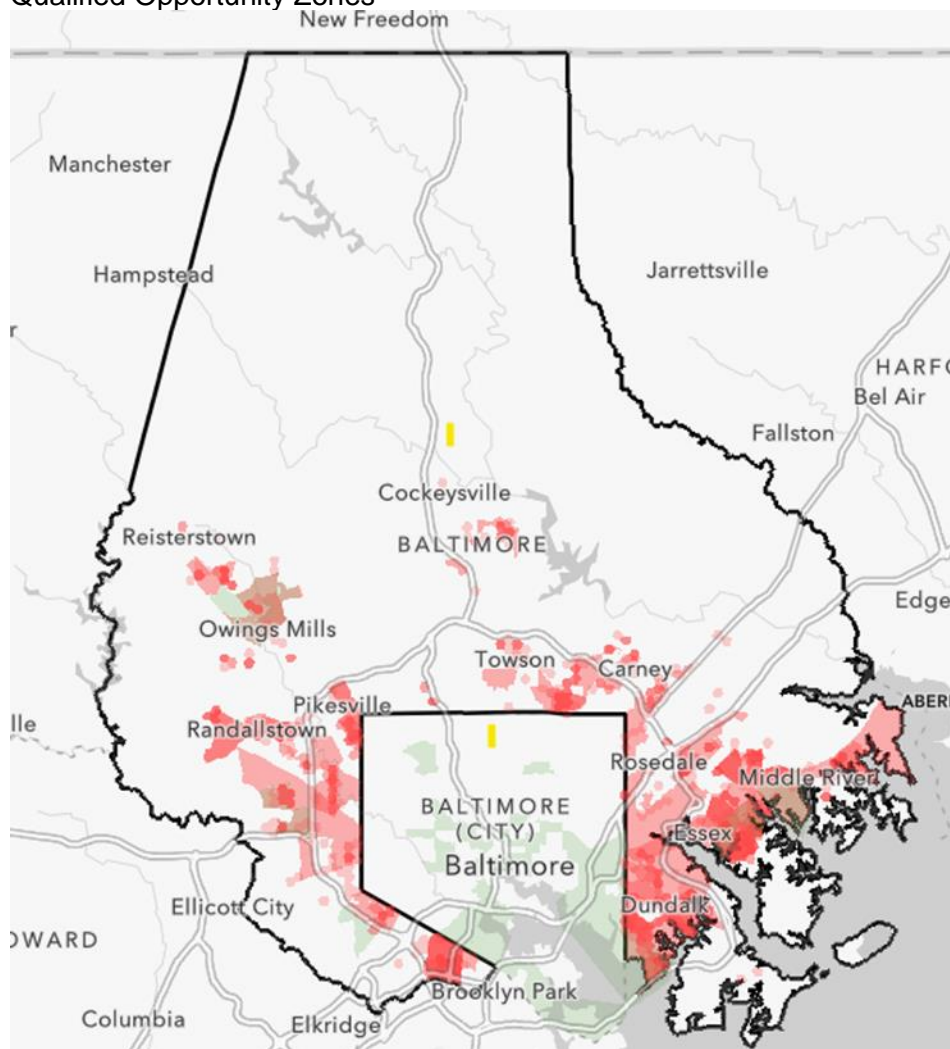
Baltimore County Executive Olszewski is committed to using federal pandemic funding to ensure an equitable recovery for all residents and businesses. In November 2021, County Executive Olszewski announced spending proposals for Baltimore County's allocation from the American Rescue Plan, which advance a broad range of innovative, equity-focused efforts in addition to ongoing pandemic-response needs:

- Approximately \$60 million in funds are proposed to be utilized to ensure an equitable recovery for all residents and businesses based on previous public input and the work of the County's Economic Recovery Subcabinet.

- \$80 million in funds will be utilized to support Baltimore County's ongoing public health response to the COVID-19 pandemic.
- The County has reserved approximately \$20 million in funds to be allocated based on future public input.'

The County is also targeting ARPA expenditures in critical impact areas, or regions within the County that have been disproportionately impacted by the COVID-19 pandemic. Using a combination of BCSTAT data and federal measures, Baltimore County has identified additional areas of disproportionate impact. This wider definition better reflects the needs of communities around the County. This map includes:

- Public Safety Hotspots
- Vulnerable Housing Areas
- Area Deprivation Index
- Social Vulnerability Index
- Low-Income Tax Credit Qualified Census Tracts
- Qualified Opportunity Zones



Promoting equitable outcomes

Baltimore County has over 850,000 residents-- the third largest population in Maryland. Nearly 30 percent of the County's population is African American, 100,000 residents are foreign-born, and students in the County's school system speak 97 different languages. From 2010 to 2020, the Hispanic or Latino population grew over 71.7%, 7.2% of residents. Nine percent of the County's households live below the federal poverty line, and 29 percent fall under the Asset Limited, Income Constrained, Employed (ALICE), threshold, according to the United Way. Given Baltimore County's diversity, ensuring that our SLFRF expenditures prioritize equitable outcomes is key to our overall recovery. The Economic Recovery Subcabinet will work in conjunction with community stakeholders to define the SLFRF equity goals and ultimately a County-wide equity framework. Using the data-based performance model already in place across County government, BCSTAT will support the Economic Recovery Subcabinet in ensuring that equity outcomes match Treasury guidance and demonstrate measurable impacts to the community.

The American Rescue Plan requires jurisdictions to target relief in line with Executive Order 13985, "Advancing Racial Equity and Support for Underserved Communities Through the Federal Government"¹, with Treasury making racial equity a central focus of ARPA spending.² The County must explain how ARPA funds were used to promote equitable growth and identify the historically underserved, marginalized, or adversely affected groups the projects intend to serve.

White House Definitions: (a) The term "equity" means the consistent and systematic fair, just, and impartial treatment of all individuals, including individuals who belong to underserved communities that have been denied such treatment, such as Black, Latino, and Indigenous and Native American persons, Asian Americans and Pacific Islanders and other persons of color; members of religious minorities; lesbian, gay, bisexual, transgender, and queer (LGBTQ+) persons; persons with disabilities; persons who live in rural areas; and persons otherwise adversely affected by persistent poverty or inequality. (b) The term "underserved communities" refers to populations sharing a particular characteristic, as well as geographic communities, that have been systematically denied a full opportunity to participate in aspects of economic, social, and civic life, as exemplified by the list in the preceding definition of "equity."

The implementation works closely with the project leads to ensure that every aspect of the projects properly addresses and promotes equitable outcomes. Each department must answer the following questions when soliciting approval to begin their ARPA projects:

1. Goals: Describe the specific historically underserved, marginalized, or adversely affected group(s) that will be impacted by this project.
2. Awareness: How will you ensure that all residents and businesses know about the ARPA project and services?
3. Access and Distribution: How will you ensure that program requirements, applications and paperwork do not create barriers for the target populations?
4. Outcomes: How will you research and develop project outcomes that focus on closing significant and persistent disparities between population groups; or ensuring that services are user-friendly, inclusive and accessible?

Additionally, Baltimore County is drafting a request for proposals to conduct an enterprise-wide equity assessment using ARPA funding. Equity has and continues to be a priority for the government, but the assessment will identify all strengths and weaknesses using qualitative and quantitative data.

Community Engagement

The Economic Recovery Subcabinet has engaged with many different community stakeholders throughout their internal planning process. With the expanded treasury guidance, the County is developing a multipronged community engagement plan to allow the general public to provide feedback and input on SLFRF spending proposals. A detailed outline will be published on the County website alongside community partner led outreach to ensure that all residents and stakeholders can participate. When possible, proposals will also prioritize building the capacity of our community partners who fill crucial gaps in supporting County residents.

To ensure community members could share their feedback, ideas, and priorities regarding the funding proposals, the Olszewski administration hosted two virtual public input meetings and developed an online survey. These recorded sessions, survey results and all information related to ARPA spending can be found on the public website:

<https://www.baltimorecountymd.gov/departments/budfin/american-rescue-plan/index.html>

Labor Practices

The Baltimore County Council approved prevailing wage legislation in 2020 for County contracts, a foundation that the County will follow if infrastructure projects are identified for SLFRF spending.

Use of Evidence

Baltimore County launched BCSTAT, the County's first data-driven performance management program, in 2019. Using evidence and data based systems for decision-making is well integrated throughout County government and SLFRF projects will follow this model while also following Treasury guidance. The County is continuing to evaluate each project and identify the best research and evidence to model our programs after. In the next report update, evidence-based support will be reflected widely throughout the project inventory.

Performance Report

Baltimore County is still in the early implementation stage of ARPA project design, including the development of robust performance measures. Where applicable, performance inputs, outputs and outcomes are being identified by the departments, BCSTAT and the implementation team. Since these are under development, there is limited data available to include in this report. However, over the next year the Baltimore County ARPA website will be expanded to include these critical project and performance updates.

PROJECT INVENTORY

Project ID 1002

Project Name COVID Testing

Funding amount: \$4,605,649.98

Project Expenditure Category: 1.2-COVID-19 Testing

Project Overview

- To prevent community spread of the Omicron variant the County purchased and distributed rapid tests to the public through testing sites and other outreach activities. The intended outcomes were to provide free COVID-19 at-home rapid tests to County residents and encourage isolation to lessen the community spread.

Use of Evidence

- Use of evidence was not a requirement for this category. However, the County's COVID-19 prevention and mitigation efforts were in line with all federal best practices and mirrored the federal government's at-home COVID-19 testing strategy.

Performance Report

Performance Measure	
Number of at-home COVID-19 tests distributed	75,000

Project ID 1003

Project Name Baltimore County Detention Center Enhanced COVID Prevention

Funding amount: \$173,193.87

Project Expenditure Category: 1.4-Prevention in Congregate Settings: Nursing Homes, Prisons, Jails, Dense Work Sites, Schools, Child care facilities, etc.

Project Overview

- To prevent community spread throughout the County's detention center, contracted services were provided to allow for physical distancing and improved sanitation. Contracted activities include: enhanced cleaning; prepared inmate meals; and inmate testing.

Use of Evidence

- Use of evidence was not a requirement for this category. However, the County's congregate setting COVID-19 prevention and mitigation efforts were in line with all federal best practices.

Performance Report

- The County has not assigned performance measures to this project.

Project ID 1005

Project Name Circuit Court Jury Social Distancing

Funding amount: \$ 360,690.82

Project Expenditure Category: 1.4-Prevention in Congregate Settings: Nursing Homes, Prisons, Jails, Dense Work Sites, Schools, Child care facilities, etc.

Project Overview

- To allow the Circuit Court to safely resume jury trials, contracted services were provided to allow for physical distancing and improved sanitation. Contracted activities include: jury office assistance and services to provide sufficient social distancing for congregate jury services; physical building modifications such as carpet and tile cleaning repair in the Circuit Court jury assembly room.

Use of Evidence

- Use of evidence was not a requirement for this category. However, the County's congregate setting COVID-19 prevention and mitigation efforts were in line with all federal best practices.

Performance Report

- The County has not assigned performance measures to this project.

Project ID 1006**Project Name Baltimore County Employee Vaccination Verification - OHR**

Funding amount: \$28,872.00

Project Expenditure Category: 1.7-Other COVID-19 Public Health Expenses including Communications Enforcement Isolation Quarantine

Project Overview

- From October 1, 2021 through February 2022, Baltimore County Government implemented a COVID-19 vaccine mandate and testing requirements for employees. This policy required the Office of Human Resources to verify County Employee vaccination statuses through purchased software.

Use of Evidence

- Use of evidence was not a requirement for this category. However, the County's congregate setting COVID-19 prevention and mitigation efforts were in line with all federal best practices.

Performance Report

- The County did not assign performance measures to this project.

Project ID: 1007**Project Name: Resident Hotel Isolations**

Funding amount: \$119,632.84

Project Expenditure Category: 1.7-Other COVID-19 Public Health Expenses including Communications Enforcement Isolation Quarantine

Project Overview

- To prevent community spread, the County contracted with several hotels to provide room for County residents who cannot safely socially distance.

Use of Evidence

- Use of evidence was not a requirement for this category. However, the County's COVID-19 prevention and mitigation efforts were in line with all federal best practices.

Performance Report

- The County did not assign performance measures to this project.

Project ID: 1009

Project Name: Mobile Crisis Team Expansion

Funding amount: \$ 30,006.22

Project Expenditure Category: 1.11-Community Violence Interventions

Project Overview

- The COVID-19 pandemic increased the number of residents experiencing mental, behavioral or emotional health crises. This funding supports the expansion of the County's Mobile Crisis Team dedicated to behavioral mental or emotional crisis response.

Use of Evidence

- The expansion of the MCT and the 9-1-1 Diversion programs are designed to connect consumers of behavioral health services with the most effective resources in times of need. Baseline call-for-service data was established prior to project initiation. The project will be evaluated by reviewing the rate of diversion of calls-for-service from patrol officers, both through the MCT program and the 9-1-1 program.

Performance Report

- As this project is in the early implementation stages, performance metrics are under development.

Project ID: 1010

Project Name: Personal Protective Equipment

Funding amount: \$ 35,998.00

Project Expenditure Category: 1.5-Personal Protective Equipment

Project Overview

- To prevent community spread, the County purchased PPE and distributed to residents.

Use of Evidence

- Use of evidence was not a requirement for this category. However, the County's COVID-19 prevention and mitigation efforts were in line with all federal best practices.

Performance Report

- The County did not assign performance measures to this project.

Project ID 2001**Project Name COVID-19 Legal Services for Eviction Prevention****Funding amount:** \$ 277,383**Project Expenditure Category:** 2.2-Household Assistance Rent Mortgage and Utility Aid**Project Overview**

- To support the County's ongoing eviction prevention programs, funding for contracted legal support has been provided. Many residents face a number of legal challenges in order to remain in their rental properties in addition to the financial support for rental arrears payments. Three non-profit legal services providers assist residents at no cost.

Use of Evidence

- Use of evidence was not a requirement for this category. However, providing legal support to residents facing eviction is supported by national best practices.

Performance Report

Performance Measure	
Number of closed cases	543

Project ID 2002**Project Name Comcast Internet Essentials****Funding amount:** \$680,216.23**Project Expenditure Category:** 2.4-Household Assistance Internet Access Programs**Project Overview**

- To expand internet access, the County, in partnership with Comcast Internet Essentials, is sponsoring qualifying households with free broadband service.
- Comcast offers low-cost (\$9.95 a month) high-speed (50/5Mbps) and reliable Internet at home. This service is generally available if you qualify for programs like the National School Lunch Program, SNAP, housing assistance, Medicaid and others.

Use of Evidence

- Use of evidence was not a requirement for this category. However, providing complimentary internet service is supported by national best practices.

Performance Report

Performance Measure	
Number of households sponsored	15,000

Project ID: 2003**Project Name: Food Distribution****Funding amount:** \$ 545,140.29**Project Expenditure Category:** 2.1-Household Assistance Food Programs**Project Overview**

- The COVID-19 pandemic increased food insecurity throughout the County. From the beginning of the pandemic, the County has been providing thousands of meals on a weekly basis at no charge to residents. As other federal pandemic-related funding sources sunset, the County is continuing to support local nonprofits and food drives through ARPA funding,

Use of Evidence

- Use of evidence was not a requirement for this category. However, food distribution programs are supported by national best practices.

Performance Report

- As this project recently shifted from other federal funding to ARPA funding, performance metrics are under development.

Project ID: 3001

Project Name: Payroll Costs for Staff Responding to COVID-19

Funding amount: \$ 7,619,453.27

Project Expenditure Category: 3.1-Public Sector Workforce Payroll and Benefits for Public Health Public Safety or Human Services Workers

Project Overview

- This project includes labor costs for payroll and covered benefits expenses for public safety, public health, health care, human services, and similar employees, to the extent that their services are devoted to mitigating or responding to COVID-19. Baltimore County considers public health/safety employees to be entirely devoted to mitigating/responding to COVID-19, and are fully recovered, if the employee, or his/her operating unit or division, is primarily dedicated to responding to the COVID-19 public health emergency.

Use of Evidence

- Use of evidence was not a requirement for this category.

Performance Report

- The County did not assign performance measures to this project.

Project ID: 3002

Project Name: Baltimore County Government Operations Infrastructure

Funding amount: \$ 466,590.8

Project Expenditure Category: 3.4-Public Sector Capacity Effective Service Delivery

Project Overview

- This project includes technology infrastructure, staffing, consulting and other capacity building resources to support delivery of government programs and services using data and evidence.

Use of Evidence

- Use of evidence was not a requirement for this category.

Performance Report

- The County did not assign performance measures to this project.

Project ID: 3003

Project Name: Baltimore County Government Administration

Funding amount: \$ 521,497.33

Project Expenditure Category: 3.5-Public Sector Capacity Administrative Needs

Project Overview

- To address administrative needs caused or exacerbated by the pandemic including addressing backlogs.

Use of Evidence

- Use of evidence was not a requirement for this category.

Performance Report

- The County did not assign performance measures to this project.

Project ID: 4001

Project Name: Baltimore County Government Premium Pay

Funding amount: \$ 17,455,217.45

Project Expenditure Category: 4.1-Public Sector Employees

Project Overview

- To On April 16, 2021 the County Executive announced that most County employees would be receiving a one-time premium pay in the amount of \$1,000, while public safety and public health employees would receive \$3,000 during the month of July 2021. Recognizing the heightened risk faced by Police, Fire, EMS, Corrections, 911, and Sheriff's Office employees, as well as health and human service workers, these departments received the higher allotment. Premium pay covered by SLFRF funding was only eligible for those County employees reporting to work in person, however, those employees that were on a telework arrangement were eligible for a bonus paid for by County General Funds.
- Sections 602(c)(1) and 603(c)(1) of the American Rescue Plan Act of 2021 provide that funds may be used "to respond to workers performing essential work during the COVID-19 public health emergency by providing premium pay to eligible workers." Sections 602(g)(2) and 603(g)(2) define eligible worker to mean "those workers needed to maintain continuity of operations of essential critical infrastructure sectors and additional sectors as each Governor of a State or territory, or each Tribal government, may designate as critical to protect the health and well-being of the residents of their State, territory, or Tribal government." 602(g)(2) and 603(g)(2), state that "the chief executive of each recipient has discretion to add additional sectors to this list, so long as additional sectors are deemed critical to protect the health and well-being of residents." As such, since County government, including all executive, judicial and legislative functions, continued and will continue throughout the COVID-19 pandemic and in light of the new Delta variant and increase in positivity rate to 5 percent in Baltimore County, County services have and will remain uninterrupted. As a result, the Baltimore County Executive

determined most County employees eligible for either the \$3,000 or \$1,000, excluding elected officials.

Use of Evidence

- Use of evidence was not a requirement for this category.

Performance Report

- The expenditures from the one-time Premium Pay program from SLFRF funding totaled \$17.7 million. Premium pay went to approximately 33 percent of staff who identify as non-white. The premium pay allotment contributed to a 14 percent increase in the number of employees whose total pay fell above \$93,765 (150 percent of the Baltimore County Average Annual Wage for all occupations). Considering the impact through an equitable framework, employees of color and female employees each comprised 22 percent of those who benefited from the premium pay bonus increasing their total pay above the \$93,765 threshold. Considering the “public health/safety vs regular premium pay” differential, the impact was greater for public health/safety employees with this group experiencing a 13.54 percent increase in the percentage who fell above the \$93,765 threshold for their total pay (compared to 6.05 percent increase for those in the “other” category).

Project ID: 5001

Project Name: Operation ReTree

Funding amount: \$ 113,489.96

Project Expenditure Category: 5.6-Clean Water Stormwater

Project Overview

- Operation ReTree was created by the Baltimore County Department of Environmental Protection and Sustainability (DEPS) in 2021 as a systematic approach to ensure that trees are planted in densely-populated communities with lower average incomes and insufficient tree canopy. Trees are critical community infrastructure that improve air quality, support people’s health, and deliver long-term benefits to neighborhoods. Therefore, planting significant numbers of trees in targeted communities over time should improve health conditions, reduce heat island effects, increase property values, lower the cost to cool homes and help alleviate flooding and reduce greenhouse gasses. The project goal is to plant at least 900 trees per calendar year through the spring of 2024.

Use of Evidence

- Use of evidence was not a requirement for this category.

Performance Report

- As this project is in the early implementation stages, performance metrics are under development.

Project ID: 6001

Project Name: Revenue Replacement

Funding amount: \$ 876,594.02

Project Expenditure Category: 6.1-Provision of Government Services

Project Overview

- Spend to date of the County's \$10,000,000 revenue loss election.