

City of Columbus
Recovery Plan

State and Local Fiscal Recovery Funds
2022 Report

City of Columbus
2022 Recovery Plan

Table of Contents

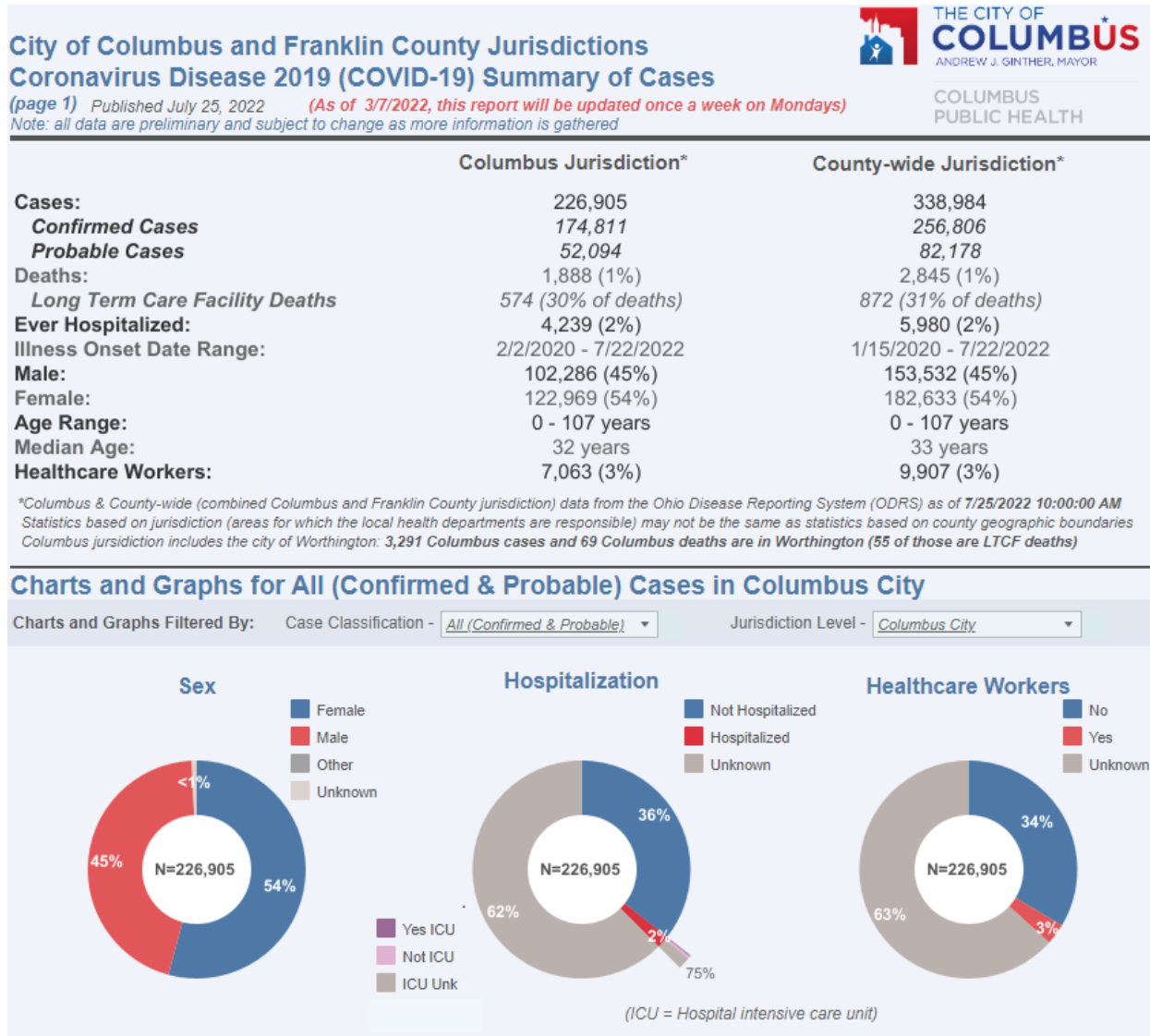
General Overview	2
Executive Summary	2
Uses of Funds.....	4
Promoting Equitable Outcomes.....	4-5
Community Engagement.....	5
Labor Practices	6
Use of Evidence.....	6
Performance Report.....	6
 Project Inventory	 6-9
Example Project	6-9

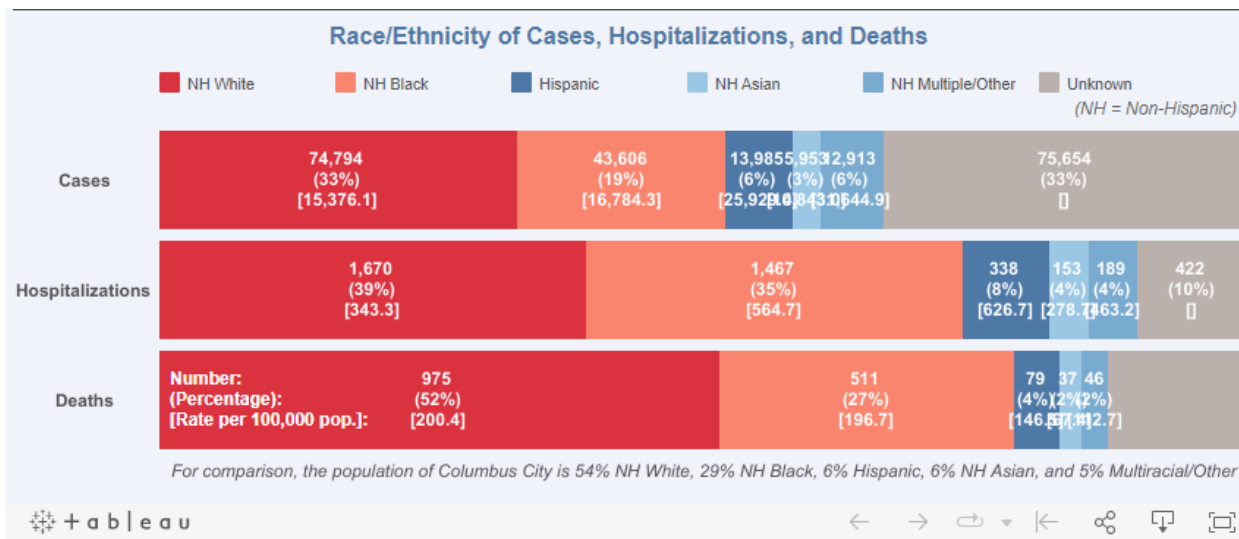
GENERAL OVERVIEW

Executive Summary

The Covid-19 Pandemic had and continues to have serious health, safety, economic, and behavioral health impacts on the City of Columbus and the greater Columbus community. It will certainly take years of careful research to fully understand the nature and extent of the pandemic's impact on our local economy. However, initial research indicates the following:

Coronavirus Disease 2019 (Covid-19) Summary of Cases





Impacts on Local Community

- It is estimated that Covid-19 displaced approximately 1 million Ohio workers.
- COVID-19 disproportionately forced low-paid Ohioans out of their jobs.
- People who hold “essential jobs” are at higher risk for COVID exposure; are more likely to be Black or brown; and are also paid nearly 13% less than those with nonessential jobs.
- A sampling of respondents residing in Franklin County show people in households below the Federal Poverty Level (FPL) and households that are ALICE: Asset Limited, Income Constrained, and Employed, experienced greater disparity during the pandemic in categories including employment, housing, finances, child care and technology
- When respondents were asked their biggest concerns, people living below the ALICE Threshold (households below the FPL and ALICE) identified contracting COVID-19 (31%), paying housing expenses (19%) and mental health (13%). Similarly, respondents above the ALICE Threshold revealed contracting COVID-19 (53%) and mental health (18%), but saw child care (10%) as a greater concern than paying housing expenses.

In response to these impacts, the City of Columbus launched a website (<https://www.columbus.gov/recovery/>) which provided resources to the community related to the American Rescue Plan, including a fact sheet and FAQ’s. This website also provided a portal for community members to submit funding requests to the City of Columbus. Additionally, the City of Columbus established a separate website which provided a range of health-specific data on the pandemic including vaccine awareness, Covid-19 testing, case tracking reports, and other various resources for businesses, healthcare providers, community services and organizations, and more. (<https://www.columbus.gov/publichealth/coronavirus-portal/>)

In an effort to target ARPA & ERAP funding to those most in need, the City established over-arching programs to organize efforts and track programmatic outcomes and expenditures. These programs are as follows:

- Administration
- Youth Programming
- Human Services
- Public Health Response
- Small Business Support
- Premium Pay
- Childcare Support
- Residential Utility Assistance
- Community Improvements

Uses of Funds

The City is continuing its effort to develop, refine, and finalize a comprehensive use strategy for its allocation of the State and Local Fiscal Recovery Fund (“SLFRF”). The strategy will continue to prioritize the needs of our community and provide for equitable impact and outcomes among residents and between neighborhoods.

At this preliminary stage, the current and planned expenditures in each expenditure category can be summarized as follows:

Project Name	Recipient Project ID	Total Obligations	Total Expenditures	Expenditure Category
Public Health Response	CW403	\$3,967,977.56	\$3,869,690.76	1-Public Health
ARP Administration	CW400	\$239,391.03	\$87,358.79	7-Administrative
Youth Programming	CW401	\$13,824,594.46	\$8,135,507.32	2-Negative Economic Impacts
Human Services	CW402	\$15,943,432.47	\$3,155,627.21	1-Public Health
Small Business Support	CW404	\$5,349,300.89	\$5,330,049.43	2-Negative Economic Impacts
Premium Pay	CW405	\$9,272,343.15	\$9,272,343.15	4-Premium Pay
Childcare Incentives	CW406	\$3,910,003.00	\$1,000,000.00	3-Public Health-Negative Economic Impact: Public Sector Capacity
Residential Utility Assistance	CW407	\$266,767.81	\$250,604.06	2-Negative Economic Impacts
TOTAL		\$52,773,810.37	\$31,101,180.72	

Promoting equitable outcomes

In 2022, Mayor Andrew Ginther announced the Opportunity Rising initiative. The goal/mission statement of Opportunity Rising is “Empowering Columbus residents to equitably prosper and grow through collaborative action to dismantle racism”. This program represents a comprehensive equity agenda which provides a lens through which all City of Columbus programming will be viewed. This initiative has and will continue to inform how the City invests ARPA and ERAP dollars in the community.

Opportunity Rising contains three foundational concepts:

- 1) Economic Stability
- 2) Health & Well-Being
- 3) Safe & Resilient Communities

These “Pillars” of the Opportunity Rising initiative represent desirable and achievable outcomes in the greater Columbus community. All City programs are to be viewed with an intent toward promoting any/all of these foundational outcomes.

In order to achieve these outcomes, the City of Columbus established a series of more tightly focused supportive initiatives (“Rays”). These Rays identify the aspirational objectives of the Equity Agenda. They are articulated as an aspiration for the entire community. By doing this, the City of Columbus seeks to elicit contrast between communities

that already meet the communitywide aspiration, and communities that do not. This thereby identifies inequities, so the City may disproportionality / equitably direct resources, investment and effort. They are areas of focus that are proven to have a strong, positive correlation with or direct causation on life expectancy, while also improving quality of life. These Ribbons can be measured and are crafted to be intersectional, intentionally crossing multiple strategic pillars and City departments. Furthermore, they require engagement from community partners to be fully realized. Below is an overview of the Rays along with descriptions and equity measures.

EQUITY AGENDA STRATEGIC FRAMEWORK									
Empowering Columbus residents to equitably prosper and grow through collaborative action to dismantle racism									
Ribbon	Community Aspiration	Sample Equity Measures			Pillars				
					Economic Stability	Health & Wellbeing	Safe & Resilient Communities		
Workforce Development	Every Columbus resident is prepared to enter and advance in the workforce	Unemployment rate	High school diploma/GED attainment	College degree attainment					
Jobs	Every resident earns a wage to support their household	Unemployment rate	Attainment of living wage- Food desserts and food access	Representative workforce at Columbus employers					
Business Climate	Every business has equal access to the resources and opportunities to succeed	Access to capital	Startup funding	Disparity study metrics/ ODI					
Mobility	Every resident lives within a 30 minute commute of work, education and healthcare	Commute time	Household expenditure on transportation	Transit use and other mobility options					
Financial Security	Every resident achieves and maintains financial security	Median household income 1.6 disparity ratio	Delinquent debt 2 disparity ratio	Zero net worth households 1.9 disparity ratio					
Childcare	Every family has access to high-quality, affordable childcare during the hours they need it	Childcare financial burden	Quality rating by neighborhood	Childcare-related job disruptions					
Kindergarten Preparedness	Every Columbus child is prepared to thrive in kindergarten	Kindergarten readiness 1.9 disparity ratio	Children in poverty	Children enrolled in preschool					
Digital Inclusion	Every resident can afford and use high-speed, high-capacity internet from home	In-home internet access	Device access	Digital literacy					
Housing Stability	No resident pays more than 30% of their monthly income to live in a neighborhood of their choice	50%+ income on rent	30%+ income on rent	Housing displacement					
Homelessness	Every resident is stably housed	Individuals and families in shelter	Length of stay in shelter	Progression from shelter to stable housing					
Infant Vitality	Every baby reaches his or her first birthday	Infant mortality 2.4 disparity ratio	Pre-term birth 1.1 disparity ratio	Very pre-term birth: 1.9 disparity ratio					
Chronic Disease Prevention	Healthy choices are easy for everyone to access and afford	Uninsured residents 1.5 disparity ratio	SNAP utilization 3.6 disparity ratio	Heart disease, diabetes, asthma					
Climate	Every resident enjoys the benefit of a sustainable environment	Tree canopy 2.7 disparity ratio	Asthma	EV adoption					
Behavioral Health & Trauma	Timely, affordable behavioral health services are available to every resident without stigma	Mental illness received care 1.5 disparity ratio	Substance abuse rates	Wait to see a provider/Screening/referrals					
Crisis Mitigation	Every call for help is served by the right response and use of force	Use of force	Officer-involved incidents	Resolution without police or fire					
Neighborhood Building	Every neighborhood has the infrastructure, greenspace and programs to support safe and healthy living	Fatal car crashes	Street lighting, sidewalks, greenspace, illegal dumping, 10 minute walk of greenspace	Private investment in neighborhood					
Violence Elimination	Every resident lives in a neighborhood free of violent crime	Homicide victims 4.02 disparity ratio- victims 5.3 disparity ratio- suspects	Solved cases	Murder, rape, robbery, aggravated assault					
Re-entry	Justice-involved residents are ready to contribute to and accepted by the community	Incarcerated individuals 3.5 disparity ratio	Restored citizens with W2	Utilization of record sealing					
Youth	Every Columbus young person can find safety and engagement in their neighborhood outside school hours	Youth employment	Extracurricular participation	Risk behaviors					
Community Collaboration	Residents collaborate with their city to create the community they wish to live in	Solved homicides	Right track/wrong track polling	Perceived safety / Language barriers					
Resiliency	Every resident has the resources to quickly recover from community crisis	FEMA vulnerability index	Participation in safety net programs	COVID/Flu vaccination rates					

Community Engagement

In 2021, shortly after the onset of the pandemic, the City of Columbus launched a public facing website/portal which provided information about the American Rescue Plan as well as soliciting funding proposals and expressions of interest from the general public. The City reviewed these funding proposals. In some cases, proposals were funded in full, some were funded in part, and all proposals were valuable resources used to inform the City on the needs of the community. In addition to the aforementioned portal, the City leveraged its strong network of community based partners and agencies. The ongoing dialogue and partnership with community agencies helped to inform the City regarding the needs of the larger community as well as providing a network for providing services to City residents. In addition to the aforementioned, the City provides opportunities for the general public to provide valued input at City Council Meetings and public hearings. These meetings and hearings were not necessarily exclusive to ARPA funding but were part of the City’s existing practice of providing a venue for community input and engagement.

Furthermore, City Departments have issued Request for Proposals via the City’s Vendor Services portal to solicit proposals for projects to benefit the City and its residents. Additionally, the City is refining a process to determine how to best invest ARP funding to meet the community’s near- and long-term needs, informed in part by the work of the joint City-County Recovery and Resiliency Committee. As stated previously, Community organizations seeking financial support for proposals utilizing American Recovery Plan funding have been encouraged to submit proposals online utilizing a standard form that includes a budget and description of how the funds will be used.

Labor Practices

The City is not currently pursuing any infrastructure projects using the SLFRF monies. Should that option be considered in the future, Columbus will engage strong labor standards to promote economic recovery through strong employment opportunities for workers. Furthermore, the City has existing standards/policies with respect to responsible wage, wage theft prevention, competitive procurement, supplier and workforce diversity & inclusion, and construction prequalification, which promote strong labor standards and such policies will be applied to applicable ARPA projects.

Use of Evidence

Evidence based interventions are currently being evaluated for inclusion in City programs moving forward. The programs which have been already funded through the SLFRF have not been largely designed to create an evidence building strategy.

Performance Report

The City is currently refining existing processes in an effort to collect performance indicators for each project. It is the intention of the City to begin reporting these performance indicators on a quarterly basis going forward.

PROJECT INVENTORY

Project Name	Recipient Project ID	Total Obligations	Total Expenditures	Expenditure Category	Project Overview	Use of Evidence	Performance Report
Public Health Response	CW403	\$3,967,977.56	\$3,869,690.76	1-Public Health	Public Health Response encompasses the response by the City to address the Covid-19 pandemic, including vaccination campaigns, contact tracing, Covid-19 Testing, and Vaccine Promotion	Evidence based interventions are currently being evaluated for inclusion in City programs moving forward. The programs which have been already funded through the SLFRF have not been designed to create an evidence building strategy.	The City is currently refining existing processes in an effort to collect performance indicators for each project. It is the intention of the City to begin reporting these performance indicators on a quarterly basis going forward.
ARP Administration	CW400	\$239,391.03	\$87,358.79	7- Administrative	Administration of ARPA program is intended to support the costs of administering the SLFRF grant funding, including grant management	Evidence based interventions are currently being evaluated for inclusion in City programs moving forward. The programs	The City is currently refining existing processes in an effort to collect performance indicators for each project. It is the

					technology, personnel, monitoring & support.	which have been already funded through the SLFRF have not been designed to create an evidence building strategy.	intention of the City to begin reporting these performance indicators on a quarterly basis going forward.
Youth Programming	CW401	\$13,824,594.46	\$8,135,507.32	2-Negative Economic Impacts	Youth programming is intended to support the development and expansion of youth programming offered by the City and its community partners.	Evidence based interventions are currently being evaluated for inclusion in City programs moving forward. The programs which have been already funded through the SLFRF have not been designed to create an evidence building strategy.	The City is currently refining existing processes in an effort to collect performance indicators for each project. It is the intention of the City to begin reporting these performance indicators on a quarterly basis going forward.
Human Services	CW402	\$15,943,432.47	\$3,155,627.21	1-Public Health	Human Services initiatives address negative economic impacts caused by the coronavirus public health emergency, including economic harms to low income workers and households, These initiatives involve providing immediate economic stabilization for households in Columbus and Franklin	Evidence based interventions are currently being evaluated for inclusion in City programs moving forward. The programs which have been already funded through the SLFRF have not been designed to create an evidence building strategy.	The City is currently refining existing processes in an effort to collect performance indicators for each project. It is the intention of the City to begin reporting these performance indicators on a quarterly basis going forward.

					county and addressing systemic public health and economic challenges that may have contributed to more severe impacts of the pandemic among low income communities and people of color		
Small Business Support	CW404	\$5,349,300.89	\$5,330,049.43	2-Negative Economic Impacts	Small business support is intended to provide financial support to small businesses who have been negatively impacted by the Covid-19 pandemic within our community.	Evidence based interventions are currently being evaluated for inclusion in City programs moving forward. The programs which have been already funded through the SLFRF have not been designed to create an evidence building strategy.	The City is currently refining existing processes in an effort to collect performance indicators for each project. It is the intention of the City to begin reporting these performance indicators on a quarterly basis going forward.
Premium Pay	CW405	\$9,272,343.15	\$9,272,343.15	4-Premium Pay	Premium pay supports compensation for public employees above and beyond their base pay, (including but not limited to) vaccine incentives for public employees.	Evidence based interventions are currently being evaluated for inclusion in City programs moving forward. The programs which have been already funded through the SLFRF have not been designed to create an evidence building strategy.	The City is currently refining existing processes in an effort to collect performance indicators for each project. It is the intention of the City to begin reporting these performance indicators on a quarterly basis going forward.

Childcare Incentives	CW406	\$3,910,003.00	\$1,000,000.00	3-Public Health-Negative Economic Impact: Public Sector Capacity	Childcare incentives is intended to support programs addressing health and development of our children and the needs our families by strengthening our child care industry that was devastated by the pandemic.	Evidence based interventions are currently being evaluated for inclusion in City programs moving forward. The programs which have been already funded through the SLFRF have not been designed to create an evidence building strategy.	The City is currently refining existing processes in an effort to collect performance indicators for each project. It is the intention of the City to begin reporting these performance indicators on a quarterly basis going forward.
Residential Utility Assistance	CW407	\$266,767.81	\$250,604.06	2-Negative Economic Impacts	Residential Utility Assistance is intended to provide utility aid to City residents who have experienced a negative economic impact as a result of the Covid-19 pandemic.	Evidence based interventions are currently being evaluated for inclusion in City programs moving forward. The programs which have been already funded through the SLFRF have not been designed to create an evidence building strategy.	The City is currently refining existing processes in an effort to collect performance indicators for each project. It is the intention of the City to begin reporting these performance indicators on a quarterly basis going forward.
TOTAL		\$52,773,810.37	\$31,101,180.72				