



Cumberland County

Recovery Plan

State & Local Fiscal Recovery Funds

July 01, 2023- June 30, 2024 Report

Maine
Cumberland **County**

Cumberland County
2024 Recovery Plan

Table of Contents

1.0 Notes.....2
1.1 Executive Summary 3
1.2 Uses of Funds 4
1.3 Promoting Equitable Outcomes 20
1.4 Community Engagement 23
1.5 Labor Practices 23
1.6 Use of Evidence 23
1.7 Performance Report..... 24

2.0 Project Inventory 25

1.0 Notes

The State and Local Fiscal Recovery Funds (SLFRF) are a key component of the American Rescue Plan Act (ARPA), enacted in March 2021. Cumberland County was provided a total of \$57,300,874 in SLFRF funding, offering substantial financial resources to aid in the response to the economic and public health impacts of the COVID-19 pandemic. Cumberland County uses a community-driven, data-informed process to ensure the effective, efficient, and equitable distribution of these federal funds.

The Recovery Plan Performance Report provides retrospective and prospective information to the Department of Treasury and public on projects that Cumberland County is undertaking, or planning to undertake with program funding and how Cumberland County is planning to ensure program outcomes are achieved in an effective, efficient, and equitable manner. This report addresses Cumberland County's use of these funds during the period from July 1, 2023 – June 30, 2024.

The County is provided minimum requirements for the Recovery Plan, and is encouraged to add information to the plan that we feel is appropriate to inform our constituents on efforts we are taking to respond to the pandemic and promote an equitable economic recovery.

1.1 Executive Summary

Nearly Four years after the start of the global pandemic, Cumberland County strategically built the internal infrastructure needed to implement State and Local Fiscal Recovery Funds (SLFRF) and has budgeted 100% of the \$57,300,874 award. Through investments appropriated by our County Commissioners and under County Managers' guidance, Cumberland County has directed these funds towards key transformational priorities. Cumberland County has diligently put its Recovery Plan into motion, implementing a wide range of programs and initiatives utilizing recovery funds to support the community and stimulate our economic recovery. These funds have been, and continue to be, instrumental in providing critical resources to combat the immediate health crisis, mitigate the economic impact, and promote an equitable recovery.

Retrospective Overview

This 2024 Annual Performance Report provides updates highlighting our spending commitments and initiatives. Additionally, we provide individual project highlights within each of the Treasury-designated expenditure categories. These highlights offer deeper insight and detail into how Cumberland County's internal departments and external agency partnerships have incorporated equity, leveraged community engagement, utilized evidence, and measured performance.

We believe these highlights display the excellent work Cumberland County and our partnering agencies are doing to leverage federal resources to support the strongest possible recovery for our region. We know our strongest possible recovery is one grounded in equity. That is why equity remains at the center of our implementation of SLFRF-funded projects and programs.

Jurisdictions Plan & Key Outcome Goal

The Mission of Cumberland County State and Local Fiscal Recovery Funds (SLFRF) is to expand resources for those impacted by the Coronavirus pandemic, with a goal to “help turn the tide on the pandemic, address its economic fallout, and lay the foundation for a strong and equitable recovery.” A successful recovery program means the County will anticipate the needs and coordinate the efforts and resources necessary to create and maintain a supportive structure. Over the past year, Cumberland County has continued to use SLFRF Funds in the ways that align with existing strategies of:



Key Challenges

The ongoing chain disruptions to the construction and building industry has consistently increased construction cost incrementally over the last year. Overall, the County has seen construction costs balloon upward 25-60% higher than our 2021 estimated values for projects. As such, the County has maintained a contingency of funds to address ongoing increased costs for capital projects approved in the first round of funding. However, this possess another challenge as we enter into FY25 and the December 31, 2024 deadline for all project obligations.

Additionally, and as with all federal programs' challenges arise in a variety of ways from program complexity, project implementation, budgeting, changing guidelines, public and political pressures, long-term impact, and interagency coordination. Small County governments such as ourselves, which have only one SLFRF administrator whose role is to oversee all aspects of the program from implementation to closeout, are more likely to be adversely impacted by these challenges. To address these challenges the County has adopted the following strategies:

- Investing in training and education.
- Engaging in detailed strategic planning to prioritize projects and allocate funds effectively.
- Building Partnerships: Collaborating with local organizations, nonprofits, and other stakeholders to leverage additional resources and expertise.
- Transparency and Communication: Maintaining clear and open communication with the public and stakeholders about project goals, progress, and outcomes.
- Monitoring and Evaluation: Establishing robust systems for monitoring and evaluating the impact of funded projects to ensure they meet intended goals and provide long-term benefits.

By addressing these challenges proactively, the County can maximize the impact of SLFRF and contribute to a robust and equitable recovery. The County will continue to hold strategic planning meetings to tackle the construction cost increase and the obligation deadline.

1.2 Uses of Funds

Goals and Strategies of our Jurisdiction's SLFRF Program

Through Cumberland County investment, Recovery Funds are impacting residents' lives across the region. The County is addressing national issues through local investments in health and human services, workforce training, apprenticeship programs, infrastructure and housing affordability initiatives. To address the effects of the COVID-19 pandemic, Cumberland County is responding to critical resident needs and investing in foundational initiatives that will strengthen localities for generations.

Cumberland County's process for determining project selection took a multifaceted approach that overlapped with the County's comprehensive assessment of regional strategic and capital improvement plans developed by community leaders across the County. After this assessment, Cumberland County requested project ideas for the most urgent and high-priority items that fell under eligible categories for ARPA-SLFRF funding and aligned with the County's determined priorities.

The past year was also a year of strong implementation of previously appropriated funds. For Example, the County moved forward with the implementation of key transformative investments in the following areas:



Summary of Cumberland County's Use of Funds

The following is a summary of Cumberland County's use of funds within each Expenditure Category and Subcategory. Project descriptions address how the use of funds supports the overall strategy and goals in the respective category:

Public Health (EC 1)

The final rule from the Treasury outlines a comprehensive list of eligible uses for Public Health programs and services categorized as follows:

1. Covid-19 Mitigation & Prevention
2. Medical Expenses
3. Behavioral Health care
4. Preventing and Responding to violence

Public Health eligible uses are presumed to be reasonably proportional responses to the identified harm, unless a response is grossly disproportionate to the type or extent of harm experienced. It is important to note that capital expenditures are not considered "programs and services" and are not presumed to be reasonably proportional responses unless specified.

Under the Public Health Expenditure Category, Cumberland County Board of Commissioners over the 2021-2024 program years has approved funding for 15 projects totaling \$21,768,272.08, that align with one or more of the eligible uses outlined above. Programs and projects include a range of initiatives that span from capital improvements of County-owned facilities to treatment facilities for substance use.

COVID-19 Mitigation & Prevention (EC 1.1-1.10)

The final rule consolidates all COVID-19 mitigation and prevention programs and services under Public Health. It covers programs for small businesses, nonprofits, impacted industries, public facilities, and the general public. The Treasury assumes that these groups to have been affected by COVID-19 and are eligible for services to mitigate or prevent the virus's spread.

The rule emphasizes that COVID-19 mitigation and prevention programs and services (including capital projects) must align with CDC guidelines and recommendations. Programs or services that impose conditions on participation or acceptance that would undermine efforts to stop the spread of COVID-19, or that discourage compliance with CDC recommendations and guidelines, are not permissible uses of funds. This means recipients cannot use funds for any program that contradicts or undermines CDC practices for stopping the spread of COVID-19.

During the SLFRF performance reporting period for 2024, Cumberland County continued its ongoing support for COVID-19 mitigation & prevention. Though no new projects were added under this subcategory, funding for ongoing projects were increased to support the current construction market.

In keeping in line with the defined uses, Cumberland County continues to move forward with the installation and expansion of air-handling equipment and other facility investments that prevent infections, and expanding medical services and care for individuals in corrections custody. The COVID-19 pandemic not only caused a spike in patients with psychiatric comorbidities, but also an increase in the degree of physical health problems of this population. The County has experienced an increase in arrestees with serious alcohol and other substance use disorders. This change in health conditions requires increased healthcare monitoring, and treatment of patients engaged in detoxification protocols, etc. The County has supported medical care expenses within the County Jail that were in response to and are directly attributed to COVID-19 in the form of additional staffing expenses, quarantining, PPE costs, and regular COVID-19 testing. Over the course of this program year, the County continues its ongoing focus of spending on medical staffing expenses.

The County Commissioner's voted to increase Public Health mitigation funds to demonstrate their continued support for quarantining and treatment of COVID-19 at the County Jail. Since the beginning of the pandemic, it was abundantly clear that concrete settings such as County Jails would facilitate the rapid spread of the virus, putting incarcerated people and staff at serious risk. Throughout the pandemic, repeated outbreaks in and around local and regional correctional facilities have demonstrated that prisons and jails provide ideal conditions for viral spread.

As a consequence, inmates have been disproportionately affected by COVID-19. It should also be recognized that due to their close and regular interaction with inmates, corrections officers, healthcare professionals, and others working in jails also face an enhanced risk of infection. Undoubtedly, prisons and jails are high-risk environments for COVID-19 for those who live and work there. It is also important to note that in Maine, Black people constitute 2% of state residents, but 7% of people in jail and 9% of people in prison. Funding for the jail assists groups that have been and continue to be disproportionately impacted by the Pandemic.

The expansion of the medical wing and other investments at the jail will allow the County to mitigate viral spread and maintain health and safety. Other measures include, but are not limited to developing strategies for quarantine, such as physical distancing; wearing masks; and enhancing hygiene practices.

The measurable outcomes of the project will also have a lasting ripple effect for inmate healthcare and staff wellbeing. The completion of the medical wing expansion will afford the County the ability to isolate infectious patients better and faster, reducing the likelihood of community spread in the building. The

expanded medical wing will also better separate routine medical clinic care from patients with a communicable disease (e.g., COVID, influenza, etc.) who require medical monitoring.

SLFRF funds are also being used to provide support to the increased medical costs associated with the County Jail. From the beginning of the COVID-19 Pandemic, the County Jail saw a number of increased cases of COVID-19, which regarded much needed medical assistance. In order to meet the needs of the inmates, County needed to increase staffing time and costs associated with providing proper treatment to the inmates at the jail.

Community Violence Interventions (EC 1.11)

The COVID-19 pandemic exacerbated many social issues, including domestic violence. Lockdowns, social distancing measures, and economic strain have created conditions that can escalate tensions within households and limit avenues for seeking help or escape for victims. Addressing the increase in domestic violence during and ongoing from the pandemic requires a multifaceted approach, including increased support for victims.

To address these issues, County Commissioners in 2023 awarded SLFRF funding for the Survivor Fund as a catalyst and continuation of our existing partnership with Through These Doors. These funds will support Survivor's Safety Plan, a critical component to increasing the overall safety and well-being of those Cumberland County residents experiencing domestic violence. The funds are being used to meet individual, short-term needs that allow a survivor to move from a dependent relationship with a dangerous person to a life that is more self-reliant and better positioned for safety. The nexus between the pandemic and a disproportionate impact on these individuals is clear. Over the 2024 program year, the SLFRF funding has provided survivors of domestic violence the financial autonomy needed to relocate to a safer place or enhance security measures to keep families safe in their existing homes. Funds will continue for this program through September of 2024.

Behavioral Health (EC 1.12-1.13)

Cumberland County has allocated SLFRF towards an array of behavioral health care's services and programs that provide services for prevention, treatment, recovery and harm reduction for mental health, substance use and other behavioral health challenges caused by or exacerbated by the public health emergency.

Substance Use Disorder (SUD) and mental health affect people from all walks of life and all age groups. Maine's causes of the opioid epidemic are complex and multi-layered, with political, social, and economic origins. Cumberland County's epidemic is a dynamic issue that has evolved dramatically over time, both in terms of the number of victims experiencing fatal overdoses each year and the substances involved. Additionally, the bio-psycho-social-environmental circumstances that increase a person's risk of developing a substance use disorder have also changed.

Though Maine, particularly Cumberland County, leads in the number of people disproportionately affected by the opioid crisis, we are also taking the lead in responding to and reducing overdose mortality (Maine., n.d.).

The State of Maine has created an Opioid Response Strategic Action Plan, which focuses on five key areas: leadership, prevention, harm reduction, treatment, and recovery. The County has used SLFRF to provide funding to each of the five key areas, via the following projects featured through the different eligible use categories in this section of this report (CDC), 2022):

- Leadership & Harm Reduction- *Creation of the Cumberland County Public Health Department*
- Prevention – *Tri Town Behavioral Health Liaison*
- Treatment – *Milestones Recovery Center*
- Recovery – *Portland Recovery Center, and United recovery Fund.*

Over the past 10 years, behavioral health has been consistently identified as a priority concern by public health needs assessments completed in Cumberland County. Behavioral health problems among youth and adults alike have been exacerbated by the isolation, stress, and economic insecurity brought on by the COVID-19 pandemic. To address the increasing behavioral health needs of the community, the Community Police Liaison Program will be implemented in Falmouth, Yarmouth, and Cumberland police departments in partnership with Spurwink and the Cumberland County Public Health Department.

Through the Community Police Liaison Program, a liaison will partner with police departments and their communities to address behavioral health needs by utilizing evidence-based interventions. The liaison assists police by co-responding to behavioral health related calls and aiding with crisis intervention. Liaisons provide on-going support to identified individuals within the community and connect them with appropriate community resources to help address their needs. Additionally, the Liaison will provide law enforcement personnel with training on best practices when responding to behavioral health related calls and will provide behavioral health education to community members as requested by departments. These trainings are meant to increase knowledge and understanding of behavioral health and reduce the stigma surrounding behavioral health problems.

The primary goal of the program is to address unmet behavioral health, substance use disorder, and psychosocial needs that lead to involvement with the criminal justice system. It aims to address current involvement, divert future involvement, and prevent initial involvement. Over the current and next program year, Behavioral Health Liaisons will collaborate with law enforcement for co-response, crisis intervention, case follow-up, referrals, and connecting individuals to services. They will also engage in community outreach and relationship-building activities to enhance behavioral health, substance use awareness, and suicide prevention.

The objective is to reduce cases where law enforcement must exercise protective custody for mental health or substance use interventions, decrease calls requiring police response for these issues, and increase residents' access to appropriate behavioral health services.

Treatment: During the 2024 program year, Milestone Recovery by way of SLFRF funds entered into a new purchase contract of a 9,600 square-foot facility in Portland, closing on the sale in September 2023. After a bidding process, renovations began that December and were concluded in April 2024. The program was able to open its doors on May 13, 2024.

The new location exceeds many of our original expectations. Rather than the initially proposed increase in capacity of eight beds (50%), Milestone was able to expand by fourteen beds (87.5%) with the additional SLFRF funds. The building includes not only one additional dedicated room for group counseling sessions, but two, allowing us to enhance the variety and frequency of counseling groups and enrichment activities. While the previous facility had large bedrooms housing up to 5 people, the new facility comprises single and double

occupancy bedrooms (and one triple), thus increasing the ability to provide clients with privacy and individualized care.

Milestone's initially stated that the goals for the project were twofold: to realize a decrease in the number of clients leaving the program before completing treatment, and to increase the number of clients served by at least 50% in our first year of operations at the new facility. However, they are still in the initial ramp-up and training period in the new location, in the six weeks since moving to the new facility our completion rate has increased from 74.7% to 76.9% when compared to the prior six-month period. It is worth noting that this already constitutes a significant improvement over the 65.3% completion rate noted in our original application. As they continue to normalize operations and bring them to full capacity, Milestone is expected continued progressive improvement. As noted, Milestone is still ramping up to full capacity, but in its first six weeks, the average daily census in the unit has increased by 29.3% compared to the prior six-month period, leaving little doubt that by the end of our first year, they will have exceeded our goal of 50% increase.

Recovery has many different fascists and includes services for prevention and harm reduction. In keeping in line with this idea, Cumberland County allocated funding to support the transportation needs of individuals in early stages of recovery from substance use disorder, recently out of incarceration, and new Americans who were further displaced by COVID-19 when many of the existing social services were inaccessible or unavailable. Cumberland County through the Ride to Work program were able to remove the barrier of transportation to employment for 257 individuals facing re-entry to the workforce. Access to this resource has helped them achieve financial independence and economic viability.

Public Health Other (EC 1.14)

Cumberland County may use funds for assistance to businesses and nonprofits to implement COVID-19 mitigation strategies to be covered under Public Health, COVID-19 mitigation and prevention, to reflect the fact that this assistance responds to the public health impacts of the pandemic rather than the negative economic impacts to a small business, nonprofit, or impacted industry.

When providing COVID-19 mitigation and prevention services, the County can identify the impacted entity as small businesses, nonprofits, or businesses in an impacted industry in general without any further analysis of impacts of the pandemic on those entities and whether the service is responsive.

The dramatic increase in substance use disorder is attributed to pandemic-related suspension of community-based peer recovery groups, delays or barriers to accessing behavioral health services during the pandemic, and an overall deterioration of mental health due to prolonged isolation. In order to support these community needs and target the many ways treatment can be provided, Cumberland County continues to use SLFRF to support local non-profits who work in this field.

The Portland Recovery Community Center (PRCC) is one such nonprofit that has used SLFRF to support physical site changes that increase in-person recovery support and is one of Southern Maine's leading peer-to-peer recovery centers. PRCC provides a safe haven for vulnerable populations in recovery, including people who are unhoused and/or re-entering from correctional facilities, often serving as a bridge into safe housing. The need for services has not ended regardless of the status of COVID-19's active community spread.

By renovating interior spaces of the existing building, PRCC is better able to provide open space and air circulation for the safe gathering of members in group activities, including open spaces, widened entries, expanded exterior windows and increased ceiling heights. Additionally, PRCC has replaced the aging HVAC

and air circulation system with new units (3) with modern air filtration measures to better control air flow, decrease energy use, and effectively remove significant viral load. The impacts of the renovations have allowed the facility to expand from 900 members to over 2,500 in just the first year.

The County may also use funds to support capital expenditures that support an eligible COVID-19 public health response. Hunger is an everyday reality for too many Mainers. Because of the unprecedented impact of the COVID-19 pandemic and ongoing economic crisis, SLFRF will be used to address the ongoing, systemic public health impacts of food insecurity that have increased during the pandemic and disproportionately affected low-income communities and people of color, especially those experiencing homelessness.

Cumberland County has provided two million dollars toward the creation of the Preble Street Food Security Hub. Preble Street, a not-for-profit resource center based in Portland, is currently producing and distributing more food than ever before: more than 1 million meals each year. While the expansion of the Food Security Hub is underway, the Preble Street Food Programs team is able to make approximately 2,000 nutritious and delicious meals each day in the current space. Once the Food Security Hub is complete, the organization will be able to create up to 10,000 meals per day.

In support of the Court's need to upgrade the existing radio infrastructure, Cumberland County has expended funds towards the acquisition of emergency equipment. This will allow the necessary growth for the County while maintaining flexibility to respond to the needs of partnering Police, Fire, EMS and agencies alike.

The Town of Pownal received SLFRF funding for the Mallet Hall Communication Center Project. The project will provide technology infrastructure to improve access to and the user experience of government IT systems, as well as technology improvements to increase public access and delivery of government programs and services is to covid-19 mitigation and prevention through Public Communication efforts.

Negative Economic Impacts (EC 2)

As we enter into year four, the economic shock from the COVID-19 pandemic of 2020 is still impacting Maine. It is very likely these impacts will continue to be felt in the region for at least the next 10 years based on historical knowledge of how Maine's workforce fared during the Great Recession. The most severe impacts will fall on low-income and underserved communities where pre-existing disparities amplified the impact of the pandemic and where the most work remains to reach a full recovery.

Under the Negative Economic Impacts category, Cumberland County Board of Commissioners approved funding for 41 projects totaling \$16,299,790.36, that align with one or more of the eligible uses outlined above over the 2021-2024 program years. Programs and projects range from long-term affordable housing to educational services. The following outlines eligible uses for Negative Economic Impacts programs and services categorized as follows:

1. Household Assistance
2. Long-term housing security affordable housing
3. Long-term housing security: services for unhoused persons
4. Economic impact assistance: other
5. Addressing education disparities: academic, social, and emotional services.

Household Assistance (EC 2.1-2.8)

Programs and projects under the assistance to households are targeted towards “impacted” and “disproportionately impacted” classes: impacted classes experienced the general, broad-based impacts of the pandemic, while disproportionately impacted classes faced meaningfully more severe impacts, often due to preexisting disparities.

Cumberland County experiences harsh winters and the storms can bring high winds and subzero temperatures, especially overnight. While most Mainers are used to cold temperatures, a combination of extreme cold and powerful winds has potential to be dangerous, and have devastating impacts on our most vulnerable population.

Affordable home heat is a fundamental element of health, well-being, self-sufficiency, and economic mobility. Families struggling due to hardships caused by COVID-19 are at greater risk for energy insecurity. With more than 60 percent of Maine homes reliant on heating oil, compared to 4 percent nationally and between 24-42 percent elsewhere in New England, Maine is the most heating oil dependent state in the country.

The New England electrical grid, which supplies power to a majority of Maine, is over-reliant on natural gas-generated electricity. This makes Maine distinctly vulnerable to the increased prices and volatility the global fossil fuel market is now experiencing. Cumberland County recognized these factors directly contributed to a grim winter forecast for low-income families who face impossible choices among essential needs such as food, heat, and medicine.

To address these and other negative economic impacts of the pandemic to households in our community, Cumberland County created the Keeping Cumberland County Warm program. The program goal was to target community members just outside the income guidelines for LIHEAP and General Assistance. Income restrictions were followed under the SLFRF guidelines. Funding was filtered through local municipalities’ existing GA process. Minimum set-asides for towns were \$50,000.00.

To further assist households within Cumberland County and to address a community health priority area, Cumberland County has directed funds to support access to oral health care. Over the 2024 program year, Cumberland County’s partnership (outlined in last year’s report), with the Children’s Oral Health Network of Maine (COHN). COHN has begun implementation of its strategic plan for addressing the gaps in oral healthcare identified in the Cumberland County Community Health Improvement Plan. COHN is a small non-profit organization that unites organizations and individuals across the state with the shared vision of ensuring that all children in Maine can grow up free from preventable dental disease. The network drives collaboration and innovation in order to ensure effective prevention, education, and treatment tools reach all children in Maine. COHN is the only organization in Maine focused on creating a stronger preventative oral health infrastructure and has the expertise, strategic relationships, and technical skills for supporting the Cumberland County oral health infrastructure project.

Long-term Housing Security: Affordable Housing (EC 2.15)

In an effort to improve access to stable, affordable housing, Cumberland County has directed SLFRF funds towards interventions that increase the supply of affordable and high-quality living units, improve housing security, and support durable and sustainable homeownership.

As noted in prior annual recovery reports and cited in the State of Maine Housing Production Needs study released in October 2023 (Advisors, 2023), Cumberland County does not have enough homes to meet existing demand. The National Low Income Housing Coalition (NLIHC) has estimated a shortage of 22,300 affordable and available rental homes for households making at or below 50% of area median income (AMI), primarily affecting extremely low-income households.

While the State of Maine Housing Production Needs Study considers housing needs at the lowest income levels, it’s primary focus is on measuring overall production needs for both renters and homeowners across the income spectrum in Maine.

Table 1: Historic Underproduction and Future Need by Region

<i>Region</i>	<i>Historic Underproduction</i>	<i>Future Need (2021 - 2030)</i>	<i>Total</i>
<i>Coastal</i>	21,200	24,200 - 28,000	45,400 - 49,200
<i>Central Western</i>	13,000	9,700 - 11,700	22,700 - 24,700
<i>Northeastern</i>	4,300	4,000 - 6,100	8,300 - 10,400
<i>Maine</i>	38,500	37,900 - 45,800	76,400 - 84,300

Table 2: Annualized Production Needs Compared to Annual Building Permits by Region

	<i>Total Annual Production Need</i>	<i>5-year average (2016 - 2021)</i>	<i>% Change in Permits</i>	<i>Net Change in permits</i>
<i>Coastal</i>	5,100 - 5,500	3,400	50% - 62%	1,700 - 2,100
<i>Central Western</i>	2,500 - 2,700	1,000	150% - 170%	1,500 - 1,700
<i>Northeastern</i>	900 - 1,100	400	128% - 175%	510 - 700
<i>Maine</i>	8,500 - 9,300	4,800	77% - 94%	3,700 - 4,500

Cumberland County's investment of one-time funding towards the production of affordable long-term housing will support the creation of 293 new units of affordable rental housing and 26 new affordable homes.

Safe and affordable housing is critical to every other aspect of life, but it is not an easy or quick fix. During this reporting year, Cumberland County celebrated our efforts by welcoming the addition of 31 new affordable homes for older adults and the sale of two affordable homes.

Over this year and next, the County will continue to oversee and manage two affordable housing initiatives developed by County staff. The first initiative, Cumberland County Rural Affordable Rental Housing, is a partnership with Maine Housing. This is intended to assist developers in creating affordable, workforce rental housing consisting of five to 12 units where 100% of the units are leased to households making no more than 80% of Area Median Income and are leased at not more than 80% of Area Median Income rents.

The intent is to support development of new rental units throughout the County that are affordable. Another goal of the Affordable Rental Housing Program is to bring economic equity to the rural areas of Cumberland County, which are often left out of the Low-Income Housing Tax Credit program because the size, scale and lack of investor interest makes them all but unworkable. The Program will provide subsidy in the form of zero-interest forgivable loans, and pay debt for the acquisition and substantial rehabilitation or construction of any units developed under the Program. The affordability will be required for a minimum of 45 years.

The second initiative, Cumberland County Preservation of Affordable Housing Program will strengthen the local economy and support communities through acquisition of property in rural towns and preserving it for future development. The program will support family's ability to obtain, quality, affordable housing as well as preserve said housing.

It is important to note that both initiatives outlined above are at risk of having their funding reduced or reprogrammed. This risk is twofold. First, the County does not have a dedicated housing department, and despite our current collaboration with Maine Housing being very successful internally, it has not attracted developer interest externally. Second, the rising costs of internal projects, specifically construction, are forcing the County to make difficult decisions that may significantly reduce funding for these initiatives before the December 31, 2024 deadline.

Long-term Housing Security: Services for Unhoused Persons (EC 2.16)

Cumberland County continues to be Maine's epicenter for housing insecurity and homelessness, with a population that rose again this year. The County recognizes that homelessness is an issue across the region and must be addressed. Funds are being deployed to directly address the disproportionate impact of the pandemic and potential future public health crises on the highly vulnerable population of people experiencing homelessness and housing insecurity.

Funds have been invested into long-term housing supports, directing SLFRF toward the County's two largest shelter providers: Tedford Housing, and the City of Portland. Despite the City of Portland opening its new 250-bed facility in the Spring of 2023, there are still several overflow shelters and multiple homeless encampments throughout the region. Tedford Housing hopes to have its new shelter and non-congregate family shelter under construction this year. The County anticipates funding will create pathways for residents with the fewest resources and the greatest challenges to access critical services. Both shelter programs are designed to directly improve the physical, mental and social well-being of the most vulnerable of Cumberland County's residents.

During the 2024 program year the County hired consultant Jeff Levine of Levine Planning strategies to Evaluate the need and options for provision of programs and services for people experiencing or at imminent risk of homelessness in the greater Lakes Region, including the towns of Baldwin, Casco, Naples, Raymond, and Sebago. Currently, there are no defined programs or services located within the Lakes Region to aid and support people experiencing homelessness with securing emergency or permanent housing, or to assist those at risk of housing insecurity with successfully maintaining permanent housing. The final report is set to be completed by September of 2024. The County is hoping to use SLFRF funds to support recommendations of the study, again only if efforts can meet the December 31, 2024 Deadline set by treasury.

Economic Impact Assistance: Other (EC 2.37)

Through our Cumberland County Public Health Department, we established partnerships with community-based organizations and directed SLFRFs to support members of our community disproportionately impacted by the pandemic. While these programs have now ended, they provided essential services, particularly to those in emergency shelters, including transportation for medical, emotional, and social support needs. The funds also supported necessary supplies to keep children safe and healthy, as well as volunteer and donation management to address other gaps in basic needs.

Addressing Educational Disparities: Academic, Social, and Emotional Services (EC2.25)

The COVID-19 pandemic exacerbated issues already present in our community, specifically a widening academic achievement gap in core subjects like reading and math. Poor access to quality learning opportunities and high cost of affordable enrichment programs contribute to the widening academic achievement gap. To address education gaps, Cumberland County collaborated with Portland Adult Education and The Boys and Girls Club of greater Portland to address education disparities in our region.

Cumberland County collaborated with the Boys and Girls Club of Southern Maine over the past program year to support evidence-based learning recovery efforts for youth ages 6-18 in our region. For more than 110 years, Boys & Girls Clubs of Southern Maine (BGCSM) have provided young people with a safe place to go after school and positive experiences to help them grow and thrive. BGCSM's four priority outcome areas for programming are academic success, leadership, the arts, and health & wellness. These building blocks for a productive life are built into BGCSM's delivery model. Programs and activities are tailored by age group. Each Clubhouse offers practical help and mentoring for college/career planning, daily academic support to build on school day lessons, and enriching literacy and STEM opportunities.

The goal of BGCSM programming is to guide and support our members' social-emotional development, teach interpersonal and life skills, and promote academic success by encouraging good study habits, goalsetting, and good communication. BGCSM uses an integrated approach that provides diverse daily program experiences using national evidence-based curricula and locally developed initiatives. BGCSM's goal is to ensure that every child who enters their Clubs graduates high school on time and leaves with a solid plan for their future. In providing support to the Learning Recovery program, Cumberland County has assisted BGSM's to accomplish the goals outlined by the program. SLFRF will have a ripple effect on our region.

The demand for academic instruction is increasing beyond the local capacity of programs who are often staffed with part-time hourly teachers. Over the last four years, the Cumberland County Adult Education Career Hub has seen an increase in the number of students who are not finishing high school. Many of these students left due to extreme gaps in their education, having struggled to succeed in the pandemic-era environment. In addition to those who do not finish high school, there are young adults who graduate from high school academically unprepared to enter workforce-training programs offered by the adult education programs in Cumberland County and/or at the local community colleges.

With additional academic preparation tailored for English for Speakers of Other Languages students and young adults, a larger number of individuals who were disproportionately affected by COVID-19 have been able to qualify for and enroll in various workforce training programs and academic skill-building classes offered by adult education programs throughout Cumberland County.

Over the last several years, Cumberland County has provided Portland Adult Education Hub with technical assistance. In doing so, the County identified risk factors that lead them to the decision to not extend the grant term beyond the 2024 program year. The County's determination was reached after identifying a history of unsatisfactory performance over the last 18 months, which includes untimely, inadequate, and or inaccurate financial and/or programmatic reports. Portland Adult Education demonstrated poor management systems and an inability to meet management standards, based on a performance history characterized by high turnover, which led to the significant gaps in both performance and financial reporting. The project was able to achieve accomplishment goals but not to the extent that was outlined within the original grant application.

Public Health-Negative Economic Impact: Public Sector Capacity (EC 3)

With the increased flexibility of the final rule, SLFRF funding to restore and bolster public sector capacity, which supports government’s ability to deliver critical COVID-19 services. There are three main categories of eligible uses to bolster public sector capacity and workforce: Public Safety, Public Health, and Human Services Staff; Government Employment and Rehiring Public Sector Staff; and Effective Service Delivery.

SLFRF funds also may be used to provide worker retention incentives, including reasonable increases in compensation to persuade employees to remain with the employer as compared to other employment options. Cumberland County is using SLFRF to address retention and hiring. The Final Rule provides recipients with two options for restoring pre-pandemic employment. Under the first and more straightforward option, recipients may use SLFRF funds to rehire staff for pre-pandemic positions that were unfilled or eliminated due to the pandemic without further analysis. Under the second option, the Final Rule provides recipients an option to hire above the pre-pandemic baseline by adjusting the pre-pandemic baseline for historical growth in public sector employment over time and flexibility on roles for hire. Recipients may choose between these options but cannot use both. The following outlines eligible uses for Public Health-Economic Impacts programs and services categorized as follows:

1. Public Health- Negative Economic Impact: Public Sector Capacity
2. Public Sector Workforce: Payroll and Benefits for Public Health

As previously reported, Cumberland County’s initial efforts to support hiring above the pre-pandemic baseline included creating a new recruitment position. The Recruiter’s focus for the County has been on updating and modernizing the current recruitment efforts, application processes, candidate sourcing methods, social media platforms, hiring practices, and retention incentives. Cumberland County took the following approach during this program year:



Over the 2023-2024 program year, the Cumberland County recruiter faced significant hiring challenges and trends, including declining interest in public safety jobs, pandemic-driven changes in the career landscape, and a hyper-competitive market for qualified staff. These challenges included an extended hiring process for public safety roles, pay disparity compared to lower-stress private-sector jobs, and a benefits and compensation structure that was not keeping up with the competition.

Adjustments to the process. Structural changes were made to the recruiting process and staff. This included hiring a full-time recruiter, implementing an MOA with union leadership for a part-time

corrections officer to assist with recruitment, creating centralized recruiting and hiring functions within the Human Resources office, streamlining all hiring processes, and adding a second Occupational Health provider to expedite post-offer physicals.

Modernized benefits and work environment. Cumberland County is committed to providing a modernized benefits package and fostering a supportive work environment. Our goal is to ensure that employees have access to the resources they need to thrive both professionally and personally, with comprehensive benefits and a workplace culture that values innovation, flexibility, and well-being. The County has taken steps to incentivize employment and retention, which include implementing alternative schedules for non-union employees, allowing partial work from home options and 4-day workweek schedules. The County conducted a market compensation study to address potential competitive gaps for benchmark jobs, updated base salary structure to annually recognize longevity, and an enhanced lateral hiring scale that recognizes previous service. Additional work includes Diversity, Equity and Inclusion training.

Advancing recruitment tools meant establishing and building on technology infrastructure. Cumberland County completed its first full calendar year using the applicant tracking system (ATS), JazzHR. The ATS has revolutionized how Cumberland County does recruiting. This allows the County to post and advertise jobs, collect applications, communicate with candidates, set up and record interviews, make offers, and collect documents required for pre-employment all on one platform.

In keeping with the trend of modernizing recruiting efforts, we also strengthened Cumberland County's presence in the digital realm, where the vast majority of people go when seeking employment. Cumberland County was consistently represented on social media, radio, and online job boards in 2023. JazzHR helps with this effort, posting open positions to dozens of job recruiting sites. Unfortunately, since most employers are seeking to fill vacant positions, our postings are typically pushed to the bottom of listings within hours, if not minutes, of going live. To combat this trend, Cumberland County made the investment with a JazzHR integration, Job Target's Programmatic advertising. This tool uses an algorithm to determine which job boards are producing the most applicants and it keeps selected Cumberland County jobs front and center on those sites.

As a result, Job Target, Indeed, and Zip Recruiter are the largest candidate sources. However, while there are sources that produce more applications, the applicant source providing candidates that most consistently advance in the hiring process are referrals. Thus, in July of 2023 Cumberland County invested in increasing the referral bonus for current employees. The referral bonus is position specific, but goes as high as \$2,500 for employees who successfully refer a candidate to corrections officer.

In this hiring market, which isn't expected to improve anytime soon, we also need to incorporate outbound recruitment. Areas of focus include attending career fairs and making connections at local high schools with state sponsored Extended Learning Opportunity (ELO) coordinators. Job Target provides a "Source" feature that allows the recruiter to contact individuals who list their resumes on sites such as LinkedIn and Indeed to make them aware of job openings that match their qualifications. Cumberland County partnered with a non-profit, Boots2Roots to gain access to their network of job seekers, and has consistent communication with our area's Army Reserve Employment Specialist with the National Guard.

To close out the County recruiter efforts, throughout this program year Cumberland County opened 48 jobs and received 2,220 applications. Of those applications, 1,166 applicants advanced (meaning they were sent a questionnaire, had a phone screen, and were sent an invitation to interview or any other number of reach outs depending on the established process). From there, approximately 382 interviews were conducted from there, 276 offers of employment were made to selected candidates, resulting in 87 new hires.

Under this category, the County provided funding to support jail-staffing efforts that include worker retention incentives, and reasonable increases in compensation to persuade employees to remain with the County.

Public Sector Workforce: Payroll and Benefits for Public Health (EC3.1)

SLFRF funding may be used for payroll and covered benefits for public safety, public health, health care, human services and similar employees of a recipient government, for the portion of the employee's time spent responding to COVID-19.

With the flexibility of the SLFRF program and the clear need that emerged from the COVID-19 pandemic, Cumberland County used the funds as a catalyst to establish a County Public Health Department and brought the community's strong desire for regional public health programming to reality.

Over the program year, the County Public Health department has continued to establish and implement the fundamental goals of the new Public Health Department. Those goals are to address persistent or remaining gaps in public health, to create stronger partnerships and collaborations, and to build capacity within the County to address the needs of people and communities who have the greatest barriers to health and well-being. While Cumberland County as a whole has some of the lowest rates of disease and highest rates of health, these overall rates skew the health inequities that continue to exist.

Over the performance period, the Behavioral Public Health Manager continued their work to build upon current efforts to improve coordination and increase resources within the County to reduce behavioral health related deaths, such as overdose and suicide. SLFRF will support this position for the first 18 months. The position has taken on the existing behavioral health-related projects that were managed by the Public Health Director and has built upon those efforts to improve coordination and increase resources within the County.

Premium Pay (EC 4)

N/A

Water, sewer, and broadband infrastructure (EC 5)

Water and sewer infrastructure investments marked one of the six ways that funds could be used for recovery and to address climate change impacts. Guidance from the U.S. Department of the Treasury identified drinking water infrastructure projects as eligible if they met the U.S. Environmental Protection Agency’s (EPA) Drinking Water State Revolving Fund (DWSRF) eligibility criteria. All projects must be deemed necessary investments. Necessary Investments are defined by Treasury to be:

- Responsive to an identified need to achieve or maintain an adequate minimum level of service, which may include a reasonable projection of increased need, whether due to population growth or otherwise,
- A cost-effective means for meeting that need, considering available alternatives, and
- For investments in infrastructure that supply drinking water in order to meet projected population growth, projected to be sustainable over its estimated useful life.

Water infrastructure is the backbone of our lives and livelihoods. From turning on the tap in the morning to take a shower, to preparing the food we eat, to the proper drainage of our roads, to having sufficient clean water and wastewater treatment capacity to support business and industry water infrastructure touches every facet. The challenge is, water infrastructure is often out of sight and therefore out of mind. As a result, the pace of investment in these assets has not kept up with the need.

In the fall of 2022, the Cumberland County Commissioners established the Municipal Sewer and Water Grant Program, which aims to support local sewer and water infrastructure needs by awarding funds directly to municipalities for approved projects. The goal for the program is to support and prioritize projects that would provide the greatest public benefit to our community. Cumberland County has awarded funds to four projects under this program.

Though all of these projects are infrastructure in nature, The County must also view projects with an equity lens and keep in line with the Executive Order 13985, “Advancing Racial Equity and Support for Underserved Communities through the Federal Government.”

The ARPA Advisory Committee holds in regard the spirit of the ARPA funding when selecting projects to be awarded funding. The following outlines eligible uses for water, sewer and broadband infrastructure programs and services categorized as follows:

1. Centralized water treatment
2. Clean water: other sewer infrastructure
3. Transmission and distribution

Centralized Wastewater Treatment 5.1

Centralized wastewater treatment projects typically involve the construction, expansion, or improvement of facilities that treat wastewater from multiple sources within a community or region. These projects are essential for managing and treating wastewater to protect public health and the environment.

The County has awarded \$450,000.00 to the Town of Bridgton’s Sewer Main Extensions Project. The Town of Bridgton requested funding to support the Sewer Main Extensions Project, which is ancillary to the

Wastewater Treatment Facility (WWTF) and Collection System project currently under construction in Town. The Town of Bridgton is expanding the public wastewater system to not only remediate environmental impacts of failing-septic systems on their watersheds causing elevated levels of E.coli, but also to provide an affordable alternative for homeowners. The two census tracts associated with this extension project show a 56.02% and 40.79% low-to-moderate income (LMI) population and a recent income survey yielded a median household income of \$24,000.00. The Town has additional funding supporting this project from Environmental Protection Agency, Maine Revolving Loan fund and Rural Development.

Town of Windham, North Windham Wastewater Treatment System. The Town of Windham was awarded \$1,530,000.00 to support improvements to their wastewater treatment system. This project is Windham's top priority for environmental, economic, and social/ health reasons for all residents and visitors to the Lake Region. The Maine Department of Environmental Protection recently ranked the sewer project the second most important of 77 applicants statewide, awarding the town \$40.6 million in CWSRLF funding and \$2.25 million in debt forgiveness. This solution for North Windham not only demonstrates a realistic solution for Windham but also for the other Towns surrounding Sebago Lake, which have direct impacts to the public water supply for Cumberland County. The new wastewater treatment system will benefit the community by:

1. Supporting new housing options including multi-family workforce, senior, and affordable units;
2. Allowing existing businesses to expand their building footprint;
3. Supporting new office, retail, hospitality, restaurants, brew pubs, and small-scale manufacturing businesses;
4. Adding new jobs created from business growth;
5. Allowing business growth which broadens the tax base;
 - a. The new system is modular allowing for future expansion;
6. Supporting tourism by improving and maintaining clean, beautiful lakes, ponds, rivers, and streams; and
7. Having a public wastewater treatment system and a clean aquifer as a long-term goal represents Windham's commitment to proper climate action.

Clean Water: Other Sewer Infrastructure 5.5

In the spring of 2022 Cumberland awarded SLFRF funding under this category for the City of Westbrook for water and sewer infrastructure, specific to site improvements necessary to ensuring the development of long-term affordable housing development. The City of Westbrook owns an approximately two-acre parcel of land located in the heart of its downtown business district that was acquired through urban renewal in the 1970's. The site is also situated within a Qualified Census Tract (QCT) and Difficult Development Area (DDA).

Transmission and Distribution 5.11

Projects falling under transmission and distribution of drinking water typically involve infrastructure improvements aimed at delivering safe and reliable drinking water to communities.

The Town of Brunswick was awarded \$1,500,000.00 to install a new 12" diameter water main from Maplewood Park on Old Bath Road to Bay Bridge Estates, a distance of 11,100 feet. The Bay Bridge Water Access project is an initiative to provide over 1,300 people, most of whom live in 490 mobile homes, access to a reliable water source.. This project is a response to the water crisis that occurred in 2018 in their

neighborhood. It will enhance public safety for these and other area residents as a public water supply. It will include the addition of hydrants and reduce the need for fore tankers to ferry water long distances. The Town has secured additional funding supporting this project from Congressional funds, and the Towns own ARPA money. The Town is seeking funds from the Maine DECD.

The Town of Pownal was awarded \$20,000.00 to support the purchase of a backup diesel generator, and installation of fuel tanks with a security pad for the Pownal Center Water Association. The current Pownal Center Water Association well supplies water to several businesses and residential homes in the village district. When power is interrupted, the current generator is not suitable to continue the operation of the pump. This causes the Town Office, Fire Department, and Public Works to shut down when water service is interrupted. By upgrading the existing backup generator, Pownal can better serve those already tied to the water and plan for future village development. The median household income for this service area is \$45,000.00 a year.

Revenue Replacement EC (6)

As outlined in the final rule, recipients have the option to calculate revenue loss one time, according to the formula outlined in the final rule; or elect a “Standard Allowance” of up to \$10 million, not to exceed the award allocation, to spend on government services throughout the period of performance.

Cumberland County has elected the standard allowance of \$10 million, and has set aside the standard allowance for Revenue Replacement related projects. These projects include a broad range of general government services under the Revenue Replacement allowable use category. Government services generally include any service traditionally provided by a government:

1. General government administration
2. Staff and administrative facilities
3. Environmental remediation

1.3 Promoting equitable outcomes

The SLFRF program has provided Cumberland County with an opportunity to gain a better understanding of the Government’s role in contributing to racial inequity, and our responsibility to advance racial equity. Cumberland County acknowledges that we must develop a shared racial equity analysis with our sub-awardees. Cumberland County also looks to gain an increased understanding of how the public sector can advance racial equity.

Cumberland County continues to work on addressing equity with the implementation of SLFRF programs through outcomes directed at closing equity gaps, outreach to ensure greater access to existing programs, and equity within the design of programs, such as cultural competency. The County acknowledges that racism and discrimination have created inequities in access to a range of social and economic benefits, such as housing, education, wealth, and employment. These conditions are key drivers to health inequities within communities of color. Similar health inequities are experienced by LGBTQ+ people, immigrants and refugees, and Indigenous communities.

By utilizing a community-driven, data-informed approach, the County aims to ensure the effective, efficient, and equitable distribution of the federal award. Efforts to advance fairness and opportunity have come in the form of creating an ARPA Advisory Committee (AAC) with representatives from the public for each district within Cumberland County; a competitive grant process; and a robust and transparent public process for the funds. Cumberland County has rooted its support for centering the use of our funds towards economic and racial equity.

Addressing racism and discrimination are priorities for Cumberland County Government. Long before most of us had ever heard the word “coronavirus,” Maine suffered from a history of discrimination, the consequences of which resonate today. In particular, the impact of historic policy choices on people of color in the state are widely overlooked. Existing profound racial wealth gaps made it harder for communities of color to weather economic downturns from the pandemic to the financial crisis of 2008.

Because advancing equity requires a systematic approach to embedding fairness in decision-making processes, Cumberland County sought qualified Diversity, Equity, and Inclusion (“DEI”) consulting firms to assist the County in its efforts to advance racial equity. In December of 2022, Cumberland County contracted with OptiPlied, Inc. to create a strategic plan and framework for advancing racial equity within our organization.

Over the next three years, Cumberland County will use the strategic plan to establish the foundation to build future DEI strategic priorities. This foundational work establishes important DEI-related practices targeted at professional development, skills training, and implementing revisions to our Human Resource policies and processes to meet the needs of our evolving workplace.

Diversity, Equity, and Inclusion work is process work; it is not a task that can be checked off at the end of a given time frame. Consequently, to succeed, it must be approached as a collaborative effort rather than as a completion-oriented effort. Each goal within our strategic plan is inclusive of objectives that point toward the future.

The initial strategic plan establishes key practices that will position the County toward Cultural transformation. Those key practices include internal DEI leadership, relevant professional development, common organizational learning, improved Human Resource processes, consistent progress reporting, and sustainable resource allocation. All of these are necessary for the County to sustain welcoming environments for diverse employee communities.

The formation, training, support, and resourcing of the DEI directors group established to lead this organizational effort will be critical to the success of the Cumberland County DEI Strategic Plan and Action Plan. This group has met monthly over the last year. This group serves as guides to all DEI efforts while providing regular progress reporting and adjusting the plan as needed, in the ways which most benefit the needs of County government. Additionally, the County formed a smaller DEI Taskforce which also meets monthly to support moving the DEI Strategic plan forward. Furthermore, the strength of this leadership group will position Cumberland County for its next iteration of DEI strategic planning for the time beyond the 3-year cycle of the present DEI Strategic Plan.

Diversity, equity, and inclusion work is supported by and supports other work occurring simultaneously in Cumberland County. All our efforts are motivated by an institutional interest in serving our staff and community members. Our approach will be systemically, consistently, intentionally, directly, and overall, more effective. These multiple efforts overlap to affect necessary cultural shifts. Specifically, DEI initiatives

introduce an elemental cultural change to organizations to transition from an exclusive environment to a diverse, equitable, and inclusive one. The following highlights the County’s path over the next two years.



Three Year DEI Implementation Action Plan

Year One Action Plan 01-01-2024 through 01-01-2025

Pillar One: Valuing DEI Throughout the Workforce

Goal	Strategy	Action	Task	Responsible Party	Measure	Quarter
1: Cumberland County Leadership possesses skills for effective DEI engagement	1: Equip Cumberland County supervisors with skills to effectively supervise a diverse and inclusive workforce	1: Provide supervisor professional development training on DEI leadership	Seek out consultant or virtual training on the topic of DEI leadership Hold training or assign virtual training sessions for directors		Completion of training	
		2: Create a DEI resource page for supervisor access	Utilize Reading Resource from OptiPlied team and build resources as trainings occur		Working document that increases in number of resources as trainings occur	
	2: Increase cultural competency skills of all Cumberland County leadership and staff	1: Provide DEI professional development for County Commissioners and other staff	Secure introduction to DEI training, or virtual training and conduct at one to two meetings Create or secure an evaluation tool to assess prior knowledge and learning before and after the training		Completion of training	
2: A culture of shared language and messaging is used throughout the Cumberland County system	1: Create a glossary of DEI language and definitions specific to Cumberland County	1: Utilize language from the Cumberland County DEI Policy as foundational terminology	Make a distributable PDF of terms to be used in training and policy revisions Share with directors and initiate implementation of terms		Completed document dispersed to directors and put on internal communications page	

1.4 Community Engagement

Cumberland County prioritizes community engagement to ensure that the allocation and utilization of funds reflect the needs and priorities of its diverse residents. The County employs a range of strategies to gather feedback, capture diverse perspectives, and involve historically underserved communities in the decision-making process. During the 2024 program year, Cumberland County conducted key interviews, community listening sessions and focus groups, to gather information on the Homeless needs in the lakes region. There were two in person focus groups held. The first session was held in Bridgton in partnership with the Lakes Region Recovery Center and the second session was at the Naples Town Hall in partnership with Crosswalk Community Outreach in January 2024. Community listening sessions were also held at the Bridgton Community Center, Naples American Legion, and Windham Public Library in January and February of 2024.

Our Public Health department also continues to actively meet with leaders from different programs/organizations currently working to address priority health problems, social determinants of health or focused on the wellbeing of a particular group of people who are more impacted by health problems, such as people who identify as LGBTQ+, immigrant, BIPOC, older adults, and people with disabilities. Leaders provided data, their understanding of current gaps in public health efforts, and strategies they believe have the most potential for addressing those gaps.

1.5 Labor Practices

Cumberland County continues its effort to support economic recovery through strong employment opportunities for construction workers. Where applicable, the County will follow local labor regulations including local hire preferences; apprenticeship requirements; prevailing wage standards, and labor agreements. For example, Cumberland County has projects that are funded through multiple federal sources that require regulations such as Davis Bacon, Section 3 and BABA. As such, the County will follow the strictest of the program's rules, obtain, and maintain compliance with such regulations.

Currently the County does not have any projects by which the sole source of funds being SLFRF is at or above \$10 million. Where we have not needed to implement Davis Bacon on the sole sourced SLFRF funded projects, the County does request that the grantee document and closely monitor and development of labor practices. Our contractual agreements all outline the required labor practices of the program.

1.6 Use of Evidence

Most of Cumberland County's approved projects do not require evidence-based reporting because the projects are for capital expenses, including construction. The programs that do have evidence-based interventions and/or program evaluation elements are required to identify evidence to support that the project will have its intended impact. This evidence may include results from previous programs in Cumberland County, similar programs in Maine or other states, or information from academic research or existing evidence clearinghouses.

For projects that are being evaluated, in place of evidence-based data, detailed demographic and usage data will be collected to understand the impacts of the services for program participants. A more detailed breakdown of each project's evidence-based interventions is outlined below in the project inventory.

1.7 Performance Report

Cumberland County created a performance matrix for each project and or program that is funded using SLFRF. The matrix identifies specific performance indicators as it relates to the scope of work of the grant. Unlike other federal grant programs where performance measures and activities are black and white; SLFRF provides flexibility to use the funding for what is needed in our Community so long as it meets the core objective of the program.

This thereby creates an adverse effect on creating standard matrix that can be used for every category and sub category. Instead, the County created a performance matrix that combines the required documentation by treasury along with additional data points to highlight each grants goals, measures and outcomes as they relate back to or in connection the Pandemic.

Grantees are provided a performance metric that is specific to each grant and identifies impacts produced by the projects, and measure results of the programs based on the units of service provided and/or end user results of a project or program. The County's performance metrics are built within our initial application process. Scoring of all applicants are based on the following: relevance to County needs, effectiveness of existing achievements, and efficiency of resources, impact, and sustainability. Those same performance metrics are then associated with the ongoing project or program's objective and goals, as reported to the County. Sub-awardees are required to file quarterly and annual reports. These reports outline accomplishments and financial data. The reporting measures vary per project, based on the metrics created for the program/project upon initial setup. Reports may be submitted monthly or quarterly, depending on frequency of draw requests from the sub-awardee. All sub-awardees will submit one annual and/or final closeout report.

Compliance staff utilize Neighborly software and Microsoft Excel to track and report sub-recipient performance. Staff also utilizes our in-house web-based financial reporting system, MUNIS. The Compliance Manager and Special Projects Administrator are trained on all systems, including MUNIS and Neighborly, which report all activities of the ARPA SLFRF program and expenditure status.

Additionally, ARPA SLFRF administrators utilize legal consultants when necessary to confirm project eligibility, and that expenditures align with and meet the treasury guidelines.

2.0 Project Inventory

The following pages provide a description of each project undertaken. Cumberland County must provide the minimum required information, and must ensure that our project inventory contains the additional information required by Treasury's Reporting guidance, including but not limited to information about performance measures and evidence/evaluation for each project. In all cases, recipients must post publicly (and submit to Treasury) a single PDF file of their Recovery Plan, which includes the Project Inventory.

Project Inventory



SLFRF Recovery Plan Performance Report 2024

Report Period: July 01, 2023-June 30, 2024

This Project Inventory reflects initiatives that were approved as of June 30, 2024 through the County's documentation process. For information on all initiatives, visit the Cumberland County ARPA website at <https://www.cumberlandcounty.org/754/American-Rescue-Plan-Act>

SLFRF Recovery Plan Performance Report 2024 Project Inventory

Project Name: County Personal Protective Equipment Funding amount: \$21,309.96	Project Identification Number: 54-54551-6950-21003
Project Expenditure Category: 1-Public Health	Sub Category: 1.5-Personal Protective Equipment

Project Overview

Through the use of an interdepartmental agreement, the County Executive department collaborated with The Cumberland County Emergency Management Agency, to distribute PPE throughout our region. This included County Personal, such as our sheriff's department, Regional EMS Providers, and County personal. In addition to providing this to our County Personal to maintain operations, CCEMA assisted all regional Municipalities, Social service providers, and local Non Profits to obtain this PPE free. CCEMA will track the PPE and provide a list of whom received the PPE, CCEMA will ensure and keep separate this PPE from any other State or Federal Program PPE

Website Link:

Use of Evidence

Total funds being used for evidence-based interventions (if applicable): N/A

Evidence base for the interventions N/A

Is the program evaluation being used? N/A

If program evaluation being used, evaluation Description: N/A

Performance Report: The following is the performance matrix created by the County to demonstrate key performance indicators for our jurisdiction's major SLFRF funded projects.

Objective:	Increase access of personal protective equipment to prevent the spread of COVID-19.
Activities to achieve objective:	Cumberland County purchased a pallet of PPE.
Expected results:	These supplies allowed our front-line workers to maintain operations during the many waves of COVID-19 that have hit our county over the last several months
Performance indicator:	Cumberland County's Emergency Management Agency distributed the PPE to County facilities, regional first responders and nonprofits that were not covered by FEMA. Cumberland County EMA distributed over 23 cases, totaling 10,120 individual masks to regional first responders, municipalities and nonprofits.
Target Population or group & Number served:	The program targeted the general public that experienced public health effects from the pandemic.
Period of Performance:	August 01, 2021 – December 30, 2023.
Partner Organizations or Collaborators:	Cumberland County Emergency Management.
Mandatory Indicators:	No Mandatory indicators are applicable for this Subcategory activity

SLFRF Recovery Plan Performance Report 2024 Project Inventory

Project Name: County Jail Medical Wing Funding amount: \$9,901,006.00	Project Identification Number: 54-54551-6950-21005
Project Expenditure Category: 1-Public Health	Sub Category: 14-Prevention in Congregate Settings Nursing Homes Prisons Jails Dense Work Sites Schools Child care facilities etc.

Project Overview

Since the beginning of the pandemic, it was abundantly clear that concrete settings such as the Cumberland County Jail facilitate the rapid spread of the virus, putting incarcerated people and staff at serious risk. In order for Cumberland County to respond to the public health impacts of the public health emergency at the Cumberland County Jail, Cumberland County Government is expanding the existing medical unit. Increasing the size of the medical wing, results in increased capacity and flexibility to handle multiple inmate health issues. All cells will be negative pressure cells to provide the ability to isolate infectious patients better and faster, reducing the likelihood of community spread in the building. The expanded medical wing area will also better separate routine medical clinic care from patients with communicable disease e.g., COVID, influenza, etc. that require medical monitoring. The COVID-19 pandemic not only caused a spike in patients w psychiatric co-morbidities, but also an increase in the degree of physical health problems of this population we are seeing a sicker population - including an increase in arrestees with serious alcohol and other substance use disorders - all requiring increased healthcare monitoring and treatments of patients engaged in detoxification protocols, etc.

Ancillary to this project is the opportunity to utilize space of the existing medical unit to be repurposed as a mental health psychiatric unit where the MH team can have offices and acute patients on watches can be better monitored by clinical and security staff. The benefit of the expansion is for the inmates seeking quality care in times of need as well as promotes a healthier safer work environment for jail staff.

This will allow the County to mitigate and prevent COVID-19 in a manner that is consistent with recommendations and guidance from the Centers for Disease. The response will create an effective method of isolation and quarantine; through the use of installation and improvement of ventilation systems and bring the needed mitigation and prevention practices.

The project will consist of designing and constructing the additional onto the medical area of the Jail. The County has hired SMRT, an Architectural and Engineering firm to provide design and Project Management during the design and construction phase of the project. The County has also hired Landry & French to construct the wing.

Website Link: [Cumberland County ARPA projects page](#)

Use of Evidence

Total funds being used for evidence-based interventions (if applicable): N/A

Evidence base for the interventions N/A

Is the program evaluation being used? N/A

If program evaluation being used, evaluation Description: N/A

Performance Report: The following is the performance matrix created by the County to demonstrate key performance indicators for our jurisdiction's major SLFRF funded projects.

Objective:	Create an effective method of isolation and quarantine; through expansion, installation and improvement of ventilation systems and bringing the needed mitigation and prevention practices through expansion and upgrades to the facility. Isolate infectious patients, increase capacity and flexibility to handle multiple inmate health issue.
Activities to achieve objective:	Expand medical wing area, and create negative pressure cells to provide isolation from infectious patients.
Expected results:	<p>The new Medical Wing will be larger and provide cells equipped with negative pressure to isolate and quarantine inmates effectively. Improvements will be made to the existing ventilation systems that will create an appropriate air exchange to meet CDC guidelines.</p> <p>The addition creates the opportunity to utilize space of the existing medical unit to be repurposed as a mental health psychiatric unit where the MH team can have offices and acute patients on watches can be better monitored by clinical and security staff.</p> <p>The benefit of the expansion is for the inmates seeking quality care in times of need as well as promotes a healthier safer work environment for Jail staff.</p>
Performance indicator:	Once completed, the County will document the results of the expansion and the benefits it has on the County Jail inmates and staff.
Target Population or group & Number served:	Disproportionally impacted and the general Public.
Period of Performance:	August 01, 2021 – December 31, 2026.
Partner Organizations or Collaborators:	N/A
Mandatory Indicators:	No Mandatory indicators are applicable for this Subcategory activity.

SLFRF Recovery Plan Performance Report 2024 Project Inventory

Project Name: County Inmate Medical Costs	Project Identification Number: 54-54551-6950-21004
Funding amount: \$554,793.87	
Project Expenditure Category: 1-Public Health	Sub Category: 1.6-Medical Expenses including Alternative Care Facilities

Project Overview

The Cumberland County Inmate Medical project provides funding through an interdepartmental agreement to the County’s outside medical vendor for medical expenses, associated with and acerbated by the COVID-19 pandemic. The Project includes two phases, the first phase occurred because of the impacts of the COVID-19 on the County Inmates throughout 2020-2021. The Cumberland County Jail utilizes an outside vendor to handle all inmate medical needs within the jail, utilizing a “cost-plus” payment contract. Under this system, the County pays the vendor a fixed annual amount intended to be a worst-case estimate of actual costs for the year. If actual costs come in under budget, the County receives money back as a reimbursement. If costs go over budget, then the County must pay the vendor the additional amount. Costs are recorded each year from July 1 to June 30th of each year. For the first time in many years, medical expenses went over budget during FY 20-21, by roughly \$329,000. All of the additional expenses could be directly attributed to Covid 19, in the form of additional staffing expenses, quarantining needs, PPE costs, and regular Covid-19 testing.

Cumberland County in providing additional funding to support phase two of the project, which is to assist our contractor with their needs to initially require additional staffing due to the Pandemic. This has now shift to efforts towards retaining necessary medical staff to help maintain both adequate levels of staffing but also needs of the inmates. As a result of our funding support, the County has not had drastic overturn of healthcare providers. The program will run until June30, 2024.

All funds expended under this project are consistent with COVID–19 mitigation and prevention in a manner that is consistent with recommendations and guidance from the Centers for Disease Control and Prevention, including isolation and quarantine; mitigation and prevention practices in congregate settings; COVID– 19 prevention and treatment expenses, additional staffing and COVID-19 testing.

Website Link [Cumberland County Corrections](https://www.cumberlandcountymaine.gov/corrections)

Use of Evidence

Total funds being used for evidence-based interventions (if applicable): N/A

Evidence base for the interventions N/A

Is the program evaluation being used? N/A

If program evaluation being used, evaluation Description: N/A

Performance Report: The following is the performance matrix created by the County to demonstrate key performance indicators for our jurisdiction's major SLFRF funded projects.

Objective:	Funding is provided to support increased medical costs associated with the County Jail. From the beginning of the COVID-19 Pandemic the County Jail saw a number of increased cases of COVID-19 which regarded much need medical staffing, in order to meet the needs of the inmates County need increase staffing time and costs associated with providing proper treatment to the inmates at the jail.
Activities to achieve objective:	Assess and evaluate expenses that occurred and determined the cost increases specific to COVID-19. Work with the current Medical Vendor and our additional subcontract that provides oversight and guidance on Jail medical to execute a wage analyses to maintain and retain nursing staff at the jail.
Expected results:	Support the overages that were not anticipates or budgeted for. Maintain adequate medical services for the Jail inmates suffering from the effects of COVID-19.
Performance indicator:	Maintain staffing levels of nursing staff at the Jail.
Target Population or group & Number served:	This project targets individuals more specifically Jail inmates that are disproportionally impacted and the public that experienced public health effects from the pandemic.
Period of Performance:	August 2021- June 30, 2024.
Partner Organizations or Collaborators:	Armor Medical.
Mandatory Indicators:	No Mandatory indicators are applicable for this Subcategory activity.

SLFRF Recovery Plan Performance Report 2024 Project Inventory

Project Name: A Ride to Work Funding amount: \$100,000.00	Project Identification Number: 54-54551-6950-30086
Project Expenditure Category : 1-Public Health	Sub Category: 1.13-Substance Use Services

Project Overview

United recovery fund formally known as “Maine Recovery Fund” (MERF) maintains the same mission to dignify supportive employment and to provide integrative services for people in Cumberland County recovering from substance use disorder, reentering from jail and prison, new Americans, and returning veterans facing reentry obstacles. This already vulnerable population was further displaced by COVID-19 as much of the existing social services infrastructure was inaccessible or unavailable. We have found our services to be even more essential during COVID-19 as displacement, unemployment, and homelessness have been amplified.



United recovery using the Award from Cumberland County provided transportation to people facing reentry obstacles in Cumberland County that ranges from those recovering from substance use disorder and reentering from jail and prison to new Americans and returning veterans.

The goal of the program is to serve the historically marginalized and underserved community of individuals in recovery from substance use disorder, recently out of incarceration, and new Americans.

The intended outcome of our program is to eliminate the barrier of a ride to work for individuals who do not have a driver’s license, access to a vehicle, and/or the ability to afford and/or access to public transportation. With the use of the SLFRF, 271 people were assisted through the ride to work program and total of 6,772 rides were provided.

Website Link: <https://www.unitedrecoveryfund.org/>

Use of Evidence

Total funds being used for evidence-based interventions (if applicable): N/A

Evidence base for the interventions N/A

Is the program evaluation being used? N/A

If program evaluation being used, evaluation Description: N/A

Performance Report: The following is the performance matrix created by the County to demonstrate key performance indicators for our jurisdiction's major SLFRF funded projects.

Objective:	Aid impacted household in the form of Behavioral Health intervention that are intended to eliminate the barrier of a ride to work for individuals who do not have a driver's license, access to a vehicle, and/or the ability to afford and/or access to public transportation.
Activities to achieve objective:	Provided access to transportation for people facing reentry obstacles in Cumberland County that ranges from those recovering from substance use disorder and reentering from jail and prison to new Americans and returning veterans.
Expected results:	Reduce barriers. COVID-19 significantly impacted the ability to provide transportation Pre-pandemic, carpooling, public transportation, volunteers, and allowed the transport of clients to their various job sites Social distancing restrictions due to COVID-19 put an end to these more efficient modes of transportation Throughout the pandemic, the need to provide single-occupancy taxis and Uber rides more than tripled the pre-pandemic transportation cost.
Performance indicator:	Total number of Rides provide and Total number of individuals served by the program. The program provided 271 persons with assistance that totaled 6,772 rides.
Target Population or group & Number served:	Impacted and disproportionate households.
Period of Performance:	June 17, 2022- December 31, 2023.
Partner Organizations or Collaborators:	MaineWorks, Maine Department of Corrections, Maine Inside Out, Maine Prisoner Advocacy Coalition, Maine Prisoner Reentry Network, Maine Probation & Parole, NAACP (Maine State Prison Chapter), Office of Cumberland County District Attorney, Spurwink, and numerous sober living residences.
Mandatory Indicators:	No Mandatory indicators are applicable for this Subcategory activity.

SLFRF Recovery Plan Performance Report 2024 Project Inventory

Project Name: Building Hope and Creating Community	Project Identification Number: 54-54551-6950-30034
Funding amount: \$515,152.00	
Project Expenditure Category: 1-Public Health	Sub Category: 14-Prevention in Congregate Settings Nursing Homes Prisons Jails Dense Work Sites Schools Child care facilities etc.

Project Overview

Isolation caused by COVID-19 led to an increase in fatal overdoses in Maine, rising from 380 in 2019 to 515 in 2020, and further to 636 in 2021. The highest number of confirmed or suspected overdose deaths during this three-year period occurred in Cumberland and Penobscot counties.



The Portland Recovery Community Center (PRCC) received Cumberland County ARPA funding to support a building renovation, enabling expanded services at a critical time as the COVID-19 pandemic and the opioid epidemic converge. This renovation will allow more people affected by addiction to receive effective in-person recovery support despite COVID-19.

The project, being construction in nature, documents both the construction elements directly supported by ARPA funds and the community benefits resulting from these funds. The population served includes households impacted by COVID-19, those who have experienced negative economic impacts, and the general public.

The ARPA funding for the building has significantly impacted the lives of nearly 4,000 people. Surveys of participants reflect how much this beautiful and safe space contributes to addiction recovery and enhances self-esteem. The building stands as a testament to eradicating stigma. Visitors and participants frequently exclaim, "This is beautiful!" when they see the new building. We believe that this space is making a difference in improving people's lives and mental health beyond what we could have imagined. Over 2,500 people have utilized the space since the renovation. The improved space continues to foster growth in services and provides a positive environment for those seeking and in recovery from substance use.

Website Link: <https://portlandrecovery.org/>

Use of Evidence

Total funds being used for evidence-based interventions (if applicable): N/A

Evidence base for the interventions: N/A

Is the program evaluation being used? N/A

If program evaluation being used, evaluation Description: N/A

Performance Report: The following is the performance matrix created by the County to demonstrate key performance indicators for our jurisdiction's major SLFRF funded projects.

Objective:	Provide a safe, accessible space for those seeking recovery and prevention services from opioid use disorder to be conducted.
Activities to achieve objective:	Through the purchase of improved ventilation systems designed to address the CDC recommended air exchange requirements for COVID-19, mitigate exposure through social distancing by providing spaces that are larger for meetings to be held and the creation of an outdoor meeting space. Lastly, providing funding to support replacing desks with ones that are health grade material and can support cleaning of services with CDC recommended products.
Expected results:	The building renovation will allow more people affected by addiction to receive effective in-person recovery support despite COVID-19 The expansion comes at a critical time, as two major public health issues collide the COVID-19 pandemic and the opioid epidemic Isolation caused by COVID-19 led to an increase in fatal overdoses in Maine.
Performance indicator:	Increase in number of participants using services at the center.
Target Population or group & Number served:	The population served by this project includes households that were Impacted by Covid19, those that have experienced a negative economic impact as well as the general public. To date the efforts have increased the use and the number of participants is over 2,500.00
Period of Performance:	May 26, 2022 – July 31, 2024.
Partner Organizations or Collaborators:	Portland Recovery Community Center.
Mandatory Indicators:	No Mandatory indicators are applicable for this Subcategory activity

SLFRF Recovery Plan Performance Report 2024 Project Inventory

Project Name: Communications Space Enhancement Funding amount: \$2,113,406.21	Project Identification Number: 54-54551-6950-21008
Project Expenditure Category: 1-Public Health	Sub Category: 14-Prevention in Congregate Settings Nursing Homes Prisons Jails Dense Work Sites Schools Child care facilities etc.

Project Overview



As an arm to our first response system, the Cumberland County Regional 911 call center has continued to work throughout the pandemic assisting both our residents as well as our EMS and Police. The services provided are 24 hours a day, seven days a week, and as such workers cannot leave their command post empty. Many come to work with COVID-19 and work out of quarantine trailers or convenience rooms. Due to this, the space limited the ability to social distance staff, have proper ventilation, or isolate. Leaving this sector

with both high levels of transmission and staff turnover.

During the Program year of 2023-2024, Cumberland County Government underwent expansion of the existing facilities and addressed the COVID-19 impacts through responding to Public Health emergencies.

Website Link: [ARPA Projects Webpage](#)

Use of Evidence

Total funds being used for evidence-based interventions (if applicable): N/A

Evidence base for the interventions: N/A

Is the program evaluation being used? N/A

If program evaluation being used, evaluation Description: N/A

Performance Report: The following is the performance matrix created by the County to demonstrate key performance indicators for our jurisdiction's major SLFRF funded projects.

Objective:	Reduce harm and impact of Covid-19 by increasing the square footage of the call center, allowing for social distancing and an area for isolating sick staff.
Activities to achieve objective:	Provide upgraded Consoles for staff to use that have plexiglass barriers and medical grade surfaces. Install new ventilation system and upgrade existing controls to allow for and thereby provide adequate air exchange to reduce transmission rates.
Expected results:	Reduced transmission rates which have been linked to the reduced number of staff call outs due to COVID-19.
Performance indicator:	The expansion has allowed our front-line workers to maintain operations during the many waves of COVID-19. Additionally, the social distancing has reduced the number of COVID-19 cases within the facility.
Target Population or group & Number served:	The program targeted the general public that experienced public health effects from the pandemic.
Period of Performance:	August 01, 2021 – December 30, 2024.
Partner Organizations or Collaborators:	Cumberland County Dispatch Center.
Mandatory Indicators:	No Mandatory indicators are applicable for this Subcategory activity

SLFRF Recovery Plan Performance Report 2024 Project Inventory

Project Name: Courthouse Air Handler 1 Funding amount: \$3,700,000.00	Project Identification Number: 54-54551-6950-21007
Project Expenditure Category: 1-Public Health	Sub Category: 14-Prevention in Congregate Settings Nursing Homes Prisons Jails Dense Work Sites Schools Child care facilities etc.

Project Overview

The Cumberland Courthouse encompasses a space for both judicial functions for Cumberland County, State of Maine, and County government administration. The building's main purpose is to service the residents of Cumberland County and provide a safe, accessible and efficient means to do so. Like many others, our courthouse is home to many courtrooms, communal areas for judicial support staff and County Government administration offices. The existing air handler 1 cannot address COVID-19 concerns because the existing unit is not operating at the required air capacity to provide slow, steady air speed per recommendation of the CDC. Additionally the existing unit cannot provide air filtration recommended through fiber-based material or membrane. The County has the inability to increase air filters as recommended by CDC.

To keep members of our community and staff alike safe and keep our building accessible, in response to public health emergency for purposes of COVID-19 mitigation and prevention in a manner that is consistent with recommendations and guidance from the Centers for Disease Cumberland County is installing new pneumatic control system and air filtration systems.

Website Link: [ARPA Projects Webpage](#)

Use of Evidence

Total funds being used for evidence-based interventions (if applicable): N/A

Evidence base for the interventions N/A

Is the program evaluation being used? N/A

If program evaluation being used, evaluation Description: N/A

Performance Report: The following is the performance matrix created by the County to demonstrate key performance indicators for our jurisdiction's major SLFRF funded projects.

Objective:	Support necessary COVID-19 Mitigation and Prevention Measures
Activities to achieve objective:	Install new ventilation system and upgrade existing controls to allow for and thereby provide adequate air exchange to reduce transmission rates.
Expected results:	Reduce harm and impact of Covid-19 by increasing air exchange through the installation and improvement of the existing ventilation system in the Courthouse.
Performance indicator:	Reduce number of cases of COVID-19.
Target Population or group & Number served:	General Public
Period of Performance:	August 01, 2021- December 31, 2026.
Partner Organizations or Collaborators:	Facilities Department
Mandatory Indicators:	No Mandatory indicators are applicable for this Subcategory activity.

SLFRF Recovery Plan Performance Report 2024 Project Inventory

Project Name: Food Security Hub Funding amount: \$2,000,000.00	Project Identification Number: 54-54551-6950-30027
Project Expenditure Category : 1-Public Health	Sub Category: 114-Other Public Health Services

Project Overview

The COVID-19 Public Health crisis has exacerbated food insecurity in Cumberland County. Concurringly Cumberland County’s homeless population has grown to unprecedented levels. This vulnerable population has been impacted far greater than most. To address the need for food services among the County's homeless population, Cumberland County is collaborating with one of our region's largest homeless providers, **Preble Street**, to increase food services to homeless.



The objective of the program is to increase the number of meals produced in our region, which in turn will increase the number of homeless persons served in our community. **Preble street** will track the number of persons served and meals distributed through the new food hub. This project will address the ongoing, systemic public health impacts of food insecurity that have increased during the pandemic and disproportionately affected low-income communities and people of color, especially those experiencing homelessness.

Website Link: [Food Security Hub](#)

Use of Evidence

Total funds being used for evidence-based interventions (if applicable): N/A

Evidence base for the interventions N/A

Is the program evaluation being used? N/A

If program evaluation being used, evaluation Description: N/A

**Performance Report: The following is the
Performance matrix created by the County to
demonstrate key performance indicators for our
jurisdiction's major SLFRF funded projects.**

Objective:	To address the need for food insecurity among the County's homeless population,
Activities to achieve objective:	Construct a commercial kitchen, which will encompass food preparation, production, and distribution.
Expected results:	Increase the number of meals produced in our region, which in turn will increase the number of homeless persons served in our community.
Performance indicator:	Data will be collected and tracked to document the increased number of the meals that are provided as a direct result of the construction of the commercial kitchen.
Target Population or group & Number served:	Preble street is the largest homeless provider in our region, and has such the target population that is served are those that are experiencing homelessness and or food insecurity. Treasury presumes this group to be Impacted and Disproportionally impacted households.
Period of Performance:	June 17, 2022- December 31, 2025.
Partner Organizations or Collaborators:	Preble Street.
Mandatory Indicators:	No Mandatory indicators are applicable for this Subcategory activity.

SLFRF Recovery Plan Performance Report 2024 Project Inventory

Project Name: Regional Communications Radio System	Project Identification Number: 54-54551-6950-30198
Funding amount: \$1,900,000.00	
Project Expenditure Category: 1-Public Health	Sub Category: 17-Other COVID-19 Public Health Expenses including Communications Enforcement Isolation Quarantine

Project Overview



Through the use of an interdepartmental agreement, Cumberland County Regional Communication Center will use SLFR funding to purchase emergency response equipment. The project is in response to the Public Health emergency and comes at a time when the current repeater and receivers (VHF radio system) are at the end of life and need to be replaced. By upgrading the regional VHF simulcast radio system it will have ripple effects regionally and support our Fire, EMS, and Law Enforcement operations. When completed, the system will increase reliable communications coverage throughout Cumberland County.

Website Link: [Regional Communications Center](#)

Use of Evidence

Total funds being used for evidence-based interventions (if applicable): N/A

Evidence base for the interventions N/A

Is the program evaluation being used? N/A

If program evaluation being used, evaluation Description: N/A

Performance Report: The following is the performance matrix created by the County to demonstrate key performance indicators for our jurisdiction's major SLFRF funded projects.

Objective:	Support the development and implementation of new communications infrastructure for our region.
Activities to achieve objective:	Purchase and install VHF Radio system.
Expected results:	Increase reliable communications coverage throughout Cumberland County.
Performance indicator:	Reduced issues with existing communication coverage disruptions.
Target Population or group & Number served:	General Public
Period of Performance:	August 08, 2021- December 31, 2026.
Partner Organizations or Collaborators:	Regional EMS, Fire and Police departments.
Mandatory Indicators:	No Mandatory indicators are applicable for this Subcategory activity.

SLFRF Recovery Plan Performance Report 2024 Project Inventory

Project Name: Survivor's fund Funding amount: \$150,000.00	Project Identification Number: 30190
Project Expenditure Category : 1-Public Health	Sub Category: 111-Community Violence Interventions

Project Overview

The COVID-19 pandemic exacerbated many social issues, including domestic violence. Lockdowns, social distancing measures, and economic strain have created conditions that can escalate tensions within households and limit avenues for seeking help or escape for victims. Addressing the increase in domestic violence during and ongoing from the pandemic requires a multifaceted approach, including increased support for victims.



Cumberland County is addressing these issues by collaborating with **Through These Doors** a domestic violence community organization that provides regional support. Cumberland County, by partnering with **Through These Doors**, to support and provide resources to survivors as they attempt to stay safe and build a life free of abuse and violence. Funds for basic short-

term support such as housing and shelter, relocation, and safety needs make an important difference when coupled with supportive services that Through These Doors advocates provide.

Website Link: [Through These Doors](#)

Use of Evidence

Total funds being used for evidence-based interventions (if applicable): N/A

Evidence base for the interventions N/A

Is the program evaluation being used? N/A

If program evaluation being used, evaluation Description: N/A

Performance Report: The following is the performance matrix created by the County to demonstrate key performance indicators for our jurisdiction's major SLFRF funded projects.:

Objective:	Preventing and responding to violence.
Activities to achieve objective:	Housing and relocation related services.
Expected results:	Support and provide resources to survivors as they attempt to stay safe and build a life free of abuse and violence.
Performance indicator:	Total number Households provided services needed to be free of abuse and violence.
Target Population or group & Number served:	Victims of Domestic Violence.
Period of Performance:	February 01, 2023 – December 31, 2024.
Partner Organizations or Collaborators:	Through These Doors
Mandatory Indicators:	No Mandatory indicators are applicable for this Subcategory activity.

SLFRF Recovery Plan Performance Report 2024 Project Inventory

Project Name: Town of Pownal Mallet Hall Communications	Project Identification Number: 30081
Funding amount: \$155,214.00	
Project Expenditure Category : 1-Public Health	Sub Category: 1.14-Other Public Health Services

Project Overview

The Town of Pownal received SLFR Funds to support the need for Technology infrastructure to improve access to and the user experience of government IT systems as well as technology improvements to increase public access and delivery of government programs and services to covid-19 mitigation and prevention through Public Communication efforts

The Project will consist of fixing the acoustics in the meeting room by applying sound muffling fabric and updating the windows. Purchasing all the necessary equipment to run and allow for remote access and updating the elevator as the meeting room is on the 2nd floor.



The Goals of the project are to increase the overall level of town communication to residents. Once the system is in place, analytical data will be used to show the increase use by the public, as well as document the use of the equipment for public service announcement and any community-based needs. This project will serve the general populations. The following data sets will be tracked:

- Technology infrastructure to adapt government operations
- Data regarding number of users and increased use of services provided by the Town that support Community Need.

Website Link: <https://www.pownalmaine.org/>

Use of Evidence

Total funds being used for evidence-based interventions (if applicable): N/A

Evidence base for the interventions N/A

Is the program evaluation being used? N/A

If program evaluation being used, evaluation Description: N/A

Performance Report: The following is the performance matrix created by the County to demonstrate key performance indicators for our jurisdiction's major SLFRF funded projects.

Objective:	Increase public access and delivery of government programs and services for covid-19 mitigation and prevention through Public Communication efforts.
Activities to achieve objective:	Purchasing all the necessary equipment to run and allow for remote access, including acoustic treatment and updating the elevator as the meeting room is on the 2nd floor.
Expected results:	Reduce barriers, by increasing the overall level of town communication to residents.
Performance indicator:	The town of Pownal targeted the analytical data regarding number of users and increased use of services provided by the Town that support Community Need. The data highlights the increased use of and access to the meetings.
Target Population or group & Number served:	This project targets the General Public, Impacted and disproportionately impacted households.
Period of Performance:	August 03, 2022- December 31, 2026.
Partner Organizations or Collaborators:	Town of Pownal.
Mandatory Indicators:	No Mandatory indicators are applicable for this Subcategory activity.

SLFRF Recovery Plan Performance Report 2024 Project Inventory

Project Name: Milestone Recovery Center	Project Identification Number: 54-54551-6950-30127
Funding amount: \$822,700.00	
Project Expenditure Category: 1-Public Health	Sub Category: 113-Substance Use Services

Project Overview

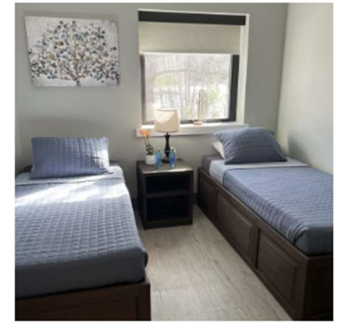
In May 2024, Milestone opened a major expansion of its detox program from 16 beds to 30. The culmination of a three-year campaign, the project involved the opening of a new state-of-the-art facility in Portland. With



15 comfortable double-occupancy rooms, three new group counseling rooms, expanded nursing facilities, a commercial kitchen, and a dedicated lounge. The new building affords clients a peaceful, comforting environment to undertake the first steps in their recovery, and allows treatment of nearly double the clients with the dignity and professionalism they deserve.

Milestone’s detoxification program offers Maine residents of any gender a safe, medically-supervised transition through the acute stages of withdrawal from alcohol, opioids, or other addictive substances. A 24-hour nursing staff and supervising physician provide medical care to manage symptoms and help with the transition.

Ancillary to the expansion, Milestone was able to establish an all-new 150-person outpatient program co-located on site, helping to set clients up for success as they transition out of detox and into community-based recovery.



Website Link: <https://milestone-recovery.org/>

Use of Evidence

Total funds being used for evidence-based interventions (if applicable): N/A

Evidence base for the interventions: N/A

Is the program evaluation being used? N/A

If program evaluation being used, evaluation Description: N/A

Performance Report: The following is the performance matrix created by the County to demonstrate key performance indicators for our jurisdiction's major SLFRF funded projects.

Objective:	Support costs associated with the expansion of its detox facility from sixteen beds to twenty-four
Activities to achieve objective:	Site acquisition cost.
Expected results:	Increase access to treatment.
Performance indicator:	Increase number of clients in treatment.
Target Population or group & Number served:	Individuals with Substance Use Disorder. Treasury presumes these individuals to be Impacted and Disproportionately impacted.
Period of Performance:	August 25, 2023- December 31, 2026.
Partner Organizations or Collaborators:	Milestone & State of Maine Department of Health and Human Services.
Mandatory Indicators:	No Mandatory indicators are applicable for this Subcategory activity.

SLFRF Recovery Plan Performance Report 2024 Project Inventory

Project Name: County Inmate Medical Costs	Project Identification Number: 54-54551-6950-21004
Funding amount: \$554,793.87	
Project Expenditure Category: 1-Public Health	Sub Category: 1.6-Medical Expenses including Alternative Care Facilities

Project Overview

The Cumberland County Inmate Medical project provides funding through an interdepartmental agreement to the County’s outside medical vendor for medical expenses, associated with and acerbated by the COVID-19 pandemic. The Project includes two phases, the first phase occurred because of the impacts of the COVID-19 on the County Inmates throughout 2020-2021. The Cumberland County Jail utilizes an outside vendor to handle all inmate medical needs within the jail, utilizing a “cost-plus” payment contract. Under this system, the County pays the vendor a fixed annual amount intended to be a worst-case estimate of actual costs for the year. If actual costs come in under budget, the County receives money back as a reimbursement. If costs go over budget, then the County must pay the vendor the additional amount. Costs are recorded each year from July 1 to June 30th of each year. For the first time in many years, medical expenses went over budget during FY 20-21, by roughly \$329,000. All of the additional expenses could be directly attributed to Covid 19, in the form of additional staffing expenses, quarantining needs, PPE costs, and regular Covid-19 testing.

Cumberland County in providing additional funding to support phase two of the project, which is to assist our contractor with their needs to initially require additional staffing due to the Pandemic. This has now shifted to efforts towards retaining necessary medical staff to help maintain both adequate levels of staffing but also needs of the inmates. As a result of our funding support, the County has not had drastic overturn of healthcare providers. The program will run until June30, 2024.

All funds expended under this project are consistent with COVID–19 mitigation and prevention in a manner that is consistent with recommendations and guidance from the Centers for Disease Control and Prevention, including isolation and quarantine; mitigation and prevention practices in congregate settings; COVID– 19 prevention and treatment expenses, additional staffing and COVID-19 testing.

Website Link [Cumberland County Corrections](https://www.cumberlandcountymaine.gov/corrections)

Use of Evidence

Total funds being used for evidence-based interventions (if applicable): N/A

Evidence base for the interventions N/A

Is the program evaluation being used? N/A

If program evaluation being used, evaluation Description: N/A

Performance Report: The following is the performance matrix created by the County to demonstrate key performance indicators for our jurisdiction's major SLFRF funded projects.

Objective:	Funding is provided to support increased medical costs associated with the County Jail. From the beginning of the COVID-19 Pandemic the County Jail saw a number of increased cases of COVID-19 which regarded much need medical staffing, in order to meet the needs of the inmates County need increase staffing time and costs associated with providing proper treatment to the inmates at the jail.
Activities to achieve objective:	Assess and evaluate expenses that occurred and determined the cost increases specific to COVID-19. Work with the current Medical Vendor and our additional subcontract that provides oversight and guidance on Jail medical to execute a wage analyses to maintain and retain nursing staff at the jail.
Expected results:	Support the overages that were not anticipates or budgeted for. Maintain adequate medical services for the Jail inmates suffering from the effects of COVID-19.
Performance indicator:	Maintain staffing levels of nursing staff at the Jail.
Target Population or group & Number served:	This project targets individuals more specifically Jail inmates that are disproportionally impacted and the public that experienced public health effects from the pandemic.
Period of Performance:	August 2021- June 30, 2024.
Partner Organizations or Collaborators:	Armor Medical.
Mandatory Indicators:	No Mandatory indicators are applicable for this Subcategory activity.

SLFRF Recovery Plan Performance Report 2024 Project Inventory

Project Name: Cumberland County Adult Education and Career Development HUB	Project Identification Number: 54-54552-6950-3022
Funding amount: \$500,000.00	
Project Expenditure Category : 2-Negative Economic Impacts	Sub Category: 225-Addressing Educational Disparities Academic Social and Emotional Services

Project Overview

Workforce shortages exacerbated by the COVID-19 pandemic have created rippling impacts on our academics and highlighted education disparities within Cumberland County. Two groups in particular have been disproportionately impacted by the current economic and health crises brought on by the pandemic. English language learners and young adults ages 17-28. Funding is needed to address the basic needs of new Americans and youth in order to allow them to advance to the advanced workforce and college preparation courses.

Cumberland County will partner with Portland Adult Education and Career Development Hub. The Hub will take a county-wide approach to address the barriers these two populations face to prepare for entry, participation, and advancement in the workforce. Barriers include low levels of English language and/or academic functioning, limited time for instruction or scheduling conflicts because of work commitments, childcare and transportation issues, and low levels of digital literacy.

Website Link: [Portland Adult Education](#)

Use of Evidence

Total funds being used for evidence-based interventions (if applicable): N/A

Evidence base for the interventions N/A

Is the program evaluation being used? N/A

If program evaluation being used, evaluation Description: N/A

Performance Report: The following is the performance matrix created by the County to demonstrate key performance indicators for our jurisdiction's major SLFRF funded projects.

Objective:	Address the barriers to prepare for entry, participation, and advancement in the workforce. Barriers include low levels of English language and/or academic functioning, limited time for instruction or scheduling conflicts because of work commitments, childcare and transportation issues, and low levels of digital literacy.
Activities to achieve objective:	Increase the number of teachers to meet the demand for students seeking enrollment through ESOL and HSDHiset. Increase scholarships.
Expected results:	Data will be collected on the beneficiaries served by the programs
Performance indicator:	Track the Increase in the number of students, the number of instructional hours, number of advising hours, number of intensity hours studied in non-traditional class, number of students with increase in CASAS score. Additional data collection will measure the number of students enrolled in HSDHiSET, the number of students obtained HSDHiSET, the number of students employed or enrolled in College Transitions, workforce training programs, and or postsecondary education.
Target Population or group & Number served:	Two groups in particular have been disproportionately impacted by the current economic and health crises brought on by the pandemic. English language learners and young adults ages 17-28.
Period of Performance:	October 2022- June 30,2024
Partner Organizations or Collaborators:	Portland Adult Education
Mandatory Indicators:	No Mandatory indicators are applicable for this Subcategory activity.

SLFRF Recovery Plan Performance Report 2024 Project Inventory

Project Name: Cumberland County Affordable Housing Preservation	Project Identification Number: 54-54552-6950-30193
Funding amount: \$2,500,000.00	
Project Expenditure Category : 2-Negative Economic Impacts	Sub Category: 215-Long-Term Housing Security Affordable Housing

Project Overview

The chronic underproduction of affordable units has long resulted in market demand far outpacing supply, and the COVID-19 pandemic has only exacerbated this issue for our residents. In response to the immediate needs of the pandemic, Cumberland County created a program titled "Preservation of Affordable Housing." The goal of this project is to assist impacted households and communities in securing long-term housing affordability. This will include the development of new affordable housing units, as well as programs and services to support long-term affordable housing.

Website Link: [Cumberland County](#)

Use of Evidence

Total funds being used for evidence-based interventions (if applicable): N/A

Evidence base for the interventions N/A

Is the program evaluation being used? N/A

If program evaluation being used, evaluation Description: N/A

Performance Report: The following is the performance matrix created by the County to demonstrate key performance indicators for our jurisdiction's major SLFRF funded projects.

Objective:	To address our region's unprecedented affordable housing crisis, amplified by COVID-19, the Cumberland County Preservation of Affordable Housing Program will assist our region in its pursuit to preserve and produce affordable housing and increase opportunities for families and individuals to access decent affordable homes.
Activities to achieve objective:	Preservation of Affordable Housing
Expected results:	Preserve affordable housing.
Performance indicator:	The Program will be targeted towards preserving affordable housing within Cumberland County and the County will work with local partners to identify and then execute pathways to preserving affordable housing. Outcome and measures resulting from the preserving affordable housing will be tracked and include the number of units, and population served.
Target Population or group & Number served:	The project is to assist impacted households and communities with securing long term housing affordability.
Period of Performance:	May2023- December 31, 2026
Partner Organizations or Collaborators:	TBD
Mandatory Indicators:	TBD # of affordable housing units preserved or developed

SLFRF Recovery Plan Performance Report 2024 Project Inventory

Project Name: North Windham Wastewater Treatment System	Project Identification Number: 30178
Funding amount: \$1,530,000.00	
Project Expenditure Category : 5-Infrastructure	Sub Category: 5.1 Centralized Wastewater Treatment

Project Overview

The Municipal Sewer and Water Grant Program aims to provide funding to Cumberland County municipalities to support local sewer and water infrastructure needs. The goal of the County ARPA funding is to support and prioritize projects that provide the greatest public benefit to our community.

In compliance with CWSRF, The Town of Windham will use SLFRF funds to support the creation of a new wastewater collection system, wastewater treatment facility, and effluent disposal system in North Windham. The North Windham wastewater collection and treatment system project will be one of the most important environmental protection projects in the recent history of southern Maine. The project is a once-in-a-lifetime opportunity for the Town of Windham to protect its groundwater and surface water. This was the second highest priority project out of several dozen capital projects on Maine DEP's 2022 Clean Water State Revolving Fund.



Website Link: [Town of Windham](https://www.townofwindham.com)

Use of Evidence

Total funds being used for evidence-based interventions (if applicable): N/A

Evidence base for the interventions: N/A

Is the program evaluation being used? N/A

If program evaluation being used, evaluation Description: N/A

Performance Report: The following is the performance matrix created by the County to demonstrate key performance indicators for our jurisdiction's major SLFRF funded projects.

Objective:	Make necessary investments that address the consequences of deferred maintenance in drinking water systems and removal, management, and treatment of sewage and storm water, along with additional resiliency measures needed to adapt to climate change.
Activities to achieve objective:	creation of a new wastewater collection system, wastewater treatment facility, and effluent disposal system in North Windham
Expected results:	Treat that wastewater to a higher standard than the existing system, this is a critical investment in infrastructure that supports public health, environmental stewardship, community resilience, and economic vitality. These benefits underscore the importance of ongoing infrastructure maintenance and modernization efforts .
Performance indicator:	Improved system reliability, enhanced environmental protection, public health and safety.
Target Population or group & Number served:	The project will benefit the general Public and includes areas that are low income.

Period of Performance:	September 26, 2023- December 31, 2025
Partner Organizations or Collaborators:	The Town of Winhdam, and Portland Water District, and State revolving loan fund.
Mandatory Indicators:	See outlined below data
<i>Median Household Income</i>	\$86,794.00
<i>Lowest Quintile Income</i>	\$29,501.00
<i>Labor</i>	Davis Bacon is being conducted on this project.
<i>NPES Permit Number</i>	ME0091300
<i>Public Water System ID Number</i>	N/A

SLFRF Recovery Plan Performance Report 2024 Project Inventory

Project Name: Habitat for Humanity of Greater Portland- Sunset Avenue	Project Identification Number: 54-54552-6950-30095
Funding amount: \$1,300,000.00	
Project Expenditure Category : 2-Negative Economic Impacts	Sub Category: 215-Long-Term Housing Security Affordable Housing

Project Overview

Challenges in homeownership in Cumberland County have been exacerbated by the Great Recession, pandemic-related material and labor shortages, and an influx of new residents, including remote workers seeking a higher quality of life and increased international immigration. This surge in demand has driven up housing costs, leaving low-income Mainers with higher monthly payments and



fewer opportunities to build generational wealth. In response, Cumberland County has partnered with Habitat for Humanity to build new homes for Mainers earning at or below 60% of the Area Median Income (AMI).

To address the regional homeownership challenges accelerated by the COVID-19 pandemic, Cumberland County is collaborating with Habitat for Humanity of Greater Portland to support affordable housing development. The County is providing funding to purchase land, materials, and cover payroll costs to expedite the housing production timeline and bring more homes to the market quickly and efficiently.

The SLFRF investment will fund the construction of eight energy-efficient, single-family homes for low-income first-time homebuyers. Specifically, Habitat for Humanity will build these homes in South Portland, Maine, and they will be sold to families making at or below 60% of the area median income. Beneficiary data will be collected to document that these homes were sold to families meeting this income threshold. By serving families at this income level, Cumberland County will be addressing Treasury’s designated impacted population.

Website Link: [Habitat for Humanity of Greater Portland](https://www.habitatmaine.org/greater-portland)

Use of Evidence

Total funds being used for evidence-based interventions (if applicable): N/A

Evidence base for the interventions: N/A

Is the program evaluation being used? N/A

If program evaluation being used, evaluation Description: N/A

Performance Report: The following is the performance matrix created by the County to demonstrate key performance indicators for our jurisdiction's major SLFRF funded projects.

Objective:	To address the negative economic impacts of the Public Health Emergency on affordable housing, Cumberland County is assisting its partners with funding to support the development of more affordable housing.
Activities to achieve objective:	Land acquisition and development costs.
Expected results:	Create an additional 8 units of affordable housing.
Performance indicator:	Execution of Purchase, and completion of development.
Target Population or group & Number served:	This project targets households earning at or below 60% of Area Median Income (AMI).
Period of Performance:	July 22, 2022- June 30, 2026.
Partner Organizations or Collaborators:	Habitat for Humanity of Greater Portland
Mandatory Indicators:	8 affordable housing units are developed and preserved through the use of the funding.

SLFRF Recovery Plan Performance Report 2024 Project Inventory

Project Name: City of Portland Lease Payments for Homeless Service Center	Project Identification Number: 30134
Funding amount: \$3,000,000.00	
Project Expenditure Category : 2-Negative Economic Impacts	Sub Category: 216-Long-Term Housing Security Services for Unhoused persons

Project Overview

Cumberland County, by way of funding the center's master lease, will assist the City of Portland in their endeavor to create a new Homeless Service Center, in response to the demand for homeless services. Funding lease payments for the Homeless services center, that is servicing impacted households, populations, or communities as cited in subparagraphs (b)(3)(ii)(A)(11), which include households and individuals who have been disproportionately impacted by the pandemic.



Website Link: [Homeless Service Center](#)

Use of Evidence

Total funds being used for evidence-based interventions (if applicable): N/A

Evidence base for the interventions N/A

Is the program evaluation being used? N/A

If program evaluation being used, evaluation Description: N/A

Performance Report: The following is the performance matrix created by the County to demonstrate key performance indicators for our jurisdiction's major SLFRF funded projects.

Objective:	Provide Long-Term Housing Security Services for Unhoused persons in Cumberland County, while increasing the existing services for unhoused persons in Cumberland County
Activities to achieve objective:	Master lease payments.
Expected results:	To address the negative economic impacts of the public health emergency on our region's homeless population.
Performance indicator:	The Service Center will provide emergency housing, complete wrap-around on-site food, medical, counseling and transit services.
Target Population or group & Number served:	Impacted households, populations, or communities as cited in subparagraphs (b)(3)(ii)(A)(11), which include households and individuals who have been disproportionately impacted by the pandemic.
Period of Performance:	April 29, 2024 - December 31, 2025
Partner Organizations or Collaborators:	City of Portland
Mandatory Indicators:	No Mandatory indicators are applicable for this Subcategory activity.

SLFRF Recovery Plan Performance Report 2024 Project Inventory

Project Name: Cumberland County Rural Affordable Rental Housing Program	Project Identification Number: 54-54552-6950-30197
Funding amount: \$2,000,000.00	
Project Expenditure Category : 2-Negative Economic Impacts	Sub Category: 215-Long-Term Housing Security Affordable Housing

Project Overview

Cumberland County’s efforts to provide affordable housing to our region have been outpaced by a rapid increase in housing demand. Despite regional initiatives, the construction of new affordable housing units has remained stagnant. In 2020, the affordability gap was significant among households earning between 60% and 100% of the median household income, with the majority of the demand coming from low-income households that are housing-cost stressed, meaning they spend more than 30% of their monthly income on housing.

In response to the need for additional affordable housing units to be created within our region Cumberland County has partnered with Maine Housing Authority. The County will provide American Rescue Plan Act funding to MaineHousing for use as forgivable loans for applications accepted by the County. Accepted applications will be forwarded to MaineHousing for underwriting. MaineHousing will only provide the forgivable loans to applications that can be successfully underwritten. MaineHousing is under no obligation to fund projects unless they are approved by MaineHousing in the normal course of business.

The maximum forgivable loan amount is \$150,000 per unit for acquisition rehabilitation projects and \$165,000 per unit for adaptive re-use or new construction units. The maximum total forgivable loan amount is \$1,800,000 per acquisition rehabilitation project and \$1,980,000 per new construction or adaptive reuse project. Applicants must accept a 5.5% interest only, 30-year MaineHousing paying loan if the project cash flow supports paying debt. Funding allocations will be dependent on the quality and quantity of responses.

Website Link: [Cumberland County](#)

Use of Evidence

Total funds being used for evidence-based interventions (if applicable): N/A

Evidence base for the interventions N/A

Is the program evaluation being used? N/A

If program evaluation being used, evaluation Description: N/A

Performance Report: The following is the performance matrix created by the County to demonstrate key performance indicators for our jurisdiction's major SLFRF funded projects.

Objective:	Create more affordable rental housing, and maintain the affordability of the unit long term.
Activities to achieve objective:	acquisition rehabilitation project and new construction or adaptive reuse.
Expected results:	Create additional units of affordable housing.
Performance indicator:	Total number of units brought on line for affordable housing.
Target Population or group & Number served:	80% of Area Median Income
Period of Performance:	May 11, 2023- December 31, 2026
Partner Organizations or Collaborators:	Maine Housing
Mandatory Indicators:	TBD # of affordable housing units preserved or developed

SLFRF Recovery Plan Performance Report 2024 Project Inventory

Project Name: Emergency Assistance Funding for unsheltered	Project Identification Number: 54551-6950-30130
Funding amount: \$94,000.00	
Project Expenditure Category: 2-Negative Economic Impacts	Sub Category: 237-Economic Impact Assistance Other

Project Overview

The population of people experiencing homelessness grows each month in Greater Portland. COVID-19 has limited the capacity of the local shelters and has forced the City of Portland and other organizations to provide emergency shelter for people in hotels across the county. Outside of Portland Cumberland County lacks transportation, social services and general support needed to help those experiencing homelessness. Funding is being used as capacity building and seed funding.

In connection with the Public Health Manager, the City of Portland and community-based organizations, funding was directed towards meeting the basic needs of those in emergency shelter. These financial supports encompass multiple aspects of basic daily living such as: transportation to meet basic needs; supplies for families to keep children safe and healthy, and volunteer and donation management to address other gaps in basic needs with community support.

Website Link: N/A

Use of Evidence

Total funds being used for evidence-based interventions (if applicable): N/A

Evidence base for the interventions N/A

Is the program evaluation being used? N/A

If program evaluation being used, evaluation Description: N/A

Performance Report: The following is the performance matrix created by the County to demonstrate key performance indicators for our jurisdiction's major SLFRF funded projects.

Objective:	Direct funds to support building capacity and providing support for basic needs of the region's homeless population.
Activities to achieve objective:	The Commissioners approved 94,000 in ARPA funds for the creation of a transportation plan, bus passes and baby supplies such as diapers and car seats, for individuals and families experiencing homelessness
Expected results:	Households that are experiencing homelessness will have increased access to basic needs.
Performance indicator:	Increased number of households benefited from the funding.
Target Population or group & Number served:	The County Public Health department has worked with local partners to provide 119 Low Income Families with Car seats for Infant aged children. Additionally with these funds 996 Low Income unoused Families received direct transportation services, and another 1000+ Low Income unoused families received bus passes.
Period of Performance:	February 15, 2022- December 31, 2024.
Partner Organizations or Collaborators:	Maine Health, Regional Transportation, and Preble Street.
Mandatory Indicators:	No Mandatory indicators are applicable for this Subcategory activity.

SLFRF Recovery Plan Performance Report 2024 Project Inventory

Project Name: Habitat for Humanity of Greater Portland Nature's Way Standish	Project Identification Number: 54-54552-6950-30132
Funding amount: \$1,300,000.00	
Project Expenditure Category: 2-Negative Economic Impacts	Sub Category: 215-Long-Term Housing Security Affordable Housing

Project Overview

Challenges in homeownership in Cumberland County have been exacerbated by the Great Recession, pandemic-related material and labor shortages, and a sudden influx of new residents due to an increase in remote workers seeking a higher quality of life and increased international immigration. This surge in demand has driven up housing costs, leaving low-income Mainers with higher monthly payments and fewer opportunities to build generational wealth. In response, Cumberland County has partnered with Habitat for Humanity to build new homes for Mainers earning at or below 60% of the Area Median Income (AMI).

To address the regional homeownership challenges accelerated by the COVID-19 pandemic, Cumberland County is collaborating with Habitat for Humanity of Greater Portland to support affordable housing development. The County is providing funding to purchase land, materials, and cover payroll costs to expedite the housing production timeline and bring more homes to the market quickly and efficiently.

The funding will directly result in the construction of 12 new homes, reducing the wait time for these homes by supporting costs associated with labor, materials, and land. Additionally, by supporting this project, the County has created an opportunity to assist homeowners at 60% of the AMI, rather than the traditional 85% AMI. This initiative will increase equity and the supply of safe housing for low-income families disproportionately affected by the pandemic.

Website Link: [Habitat for Humanity of Greater Portland](https://www.habitat.org/ma/greater-portland)

Use of Evidence

Total funds being used for evidence-based interventions (if applicable): N/A

Evidence base for the interventions N/A

Is the program evaluation being used? N/A

If program evaluation being used, evaluation Description: N/A

Performance Report: The following is the performance matrix created by the County to demonstrate key performance indicators for our jurisdiction's major SLFRF funded projects.

Objective:	To address the negative economic impacts of the Public Health Emergency on affordable housing, Cumberland County is assisting its partners with funding to support the development of more affordable housing.
Activities to achieve objective:	Land acquisition and development costs.
Expected results:	Create an additional 12 units of affordable housing.
Performance indicator:	Execution of Purchase, and completion of development.
Target Population or group & Number served:	This project targets households earning at or below 60% of Area Median Income (AMI).
Period of Performance:	July 22, 2022- June 30, 2026.
Partner Organizations or Collaborators:	Habitat for Humanity of Greater Portland
Mandatory Indicators:	12 affordable housing units are developed and preserved through the use of the funding.

SLFRF Recovery Plan Performance Report 2024 Project Inventory

Project Name: Tedford Housing Family Shelter Apartments	Project Identification Number: 54-54552-30191
Funding amount: \$175,000.00	
Project Expenditure Category: 2-Negative Economic Impacts	Sub Category: 216-Long-Term Housing Security Services for Unhoused persons

Project Overview

The COVID-19 pandemic exacerbated existing issues within the homelessness crisis in Maine, as it did in many other regions globally. Addressing the homelessness crisis in Maine during and after the COVID-19 pandemic requires a multi-faceted approach that includes providing affordable housing, increasing access to supportive services, addressing economic inequality, and implementing public health measures to protect the most vulnerable populations. In partnership with Tedford Housing, Cumberland County will support the creation of new family units to be built for homeless families seeking shelter.

The Tedford Housing Family Shelter apartments will replace an existing emergency housing facility. The replacement will allow for the growth needed within this area and also provide apartments for families compared to the existing congregate setting. Services will directly address the disproportionate impact of the pandemic and potential future public health crises on the highly vulnerable population of people experiencing or at-risk of homelessness. The ARPA Funding will support only the portion of the project that will build 10-family apartment-style units.

Website Link: [Tedford Housing](#)

Use of Evidence

Total funds being used for evidence-based interventions (if applicable): N/A

Evidence base for the interventions N/A

Is the program evaluation being used? N/A

If program evaluation being used, evaluation Description: N/A

Performance Report: The following is the performance matrix created by the County to demonstrate key performance indicators for our jurisdiction's major SLFRF funded projects.

Objective:	Provide Long-Term Housing Security Services for Unhoused persons in Cumberland County, while increasing the existing services for unhoused persons in Cumberland County
Activities to achieve objective:	Construction and Development of the portion of the project that will build 10 family apartment style units.
Expected results:	To address the negative economic impacts of the public health emergency on our region's homeless population.
Performance indicator:	Cumberland County will collect data on the populations being served and the outcome of the project.
Target Population or group & Number served:	The Population to be served by these funds are those Impacted households that are both disproportionately impacted by Covid19 and those that have experienced increased food or housing insecurity.
Period of Performance:	October 2022- December 31, 2026.
Partner Organizations or Collaborators:	Tedford Housing.
Mandatory Indicators:	No Mandatory indicators are applicable for this Subcategory activity.

SLFRF Recovery Plan Performance Report 2024 Project Inventory

Project Name: County Public Health Office Funding amount: \$700,000.00	Project Identification Number: 54-54551-6950-21001
Project Expenditure Category: 3-Public Health-Negative Economic Impact Public Sector Capacity	Sub Category: 31-Public Sector Workforce Payroll and Benefits for Public Health Public Safety or Human Services Workers

Project Overview

In response to COVID-19, Cumberland County acknowledged the need to increase the County’s Public Health Safety and thereby establish capacity to do so. This resulted in the creation of a County Public Health Office, which provides regional Public Health support to local Towns and Municipalities. This program began in November of 2022 and will continue under this program until December 31, 2024. Expenses support Cumberland County’s Public Health capacity and workforce, including: payroll costs and covered benefits for employees of the Public Health Department to the extent that the employee’s time is spent mitigating or responding to the COVID–19 public health emergency; (2) Payroll, covered benefit, and other costs associated with programs or services to support the public sector workforce.

Website Link: [Public Health Department](#)

Use of Evidence

Total funds being used for evidence-based interventions (if applicable): N/A

Evidence base for the interventions N/A

Is the program evaluation being used? N/A

If program evaluation being used, evaluation Description: N/A

Performance Report: The following is the performance matrix created by the County to demonstrate key performance indicators for our jurisdiction's major SLFRF funded projects.

Objective:	Address health inequity, create a framework to collect data, engage with the community around current efforts, gaps, and need strategies, and choose goals and strategies to be prioritized for implementation over the next 4 years.
Activities to achieve objective:	payroll costs and covered benefits for employees of the Public Health Department to the extent that the employee's time is spent mitigating or responding to the COVID-19 public health emergency; (2) Payroll, covered benefit, and other costs associated with programs or services to support the public sector workforce.
Expected results:	Provided regional Public Health support to local Towns and Municipalities.
Performance indicator:	All the work currently being done by the public health office associated with COVID-19 and its effects on our residents is tracked weekly and a detail summary is submitted quarterly. These items outline the billable hours and work completed by the Public Health Staff and its relationship to the population being served
Target Population or group & Number served:	General Public
Period of Performance:	November 2022- December 30, 2024.
Partner Organizations or Collaborators:	N/A
Mandatory Indicators:	No Mandatory indicators are applicable for this Subcategory activity.

SLFRF Recovery Plan Performance Report 2024 Project Inventory

Project Name: Lakes Region Homeless Service center initiative	Project Identification Number: 54-54552-30134
Funding amount: \$650,000.00	
Project Expenditure Category: 2-Negative Economic Impacts	Sub Category: 216-Long-Term Housing Security Services for Unhoused persons

Project Overview

The COVID-19 pandemic exacerbated existing issues within the homelessness crisis in Maine, as it did in many other regions globally. Addressing the homelessness crisis in Maine during and after the COVID-19 pandemic requires a multi-faceted approach that includes increasing access to supportive services. Cumberland County has launched the Lakes Region Homeless Service Center initiative to assess the needs of the rural homeless population and identify ways to provide long-term housing security services. To gain a better understanding of these needs, the County hired a consultant to complete a Lakes Region Homeless Needs study. The study covers the towns of Baldwin, Bridgton, Casco, Gray, Naples, Raymond, Sebago, Standish, and Windham. The consultant, Levine Planning Strategies, collaborated with HSRI and Northstar Planning to create a comprehensive report, which includes the following tasks:

Task 1: Data and Background Review

Conduct an environmental scan to develop an understanding of homelessness in the greater Lakes Region of Maine and an understanding of the services, resources, and housing available and needed by people and families experiencing or at risk of homelessness in the greater Lakes Region. The scan will include the review and analysis of existing data (e.g., Homeless Management Information System, Point-in-Time count, Housing Inventory Count, Census data) and reports obtained from Tedford Housing, Maine Housing, and housing and service providers in the study area.

Task 2: Prepare a Housing Profile of Five Lakes Region Towns

Prepare a town-by-town housing profile of the nine towns identified. This profile will include details on the quantity and type of housing available in each community and the affordability of existing housing stock. Data on short-term rentals, housing quality, mobile homes and demographic characteristics of current residents will also be provided if available. This work will be based on generally available data from the U.S. Census, local comprehensive plans, and Maine Housing. Additional data from communities and service providers, if available, will also be utilized in this housing profile task. Any information on individuals experiencing homelessness in these towns will be included in this data, if available from local sources.

Task 3: Stakeholder Interviews

Conduct approximately between 15 to 20 interviews with housing and service providers and other stakeholders to understand service and housing needs and preferences for an approach for the provision of services and housing within the greater Lakes Region. Stakeholder interviews will be conducted in person or by phone or video conference, as appropriate, and may be conducted with individuals or small groups. Conduct up to two focus groups with people experiencing homelessness or at risk of homelessness to understand their needs and preferences for housing and support services. Conduct up to two community listening sessions to understand housing and service needs in the greater Lakes Region. The consultant will include stakeholders from the greater Lakes Region, including the towns of Baldwin, Casco, Naples, Raymond, Sebago, plus Standish, Windham, and Bridgton. The consultant will work closely with the County and Tedford Housing to identify the stakeholders to be interviewed and potential locations for the focus groups and community listening sessions.

Task 4: Needs Assessment

Based on likely demographics of people experiencing or at risk of homelessness in the study area, determine specific needs of the population, likelihood of receiving services elsewhere, and potential need within the study area for homeless services. The consultant will also complete a housing needs assessment of the greater Lakes Region towns, with a focus on the needs of those experiencing, or at risk of experiencing homelessness. The information will be provided for low- income households, senior citizens and disabled residents, as data is available.

Task 5: Complementary Services

Outline existing and desired complementary components to a strategy, including supportive housing and permanent rental options and on-going supportive services for people transitioning out of the service center.

Task 6: Siting and Land Use Analysis

Based on identified needs for homeless and homeless prevention services, evaluate potential locations for service center or centers. Explore zoning and other land use restrictions to three potential sites for homeless services. Outline potential changes that would be needed to make these locations feasible. Explore other potential barriers to development of these facilities, including community impact, environmental factors, accessibility, and existence of complementary services. If needed, outline order-of-magnitude costs to acquire development rights to preferred sites(s) and construct facility/facilities. Outline order-of-magnitude operating costs.

Task 7: Present Recommendations

Present initial recommendations for implementation steps based on the findings of the study. Public meetings or presentations to Cumberland County and individual towns will occur prior to issuing a final report.

Task 8: Final Report

Develop final report outlining work in the study and recommendations for next steps for Cumberland County and partners. The consultant will produce actionable recommendations

for addressing gaps and needs and that can be used to inform the development of service center or centers in the greater Lakes Region in Maine.

Website Link: [Cumberland County](#)

Use of Evidence

Total funds being used for evidence-based interventions (if applicable): N/A

Performance Report: The following is the performance matrix created by the County to demonstrate key performance indicators for our jurisdiction's major SLFRF funded projects.

Objective:	Increase access to long- term housing security services for unhoused persons in Cumberland County.
Activities to achieve objective:	Completion of the Lakes Region Study, and implementation of said determination steps.
Expected results:	Cumberland County will determine means and measures to support access to supportive services that are needed in the lakes region.
Performance indicator:	Outcomes of the study and thereby activities implemented for said outcomes.
Target Population or group & Number served:	Disproportionately impacted households.
Period of Performance:	October 2022- December 31, 2026.
Partner Organizations or Collaborators:	Jeff Levine of Levine Planning Strategies, HSRI and Northstar Planning.
Mandatory Indicators:	No Mandatory indicators are applicable for this Subcategory activity.

SLFRF Recovery Plan Performance Report 2024 Project Inventory

Project Name: Avesta Meadowview II Funding amount: \$250,000.00	Project Identification Number: 54-54552-6950-30103
Project Expenditure Category: 2-Negative Economic Impacts	Sub Category: 215-Long-Term Housing Security Affordable Housing

Project Overview

The enduring underproduction of affordable units in the region has created a market demand that far outpaces supply. The COVID-19 pandemic has only exacerbated this issue for residents of Cumberland County. Many community members lost jobs at the peak of the pandemic. Our heaviest hit sectors were those associated with our primary rental market and included food preparation, serving, and personal care.



To address the negative economic impacts of the Public Health Emergency, Avesta Housing will acquire and develop a vacant property into 27 Units of Affordable Housing in Gray, Maine.

Cumberland County’s goal of supporting these projects is to help mitigate rising costs of housing within the local market that have been exacerbated by the COVID-19 pandemic. Initial efforts to infuse this one-time funding have directed funds towards rental housing, and increasing the production of affordable long-term housing.

The projects all will use SLFRF award for land acquisition cost to support the development of 27 affordable housing units. These funds will also be used as leveraging dollars to support the project alongside funding from the Low-Income Tax Credit Housing Program. Projects will remain affordable in perpetuity for a 45-year term. Rent will be reserved for households earning at or below 50% and 60% of Area Median Income (AMI).

Website Link: [Avesta Housing](#)

Use of Evidence

Total funds being used for evidence-based interventions (if applicable): N/A

Evidence base for the interventions: N/A

Is the program evaluation being used? N/A

If program evaluation being used, evaluation Description: N/A

Performance Report: The following is the performance matrix created by the County to demonstrate key performance indicators for our jurisdiction's major SLFRF funded projects.

Objective:	To address the negative economic impacts of the Public Health Emergency Avesta Housing will acquire and develop a vacant property into 27 Units of Affordable Housing in Gray Maine
Activities to achieve objective:	Land acquisition.
Expected results:	Create an additional 27 units of affordable housing.
Performance indicator:	Execution of Purchase, LARUA, and completion of development.
Target Population or group & Number served:	This project targets households earning at or below 50% and 60% of Area Median Income (AMI).
Period of Performance:	May 23, 2022- December 31, 2024.
Partner Organizations or Collaborators:	Avesta Housing
Mandatory Indicators:	27 affordable housing units preserved or developed

SLFRF Recovery Plan Performance Report 2024 Project Inventory

Project Name: Avesta Seavey Street Funding amount: \$350,000.00	Project Identification Number: 54-54552-6950-30101
Project Expenditure Category: 2-Negative Economic Impacts	Sub Category: 215-Long-Term Housing Security Affordable Housing

Project Overview

Chronic underproduction of affordable units, has long brought to a market demand that far outpaces supply COVID-19 has only exacerbated this issue for our residents. To meet immediate pandemic response Cumberland County is partnering with affordable housing developers Avesta Housing to increase supply of affordable housing in Cumberland County.



The project will use SLFRF funds to acquire land that will then be developed into 60 Units of Affordable Housing in Westbrook Maine. These units will be constructed using Low Income Tax Credits and be income restricted to beneficiaries that are deemed impacted by COVID-19.

Cumberland County’s goal of supporting these projects is to help mitigate rising costs of housing within the local market that have been exacerbated by the COVID-19 pandemic. Initial efforts to infuse this one-time funding have directed funds towards rental housing, and increasing the production of affordable long-term housing.

Website Link: [Avesta Housing](#)

Use of Evidence

Total funds being used for evidence-based interventions (if applicable): N/A

Evidence base for the interventions N/A

Is the program evaluation being used? N/A

If program evaluation being used, evaluation Description: N/A

Performance Report: The following is the performance matrix created by the County to demonstrate key performance indicators for our jurisdiction's major SLFRF funded projects.

Objective:	Increase the number of units in our region that create long term housing affordability.
Activities to achieve objective:	Land acquisition.
Expected results:	Create an additional 60 units of affordable housing.
Performance indicator:	Execution of Purchase, LARUA, and completion of development.
Target Population or group & Number served:	This project targets households earning at or below 50% and 60% of Area Median Income (AMI).
Period of Performance:	May 23, 2022- December 31, 2024.
Partner Organizations or Collaborators:	Avesta Housing
Mandatory Indicators:	60 affordable housing units preserved or developed

SLFRF Recovery Plan Performance Report 2024 Project Inventory

Project Name: Avesta Village Commons Funding amount: \$350,000.00	Project Identification Number: 54552-6950-30105
Project Expenditure Category: 2-Negative Economic Impacts	Sub Category: 215-Long-Term Housing Security Affordable Housing

Project Overview

Chronic underproduction of affordable units, has long brought to a market demand that far outpaces supply. COVID-19 has only exacerbated this issue for our residents. To meet immediate pandemic response, Cumberland County is partnering with affordable housing developers Avesta Housing to increase supply of affordable housing in Cumberland County.



Avesta Housing is a nonprofit affordable housing developer that used ARPA funds to secure land, and to build 31 units of affordable senior housing in Scarborough Maine. The units will be restricted to older adults, and all units will be affordable, reserved for individuals or couples earning less than or equal to 60 of AMI. A further 19 of these units will be set aside for individuals or couples earning less than or equal to 50 of AMI.

All utilities are included in the rent helping to facilitate affordability by reducing the burden of housing expenses The units will be income and rent restricted for a period of 45 years, per the terms of Maine Housing financing, however, as is consistent with Avesta's mission, the organization intends to maintain the affordability of this property in perpetuity, well beyond the required period.

Website Link: [Avesta](#)

Use of Evidence

Total funds being used for evidence-based interventions (if applicable): N/A

Evidence base for the interventions N/A

Is the program evaluation being used? N/A

If program evaluation being used, evaluation Description: N/A

Performance Report: The following is the performance matrix created by the County to demonstrate key performance indicators for our jurisdiction's major SLFRF funded projects.

Objective:	Increase the number of units in our region that create long-term housing affordability.
Activities to achieve objective:	Land acquisition.
Expected results:	Create an additional 31 units of affordable housing.
Performance indicator:	Execution of Purchase, LARUA, and completion of development.
Target Population or group & Number served:	This project targets households earning at or below 50% and 60% of Area Median Income (AMI).
Period of Performance:	May 23, 2022- December 31, 2024.
Partner Organizations or Collaborators:	Avesta Housing
Mandatory Indicators:	31 affordable housing units preserved or developed

SLFRF Recovery Plan Performance Report 2024 Project Inventory

Project Name: County Recruiter Funding amount: \$796,809.96	Project Identification Number: 54-54552-6950-21024
Project Expenditure Category: 3-Public Health-Negative Economic Impact Public Sector Capacity	Sub Category: 32-Public Sector Workforce Rehiring Public Sector Staff

Project Overview

In November 2021, the County hired a full-time personnel Recruiter, whose focus has been updating and modernizing the County’s current recruitment efforts, application processes, candidate sourcing methods, social media platforms, hiring practices and retention incentives. The initial focus was on corrections officers. Through a temporary Memorandum of Agreement with the National Correctional Employees Union, a partnership was created and the recruiter works with a corrections officer two days per week in an attempt to fill corrections officer vacancies.

The recruiter has been successful at hiring new employees; however, the County is struggling to retain employees in the positions most impacted by COVID-19. The recruiters will continue to focus on filling positions with an eye toward mitigating pandemic-related barriers to hiring.

Website Link: [Cumberland County](#)

Use of Evidence

Total funds being used for evidence-based interventions (if applicable): N/A

Evidence base for the interventions N/A

Is the program evaluation being used? N/A

If program evaluation being used, evaluation Description: N/A

Performance Report: The following is the performance matrix created by the County to demonstrate key performance indicators for our jurisdiction's major SLFRF funded projects.

Objective:	Recruit and retain more employees. Increase recruitment efforts which includes using new methods such as job target, Jazz HR and other platforms to target new employees. Reduce harm from the public health emergency of the general public, in ways that increase the number of services, access and opportunities offered by the County.
Activities to achieve objective:	Payroll costs and covered benefits for employees
Expected results:	Cumberland County creates a new position with the sole focus of recruiting and retaining employees. This position will also identify steps and measures needed to be taken to address the County's employment needs. This includes establishing policies, processes, means and methods not used by the County before.
Performance indicator:	Positive data on employee retention and hiring.
Target Population or group & Number served:	General Public
Period of Performance:	November 2021- December 30, 2024.
Partner Organizations or Collaborators:	N/A
Mandatory Indicators:	No Mandatory indicators are applicable for this Subcategory activity.

SLFRF Recovery Plan Performance Report 2024 Project Inventory

Project Name: Keeping Cumberland County Warm Funding amount: \$60,791.28	Project Identification Number: 54-54551-6950-30189
Project Expenditure Category : 2-Negative Economic Impacts	Sub Category: 22-Household Assistance Rent Mortgage and Utility Aid

Project Overview

Heating assistance is a fundamental element of health and well-being, self-sufficiency, and economic mobility. Families struggling due to hardships caused by COVID-19 are at greater risk for energy insecurity. With more than 60 percent of homes reliant on heating oil, compared to 4 percent nationally and between 24-42 percent elsewhere in New England, Maine is the most heating oil dependent state in the country. The New England electrical grid, which supplies power to a majority of Maine, is also over-reliant on natural gas-generated electricity.



This makes Maine distinctly vulnerable to the increased prices and volatility the global fossil fuel market is now experiencing. Cumberland County recognizing these factors are directly contributing to a grim winter forecast for low-income families who face impossible choices among essential needs such as food, heat, and medicine.

To address these another negative economic impacts of the pandemic on households in our community Cumberland County created the Keeping Cumberland County Warm Program. Cumberland County Partnered with 25 Local General Assistance departments in the County to provide heating assistance to households whose income was above the GA & ILHEAP Program requirements but under the SLFRF income guidelines.

Website Link: [Cumberland County](https://www.cumberlandcountymaine.gov/)

Use of Evidence

Total funds being used for evidence-based interventions (if applicable): N/A

Evidence base for the interventions N/A

Is the program evaluation being used? N/A

If program evaluation being used, evaluation Description: N/A

Performance Report: The following is the performance matrix created by the County to demonstrate key performance indicators for our jurisdiction's major SLFRF funded projects.

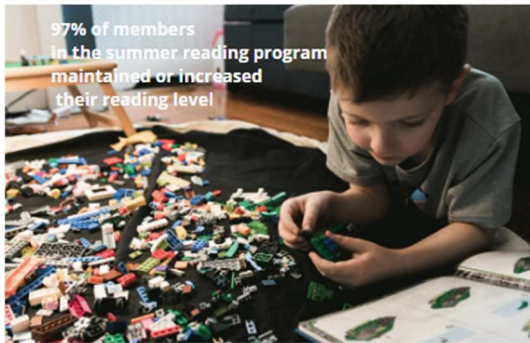
Objective:	Address the negative economic impacts of the public health emergency through the Heating assistance to households Impacted by COVID-19.
Activities to achieve objective:	Heating Assistance Payments.
Expected results:	Provided additional support households within our region with home heating needs.
Performance indicator:	Number of Households benefited from the Program. A total of 68 households throughout Cumberland County were provided heating assistance during the winter of 2023
Target Population or group & Number served:	These households were either Impact based on their income or self-certified as other population impacted by Covid19.
Period of Performance:	January 01, 2023- April 15, 2023.
Partner Organizations or Collaborators:	Cumberland County Partnered with 25 Local General Assistance departments in the County to provide heating assistance to households whose income was above the GA & ILHEAP Program requirements but under the SLFRF income guidelines
Mandatory Indicators:	No Mandatory indicators are applicable for this Subcategory activity.

SLFRF Recovery Plan Performance Report 2024 Project Inventory

Project Name: Learning Recovery Funding amount: \$140,000.00	Project Identification Number: 54-54552-6950-30069
Project Expenditure Category: 2-Negative Economic Impacts	Sub Category: 225-Addressing Educational Disparities Academic Social and Emotional Services

Project Overview

The COVID-19 pandemic exacerbated issues already present in our community – specifically a widening academic achievement gap in core subjects like reading and math. Research shows that poverty is a key risk factor for poor academic outcomes and students from low-income families have been disproportionately affected by the pandemic. Poor access to quality expanded learning opportunities and high cost of affordable enrichment programs contribute to the widening academic achievement gap. According to the Afterschool Alliance, for every child in an afterschool program in our state, there are five waiting to get into one. In 2020, there were nearly 40,000 children in Maine who were alone and unsupervised after school.



Cumberland County has awarded BGCSM with grant funding to support its Learning Recovery program. Funding from this grant will provide resources to accelerate efforts to re-engage pre-COVID members and expand our membership to reach more students in more communities.

With the overarching goal to return to pre-COVID daily attendance numbers. Funds will also provide an additional resource to enhance our learning recovery efforts and high-quality expanding learning opportunities for all ages.

Website Link: [Boys & Girls Club](#)

Use of Evidence

Total funds being used for evidence-based interventions (if applicable): N/A

Evidence base for the interventions: N/A

Is the program evaluation being used? N/A

If program evaluation being used, evaluation Description: N/A

Performance Report: The following is the performance matrix created by the County to demonstrate key performance indicators for our jurisdiction's major SLFRF funded projects.

Objective:	Increase access to out of school programs disproportionately and impacted students within our region. Provide funding to support enhancing and providing high quality tutoring at the club for all children to access and use. Provide funding to support transportation to and from the club. Track using existing software the increase number of members, the number of members using the transportation services and tutoring. Additional outcomes will include data on income, and effectiveness of the tutoring implemented.
Activities to achieve objective:	Marketing, IT Management and software, and transportation expenses.
Expected results:	Return to pre-COVID daily attendance numbers. Funds will also provide an additional resource to enhance our learning recovery efforts and high-quality expanding learning opportunities for all ages.
Performance indicator:	Number of re-engage pre-COVID members and outcomes of efforts to expand membership to reach more students in more communities.
Target Population or group & Number served:	The project has served: Extremely Low Income persons assisted (<30% AMI) 1844 Low Income persons assisted (30%-50% AMI) 285
Period of Performance:	July 22, 2022- June 30, 2024.
Partner Organizations or Collaborators:	Boys & Girls Clubs of Southern Maine
Mandatory Indicators:	Number of students participating in evidence- based tutoring programs 1844

SLFRF Recovery Plan Performance Report 2024 Project Inventory

Project Name: Oral Health Prevention Funding amount: \$650,000.00	Project Identification Number: 54-54552-6950-30195
Project Expenditure Category: 2-Negative Economic Impacts	Sub Category: 237-Economic Impact Assistance Other

Project Overview



Dental disease is not just about having a nice smile; it is linked to numerous systemic health issues, including diabetes, cardiovascular disease, Alzheimer’s, and preterm/low birth weight babies. It also impacts the community by causing lost work hours, missed school days, chronic pain, and unnecessary ER visits. Prevention and early intervention are crucial solutions to dental disease. However, half of all children in Cumberland County are not receiving any preventative oral health care.

There are about 56,000 children between the ages of 1-18 in Cumberland County, and more than half of them, around 30,000 children, are not getting any preventative dental care. Of these 30,000, about two-thirds have MaineCare or no dental benefits. Having dental insurance does not guarantee regular dental visits or preventative exams and cleanings. The situation worsened due to COVID-19. In Maine, the percentage of children with dental coverage receiving at least one preventative service dropped from 63% in 2019 to 51% in 2021. Despite Cumberland County having more dentists per capita than most Maine counties, many children cannot access regular dental care because most dental offices do not accept MaineCare, and those who qualify often face additional barriers, such as lack of transportation. Consequently, supporting access to oral health care has been identified as a key priority in the Cumberland County Community Health Improvement Plan.

Creating a Stronger Infrastructure for Children’s Preventative Oral Health: Providing preventative oral healthcare in schools is a proven strategy for improving children’s oral health. In Cumberland County, three school districts partner with Greater Portland Health, one with the Maine CDC School Oral Health Program, and a few individual schools with independent practice dental hygienists to provide on-site dental services. Although MaineCare recently increased reimbursement rates for oral health care, making financial sustainability more feasible for organizations accepting MaineCare, it has not yet attracted additional providers. A strong, coordinated network of preventative oral health care does not exist in Cumberland County, leaving many children without care. Strengthening this infrastructure would allow oral health organizations and private dental clinics

to expand services and leverage increased reimbursement rates, creating a more sustainable system with greater capacity to provide care.

Providers like Greater Portland Health and Mainely Teeth could increase patient numbers with the new reimbursement rates but lack the additional equipment and internal processes needed to expand services. The Cumberland County Public Health Department is collaborating with the Children’s Oral Health Network of Maine (COHN) to create a more coordinated and sustainable children’s preventative oral health infrastructure. COHN is a small non-profit organization uniting organizations and individuals across Maine with the vision of ensuring all children grow up free from preventable dental disease. The network fosters collaboration and innovation to ensure effective prevention, education, and treatment tools reach all children in Maine. For the past year, COHN has provided guidance and technical support to the Cumberland County Public Health Department at no charge to support the creation of a strategic plan addressing gaps in oral healthcare identified in the Cumberland County Community Health Improvement Plan. COHN, the only organization in Maine focused on creating a stronger preventative oral health infrastructure, has the expertise, strategic relationships, and technical skills to support the Cumberland County oral health infrastructure project.

The Oral Health Network will create a Public Health Data system to map areas in Cumberland County with the greatest need for preventative oral health services for children K-12. This system will serve as a catalyst to link those in need with preventative services. Once the mapping objective is met, the next step will be to implement infrastructure to provide these services.

Website Link: [COHN](#)

Use of Evidence

Total funds being used for evidence-based interventions (if applicable): N/A

Evidence base for the interventions N/A

Is the program evaluation being used? N/A

If program evaluation being used, evaluation Description: N/A

Performance Report: The following is the performance matrix created by the County to demonstrate key performance indicators for our jurisdiction’s major SLFRF funded projects.

Objective:	Increase access to long- term housing security services for unhoused persons in Cumberland County.
Activities to achieve objective:	<ol style="list-style-type: none"> 1. Create a Standard oral health service 4. Identify existing capacity to project the need based on data. 5. Identify number of students who need a referral to a dental office for treatment


	<p>3. Identify the number of schools that lack an oral health delivery partner</p> <p>Capacity, building capacity to serve all schools to make comprehensive OH services accessible to all students, is what can be known as phase 2, and this part of the project builds off of and is interwoven with Phase 1:</p> <ol style="list-style-type: none"> 1. Develop agreements with the partners to coordinate outreach to the underserved schools 2. Identify the gap in need to project additional staffing and mobile equipment. 3. Identify and purchase equipment 4. Upfront costs of hiring and onboarding. 5. Coordinate outreach to dental practices to identify partners willing to take those restorative referrals.
Expected results:	The Cumberland County Public Health Department is collaborating with the Children’s Oral Health Network of Maine to create a more coordinated and sustainable children’s preventative oral health infrastructure for Cumberland County..
Performance indicator:	Increased access to oral health care.
Target Population or group & Number served:	To identify the response is related and reasonably proportional to the COVID19 Pandemic COHN will: Identify the number of Impacted and disproportionately impacted (low income and other populations) of students that need core services based on a school-by-school projections.
Period of Performance:	August 09,2023- September 30, 2026.
Partner Organizations or Collaborators:	Children's Oral Health Network of Maine
Mandatory Indicators:	No Mandatory indicators are applicable for this Subcategory activity.

SLFRF Recovery Plan Performance Report 2024 Project Inventory

Project Name: Quality Housing Coalition Funding amount: \$30,000.00	Project Identification Number: 30099
Project Expenditure Category: 2-Negative Economic Impacts	Sub Category: 216-Long-Term Housing Security Services for Unhoused persons

Project Overview

To promote housing security, Cumberland County partnered with the Quality Housing Coalition (QHC), a regional nonprofit dedicated to supporting and creating quality housing opportunities for those in need. QHC administers the Project HOME program, a supportive housing tenant management service that collaborates with landlords to rent to tenants who have experienced homelessness and housing insecurity. Project HOME assists landlords by managing all aspects of tenancy, including tenant responsibilities, leasing and move-in details, rental assistance program navigation, and the physical maintenance and repair of the unit. Additionally, Project HOME helps tenants access community resources related to food, healthcare, education, and employment.



SLFRF supported Project HOME through a Risk Mitigation Fund. This Fund covered all verified damages in Project HOME tenancies and their invitees, including but not limited to lost rent, eviction processes, cleaning, plumbing, electrical issues, fire damage, and any other damages that support housing stabilization. The County administered the Fund, and upon receiving a request from Project HOME for payment of damages, which included a description of the damages verified by Project HOME, the County paid the damages either to the landlord or reimbursed Project HOME for the paid damages.

Website Link: [Project HOME](#)

Use of Evidence

Total funds being used for evidence-based interventions (if applicable): N/A

Evidence base for the interventions: N/A

Is the program evaluation being used? N/A

If program evaluation being used, evaluation Description: N/A

Performance Report: The following is the performance matrix created by the County to demonstrate key performance indicators for our jurisdiction's major SLFRF funded projects.

Objective:	Promote housing security.
Activities to achieve objective:	Cover any and all verified damages in Project HOME tenancies and their invitees, including but not limited to lost rent, eviction processes, cleaning, plumbing, electrical, fire, and any other damages that support housing stabilization.
Expected results:	Increase funding for housing support for those in need.
Performance indicator:	Number of Households benefited by the funding. Goal: 15- 30 Households, approximately 75 People Final Accomplishment: 8 households were served
Target Population or group & Number served:	Homeless and or Low Income families and persons.
Period of Performance:	June 21, 2022- June 30, 2023
Partner Organizations or Collaborators:	Quality Housing Coalition
Mandatory Indicators:	No Mandatory indicators are applicable for this Subcategory activity.

SLFRF Recovery Plan Performance Report 2024 Project Inventory

Project Name: Stroudwater Funding amount: \$535,000.00	Project Identification Number: 30043
Project Expenditure Category: 2-Negative Economic Impacts	Sub Category: 215-Long-Term Housing Security Affordable Housing

Project Overview

To address the negative economic impacts of the Public Health Emergency, WHDC will acquire and develop a vacant property into 60 Units of Affordable Housing in Westbrook Maine.



Cumberland County’s goal of supporting these projects is to help mitigate rising costs of housing within the local market that have been exacerbated by the COVID-19 pandemic. Initial efforts to infuse this one-time funding have directed funds towards rental housing, and increasing the production of affordable long-term housing.

The projects all will use SLFRF awards as leveraging dollars to support the project alongside funding from the Low Income Tax Credit Housing Program. Projects will remain affordable in perpetuity for a 40-year term.

Rent will be reserved for households earning at or below 50% and 60% of Area Median Income (AMI).

Website Link: [Westbrook Housing](#)

Use of Evidence

Total funds being used for evidence-based interventions (if applicable): N/A

Evidence base for the interventions N/A

Is the program evaluation being used? N/A

If program evaluation being used, evaluation Description: N/A

Performance Report: The following is the performance matrix created by the County to demonstrate key performance indicators for our jurisdiction's major SLFRF funded projects.

Objective:	To address the negative economic impacts of the Public Health Emergency Westbrook Housing will acquire and develop a vacant property into 60 Units of Affordable Housing in Westbrook, Maine
Activities to achieve objective:	Land acquisition.
Expected results:	Create an additional 60 units of affordable housing.
Performance indicator:	Execution of Purchase, LARUA, and completion of development.
Target Population or group & Number served:	This project targets households earning at or below 50% and 60% of Area Median Income (AMI).
Period of Performance:	July 22, 2022- December 31, 2026.
Partner Organizations or Collaborators:	Westbrook Housing
Mandatory Indicators:	60 affordable housing units preserved or developed

SLFRF Recovery Plan Performance Report 2024 Project Inventory

Project Name: The Stacey M Symbol Apartments Funding amount: \$565,000.00	Project Identification Number: 54-54552-6950-30085
Project Expenditure Category: 2-Negative Economic Impacts	Sub Category: 215-Long-Term Housing Security Affordable Housing

Project Overview

To address the negative economic impacts of the Public Health Emergency WHDC will acquire and develop a vacant property into 55 Units of Affordable Housing in Westbrook Maine.



Cumberland County’s goal of supporting these projects is to help mitigate rising costs of housing within the local market that have been exacerbated by the COVID-19 pandemic. Initial efforts to infuse this one-time funding have directed funds towards rental housing, and increasing the production of affordable long-term housing.

The projects all will use SLFRF awards as leveraging dollars to support the project alongside funding from the Low Income Tax Credit Housing Program. Projects will remain affordable in perpetuity for a 40-year term. Rent will be reserved for households

earning at or below 50% and 60% of Area Median Income (AMI).

Website Link: [Westbrook Housing](#)

Use of Evidence

Total funds being used for evidence-based interventions (if applicable): N/A

Evidence base for the interventions N/A

Is the program evaluation being used? N/A

If program evaluation being used, evaluation Description: N/A

Performance Report: The following is the performance matrix created by the County to demonstrate key performance indicators for our jurisdiction's major SLFRF funded projects.

Objective:	To address the negative economic impacts of the Public Health Emergency Westbrook Housing will acquire and develop a vacant property into 55 Units of Affordable Housing in Westbrook, Maine
Activities to achieve objective:	Land acquisition.
Expected results:	Create an additional 55 units of affordable housing.
Performance indicator:	Execution of Purchase, LARUA, and completion of development.
Target Population or group & Number served:	This project targets households earning at or below 50% and 60% of Area Median Income (AMI).
Period of Performance:	July 22, 2022- December 31, 2026.
Partner Organizations or Collaborators:	Westbrook Housing
Mandatory Indicators:	55 affordable housing units preserved or developed

SLFRF Recovery Plan Performance Report 2024 Project Inventory

Project Name: Cumberland County Jail Staffing Retention Funding amount: \$2,115,984.00	Project Identification Number: 54-54552-6950-21011
Project Expenditure Category : 3-Public Health-Negative Economic Impact Public Sector Capacity	Sub Category: 32-Public Sector Workforce Rehiring Public Sector Staff
Project Overview	
<p>Description: 'The public health emergency, compounded by its negative economic impacts, has had devastating effects on Jail staff and our inmates. At the start of the pandemic, the jail was short 30 Corrections Officers. By the spring of 2021, that shortage had risen to over 60. In addition to a number of other measures taken to attempt to draw in new Corrections Officers, the County implemented the staff retention pay program. With the goal to address the impacts and harm of the pandemic by increasing staffing levels to provide a safer jail environment for the inmate population and jail staff.</p>	
Website Link: N/A	
Use of Evidence	
Total funds being used for evidence-based interventions (if applicable): N/A Evidence base for the interventions N/A Is the program evaluation being used? N/A If program evaluation being used, evaluation Description: N/A	

Performance Report: The following is the performance matrix created by the County to demonstrate key performance indicators for our jurisdiction's major SLFRF funded projects.

Objective:	Increase the number of employees retained at the Jail thereby reducing the harmful impacts of the public health emergency on both staff and jail inmates.
Activities to achieve objective:	Cumberland County will provide Jail staff with additional step increases over a three-year period. These retention incentives equate to less than 10 percent of the rate of base pay for the category of employees and are reasonably proportional to the need to retain employees.
Expected results:	Employee Retention.
Performance indicator:	Positive data on employee retention and hiring.
Target Population or group & Number served:	General Public
Period of Performance:	November 2021- June 30, 2024.
Partner Organizations or Collaborators:	N/A
Mandatory Indicators:	No Mandatory indicators are applicable for this Subcategory activity.

SLFRF Recovery Plan Performance Report 2024 Project Inventory

Project Name: Cross Insurance Arena Retention Pay Funding amount: \$8,679.34	Project Identification Number: 54-54552-6950- 21025
Project Expenditure Category : 3-Public Health-Negative Economic Impact Public Sector Capacity	Sub Category: 32-Public Sector Workforce Rehiring Public Sector Staff

Project Overview

The Cross Insurance Arena is owned by Cumberland County and is used for public events such as sports, and live entertainment, for surrounding communities within our region. The Covid-19 Public Health Emergency created many economic impacts on this industry. However, this project focuses on the severe labor shortage that took place in Southern Maine, particularly in service sector industries and providing support by employee retention. For the Cross Insurance Arena CIA, the labor shortage is most acutely felt in the form of the part time staff typically used for actual events at the arena.

In order to stay competitive with similar venues, and retain and or attract employees, Cumberland County provide CIA with funding to support a rehiring stipend for their event staff, which will gradually step down over the next 3 years. As the ARPA stipend declines, budgeted wage increases will take its place. Retention incentives are less than 10 percent of the rate of base pay for the category of employees and are reasonably proportional to the need to retain employees. Payroll is collected to ensure employees are receiving the additional pay and to document the amount spent each quarter. This is a fixed amount of \$1.00 an hour more for each employee.

Website Link: [Cross Insurance Arena](#)

Use of Evidence

Total funds being used for evidence-based interventions (if applicable): N/A

Evidence base for the interventions: N/A

Is the program evaluation being used? N/A

If program evaluation being used, evaluation Description: N/A

Performance Report: The following is the performance matrix created by the County to demonstrate key performance indicators for our jurisdiction's major SLFRF funded projects.

Objective:	Reduce the harm of the pandemic by retaining employees at the Cross Insurance Arena.
Activities to achieve objective:	payroll costs and covered benefits for employees
Expected results:	Employee Retention.
Performance indicator:	Positive data on employee retention and hiring.
Target Population or group & Number served:	General Public
Period of Performance:	November 2021- June 30, 2023.
Partner Organizations or Collaborators:	N/A
Mandatory Indicators:	No Mandatory indicators are applicable for this Subcategory activity.

SLFRF Recovery Plan Performance Report 2024 Project Inventory

Project Name: Behavioral Public Health Manager Funding amount: 296,338.26	Project Identification Number: 54-54551-5120-6950
Project Expenditure Category : 3-Public Health-Negative Economic Impact Public Sector Capacity	Sub Category: 31-Public Sector Workforce Payroll and Benefits for Public Health Public Safety or Human Services Workers
Project Overview	
<p>In response to COVID-19 Public Health Impacts, Cumberland County will use ARPA funding to hire and maintain a Public Health Behavioral Health Manager position for the first 18 months. The position will take on the current behavioral health-related projects being managed by the Public Health Director and will build upon those efforts to improve coordination and increase resources within the County to prevent and reduce behavioral health-related deaths, like overdose and suicide, and improve well-being.</p>	
Website Link: Public Health Department	
Use of Evidence	
Total funds being used for evidence-based interventions (if applicable): N/A Evidence base for the interventions N/A Is the program evaluation being used? N/A If program evaluation being used, evaluation Description: N/A	

Performance Report: The following is the performance matrix created by the County to demonstrate key performance indicators for our jurisdiction's major SLFRF funded projects.

Objective:	Increase the County's Public Health Safety and capacity of the Public Health Department.
Activities to achieve objective:	Hire Public Health Staff to increase capacity and meet regional needs.
Expected results:	Provided regional Public Health and Behavioral Health support to local Towns and Municipalities.
Performance indicator:	All the work currently being done by the public health office associated with COVID-19 and its effects on our residents is tracked weekly and a detail summary is submitted quarterly. These items outline the billable hours and work completed by the Public Health Staff and its relationship to the population being served
Target Population or group & Number served:	General Public
Period of Performance:	December 06, 2022 – December 31, 2024.
Partner Organizations or Collaborators:	Cumberland County Public Health Department
Mandatory Indicators:	No Mandatory indicators are applicable for this Subcategory activity.

SLFRF Recovery Plan Performance Report 2024 Project Inventory

Project Name: Tri Town Behavioral Health	Project Identification Number: 54551-6950-30129
Funding amount: \$365,000.00	
Project Expenditure Category : 3-Public Health-Negative Economic Impact Public Sector Capacity	Sub Category: 34-Public Sector Capacity Effective Service Delivery

Project Overview

The social isolation, economic devastation and public fear caused by the global pandemic of COVID-19 has exacerbated the nation's mental health and substance use challenges. There has been a rise in anxiety, depression, and suicide rates as well as a rise in drug overdose deaths across the country, Cumberland County, and within the Tri-town area including Falmouth, Cumberland, and Yarmouth.



In Response Cumberland County Public Health has partnered with the Tri Town communities of Falmouth, Cumberland and Yarmouth to create a Behavioral Health Liaison program. The Behavioral Health Liaisons will work with law enforcement for the purpose of co-response, crisis intervention, case follow-up, referrals and connection to services, as well as the police department and community outreach, engagement, and relationship-building activities to increase behavioral health and resiliency, substance use awareness, and suicide awareness and prevention

Cumberland County will provide support to fund the creation of and establish the Tri Town Behavioral Health Liaison position alongside the Towns. This position will use the initial infusion of ARPA funds to then be built into the town's budget, allowing for these ARPA funds to be one time with sustainable funds to follow.

The objective of the program is to reduce the number of cases in which law enforcement is required to exercise protective custody for the purposes of compelling mental health or substance use intervention; to reduce calls requiring police response for mental health or substance use issues, and to increase residents' access to appropriate levels of behavioral health services

Website Link: [Spurwink](#)

Use of Evidence

Total funds being used for evidence-based interventions (if applicable): Yes, See Evaluation below titled Progress Report.

Progress Report

Tri-Town Community Police Liaison Program

Reporting period: January 2024 - May 2024

Submitted by:

Tri-Town Chiefs - Towns of Falmouth, Yarmouth, Cumberland
Angela Blier - Spurwink Services
Lauren Bartlett - Spurwink Services
Brandon Irwin - Cumberland County Public Health

Evaluation overview

The overall purpose of the Community Police Liaison Program evaluation is to demonstrate the effectiveness of the program in addressing unmet behavioral health, substance use disorder, and psychosocial needs of community members that are involved or could be involved with the criminal justice system. This program is a partnership between the towns of Falmouth, Yarmouth, and Cumberland, Maine, Spurwink Services, and the Cumberland County Public Health Department. This 6 month report includes data on a subset of metrics identified in the [Tri-Town Community Police Liaison Program Evaluation Plan \(2022\)](#) intended to be reported on a quarterly or 6-month reporting timeline. The data are organized according to the key evaluation questions derived from overall program goals. More detailed information on the evaluation questions, data of interest, data collection methods, and reporting timelines can all be found in the Evaluation Plan ([link](#)).

Executive summary

The program was implemented, as planned, during the reporting period from January 2024-May 2024. The Community Police Liaison continued to provide services across the Towns of Cumberland, Falmouth, and Yarmouth.

Major accomplishments during this period were deepening relationships between the CRL and officers, which increased adoption of CRL services and connections to people in need (see data below). Major challenges included not having a dedicated vehicle, which makes responding to calls across three towns difficult and slows the process of developing relationships with officers. The CRL also plans to vacate the position in the coming months to become a police officer. Moving forward, the Towns and Spurwink will plan and prepare for the departure of the CRL.

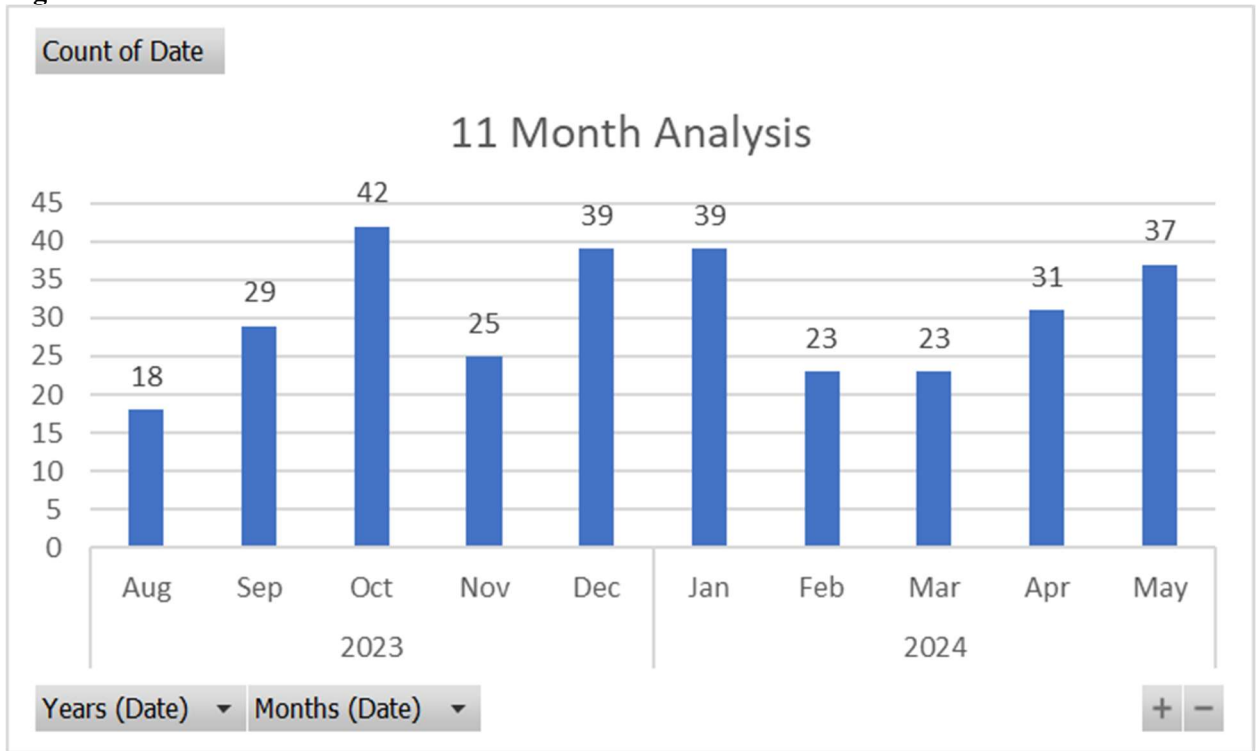
By the numbers*
(Jan '24 - May '24)

The Community Police Liaison made approximately 153 contacts during the 5 month reporting period (June '24 was not included at the time of writing this report due to the ARPA reporting deadline of June 30th, 2024). During the 5 months prior to the current reporting period, the CPL made 151 total contacts.

Definitions

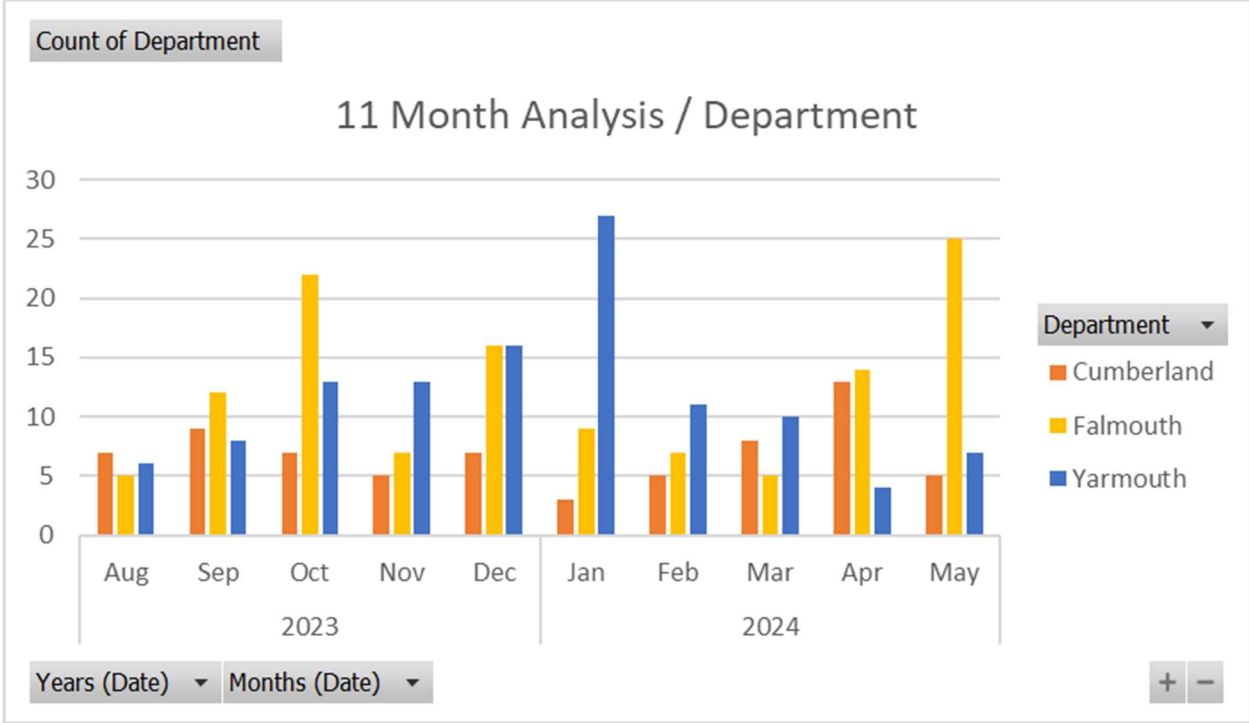
- **Co-response.** A call for service where the CRL responds with an officer.
- **Alternative response.** A call for service where the CRL responds without an officer. (note that alternative response is not currently a pathway in operation within the participating departments, hence the n/a)
- **Follow ups.** A contact made as a result of a referral from an officer or as part of ongoing efforts to connect a previous client with resources.

Figure 1. Total number of calls for service 2023-2024



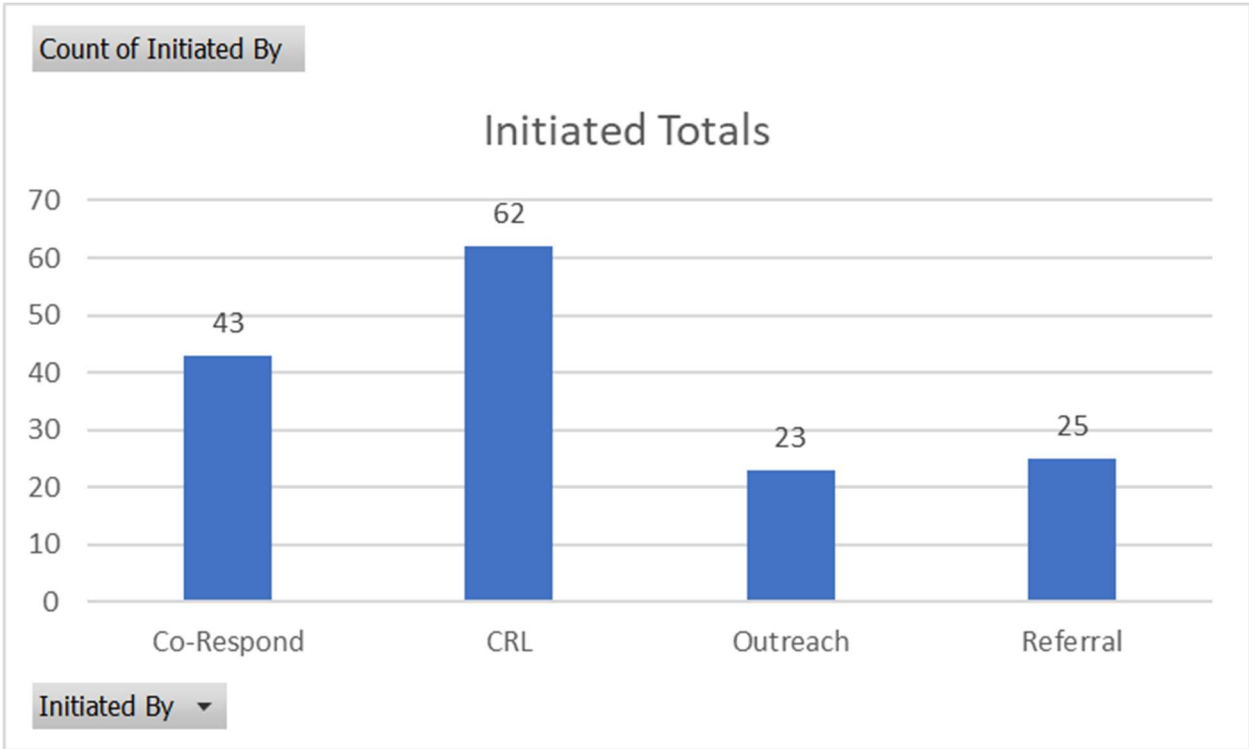
On average, contacts were mostly evenly distributed across Towns, save for a few months in Yarmouth (January) and Falmouth (May; see Figure 2)

Figure 2. Contacts made by month, across Towns 2023-2024



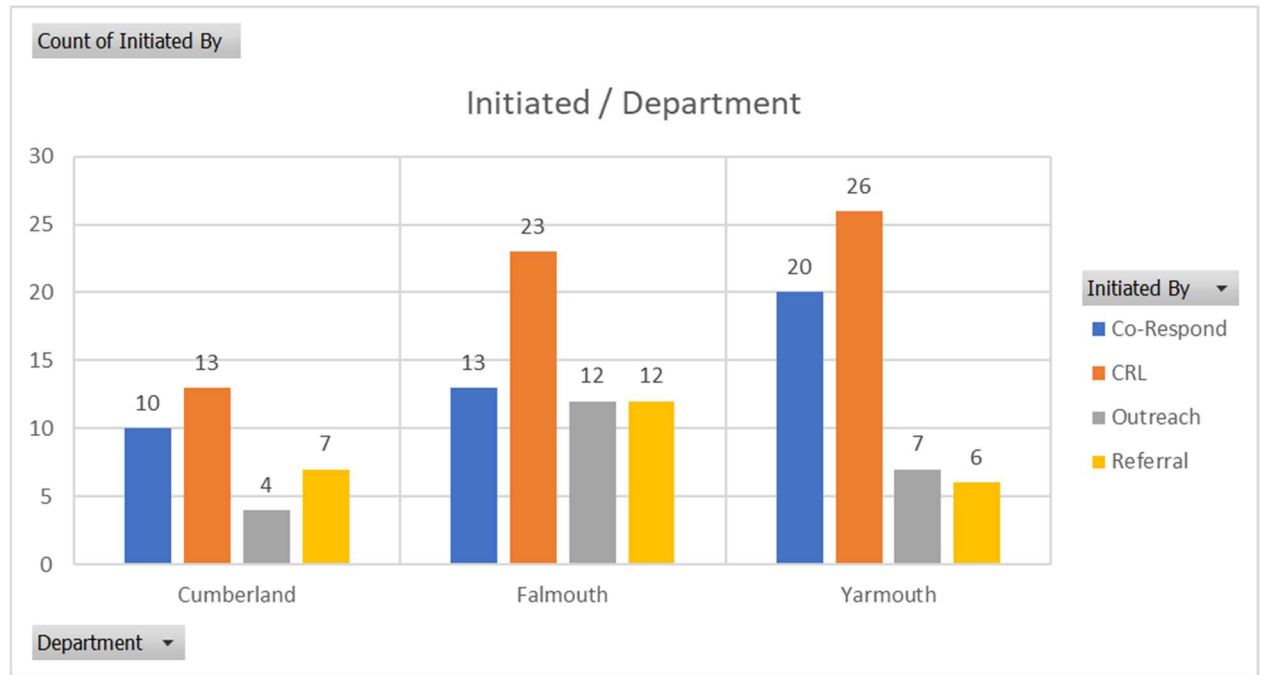
The majority of contacts are made through the co-response and CRL-initiated pathways (see Figure 3)

Figure 3. Pathways to contact with CRL Jan-May 2024.



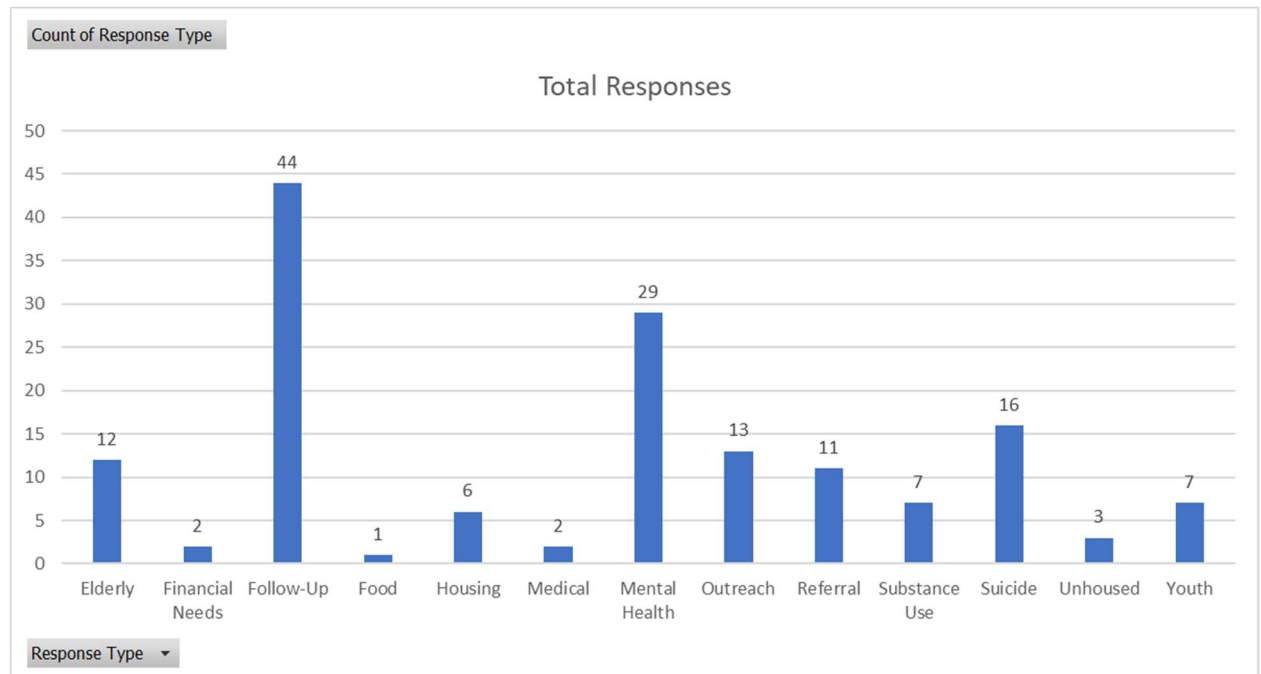
The pattern of pathways to the CRL are fairly consistent across Towns, whereby the co-response and CRL initiated pathways are the highest and outreach and referrals from other entities are lowest (see Figure 4).

Figure 4. Pathways to CRL by Town 2024



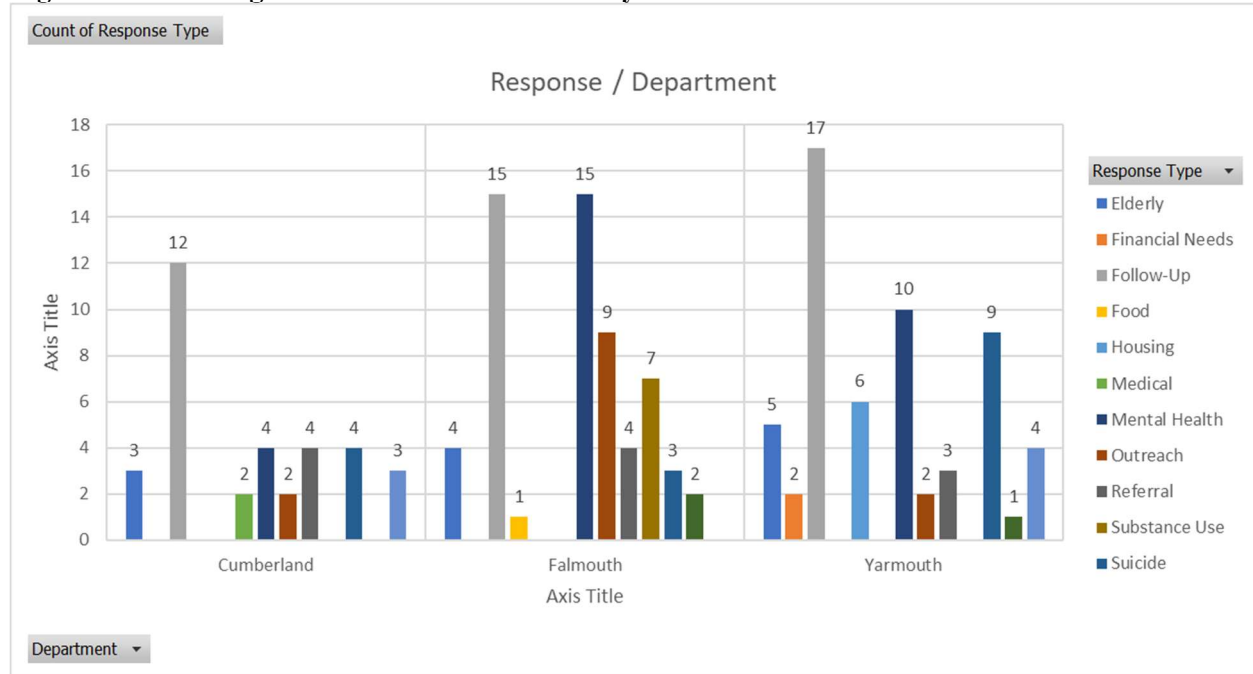
The presenting needs across all calls are generally clustered into mental health and suicide-related needs. Note that, regardless of presenting need, the CRL is conducted 44 follow ups during the reporting period (see Figure 5).

Figure 5. Presenting needs 2024



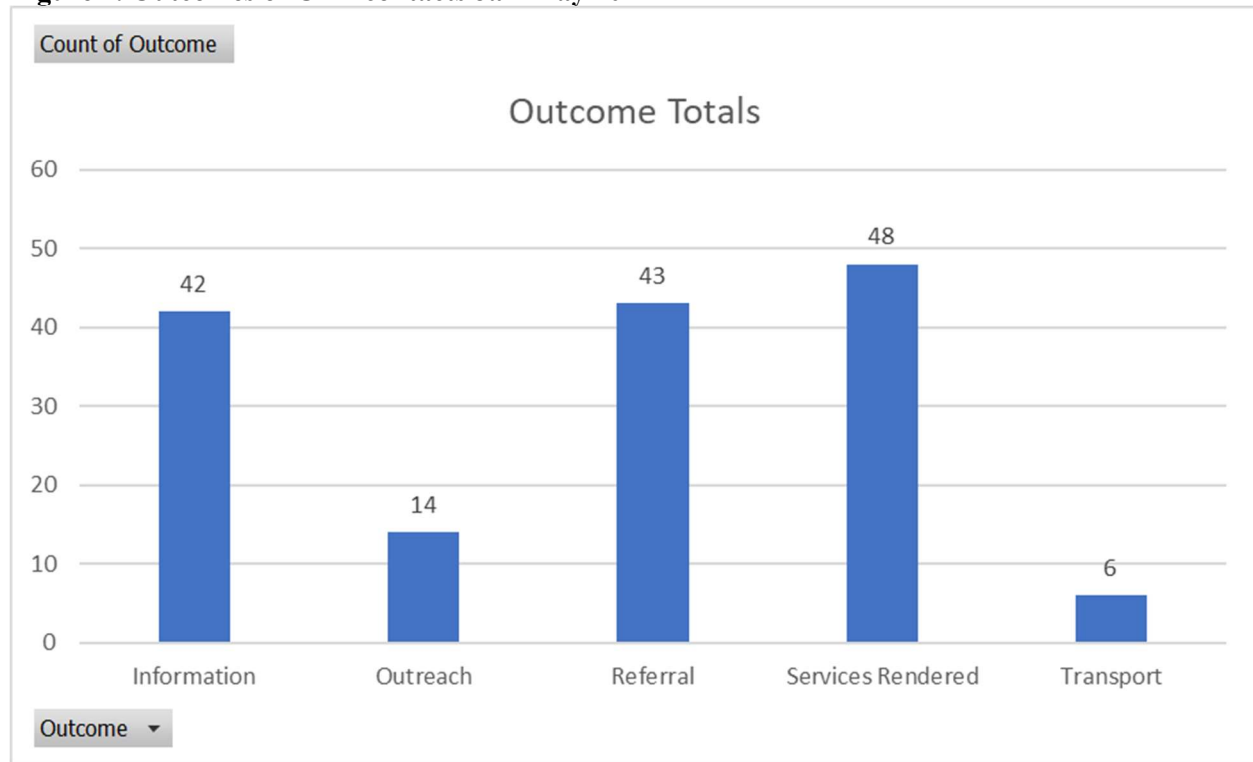
Presenting needs appear evenly and proportionally distributed across Towns, with the exception of substance use, which is clustered entirely within Falmouth (see Figure 6).

Figure 6. Presenting needs across Towns Jan-May 2024



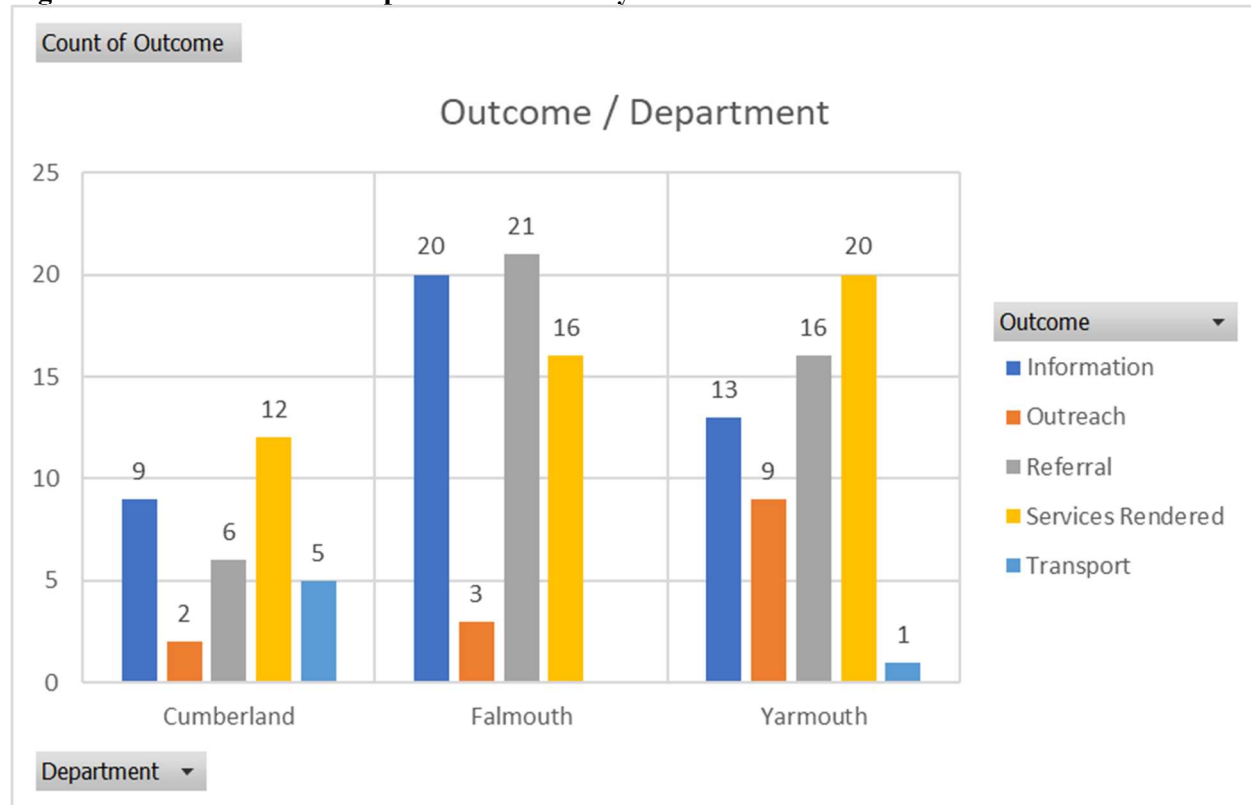
The outcomes of CRL contacts are heavily clustered in Information (given), referrals to other resources and services, and services rendered (see Figure 7).

Figure 7. Outcomes of CRL contacts Jan-May 2024



Outcomes of contacts with CRL are roughly proportionate across Towns, with the exception of Transports in Cumberland. There are also slightly higher outreach outcomes in Yarmouth (see Figure 8).

Figure 8. Outcomes across Departments Jan-May 2024



Police Departments

Department level data that speaks to the impact of the program on key metrics (e.g., # of arrests, diversions, uses of force) is collected every other year, beginning in 2025.

*As this is the first 12-month period of the Tri-Town Community Police Liaison program, these numbers represent the baseline for the program to which data from future reporting periods will be compared.

Major accomplishments

- Busier than the first 6 months, likely indicating that officers utilizing/sending referrals more often
- Towns and CRL continue to distribute Care Kits
- CRL reports feeling more confident in her ability to work with officers and clients
- CRL feels supported by the level and quality of clinical supervision provided through Spurwink and especially in getting support in navigating uncertainty
- Elder woman in Cumberland, 94 yo, abusive partner (manic episode), very co-dependent
 - Got her set up with the GA, APS, and the Rides program
 - Going to transition into assisted living
- CRL has built a strong relationship with Through These Doors
- Building strong relationships in departments has been very helpful
- Water cooler type interactions have been really important in building relationships

Challenges

- Not having dedicated vehicle
- Lots of highs and lows, stretches of very little/high activity
- One person at 3 different sites makes it hard to develop relationships, which in turn makes adoption and utilization of the navigator more difficult
- The CRL will be vacating the position in the next few months to become a police officer

Opportunities & Next steps

- The team should anticipate and plan for the departure of the current CRL, including an exit interview

SLFRF Recovery Plan Performance Report 2024 Project Inventory

Project Name: Bay Bridge Public Water Supply Project	Project Identification Number: 30179
Funding amount: \$1,500,000.00	Sub Category: 5.11 Transmission and Distribution
Project Expenditure Category: 5-Infrastructure	Sub Category: 5.11 Transmission and Distribution

Project Overview

The Municipal Sewer and Water Grant Program aims to provide funding to Cumberland County municipalities to support local sewer and water infrastructure needs. The goal of the County ARPA funding is to support and prioritize projects that provide the greatest public benefit to our community.

Water and sewer infrastructure investments are among the six ways that funds can be used for recovery and to address climate change impacts. Guidance from the U.S. Department of the Treasury identifies drinking water infrastructure projects as eligible if they meet the U.S. Environmental Protection Agency's (EPA) Drinking Water State Revolving Fund (DWSRF) eligibility criteria. All projects must be deemed necessary investments. According to the Treasury, necessary investments are defined as:

1. **Responsive to an identified need:** Projects must achieve or maintain an adequate minimum level of service, which may include a reasonable projection of increased need due to population growth or other factors.
2. **Cost-effective:** The projects must be a cost-effective means of meeting the identified need, taking into account available alternatives.
3. **Sustainable:** For investments in infrastructure that supply drinking water to meet projected population growth, projects must be sustainable over their estimated useful life.

In compliance with the DWSRF criteria, the town of Brunswick will install a new 12" diameter water main from Maplewood Park on Old Bath Road to Bay Bridge Estates, spanning a distance of 11,100 feet. This project will provide a reliable water supply for residents and ensure efficient transmission and distribution from the source.

Website Link: [Town of Brunswick](#)

Use of Evidence

Total funds being used for evidence-based interventions (if applicable): N/A

Evidence base for the interventions: N/A

Is the program evaluation being used? N/A

If program evaluation being used, evaluation Description: N/A

Performance Report: The following is the performance matrix created by the County to demonstrate key performance indicators for our jurisdiction's major SLFRF funded projects.

Objective:	Make necessary investments that address the consequences of deferred maintenance in drinking water systems and removal, management, and treatment of sewage and stormwater, along with additional resiliency measures needed to adapt to climate change.
Activities to achieve objective:	Installation of a new 12" diameter water main from Maplewood Park on Old Bath Road to Bay Bridge Estates, a distance of 11,100 feet.
Expected results:	This project will provide a reliable water supply for residents who are currently not served by a safe supply of potable water, ensuring efficient transmission and distribution from the source. This project will bring a sustainable clean drinking water source and fire protection to a low-income neighborhood. Fire protection is a significant concern in this area. The nearest fire hydrant is approximately two miles away. Through this project, hydrants will be added approximately every 1,000 feet.
Performance indicator:	<p>Percentage Increase in Residents with access to safe potable water: This indicator measures the percentage of residents within Cumberland County municipalities who gain access to safe potable water as a result of funded infrastructure projects. It reflects the program's effectiveness in improving community health and infrastructure resilience.</p> <p>Reduction in Water System Vulnerabilities: This indicator tracks the reduction in vulnerabilities such as leaks, water quality issues, or system failures due to improved infrastructure, ensuring a more resilient water supply system.</p>
Target Population or group & Number served:	The target population for the Municipal Sewer and Water Grant Program includes residents of Cumberland County municipalities who currently lack access to safe and reliable potable water. Specifically, this encompasses: The 11,100 feet of Old Bath Road to Bay Bridge Estates. Bay Bridget Estates is a mobile home park that has experienced a number of issues in the past with access to safe potable water, is a vulnerable community, has existing water improvement needs and other environmental concerns.
Period of Performance:	June 01, 2024- June 30,2026
Partner Organizations or Collaborators:	The Town of Brunswick & The Brunswick & Topsham Water District
Mandatory Indicators:	See outlined below data

Median Household Income	\$67,488.00
Lowest Quintile Income	\$35,618.00
Labor	The Project does not require Davis Bacon
NPES Permit Number	ME0000957
Public Water System ID Number	0090260

SLFRF Recovery Plan Performance Report 2024 Project Inventory

Project Name: Bridgton Sewer Main Extensions Project Funding amount: \$450,000.00	Project Identification Number: 30177
Project Expenditure Category: 5-Infrastructure	Sub Category: 5.1 Centralized Wastewater Treatment

Project Overview

The Municipal Sewer and Water Grant Program aims to provide funding to Cumberland County municipalities to support local sewer and water infrastructure needs. The goal of the County ARPA funding is to support and prioritize projects that provide the greatest public benefit to our community.

Water and sewer infrastructure investments are among the six ways that funds can be used for recovery and to address climate change impacts. Guidance from the U.S. Department of the Treasury identifies drinking water infrastructure projects as eligible if they meet the U.S. Environmental Protection Agency’s (EPA) Drinking Water State Revolving Fund (DWSRF) eligibility criteria. All projects must be deemed necessary investments. According to the Treasury, necessary investments are defined as:

1. **Responsive to an identified need:** Projects must achieve or maintain an adequate minimum level of service, which may include a reasonable projection of increased need due to population growth or other factors.
2. **Cost-effective:** The projects must be a cost-effective means of meeting the identified need, taking into account available alternatives.
3. **Sustainable:** For investments in infrastructure that supply drinking water to meet projected population growth, projects must be sustainable over their estimated useful life.

In compliance with the CWSRF, the Town of Bridgton is advancing a sewer main extension project that complements its ongoing Wastewater Treatment Facility and collection system initiatives. This project has secured a \$1,400,000 earmark from the Environmental Protection Agency (EPA) Community Grants Program, with an additional \$350,000 contribution from the town as matching funds. The SLFRF funding, totaling \$450,000, will complete the \$2,200,000 project aimed at providing sewer access to current residents and managing wastewater for upcoming housing developments.

Bridgton, like many other Maine communities, is actively expanding its housing inventory and labor market. This project plays a crucial role in achieving these objectives by facilitating sewer connections for existing residential properties on Smith Avenue and Maple Street, as well as for the affordable housing development at Pikes Farm on South High Street. These connections are essential as individual septic systems age, ensuring continued public health and environmental standards.

Moreover, the project extends sewer infrastructure through Sustainable Way, enhancing Bridgton's capacity to increase its workforce housing stock and employment opportunities in identified growth

areas. This initiative not only supports community development but also aligns with broader economic goals aimed at fostering sustainable growth and resilience.

Website Link: [Town of Bridgton](#)

Use of Evidence

Total funds being used for evidence-based interventions (if applicable): N/A

Evidence base for the interventions N/A

Is the program evaluation being used? N/A

If program evaluation being used, evaluation Description: N/A

Performance Report: The following is the performance matrix created by the County to demonstrate key performance indicators for our jurisdiction’s major SLFRF funded projects.

Objective:	Make necessary investments that address the consequences of deferred maintenance in drinking water systems and removal, management, and treatment of sewage and stormwater, along with additional resiliency measures needed to adapt to climate change.
Activities to achieve objective:	Installation of the sewer main extension.
Expected results:	The installation of sewer will create a means for sustainable community development, environmental stewardship, and enhanced public health and well-being. It represents a critical investment in infrastructure that supports long-term community resilience and economic vitality.
Performance indicator:	The completion of the project, connection rate, environmental impacts and operational reliability are all measure to identify the success of the sewer main.
Target Population or group & Number served:	The target population for the Municipal Sewer and Water Grant Program includes residents of Cumberland County municipalities who currently lack access to safe and reliable potable water. Specifically, this encompasses a high percentage of low-to-moderate-income (LMI) populations that reside in HUD’s Block Group 5 of Census Tract 160, which has a LMI percentage of 56.02.

Period of Performance:	September 28, 2023- December 31, 2024
Partner Organizations or Collaborators:	The Town of Bridgton, EPA, and Rural Development.
Mandatory Indicators:	See outlined below data
<i>Median Household Income</i>	\$24,000.00
<i>Lowest Quintile Income</i>	\$10,600.00
<i>Labor</i>	This project is using EPA, and Rural Development funding which requires Davis Bacon compliance.
<i>NPES Permit Number</i>	MEU508273
<i>Public Water System ID Number</i>	90230

SLFRF Recovery Plan Performance Report 2024 Project Inventory

Project Name: Pownal Center Water Association Funding amount: \$20,000.00	Project Identification Number: 30183
Project Expenditure Category : 5-Infrastructure	Sub Category: 5.11 Transmission and Distribution

Project Overview

The Municipal Sewer and Water Grant Program aims to provide funding to Cumberland County municipalities to support local sewer and water infrastructure needs. The goal of the County ARPA funding is to support and prioritize projects that provide the greatest public benefit to our community.

Water and sewer infrastructure investments are among the six ways that funds can be used for recovery and to address climate change impacts. Guidance from the U.S. Department of the Treasury identifies drinking water infrastructure projects as eligible if they meet the U.S. Environmental Protection Agency’s (EPA) Drinking Water State Revolving Fund (DWSRF) eligibility criteria. All projects must be deemed necessary investments. According to the Treasury, necessary investments are defined as:

1. **Responsive to an identified need:** Projects must achieve or maintain an adequate minimum level of service, which may include a reasonable projection of increased need due to population growth or other factors.
2. **Cost-effective:** The projects must be a cost-effective means of meeting the identified need, taking into account available alternatives.
3. **Sustainable:** For investments in infrastructure that supply drinking water to meet projected population growth, projects must be sustainable over their estimated useful life.

In compliance with the DWSRF criteria, the town of Pownal will install Sustainable Emergency Power for the PCWA Water System by way of a backup diesel generator to keep operations running smoothly during power outages. Installation of fuel tanks and security pad on site will also occur to continue running the generator. Backup generators for water systems in small towns like Pownal play a crucial role in ensuring public health, safety, and continuity of essential services in small towns during power outages and emergencies.

Website Link:

Use of Evidence

Total funds being used for evidence-based interventions (if applicable): N/A

Evidence base for the interventions: N/A

Is the program evaluation being used? N/A

If program evaluation being used, evaluation Description: N/A

Performance Report: The following is the performance matrix created by the County to demonstrate key performance indicators for our jurisdiction's major SLFRF funded projects.

Objective:	Make necessary investments that address the consequences of deferred maintenance in drinking water systems and removal, management, and treatment of sewage and stormwater, along with additional resiliency measures needed to adapt to climate change.
Activities to achieve objective:	Replace current generator and installing fuel tanks to run the equipment.
Expected results:	The backup generator will provide continuous water supply during power outages, which will prevent disruptions in water supply to residents and businesses, maintain essential services. The generator will also enhance the town's ability to respond to emergencies such as natural disasters or infrastructure failures. It ensures that water can still be distributed for firefighting, medical facilities, and public health needs.
Performance indicator:	The town of Pownal will track operational reliability of the generator to measure the percentage of time the backup generator successfully starts and runs during power outages.
Target Population or group & Number served:	The target population for the Municipal Sewer and Water Grant Program includes residents of Cumberland County municipalities who currently lack access to safe and reliable potable water. Specifically, this encompasses: the general public, Town office, Fire department and public works.
Period of Performance:	June 01, 2023- December 31, 2024
Partner Organizations or Collaborators:	The Town of Pownal.
Mandatory Indicators:	See outlined below data

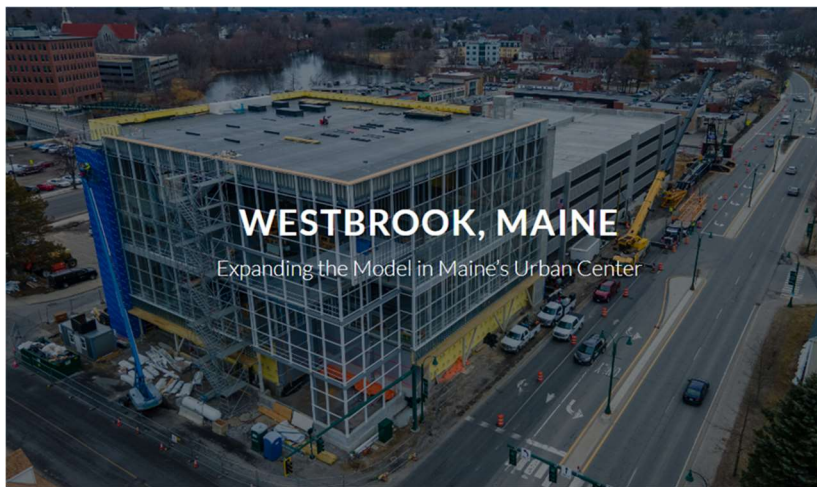
<i>Median Household Income</i>	\$45,000.00
<i>Lowest Quintile Income</i>	\$28,000.00
<i>Labor</i>	The Project does not require Davis Bacon
<i>NPES Permit Number</i>	N/A
<i>Public Water System ID Number</i>	N/A

SLFRF Recovery Plan Performance Report 2024 Project Inventory

Project Name: City of Westbrook Vertical Harvest Funding amount: \$500,000.00	Project Identification Number: 30057
Project Expenditure Category : 5-Infrastructure	Number Category: 5.1 –Centralized Wastewater Treatment

Project Overview

Water and sewer infrastructure investments are among the six ways that funds can be used for recovery and to address climate change impacts. This public-private development comprises a vertical urban farm, residential housing apartments and a four-story parking structure located in the heart of Westbrook, Maine’s downtown district. With its innovative program and sustainable approach to agriculture and design, this dynamic project promises to continue the revitalization of downtown Westbrook and to be a catalyst for the urban farming movement.



The cornerstone of this project, Vertical Harvest of Maine’s urban farm, operates at the intersection of climate change and food security

with their innovative agriculture approach and economic inclusivity. Efficient and concentrated land use grows millions of pounds of produce with recycled water and energy-efficient systems. By growing and distributing this produce locally, the overall carbon footprint is reduced significantly. There are also plans for a solar array atop the urban farm. Furthermore, the Vertical Harvest urban farm will employ 50-100 individuals with physical and intellectual disabilities with permanent, year-round, dignified employment with a livable wage. The parking garage will be equipped with electric car chargers to support the conversion away from fossil fuels.

Prior to constructing the garage, wastewater and storm water lines will be replaced and upgraded from early 1900’s construction, which will provide the City’s residents greater resiliency for this infrastructure. This portion of the Project is what Cumberland County used the ARPA funding to expend funding towards and is eligible under centralized Wastewater Treatment.

Website Link : [Vertical Harvest Westbrook](https://www.westbrookmaine.com/vertical-harvest)

Use of Evidence

Total funds being used for evidence-based interventions (if applicable): N/A

Evidence base for the interventions: N/A

Is the program evaluation being used? N/A

If program evaluation being used, evaluation Description: N/A

Performance Report: The following is the performance matrix created by the County to demonstrate key performance indicators for our jurisdiction's major SLFRF funded projects.

Objective:	Make necessary investments that address the consequences of deferred maintenance in drinking water systems and removal, management, and treatment of sewage and storm water, along with additional resiliency measures needed to adapt to climate change.
Activities to achieve objective:	Replacement of wastewater and storm water lines.
Expected results:	Replacing wastewater and stormwater lines is a critical investment in infrastructure that supports public health, environmental stewardship, community resilience, and economic vitality. These benefits underscore the importance of ongoing infrastructure maintenance and modernization efforts in municipalities worldwide.
Performance indicator:	Improved system reliability, enhanced environmental protection, public health and safety.
Target Population or group & Number served:	The Project is located in a qualified census tract (QCT), where (by definition) the poverty rate is at least 20% or the median family income and does not exceed 80% of statewide median family income.
Period of Performance:	September 28, 2023- December 31, 2024
Partner Organizations or Collaborators:	The City of Westbrook.
Mandatory Indicators:	See outlined below data
Median Household Income	\$71,182

<i>Lowest Quintile Income</i>	\$26,337
<i>Labor</i>	As part of the City's contract with Wright Ryan, a performance bond and a payment bond were secured for the project. From the City's perspective, these two documents ensure that subcontractors' laborers will be paid for satisfactory work to minimize potential disputes and disruptions to work. From Wright Ryan's perspective, the project was bid with both union contractors and non-union (or open shop) contractors to maximize the available Community agreement.
<i>NPES Permit Number</i>	MER041002 & ME0100846
<i>Public Water System ID Number</i>	N/A

SLFRF Recovery Plan Performance Report 2024 Project Inventory

Project Name: County Compliance Audit Manger	Project Identification Number: 54-54550-5120
Funding amount: \$825,000.00	Sub Category: 71-Administrative Expenses
Project Expenditure Category : 7-Administrative	Sub Category: 71-Administrative Expenses

Project Overview

: Cumberland County government as stewards of the State and Local Fiscal Recovery funds (SLFRF) are required to create and maintain internal controls and risk management systems for all of our grantees and the use of the federal award. To maintain effective oversight of all grantees and one that provides reasonable assurance that the objectives of any grant award and their by entity will be achieved Cumberland County created a position to oversee the State and Local Fiscal Recovery funds (SLFRF) funds titled Compliance and Audit Manager. The positions objectives include operations, reporting and compliance.

Website Link: [Cumberland County](#)

Use of Evidence

Total funds being used for evidence-based interventions (if applicable): N/A
Evidence base for the interventions N/A
Is the program evaluation being used? N/A
If program evaluation being used, evaluation Description: N/A

Performance Report

Cumberland County hired staff specifically and solely for the purpose to oversee the State and Local Fiscal Recovery funds (SLFRF) to ensure compliance with the Federal Funding. This position will also be tasked with the development, implementation and oversight of the County’s American Rescue Plan Act grant funding program totaling \$57,300,874.00 dollars. This is the largest federal award ever to be received by the County.

The Compliance and Audit Manager creates and maintains operations, reporting and compliance oversight of the award. Work synergistically with County leadership in developing and implementing policies and procedures for the award, to ensure it aligns with the goals of leadership and program regulations.

SLFRF Recovery Plan Performance Report 2024 Project Inventory

Project Name: Cumberland County Internal Operational Support Staffing	Project Identification Number: 30208
Funding amount: \$1,127,467.96	
Project Expenditure Category : 6-Revenue Replacement	Sub Category: 61-Provision of Government Services

Project Overview

Description: Government Services associated with supporting staff training and development not covered by existing funding and funds to support projects applicable to government services

Cumberland County has elected the Standard Allowance of \$10 million, and has set aside the standard allowance for Revenue Replacement related projects. These projects include a board range of general government services under the Revenue Replacement allowable use category. Government services generally include any service traditionally provided by a government, unless Treasury has stated otherwise.

Performance Reporting: Government services is the most flexible eligible use category under the SLFRF program, and funds are subject to streamlined reporting and compliance requirements.

SLFRF Recovery Plan Performance Report 2024 Project Inventory

Project Name: Cumberland County New Building Operational Cost	Project Identification Number: 30205
Funding amount: \$221,727	
Project Expenditure Category : 6-Revenue Replacement	Sub Category: 61-Provision of Government Services

Project Overview

Description: Funding is supporting operational cost for the County's new admin building which has not yet been occupied by the County, and is being renovated

Cumberland County has elected the Standard Allowance of \$10 million, and has set aside the standard allowance for Revenue Replacement related projects. These projects include a board range of general government services under the Revenue Replacement allowable use category. Government services generally include any service traditionally provided by a government, unless Treasury has stated otherwise.

Performance Reporting: Government services is the most flexible eligible use category under the SLFRF program, and funds are subject to streamlined reporting and compliance requirements.

SLFRF Recovery Plan Performance Report 2024 Project Inventory

Project Name: Cumberland County Revenue Replacement Real Estate Building Development	Project Identification Number: 54-54556-9650-30166
Funding amount: \$4,611,537.10	
Project Expenditure Category: 6-Revenue Replacement	Sub Category: 61-Provision of Government Services

Project Overview

Description:

Cumberland County Government Use ARPA funds to purchase a new administrative building

Cumberland County has elected the Standard Allowance of \$10 million, and has set aside the standard allowance for Revenue Replacement related projects. These projects include a board range of general government services under the Revenue Replacement allowable use category. Government services generally include any service traditionally provided by a government, unless Treasury has stated otherwise.

Performance Reporting: Government services is the most flexible eligible use category under the SLFRF program, and funds are subject to streamlined reporting and compliance requirements.

SLFRF Recovery Plan Performance Report 2024 Project Inventory

Project Name: Cyber Security Funding amount: \$79,603.75	Project Identification Number: 54-54556-6950- 21021
Project Expenditure Category : 6-Revenue Replacement	Sub Category: 61-Provision of Government Services

Project Overview

Description: Enhance the County's Firewalls and security

Cumberland County has elected the Standard Allowance of \$10 million, and has set aside the standard allowance for Revenue Replacement related projects. These projects include a board range of general government services under the Revenue Replacement allowable use category. Government services generally include any service traditionally provided by a government, unless Treasury has stated otherwise.

Performance Reporting: Government services is the most flexible eligible use category under the SLFRF program, and funds are subject to streamlined reporting and compliance requirements.

SLFRF Recovery Plan Performance Report 2024 Project Inventory

Project Name: District Attorney Computer Hardware Funding amount: \$22,340.41	Project Identification Number: 54-54556-6950- 21023
Project Expenditure Category : 6-Revenue Replacement	Sub Category: 61-Provision of Government Services

Project Overview

Description: Purchase of Computer hardware such as laptops and tablets to allow for remote work.

Cumberland County has elected the Standard Allowance of \$10 million, and has set aside the standard allowance for Revenue Replacement related projects. These projects include a board range of general government services under the Revenue Replacement allowable use category. Government services generally include any service traditionally provided by a government, unless Treasury has stated otherwise.

Performance Reporting: Government services is the most flexible eligible use category under the SLFRF program, and funds are subject to streamlined reporting and compliance requirements.

SLFRF Recovery Plan Performance Report 2024 Project Inventory

Project Name: Jail Fire Alarm Maintenance Funding amount: \$175,019.21	Project Identification Number: 54-54556-6950- 21018
Project Expenditure Category : 6-Revenue Replacement	Sub Category: 61-Provision of Government Services

Project Overview

Description: Fire alarm system is original to building. Need to replace for enhanced safety.

Cumberland County has elected the Standard Allowance of \$10 million, and has set aside the standard allowance for Revenue Replacement related projects. These projects include a board range of general government services under the Revenue Replacement allowable use category. Government services generally include any service traditionally provided by a government, unless Treasury has stated otherwise.

Performance Reporting: Government services is the most flexible eligible use category under the SLFRF program, and funds are subject to streamlined reporting and compliance requirements.

SLFRF Recovery Plan Performance Report 2024 Project Inventory

Project Name: Jail HVAC interface upgrade Funding amount: \$72,206.28	Project Identification Number: 54-54556-6950- 21019
Project Expenditure Category : 6-Revenue Replacement	Sub Category: 61-Provision of Government Services

Project Overview

Description: The Jails HVAC control unit is outdated and needs to have the electrical interface components of the system updated

Cumberland County has elected the Standard Allowance of \$10 million, and has set aside the standard allowance for Revenue Replacement related projects. These projects include a board range of general government services under the Revenue Replacement allowable use category. Government services generally include any service traditionally provided by a government, unless Treasury has stated otherwise.

Performance Reporting: Government services is the most flexible eligible use category under the SLFRF program, and funds are subject to streamlined reporting and compliance requirements.

SLFRF Recovery Plan Performance Report 2024 Project Inventory

Project Name: Lead Testing	Project Identification Number: 54-54556-6950-22028
Funding amount: \$9,344.70	
Project Expenditure Category : 6-Revenue Replacement	Sub Category: 61-Provision of Government Services
Project Overview	
Description: Funding supported Leading Testing at our Jail	

SLFRF Recovery Plan Performance Report 2024 Project Inventory

Project Name: Cumberland County New Building Renovation Funding amount: \$3,400,000.00	Project Identification Number: 30204
Project Expenditure Category : 6-Revenue Replacement	Sub Category: 61-Provision of Government Services

Project Overview

Funding is supporting the renovation costs associated with acquisition of a new Admin Building for County Government.

Cumberland County has elected the Standard Allowance of \$10 million, and has set aside the standard allowance for Revenue Replacement related projects. These projects include a board range of general government services under the Revenue Replacement allowable use category. Government services generally include any service traditionally provided by a government, unless Treasury has stated otherwise.

Performance Reporting: Government services is the most flexible eligible use category under the SLFRF program, and funds are subject to streamlined reporting and compliance requirements.

SLFRF Recovery Plan Performance Report 2024 Project Inventory

Project Name: CIA Marquee Funding amount: \$179,512.00	Project Identification Number: 54-54556-6950-30199
Project Expenditure Category : 6-Revenue Replacement	Sub Category: 61-Provision of Government Services

Project Overview

Cross Insurance Area was provided funding to purchase a new Marquee.

Cumberland County has elected the Standard Allowance of \$10 million, and has set aside the standard allowance for Revenue Replacement related projects. These projects include a board range of general government services under the Revenue Replacement allowable use category. Government services generally include any service traditionally provided by a government, unless Treasury has stated otherwise.

Performance Reporting: Government services is the most flexible eligible use category under the SLFRF program, and funds are subject to streamlined reporting and compliance requirements.

SLFRF Recovery Plan Performance Report 2024 Project Inventory

Project Name: Covid Expenses for Remote work Funding amount: \$419.98	Project Identification Number: 54-54556-6950-22027
Project Expenditure Category: 6-Revenue Replacement	Sub Category: 61-Provision of Government Services

Project Overview

Description: Remote work needs for staff

Cumberland County has elected the Standard Allowance of \$10 million, and has set aside the standard allowance for Revenue Replacement related projects. These projects include a board range of general government services under the Revenue Replacement allowable use category. Government services generally include any service traditionally provided by a government, unless Treasury has stated otherwise.

Performance Reporting: Government services is the most flexible eligible use category under the SLFRF program, and funds are subject to streamlined reporting and compliance requirements.