

**St. Lucie County Board of County
Commissioners, Florida
Recovery Plan**

**American Rescue Plan Act
State and Local Fiscal Recovery Funds
2024 Report**



ST. LUCIE COUNTY BOARD OF COUNTY COMMISSIONERS
FLORIDA
2024 RECOVERY PLAN

Table of Contents

General Overview 2

 Executive Summary2

 Uses of Funds2

 Promoting Equitable Outcomes5

 Community Engagement.....6

 Labor Practices6

 Use of Evidence6

 Performance Report 6

 Table of Expenses by Expenditure Category.....6

Project Inventory 7 - 20



GENERAL OVERVIEW

Executive Summary

The American Rescue Plan Act of 2021 authorized more than \$1.9 trillion of economic stimulus to combat the COVID-19 pandemic, including the public health and economic impacts. Through the State and Local Fiscal Recovery Fund the legislation included \$65.1 billion in direct, flexible aid to every county in America. These direct funds may be used to support public health response, address negative economic impacts, replace public sector revenue loss, premium pay for essential workers, and necessary investment in water, sewer, or broadband infrastructure.

As part of the \$65.1 billion St. Lucie County received \$63,767,844 and has allocated the money as follows:

US Treasury Expenditure Categories	Amount
1 – Public Health	\$1,479,780
2 – Negative Economic Impacts	\$5,171,783
5 – Infrastructure Utility Water & Wastewater Infrastructure	\$37,353,459
5 – Infrastructure Stormwater Infrastructure	\$18,223,332
6 – Revenue Replacement	\$1,140,263
<i>ARPA Reserves / COVID-19 Set Aside</i>	\$220,328
7 – Administrative Administration Review & Compliance Reporting	\$178,899
TOTAL	\$63,767,844

St. Lucie County is included as part of the \$4.171 billion allocated to Florida's 67 counties. The St. Lucie County American Rescue Plan – State and Local Fiscal Recovery Fund Plan (Plan) identifies projects within U.S. Treasury eligible expenditure categories approved by the Board of County Commissioners (BOCC) in August 2021. The BOCC directed the County Administration to develop a Plan that outlines the intended delivery of projects throughout St. Lucie County. On June 1, 2021, St. Lucie County received 50% of its allocation in the amount of \$31,883,92, and the remaining 50%, or \$31,883,922 on June 16, 2022.

This Plan outlines the allowable projects, services, and representative assistance to be provided based on eligible expenditures and takes into consideration the eligible period and use of funds as defined by the U.S. Treasury.

Uses of Funds

Public Health (EC 1)

- **1.1 COVID-19 Vaccination** – St. Lucie County partnered with St. Lucie County Department of Health to support COVID-19 vaccine Point of Dispensing (POD) events

known as vaccination clinics throughout the county to prevent the occurrence of, spread, and mortality caused by COVID-19 in underserved communities. St. Lucie County staff played an integral role in preventing, mitigating, and responding to the health, social, and economic impacts of COVID-19.

- **1.4 Prevention in Congregate Settings** – The operational preparedness, prevention, and management of COVID-19 in the St. Lucie County correctional facility presented significant challenges. The County intends to conduct a medical wing needs study that will evaluate the potential expansion of the correctional facility’s medical unit.
- **1.7 Other COVID Related Expenses** – The development and implementation of a public outreach and communications initiative. Responding to the urgent need during the COVID19 pandemic. St. Lucie County’s Communications Division championed public outreach and communications. Investments in technology were made by upgrading network switches to allow more efficient service connections to support community efforts and installation of a new payment kiosk to allow customers a contactless payment option to ensure social distancing.
- **1.12 Mental Health Services** – St. Lucie County has allocated funding to support mental health needs in our Veteran’s community.
- **1.14 Other Public Health Services** – During the COVID-19 pandemic it became apparent that the medical examiner 19th District Medical Examiner’s office is undersized and underequipped to handle the increased capacity caused by a pandemic. The Medical Examiner shared concerns of undersized capacity for both the facility and the file storage. The County along with the three other counties in the district have resolved to fund a needs assessment for the facility.

Negative Economic Impacts (EC 2)

- **2.2 Household Assistance: Rent, Mortgage, and Utility Aid** – In advance of SLFRF, St. Lucie County utilized general funds to provide mortgage and utility assistance to households. The program was open to all residents from the unincorporated County and both cities. The County moved these allowable expenses to our SLFRF allocation.

St. Lucie County also received Emergency Rental Assistance funding from the US Treasury and continues assisting tenants in our community that need additional help to remain in their homes as our community recovers from the pandemic.
- **2.4 Household Assistance Internet Access Programs** – St. Lucie County allocated funding to provide digital access to our unserved and underserved community.
- **2.15 Long-Term Housing and Security: Affordable Housing** – The County is utilizing funding to complete a Housing Needs Assessment to identify the needs of our low-income residents.
- **2.16 Long-Term Housing Security Services for Unhoused Persons** – St. Lucie County recognizes the benefit of community partnerships in reaching underserved populations.

The County is providing aid through the Treasure Coast Homeless Services Council, to directly benefit the homeless population in our community.

- **2.29 Loans & Grants to Mitigate Financial Hardship** – In advance of SLFRF, St. Lucie County established a Small Business Assistance Program and utilized general funds to provide support to local small businesses in need of economic assistance to recover from the pandemic. The County moved these allowable expenses to our SLFRF allocation.

Water, Wastewater, and Stormwater Infrastructure (EC 5)

- St. Lucie County has begun preparation for environmental impacts associated with climate change and sea level rise. Located along Florida’s east coast, with direct access to the Atlantic Ocean from the Fort Pierce Inlet, St. Lucie County will directly experience changes as water levels continue to rise as predicted. Therefore, the County has deemed resiliency preparation as a priority for our residents over the next decade. The County is focused on investing our SLFRF funding into the design and construction of Water and Wastewater Utility Systems and Stormwater Infrastructure Projects.

The Unincorporated County is comprised largely of residential septic drain fields and well water systems. St. Lucie County Utilities Department endeavors to convert many homes from septic and well to centralized sewer systems and municipal water supplies. In addition to the septic to sewer and municipal water conversions, we intend to build additional stormwater infrastructure to increase capacity and aid in the removal of nutrients that adversely affect our major waterways. St. Lucie County is acutely aware of the importance the Indian River Lagoon and the North Fork of the St. Lucie River have on the livelihood of our entire community, including the City of Fort Pierce and the City of Port St. Lucie.

The County has a long history and large diverse community of subsistent fisherman and commercial fisherman that use these water bodies as sources of food and income for their families. These same waterways also serve as economic drivers for our recreation and tourism industries and are key components to the overall health and wellbeing of our community. The Indian River Lagoon is home to more than 4,000 species of plants and animals and is one of the most diverse estuaries in North America. The St. Lucie River supports a variety of federal and state-protected species like American alligators, manatees, nesting wood storks and little blue herons and is an important habitat for the juvenile phases of commercially important species such as blue crabs, snook, snapper, and shrimp.

St. Lucie County’s diverse population utilizes our local waters to work, play, and support their families, therefore it is imperative that we invest in our infrastructure to improve the resilience of our community and its resources.

Additional American Rescue Plan Act Funds

- Port of Fort Pierce will receive funds in the amount of \$806,772 through the Florida Seaport Transportation and Economic Development Council for operation expenses.

- Treasure Coast International Airport received funds in the amount of \$59,000 through the Federal Aviation Administration for operation expenses.
- The Environmental Resources Department received funds in the amount of \$25,000.
- St. Lucie County Community Services
 - Housing Division has received two direct allocations from the U.S. Treasury for Emergency Rental Assistance
 - Transit Division has received funds in the amount of \$1,246,729 through the Federal Transit Administration for operation expenses.
 - The Libraries Division received funds in the amount of \$48,718 which was used to purchase laptops and tablets.

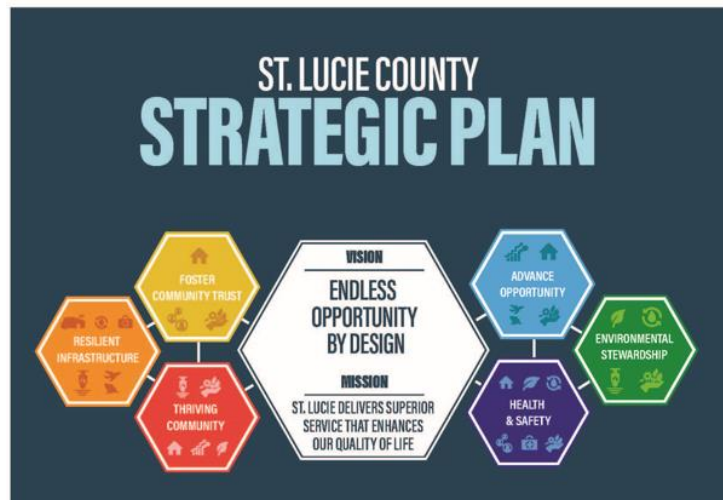
Promoting Equitable Outcomes

St. Lucie County has created a plan to provide equitable outcomes to meet a variety of needs throughout the community. We are committed to the “consistent, fair, just, and impartial treatment of all individuals, including individuals who belong to underserved communities.” through the development and implementation of funding and projects outlined in this Recovery Plan.

Community Engagement

Late 2019, St. Lucie County initiated a community based strategic planning process shortly preceding the COVID-19 pandemic.

Informed by the results of the community survey, the County conducted a series of public workshops to develop Vision, Mission, Goals and Objectives. The Board of County Commissioners formally approved the County’s Strategic Plan on June 2, 2020.



One year later staff used the plan to develop a list of qualifying projects for the Board’s consideration. Over the course of several months staff engaged the commissioners and the public through regular and informal public meetings.

- June 1, 2021, at a regular public meeting, the County Commission approved and accepted entering an agreement with US Treasury for the American Rescue Plan.
- June 2, 2021, at an informal public meeting, the County Commission discussed and provided staff direction on development of the project list.
- July 13, 2021, at an informal public meeting, the County Commission discussed allowable uses for project funding and provided additional direction to staff on development of project list.
- August 10, 2021, at an informal public meeting, the County Commission heard details on the proposed project list.

- August 17,2021, at a regular public meeting, the Board of County Commissioners approved the final project list.

Funding reallocation discussions and status updates are provided to the County Commission and Citizen’s Budget Committee at public meetings.

Labor Practices

St. Lucie County’s follows CFR 200 for the procurement of all federally funded design and construction projects. Projects are advertised to a fair and open market without limitations to geographic location or other limiting language. The County awards design projects to the most qualified firms through a short list and presentation format. Construction projects are awarded to the responsible responsive low bid firm. The County will make efforts to notify Disadvantage Business Enterprise (DBE), Minority Business Enterprise (MBE), and Women’s Business Enterprises (WBE) to apply for infrastructure projects funded by SLFRF.

Use of Evidence

The County is not currently incorporating evidence-based interventions or program evaluations into its use of the SLFRF funding. The bulk of the funding is being used to address critical infrastructure needs in the community with respect to drinking water and stormwater pollution control. If the Board, decides funds should be used to address the types of projects that require these evaluations, the County will fully comply with all Federal guidelines.

Performance Measurement

St. Lucie County staff across various departments collaborate closely in management of the American Rescue Plan projects. The ARPA compliance coordinator meets frequently with project management staff to review the status of all projects. By regularly analyzing project schedule, completion rate, and fiscal management, the team ensures timely project delivery and compliance with all aspects of the American Rescue Plan Act Final Rule. Status updates are provided regularly to County Administration and the Board of County Commissioners.

Table of Expenses by Expenditure Category

	Category	Cumulative expenditures to date (\$)	Amount spent since last Recovery Plan
1	Expenditure Category: Public Health	\$1,711,135	\$171,940
2	Expenditure Category: Negative Economic Impacts	\$5,065,532	\$302,125
3	Expenditure Category: Public Health-Negative Economic Impact: Public Sector Capacity	N/A	N/A
4	Expenditure Category: Premium Pay	N/A	N/A
5	Expenditure Category: Infrastructure	\$10,602,791	\$8,403,124
6	Expenditure Category: Revenue Replacement	\$1,140,263	\$449,644
7	Administrative	\$178,899	\$0

PROJECT INVENTORY

Expenditure Category 1 – Public Health

Project ARHEAL001: Vaccine Point of Dispensing (POD) events \$165,718

ARPA Expenditure Category: 1.1 COVID-19 Vaccination

Project Overview:

St. Lucie County supported COVID-19 vaccine Point of Dispensing (POD) events known as vaccination clinics throughout the county to prevent the occurrence of, spread, and mortality caused by COVID-19 in underserved communities.

Project Status: Complete

Project ID ARHEAL003: Vaccination Program-Personnel & Supplies \$232,160

ARPA Expenditure Category: 1.1 COVID-19 Vaccination

Project Overview:

St. Lucie County Public Safety Department/Emergency Operations utilized temporary administrative staffing services and medical personnel from our Employee Health Clinic and St. Lucie County Fire District for additional staffing as needed to assist with administering vaccines throughout the community. In addition, Public Safety also maintained our county's vaccination supplies.

Project Status: Complete

Project ARHEAL2619: Jail Medical Wing Expansion Study \$207,220

ARPA Expenditure Category: 1.4 Prevention in Congregate Settings

Project Overview:

Conduct a study, preliminary design, and probable cost to determine the need for an expansion to the inmate medical unit at the St. Lucie County Correctional Facility at Rock Road. The operational preparedness, prevention, and management of COVID-19 in the St. Lucie County correctional facility presented significant challenges.



The St. Lucie County Sheriff's Office instituted policies to reduce virus transmission and clinically managed persons with confirmed or suspected COVID-19 inside the facility. While the correctional facility has an onsite medical unit, the need far exceeded current capacity due to limited space for effective medical isolation. As a result, people had to be transferred offsite, increasing potential exposure risks and adding patients to an already stressed local hospital system.

The study will identify possible programs, enhancements, or facility expansions that could mitigate the spread of infectious disease.

Project Status: Complete

Project ARHEAL008: Vaccination Programs – Communications

\$191,122

ARPA Expenditure Category: 1.7 Other COVID-19 Public Health Exp. Communications

Project Overview:

The development and implementation of a public outreach and communications initiative. Responding to an urgent need, St. Lucie County’s Communications Division championed public outreach and communications.

The St. Lucie County Department of Health, a division of the Florida Department of Health, did not have a full-time Public Information Officer. In March of 2021, there was no state or federal communications plan. St. Lucie County staff developed a public outreach and communications initiative. This initiative included:

- Weekly video broadcasts of COVID-19 updates with the County’s Public Safety Division, St. Lucie County School District, and health officials. These videos were televised on SLCTV (Comcast 28 / U-verse 99) and streamed live to Facebook.
 - To meet the needs of Limited English Persons (LEP), Spanish and Haitian Creole translators provided translations of the messaging immediately following the English version. Additionally, a certified American Sign Interpreter signed the broadcast.
 - The creation of a stand-alone website (www.recoverstlucie.org) focused on pandemic resources including COVID-19 testing sites, vaccine locations, and economic relief assistance including grants for small businesses, renters, and homeowners.
 - A Vaccine Myth Busters Town Hall with local doctors and hospital officials.
 - Press releases on COVID-19 testing and vaccination sites.
 - Meetings with community groups and churches to extend outreach to underserved populations, including community-based vaccine clinics.
 - Frequent and accurate content on the County’s social media channels (Nextdoor, Facebook, Twitter, Instagram, and YouTube).
 - The creation of an online application process to accept applications for small business assistance and rental assistance programs.
 - Production of a dozen video Public Service Announcements (PSAs) with local community leaders and health officials.
 - Print, radio, billboard, and television advertising and outreach.

Project Status: Complete

Project ARHEAL009: Enhance Employee Safety Broadcast System & IT Projects \$801,169

ARPA Expenditure Category: 1.7 Other COVID-19 Public Health Exp. Communications

Project Overview:

As a result of the COVID-19 Pandemic, St. Lucie County was faced with enhancing our Employee Safety Broadcast System and other relevant IT improvements to allow County staff to maintain secure access from remote locations to serve the citizens of our community.

Project Status: Complete

Project ARHEAL010: Utilities Contactless Payment Kiosk **\$84,000**

ARPA Expenditure Category: 1.7 Other COVID-19 Public Health Exp. Communications

Project Overview:

The Utilities Department recognized their customers had a challenge paying their Utility bills during COVID-19 pandemic. This payment kiosk technology will provide the customers with the benefit of providing a real-time, contactless service to access their accounts and pay their bills.

Project Status: Complete

Project ID ARHEAL004: Mental Health – Veterans **\$200,000**

ARPA Expenditure Category: 1.12 Mental Health Services

Project Overview:

St. Lucie County has allocated funding to support mental health needs in our Veteran’s community, through our Veterans Affairs Division.

Project Status: On schedule

~~**Project ARHEAL1905: Medical Examiner’s Office Needs Study**~~ ~~**\$0**~~

ARPA Expenditure Category: 1.14 Other Public Health Services

~~**Project Overview:**~~

~~St. Lucie County received a state appropriation in the amount of \$1,000,000 to cover the cost of the needs study and design of the new Medical Examiner’s Facility. \$200,000 of ARPA funds are being reallocated to the North Hutchinson Island Septic to Sewer project.~~

~~***Project Status: Canceled***~~

Expenditure Category 2 – Negative Economic Impacts

Project ARECON003: Mortgage & Utility Assistance Program **\$960,202**

ARPA Expenditure Category: 2.2 Household Assistance: Rent, Mortgage, and Utility Aid

Project Overview:

St. Lucie County established a mortgage and utility assistance program for struggling households. The program was open to all residents from the unincorporated County and both cities.

Project Status: Complete

Project ID ARINFR44008: Fiber Broadband / Digital Access **\$2,900,000**

ARPA Expenditure Category: 2.4 Household Assistance: Internet Access Programs

Project Overview:



St. Lucie County recognizes the need for access to reliable broadband and internet services for our entire community. The County is working closely with local providers, St. Lucie County School District, and other community partners to determine the areas of maximum impact to provide for unserved and underserved residents in need of broadband access. The County's intention is to meet the speeds as defined in the Final Rule.

The County will partner with Fort Pierce Utilities Authority to assist with a Smart Neighborhood Initiative being developed in the Lincoln Park area.

\$2.9 million of the funding will be used by the St. Lucie Education Foundation to assist the St. Lucie School District with providing a digital access program for our unserved and underserved students and families throughout the County.

Project Status: Complete

Project ARECON004: Housing Hub

\$500,000

ARPA Expenditure Category: 2.16 Long-term Housing Security: Services for Unhoused persons

Project Overview:



St Lucie County is providing funding to the Housing Hub through the Treasure Coast Homeless Services Council, the lead agency for the Continuum of Care. The Housing HUB is a Multi-Agency Resource Center that operates a men's residential program that serves unaccompanied men experiencing chronic, street homelessness in St. Lucie County. Participants in this program receive mental health and substance abuse evaluation, housing and stabilization services, benefit applications, housing counseling and referral to medical and mental health providers.

Project Status: On schedule

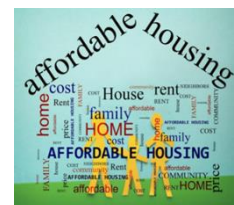
Project ARECON005: Housing Needs Assessment

\$150,000

ARPA Expenditure Category: 2.15 Long-term Housing Security: Affordable Housing

Project Overview:

St, Lucie County recognizes the need to assess the affordable housing needs of our community. The assessment will identify the affordable housing needs of low-income families and seniors, special needs households, and homeless persons in our community.



Project Status: Complete

Project ARHEAL006: Comprehensive Homelessness Plan - TCHSC **\$50,000**

ARPA Expenditure Category: 2.16 Long-term Housing Security: Services for Unhoused persons

Project Overview:

During the pandemic the County supplied additional funds to agency partners essential to addressing unmet needs in our community. We aid our vulnerable population through several local agencies that include the Treasure Coast Homeless Services Council, the Cultural Alliance, and the St. Lucie Health Department.

Project Status: Complete

Project ARECON001: Small Business Assistance Program **\$611,581**

ARPA Expenditure Category: 2.29 Loans or Grants to Mitigate Financial Hardship

Project Overview:

St. Lucie County established a Small Business Assistance Program to support local business in need of economic support to recover from the pandemic.

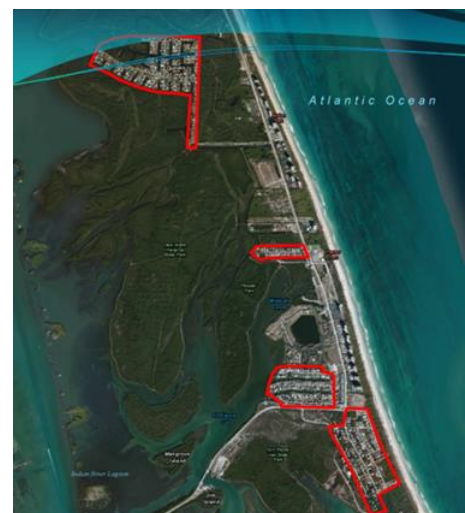
Project Status: Complete

Expenditure Category 5 – Infrastructure

Utility Projects

Sea level in combination with king tide events can cause increased flooding and septic tank seepage, resulting in mobilization of fecal coliform bacteria, nutrients, and other contaminants. Enhancing the current sewer system through additional force mains and repump stations will increase Public Utility’s capacity in managing wastewater in additional areas throughout the County. Expanding sewer lines and converting septic systems to centralized sewers will improve immediate issues of contamination of waterways and enhance human and environmental resiliency in both coastal and inland portions of the County.

Additionally, groundwater and surface water are intimately linked and sensitive to potential changes in precipitation, temperature, and sea level rise. Saltwater intrusion is a potential threat to public wells, and for those who depend on private wells as their primary source for potable water. Providing a potable water source for these residents is a priority in the County’s resilience planning efforts, supporting the health of citizens, the economy, and the environment.



Project ARINFR203604: North Hutchinson Island (NHI) Septic to Sewer **\$3,200,000**

ARPA Expenditure Category: 5.2 Clean Water: Centralized Wastewater Collection & Conveyance

Project Overview:

Project consists of constructing a wastewater collection system on North Hutchinson Island. The system will connect approximately five hundred thirty-two homes to central sewer and take legacy septic tanks and drain fields out of service. The neighborhoods included are Queens Cove, Fort Pierce Shores, Coastal Cove Unit I, and Coral Cove. North Hutchinson Island is bordered to the west by the Indian River Lagoon and eliminating these significant number of septic tanks from the barrier island provides an environmentally responsible solution to reduce the nutrient load in our outstanding Florida waterway.

The County will contribute 7% of the project cost and the homeowners will fund the balance through the County's Municipal Service Benefit Unit (MSBU) with a total estimated project cost of \$15,000,000.

Project Status: Construction

Project ARINFR213613: North County Regional Deep Injection Well **\$6,000,000**

ARPA Expenditure Category: 5.5 Clean Water: Other Sewer Infrastructure

Project Overview:

This project has been canceled and \$6,000,000 is slated for reallocation to complete previously approved ARPA Utility Projects.

Project Status: Canceled

Project ARINFR213614: Okeechobee Rd Water & Force Main Seminoles Tie-in **\$6,224,207**

ARPA Expenditure Category: 5.2 Clean Water: Centralized Wastewater Collection & Conveyance

Project Overview:

This project, consisting of 28,000 lineal feet of 12" water main and 6" force main between the termination point of the existing infrastructure and the intersection of Midway Road and Okeechobee Road, will be phase 1 of 7 to provide utility service to the southern portion of the St. Lucie County service area and phase 1 associated with looping the Okeechobee Road and Midway Road corridor enhancing the water flow availability and the wastewater collection availability. The area this project will benefit is I95 to the east, Picos Road to the North, and Midway Road to the south covering an area of approximately 12,000 acres.

Project Status: Construction

Project ARINFR213607: Indrio Road Water & Force Main **\$6,339,162**

ARPA Expenditure Category: 5.11 Drinking Water: Transmission Distribution

Project Overview:



This project, consisting of 8,300 lineal feet of 16" water main and 12" force main between the Indrio Road and Emerson Avenue intersection and existing infrastructure at the Indrio Road and Taylor Dairy Road intersection and on the Turnpike Feeder Road, is phase 3 of the previously completed 2 phases associated with looping the Indrio Road, Taylor Dairy Road and US1 corridor enhancing the water flow availability and the wastewater collection availability. The area this project will benefit is US1 to the east, North Boulevard to the North, to the west and St. Lucie Boulevard to the south covering an area of approximately 28,000 acres.

Project Status: Complete

Project ARINFR213609: North U.S. Highway 1 Water & Force Main \$706,966

ARPA Expenditure Category: 5.11 Drinking Water: Transmission Distribution

Project Overview:



This project, consisting of 3,250 lineal feet of 8" water main and 4" force main between the intersection of US1 and the Turnpike Feeder Road and the north County line, completes the water and wastewater expansion providing services along the US1 corridor in the St. Lucie County Utilities service area. This infrastructure will provide services availability to approximately 500 acres.

In addition, this project will encourage economic growth along this portion of U.S. Highway 1 and bring job opportunities to the community.

Project Status: Construction

~~Project ARINFR213615: Lakewood Park Potable Water Initiative \$0~~

ARPA Expenditure Category: 5.11 Drinking Water: Transmission Distribution

Project Overview:

This project was canceled and \$2,000,000 is slated for reallocation to the North Hutchinson Island Septic to Sewer project.

Project Status: Canceled

Project ARINFR213616: Okeechobee Rd. Water & Force Main S. Header Canal Tie-in \$2,491,014

ARPA Expenditure Category: 5.11 Drinking Water: Transmission Distribution

Project Overview:

This project is phase 3 of 7 to provide utility service to the southern portion of the St. Lucie County service area, The water and force main extensions will benefit properties from the intersection of Okeechobee Road and Midway Road west to South Header Canal Road would be but one of the phases of a water and force main trunk line to serve and area from Okeechobee

Road to the north, Carlton Road to the west, Peacock Road to the east and the County line to the south. This area has mixed-use potential and covers an area of approximately 47,000 acres.

Project Status: Construction

Project ARINFR213617: South Header Canal Rd. Water & Force Main **\$7,825,110**

ARPA Expenditure Category: 5.11 Drinking Water: Transmission Distribution

Project Overview:

This project, consisting of 12,400 lineal feet of 16" water main and 12" force main between Okeechobee Road and the C-24 canal, is phase 4 of 7 to provide utility service to the southern portion of the St. Lucie County service area. The water and force main extensions will benefit properties from the intersection of Okeechobee Road and South Header Canal Road to the County line to the south. This area has mixed-use potential and covers an area of approximately 14,000 acres.

Project Status: Construction

~~**Project ARINFR213618: St. Lucie Co. Fair Grounds Water & Wastewater Treatment**~~

ARPA Expenditure Category: 5.11 Drinking Water: Transmission Distribution

Project Overview:

This project was canceled and \$6,000,000 reallocated to complete previously approved ARPA Utility projects.

Project Status: Canceled

Project ARINFR213619: Midway Road Force Main **\$3,767,000**

ARPA Expenditure Category: 5.2 Clean Water: Centralized Wastewater Collection & Conveyance

Project Overview:

This project was designed using \$375,422 in ARPA funds, construction will be completed with proceeds from a Utility Bond. \$3,341,358 will be reallocated to complete previously approved ARPA Utility projects.

Project Status: Complete

Project ARINFR213608: North County Regional Upper Floridan Aquifer Raw

Water Supply Well **\$1,000,000**

ARPA Expenditure Category: 5.13 Drinking Water: Source

Project Overview:

This project has been canceled and \$1,000,000 is slated for reallocation to complete previously approved ARPA Utility Projects.

Project Status: Canceled

Stormwater Projects

Project ARINFR213624: Ancient Oak Preserve Wet Pond

\$1,000,000

ARPA Expenditure Category: 5.6 Clean Water: Stormwater

Project Overview:

The County owns a 1.7-acre parcel along Oleander Avenue in the Ancient Oak Preserve/Weldon B. Lewis Park. The southwest corner of the property is reserved to add stormwater treatment in the area, as the existing ditches do not have any treatment prior to entering the North Fork of the St. Lucie River. A retention pond has been identified to provide stormwater runoff treatment. For the purposes of this assessment, a wet pond with a 14-day residence time was used.



The project will include design, permitting and construction of the pond that will meet County requirements for littoral zones and upland buffer planting.

As temperatures increase and storms in South Florida continue to grow, the need for capacity to hold larger levels of stormwater runoff has become a major need. This project addresses this need for increased capacity as it will hold and treat large amounts of stormwater before entering the Ten Mile Creek system.

Project Status: Construction

Project ARINFR213625: Harmony Heights-Phase 3

\$3,606,363

ARPA Expenditure Category: 5.6 Clean Water: Stormwater

Project Overview:

The goal of the project is to construct dry detention ponds and associated swales in the Harmony Heights subdivision, a 228-acre basin. Due to the age of the area, the subdivision currently lacks an overall stormwater management system. The project will provide water quality benefits by intercepting and treating unregulated stormwater runoff. This is a continuation of a project which will have Phase 2 completed in June 2021.

The project consists of completing survey, design, permitting and construction of system to reduce nutrients from this subdivision. As temperatures continue to increase and sea levels rise, there is a need to improve drainage infrastructure systems to help eliminate flooding in St. Lucie's older neighborhoods. This project will increase drainage capacity and improve water quality in

the Harmony Heights neighborhood via the construction of detention ponds and new and improved swales and driveway culverts.

Project Status: Permitting & Construction

Project ARINFR213628: Baffle Box Program - River Park

\$835,000

ARPA Expenditure Category: 5.6 Clean Water: Stormwater

Project Overview:



Located west of and along the North Fork of the St. Lucie River, River Park is an existing single-family subdivision on aging septic systems. This area has shallow swales that convey stormwater directly into tidal waters of the Ten Mile Creek System with little to no pre-treatment. The project consists of completing survey, design, permitting and construction of a second-generation baffle boxes.

This project will help alleviate the influence of direct runoff by improving stormwater infrastructure and catching contaminants before they reach the waterway.

Project Status: Construction

Project ARINFR213627: Hog Pen Slough Stormwater Treatment Area

\$1,212,500

ARPA Expenditure Category: 5.6 Clean Water: Stormwater

Project Overview:

The project seeks to design and construct a stormwater treatment area (STA) to capture and treat flows out of Hog Pen Slough prior to discharge to the North Fork. Flows out of Hog Pen have been found to contain high levels of nitrogen and fecal coliform. This regional facility would be a partnership between the City of Port St. Lucie and St. Lucie County. The City owns an 11-acre parcel, and the County would participate in funding towards design and construction of the project.

Project Status: Design

Project ARINFR213626: Indrio Savannahs Wet Pond

\$1,500,000

ARPA Expenditure Category: 5.6 Clean Water: Stormwater

Project Overview:

Indrio Savannahs is a preserve that contains a natural flow-way that connects the northernmost lands in St. Lucie County to Taylor Creek. An existing lake is currently bypassed and could be connected and augmented with BMPs to provide nutrient reductions. This project includes design, permitting and construction of a treatment pond that could include gabion walls strategically placed to increase the tortuosity (length of the flow path) to promote additional nutrient removal.

The northeastern section of St. Lucie County has some of the oldest and poorest drainage infrastructure in the County. This is a very large drainage basin that flows directly from mobile home parks and industrial areas to Taylor Creek and then directly to the Indian River Lagoon. This project will help reduce nutrient loading and increase stormwater capacity.

Project Status: Construction



Project ARINFR143602: Indian River Estates-Phase III

\$3,776,969

ARPA Expenditure Category: 5.6 Clean Water: Stormwater

Project Overview:

This project seeks to construct Phase 3 of Indian River Estates Project. The phase will build on the improvements initiated under previous phases by evaluating the drainage along Easy Street and providing recommendations to reduce road flooding during heavy rain events. Also, addressing the interaction of flow between Indian River Estates and the Savannas and evaluating options to reduce / prevent backflow from the Savannas. To address these main elements, a preliminary engineering analysis is to be completed that will evaluate different alternatives to improve the flood level of service.

Indian River Estates sits adjacent to one of St. Lucie County’s largest wetland systems, the Savannas. As sea levels continue to rise resiliency will become an extremely important term for those living in this community. There is a need to improve drainage in this area as it already floods heavily during tropical events. This project will look to address the drainage infrastructure in Indian River Estates in preparation of future sea level rise.

Project Status: Design Complete

Project ARINFR213622: Melville Road Stormwater Improvement-Phase 2

\$1,502,500

ARPA Expenditure Category: 5.6 Clean Water: Stormwater

Project Overview:

The project includes drainage from a 175-acre residential neighborhood on aging septic systems that is in the historic area of White City. The project consists of design, permitting and construction of the second phase of the Melville Project. The 8.8-acre parcel will be used to construct a large stormwater treatment pond with native plantings and passive recreation.

White City is one the poorest draining neighborhoods in St. Lucie County. Built on low elevations, the area also sits adjacent to the tidally influenced Ten Mile Creek and is susceptible to flooding when the Creek rises. These issues are only expected to exacerbate as temperatures increase and sea levels continue to rise. This project looks to address these issues as a large stormwater retention area will be constructed.

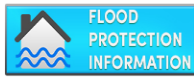
Project Status: Construction

Project ARINFR174608: Stormwater Master Plan

\$2,500,000

ARPA Expenditure Category: 5.6 Clean Water: Stormwater

Project Overview:



The last County-wide plan was developed in the 1990's. Such a document allows for a better understanding of overall County infrastructure, a better understanding of how the County drains, and a stronger knowledge of historical County efforts. The plan would include a current inventory and census of all County surface water infrastructure, a digital elevation model with up-to-date topographic data, and a hydraulic and hydrographic (H&H).

Located along Florida's east coast, St. Lucie County has begun preparation to begin to address sea level rise and County resiliency. A resiliency team has been hired and major grant-based work has begun. The key element to preparing for County climate change is the development of an updated stormwater plan that will address future environmental change and modern County drainage patterns. This project is of the utmost importance for future County resiliency.

Project Status: Design

Project ARINFR213623: Sunland Gardens Retrofit

\$500,000

ARPA Expenditure Category: 5.6 Clean Water: Stormwater

Project Overview:

Sunland Gardens is a 425-acre single family residential community. Developed and built decades ago the community predates stormwater regulations and has homes that are low lying and poorly draining roads. The area needs an overall drainage improvement. This project would include performing a survey, developing an overall drainage master plan for the Sunland Gardens Community and to identify basin limits to work towards a multi-phased restoration plan.

Sunland Gardens is one of North County's oldest neighborhoods and was built before stormwater infrastructure was required. Located adjacent to Taylor Creek, the community is prone to flooding and this problem will continue to increase as temperatures and water levels rise. This project will address the need to prepare Sunland Gardens for future floods and improve its overall resiliency towards sea level rise by preparing an overall drainage master plan for future community improvements.

Project Status: Complete

Project ARINFR213629: Ten Mile Creek Oxbow Restoration at George LeStrange Preserve

\$1,790,000

ARPA Expenditure Category: 5.6 Clean Water: Stormwater

Project Overview:

Ten Mile Creek is a natural system that drains nearly 90 square miles of the County. The Creek will receive discharge from the Indian River Lagoon-South CERP projects. Ten Mile Creek is sorely in need of maintenance to allow for the proper conveyance of water to protect from flood peril. Project will include dredge and removal of muck, spoil, and accumulated vegetation from the project area, effectively restoring +/- 2,000 linear feet of Ten Mile Creek within the George LeStrange Preserve. An historic oxbow will also be restored, thus allowing for greater conveyance and water quality improvements.



Ten Mile Creek is a natural system that conveys much of the County’s water east to the Atlantic Ocean. After years of no maintenance the Creek can no longer convey the amount of water needed during storm events to keep residents from flooding. With sea level rise as a concern, the County is making major efforts to improve Creek flow in preparation on increased capacity needs. This project will address future capacity by restoring an historic oxbow.

Project Status: Design Complete

Expenditure Category 6 – Revenue Replacement

Project ARREV1: General Government Services

ARPA Expenditure Category: 6.1 Provision of Government Services

Project Overview:

St. Lucie County elected to use the US Treasury’s standard allowance for revenue replacement in the amount of \$10,000,000. ***Project Status: On Going***

Expenditure Category 7 – Administrative and Other

Project ARHEAL007: Legislative Affairs - Grant Coordinator Position and Compliance Review

\$178,899

ARPA Expenditure Category: 7.1 Administrative Expense

Project Overview:

Originally, the Board of County Commissioner’s allocated \$708,532 to fund a dedicated Grant Coordinator position to monitor and oversee the County’s American Rescue Plan Act (ARPA)

Program. In 2023, under new administrative leadership, the grant compliance coordinator position was consolidated under the County Administrator. The employee maintained the grant compliance and reporting responsibilities but is paid from the County's general fund. This consolidation released \$529,633 to be utilized for general government services under Revenue Replacement (Expenditure Category 6).

Project Status: Complete