

**St. Lucie County Board of County  
Commissioners, Florida  
Recovery Plan**

**State and Local Fiscal Recovery Funds  
2022 Report**



ST. LUCIE COUNTY BOARD OF COUNTY COMMISSIONERS,  
FLORIDA  
2022 RECOVERY PLAN

Table of Contents

**General Overview** ..... 2

    Executive Summary .....2

    Uses of Funds .....2

    Promoting Equitable Outcomes .....5

    Community Engagement.....6

    Labor Practices .....7

    Use of Evidence .....7

    Performance Report ..... 7

    Table of Expenses by Expenditure Category.....8

**Project Inventory** ..... 8 - 21



# GENERAL OVERVIEW

## Executive Summary

The American Rescue Plan Act of 2021 authorized more than \$1.9 trillion of economic stimulus to combat the COVID-19 pandemic, including the public health and economic impacts. Through the State and Local Fiscal Recovery Fund the legislation included \$65.1 billion in direct, flexible aid to every county in America. These direct funds may be used to support public health response, address negative economic impacts, replace public sector revenue loss, premium pay for essential workers, and necessary investment in water, sewer, or broadband infrastructure.

As part of the \$65.1 billion St. Lucie County received \$63,767,844 and has allocated the money as follows:

US Treasury Expenditure Categories	Amount
1 – Public Health	\$1,473,001
2 – Negative Economic Impacts	\$5,383,898
5 – Infrastructure Utility Water & Wastewater Infrastructure	\$34,200,000
5 – Infrastructure Stormwater Infrastructure	\$17,848,067
6 – Revenue Replacement	\$690,179
<i>ARPA Reserves / COVID-19 Set Aside</i>	\$3,464,167
7 – Administrative Administration Review & Compliance Reporting	\$708,532
<b>TOTAL</b>	<b>\$63,767,844</b>

St. Lucie County is included as part of the \$4.171 billion allocated to Florida’s 67 counties. The St. Lucie County American Rescue Plan – State and Local Fiscal Recovery Fund Plan (Plan) identifies projects within U.S. Treasury eligible expenditure categories approved by the Board of County Commissioners (BOCC) in August 2021. The BOCC directed the County Administration to develop a Plan that outlines the intended delivery of projects throughout St. Lucie County. On June 1, 2021, St. Lucie County received 50% of its allocation in the amount of \$31,883,92, and the remaining 50%, or \$31,883,922 on June 16, 2022.

This Plan outlines the allowable projects, services, and the representative assistance to be provided. The Plan is based on eligible expenditures as defined by the U.S. Treasury. The Plan takes into consideration the eligible period and the use of funds as defined by the U.S. Treasury.

## Uses of Funds



### Public Health (EC 1)

- **1.1 COVID-19 Vaccination** – St. Lucie County partnered with St. Lucie County Department of Health to support COVID-19 vaccine Point of Dispensing (POD) events

known as vaccination clinics throughout the county to prevent the occurrence of, spread, and mortality caused by COVID-19 in underserved communities. St. Lucie County staff played an integral role in preventing, mitigating, and responding to the health, social, and economic impacts of COVID-19.

- **1.4 Prevention in Congregate Settings** – The operational preparedness, prevention, and management of COVID-19 in the St. Lucie County correctional facility presented significant challenges. The County intends to conduct a medical wing needs study that will evaluate the potential expansion of the correctional facility’s medical unit.
- **1.7 Other COVID Related Expenses** – The development and implementation of a public outreach and communications initiative. Responding to the urgent need during the COVID19 pandemic. St. Lucie County’s Communications Division championed public outreach and communications. Investments in technology were made by upgrading network switches to allow more efficient service connections to support community efforts and installation of a new payment kiosk to allow customers a contactless payment option to ensure social distancing.
- **1.12 Mental Health Services** – St. Lucie County has allocated funding to support mental health needs in our Veteran’s community.
- **1.14 Other Public Health Services** – During the COVID-19 pandemic it became apparent that the medical examiner 19th District Medical Examiner’s office is undersized and underequipped to handle the increased capacity caused by a pandemic. The Medical Examiner shared concerns of undersized capacity for both the facility and the file storage. The County along with the three other counties in the district have resolved to fund a needs assessment for the facility.



### Negative Economic Impacts (EC 2)

- **2.2 Household Assistance: Rent, Mortgage, and Utility Aid** – In advance of SLFRF, St. Lucie County utilized general funds to provide mortgage and utility assistance to households. The program was open to all residents from the unincorporated County and both cities. The County moved these allowable expenses to our SLFRF allocation.

St. Lucie County also received Emergency Rental Assistance funding from the US Treasury and continues assisting tenants in our community that need additional help to remain in their homes as our community recovers from the pandemic.

- **2.4 Household Assistance Internet Access Programs** – St. Lucie County allocated funding to provide digital access to our unserved and underserved community.
- **2.15 Long-Term Housing and Security: Affordable Housing** – The County is utilizing funding to complete a Housing Needs Assessment to identify the need of our low-income residents.
- **2.16 Long-Term Housing Security Services for Unhoused Persons** – St. Lucie County recognizes the benefit of community partnerships in reaching underserved populations. The County is providing aid through the Treasure Coast Homeless Services Council, to directly benefit the homeless population in our community.
- **2.29 Loans & Grants to Mitigate Financial Hardship** – In advance of SLFRF, St. Lucie County established a Small Business Assistance Program and utilized general funds to provide support to local small businesses in need of economic assistance to recover from the pandemic. The County moved these allowable expenses to our SLFRF allocation.

#### Water, Wastewater, and Stormwater Infrastructure (EC 5)

- St. Lucie County has begun preparation for environmental impacts associated with climate change and sea level rise. Located along Florida’s east coast, with direct access to the Atlantic Ocean from the Fort Pierce Inlet, St. Lucie County will directly experience changes as water levels continue to rise as predicted. Therefore, the County has deemed resiliency preparation as a priority for our residents over the next decade. The County is focused on investing our SLFRF funding into the design and construction of Water and Wastewater Utility Systems and Stormwater Infrastructure Projects.

The Unincorporated County is comprised largely of residential septic drain fields and well water systems. St. Lucie County Utilities Department endeavors to convert many homes from septic and well to centralized sewer systems and municipal water supplies. In addition to the septic to sewer and municipal water conversions, we intend to build additional stormwater infrastructure to increase capacity and aid in the removal of nutrients that adversely affect our major waterways. St. Lucie County is acutely aware of the importance the Indian River Lagoon and the North Fork of the St. Lucie River have on the livelihood of our entire community, including the City of Fort Pierce and the City of Port St. Lucie.

The County has a long history and large diverse community of subsistent fisherman and commercial fisherman that use these water bodies as sources of food and income for their families. These same waterways also serve as economic drivers for our recreation and tourism industries and are key components to the overall health and wellbeing of our community. The Indian River Lagoon is home to more than 4,000 species of plants and animals and is one of the most diverse estuaries in North America. The St. Lucie River supports a variety of federal and state-protected species like American alligators, manatees, nesting wood storks and little blue herons and is an important habitat for the juvenile phases of commercially important species such as blue crabs, snook, snapper, and shrimp.

St. Lucie County's diverse population utilizes our local waters to work, play, and support their families, therefore it is imperative that we invest in our infrastructure to improve the resilience of our community and its resources.

## Additional American Rescue Plan Act Funds

- Port of Fort Pierce will receive funds in the amount of \$806,772 through the Florida Seaport Transportation and Economic Development Council for operation expenses.
- Treasure Coast International Airport received funds in the amount of \$59,000 through the Federal Aviation Administration for operation expenses.
- Environmental Resources Department received funds in the amount of \$25,000.
- St. Lucie County Community Services
  - Housing Division has received two direct allocations from the U.S. Treasury for Emergency Rental Assistance
  - Transit Division has received funds in the amount of \$1,246,729 through the Federal Transit Administration for operation expenses.
  - Libraries Division received funds in the amount of \$48,718 which was used to purchase laptops and tablets.

## Promoting Equitable Outcomes



St. Lucie County is focused on upward mobility for our community. We are members of the Urban Institute Upward Mobility Cohort and have a Diversity, Equity and Inclusion Committee that focuses on recognizing and celebrating the diverse nature of our organization and community. With assistance from the Urban Institute, we are actively working to identify gaps and overlaps in the services we provide to our citizens.

The County has added a Community & Business Engagement Coordinator position to our ranks. This person serves as an engagement liaison and takes an active role in outreach of a wide spectrum of topics and information. They meet with residents and business members encouraging collaboration as partners with local government for positive outcomes to challenging community issues. They work to understand our citizens needs and desires to develop strategies to create and enhance a diverse local community.

The St. Lucie County Communications Division work diligently to provide media access to our entire community. During the pandemic the County provided weekly televised updates where Spanish and Creole translators were included for our LEP and featured a certified American Sign Interpreter. Communications Division concentrates on providing web content that is compliant with Americans with Disabilities Act (ADA). We strive to provide accessibility to the disabled in our community, so they may navigate our online content more easily.



St. Lucie County Tourism is an area of equitable improvement where the County is promoting additional material and videos to show our community diversity and encourage visitors to the Jewel of the Treasure Coast - featuring the historic City of Fort Pierce, the sprawling City of Port St. Lucie and the beautiful, tranquil beaches of Hutchinson Island. The goal is to improve the overall economic condition of our entire community through activities, special events, marketing and expanding tourism within all sectors of St. Lucie County as a year-round destination.

In addition to community outreach, St. Lucie County feels it is important to start at home by providing information and training opportunities to County staff, elected officials, and advisors that improve their understanding of different cultures and protected classes, such as traditions, dress, gestures, and religions. The County looks to improve leadership skills across the organization to build diversity in our applicant pool in all areas of our employment structure.

The County's goal is to build positive systemic change that will benefit our residents for the long-term by building a broad and open-minded community that encourages diversity and inclusion.

- a. Goals: St. Lucie County recognizes the need to focus on the underserved and adversely affected within our community. We will continue to partner with local and national organizations that provide guidance and training to recognize our areas of weakness and improve our policies to be more inclusive and equitable. St. Lucie County Community & Business Engagement Coordinator will provide the community with a voice in the process to assure we are meeting the needs of the underserved groups in our community and strive for equitable outcomes for all our citizens.
- b. Awareness: St. Lucie County will continue to identify additional groups of underserved and adversely affected citizens within our County. Once identified the County will partner with more local community organizations and provide SLFRF funded service notifications.
- c. Access and Distribution: Program evaluation is being conducted.
- d. Outcomes: Program evaluation is being conducted.

## Community Engagement

Late 2019, St. Lucie County initiated a community based strategic planning process shortly preceding the COVID-19 pandemic. By engaging the services of The National Research Center to conduct a comprehensive community survey, surveyed The National Community Survey (NCS) community survey, measured residents' opinions within three pillars of a community (Community Characteristics, Governance and Participation) across eight central facets of community: Safety, Mobility, Natural Environment, Built Environment, Economy, Recreation and Wellness, Education and Enrichment and Community Engagement.



Informed by the results of the community survey, County Leadership and Strategic Planning Teams conducted a series of public workshops in addition to key external community stakeholder interviews were conducted. On March 10, 2020, at a Strategic Planning workshop, the Board of County Commissioners provided final consensus on the Vision, Mission, Goals and Objectives. The Board of County Commissioners formally approved the County's Strategic Plan vision, mission statement, and goals and objectives on June 2, 2020. Key goals include Foster Community Trust; Advance Opportunity; Environmental Stewardship and Resilient Infrastructure; Thriving Community; and Health and Safety.

## Labor Practices



St. Lucie County's follows CFR 200 for the procurement of all federally funded design and construction projects. Projects are advertised to a fair and open market without limitations to geographic location or other limiting language.

The County awards design projects to the most qualified firms through a short list and presentation format. Construction projects are awarded to the responsible responsive low bid firm. The County will make efforts to notify Disadvantage Business Enterprise (DBE), Minority Business Enterprise (MBE), and Women's Business Enterprises (WBE) to apply for infrastructure projects funded by SLFRF.

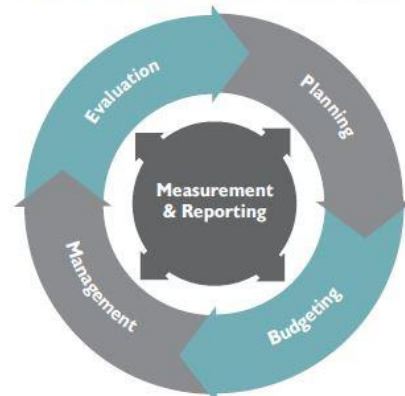
## Use of Evidence

The County is not currently incorporating evidence-based interventions or program evaluations into its use of the SLFRF funding. The bulk of the funding is being used to address critical infrastructure areas of need in the community with respects to drinking water and stormwater pollution control. If the Board, in conjunction with the community, decides funds should be used to address the types of projects that require these evaluations, the County will fully comply with all Federal guidelines.

## Performance Reporting

St. Lucie County initiated a performance management program six years ago, what began as an extension of the Budget Office, now has a dedicated staff of two within County Administration. The Innovation and Performance Team works with departments to refine their monthly operational performance measures toward best management practices and to achieve alignment with the County's Strategic Plan Objectives. On a quarterly basis, the team meets with the senior executives in County Administration to review departmental performance as reported monthly through the ClearPoint Strategy platform and provides a progress update toward implementation of the County's Strategic Plan. Where operational challenges are identified the lean six sigma approach is used to evaluate the issue and identify, where needed, process improvements or changes. In the Fall of 2023, performance reviews with County Administration and all Department Directors together will resume, these were suspended due to COVID-19.

The Performance Management Cycle





## Table of Expenses by Expenditure Category

Category		Cumulative expenditures to date (\$)	Amount spent since last Recovery Plan
1	Expenditure Category: Public Health	\$828,651.07	\$828,651.07
2	Expenditure Category: Negative Economic Impacts	\$1,612,407.01	\$1,612,407.01
3	Expenditure Category: Public Health-Negative Economic Impact: Public Sector Capacity	\$0	\$0
4	Expenditure Category: Premium Pay	\$0	\$0
5	Expenditure Category: Infrastructure	\$0	\$0
6	Expenditure Category: Revenue Replacement	\$690,178.69	\$690,178.69
7	Administrative	\$100,746.16	\$100,746.16

# PROJECT INVENTORY

## Expenditure Category 1 – Public Health

Project ARHEAL001: Vaccine Point of Dispensing (POD) events \$165,718

ARP Expenditure Category: 1.1 COVID-19 Vaccination

**Project Overview:**

St. Lucie County supported COVID-19 vaccine Point of Dispensing (POD) events known as vaccination clinics throughout the county to prevent the occurrence of, spread, and mortality caused by COVID-19 in underserved communities.

Project ID ARHEAL003: Vaccination Program-Personnel & Supplies \$664,410

ARP Expenditure Category: 1.1 COVID-19 Vaccination

**Project Overview:**

St. Lucie County Public Safety Department/Emergency Operations utilized temporary administrative staffing services and medical personnel from our Employee Health Clinic and St. Lucie County Fire District for additional staffing as needed to assist with administering vaccines throughout the community. In addition, Public Safety also maintained our county's vaccination supplies.

Project ARHEAL2619: Jail Medical Wing Expansion Study \$200,000

ARP Expenditure Category: 1.4 Prevention in Congregate Settings

**Project Overview:**

Conduct a study, preliminary design, and probable cost to determine the need for an expansion to the inmate medical facility at the St. Lucie County Correctional Facility at Rock Road. The operational preparedness, prevention, and management of COVID-19 in the St. Lucie County correctional facility presented significant challenges. St. Lucie County Sheriff's Office instituted prevention measures like good hygiene practices, increased cleaning and disinfecting, and social distancing. Once the virus was introduced into the facility, the St. Lucie County Sheriff's Office had to clinically manage persons with confirmed or suspected COVID-19 inside the facility while simultaneously preventing further virus transmission. This included medical isolation and care, limited or restricted movement in and out of the facility, and increased social distancing. While the correctional facility has an onsite medical unit, the need far exceeded current capacity as there was not sufficient space to implement effective medical isolation. As a result, persons had to be transferred offsite. This increased potential exposure risks and added patients to an already stressed local hospital system.



The study will determine what programs, enhancements, or expansions could be created to mitigate the spread of infectious disease. Some considerations will be the following: creation of space necessary to maintain the required separation during pandemic events, alternate care programs designed to keep specialty care in-house as to not overload the community health care facilities, and a new improved ventilation system in the expanded area that considers pandemic response. A successful study would reveal how to properly care for the inmate population on site without the need for burdening the community health care system.

### Project ARHEAL008: Vaccination Programs – Communications

\$321,299

ARP Expenditure Category: 1.7 Other COVID-19 Public Health Exp. Communications

#### **Project Overview:**

The development and implementation of a public outreach and communications initiative. Responding to an urgent need, St. Lucie County's Communications Division championed public outreach and communications.

The St. Lucie County Department of Health, a division of the Florida Department of Health, did not have a full-time Public Information Officer. In March of 2021, there was no state or federal communications plan. St. Lucie County staff developed a public outreach and communications initiative. This initiative included:

- Weekly video broadcasts of COVID-19 updates with the County's Public Safety Division, St. Lucie County School District, and health officials. These videos were televised on SLCTV (Comcast 28 / U-verse 99) and streamed live to Facebook.

- To meet the needs of Limited English Persons (LEP), Spanish and Haitian Creole translators provided translations of the messaging immediately following the English version. Additionally, a certified American Sign Interpreter signed the broadcast.
- The creation of a stand-alone website ([www.recoverstlucie.org](http://www.recoverstlucie.org)) focused on pandemic resources including COVID-19 testing sites, vaccine locations, and economic relief assistance including grants for small businesses, renters, and homeowners.
- A Vaccine Myth Busters Town Hall with local doctors and hospital officials.
- Press releases on COVID-19 testing and vaccination sites.
- Meetings with community groups and churches to extend outreach to underserved populations, including community-based vaccine clinics.
- Frequent and accurate content on the County's social media channels (Nextdoor, Facebook, Twitter, Instagram, and YouTube).
- The creation of an online application process to accept applications for small business assistance and rental assistance programs.
- Production of a dozen video Public Service Announcements (PSAs) with local community leaders and health officials.
- Print, radio, billboard, and television advertising and outreach.



### Project ARHEAL009: Enhance Employee Safety Broadcast System & IT Projects \$200,000

ARP Expenditure Category: 1.7 Other COVID-19 Public Health Exp. Communications

**Project Overview:**

As a result of the COVID-19 Pandemic, St. Lucie County was faced with enhancing our Employee Safety Broadcast System and other relevant IT improvements to allow County staff to maintain secure access from remote locations to serve the citizens of our community.

### Project ARHEAL010: Utilities Contactless Payment Kiosk \$84,000

ARP Expenditure Category: 1.7 Other COVID-19 Public Health Exp. Communications

**Project Overview:**

The Utilities Department recognized their customers had a challenge paying their Utility bills during COVID-19 pandemic. This payment kiosk technology will provide the customers the benefit of providing a real-time, contactless service to access their accounts and pay their bills.

### Project ID ARHEAL004: Mental Health – Veterans \$200,000

ARP Expenditure Category: 1.12 Mental Health Services

**Project Overview:**

St. Lucie County has allocated funding to support mental health needs in our Veteran’s community, through our Veterans Affairs Division.

**Project ARHEAL1905: Medical Examiner’s Office Needs Study** **\$200,000**

ARP Expenditure Category: 1.14 Other Public Health Services

**Project Overview:**

19th District Medical Examiner’s office works out of a leased space originally built in the 1970’s. During the COVID-19 Pandemic they found it was undersized and underequipped to handle the increased capacity. The facility serves four counties in the 19th District. Each of the Counties has dedicated funds to assist in the development of designs and plans for a new medical examiner facility. The first step is to complete a needs assessment to estimate size, scope and estimated cost to design the facility.

**Expenditure Category 2 – Negative Economic Impacts**

**Project ARECON003: Mortgage & Utility Assistance Program** **\$960,202**

ARP Expenditure Category: 2.2 Household Assistance: Rent, Mortgage, and Utility Aid

**Project Overview:**

St. Lucie County established a mortgage and utility assistance program for struggling households. The program was open to all residents from the unincorporated County and both cities.

**Project ID ARINFR44008: Fiber Broadband / Digital Access** **\$3,115,112**

ARP Expenditure Category: 2.4 Household Assistance: Internet Access Programs

**Project Overview:**



**DigitalAccess**

St. Lucie County recognizes the need for access to reliable broadband and internet services for our entire community. The County is working closely with local providers, St. Lucie County School District, and other community partners to determine the areas of maximum impact to provide for unserved and underserved residents in need of broadband access. The County's intention is to meet the speeds as defined in the Final Rule.

The County will partner with Fort Pierce Utilities Authority to assist with a Smart Neighborhood Initiative being developed in the Lincoln Park area.

\$2.9 million of the funding will be used by the St. Lucie Education Foundation to assist the St. Lucie School District with providing a digital access program for our most unserved and underserved students and families throughout the County.

Project ARECON004: Housing Hub

\$500,000

ARP Expenditure Category: 2.16 Long-term Housing Security: Services for Unhoused persons

**Project Overview:**



St Lucie County is providing funding to the Housing Hub through the Treasure Coast Homeless Services Council, the lead agency for the Continuum of Care. The Housing HUB is a Multi-Agency Resource Center that operates a men’s residential program that serves unaccompanied men experiencing chronic, street homelessness in St. Lucie County. Participants in this program receive mental health and substance abuse evaluation, housing and stabilization services, benefit applications, housing counseling and referral to medical and mental health providers.

Project ARECON005: Housing Needs Assessment

\$150,000

ARP Expenditure Category: 2.15 Long-term Housing Security: Affordable Housing

**Project Overview:**

St, Lucie County recognizes the need to assess the affordable housing needs of our community. The assessment will identify the affordable housing needs of low-income families and seniors, special needs households, and homeless persons in our community.



Project ARHEAL006: Comprehensive Homelessness Plan - TCHSC

\$50,000

ARP Expenditure Category: 2.16 Long-term Housing Security: Services for Unhoused persons

**Project Overview:**

During the pandemic the County supplied additional funds to agency partners essential to addressing unmet needs in our community. We aid our vulnerable population through several local agencies that include the Treasure Coast Homeless Services Council, the Cultural Alliance, and the St. Lucie Health Department.

Project ARECON001: Small Business Assistance Program

\$971,718

ARP Expenditure Category: 2.29 Loans or Grants to Mitigate Financial Hardship

**Project Overview:**

St. Lucie County established a Small Business Assistance Program to support local business in need of economic support to recover from the pandemic.

~~CANCELED Project (To be Determined): Solid Waste Collection Support~~

~~\$523,000~~

~~ARP Expenditure Category: 2.9 Aid to Other Impacted Industries~~

When the Final Rule was published January 27, 2022, St. Lucie County re-evaluated this expenditure, found it was outside the eligible performance period and deemed it non-compliant. The County reclassified the expenditure to be paid with the County’s general fund and reallocated the ARPA funds toward other eligible projects.

## **Expenditure Category 5 – Infrastructure**

Project ARINFR203604: North Hutchinson Island (NHI) Septic to Sewer \$1,000,000

ARP Expenditure Category: 5.2 Clean Water: Centralized Wastewater Collection & Conveyance

### **Project Overview:**

Project consists of constructing a wastewater collection system on North Hutchinson Island. The system will connect approximately five hundred thirty-two homes to central sewer and take legacy septic tanks and drain fields out of service. The neighborhoods included are Queens Cove, Fort Pierce Shores, Coastal Cove Unit I, and Coral Cove. North Hutchinson Island is bordered to the west by the Indian River Lagoon and eliminating these significant number of septic tanks from the barrier island provides an environmentally responsible solution to reduce the nutrient load in our outstanding Florida waterway.



The County will contribute 7% of the project cost and the homeowners will fund the balance through the County’s Municipal Service Benefit Unit (MSBU) with a total estimated project cost of \$15,000,000.

Sea level in combination with king tide events have caused increased flooding and septic tank seepage, resulting in mobilization of fecal coliform bacteria, nutrients, and other contaminants. Enhancing the current sewer system through additional force mains and repump stations will increase Public Utility’s capacity in managing wastewater in additional areas throughout the County. Expanding sewer lines and converting septic systems to centralized sewer will ameliorate immediate issues of contamination of waterways and enhance human and environmental resiliency in both coastal and inland portions of the County.

~~Project (Being Reallocated to Another Utility Project): Midway Road Corridor Force Main and Repump Station – Fairgrounds to Okeechobee \$3,600,000~~

~~Project (Being Reallocated to Another Utility Project): Midway Road Corridor Force Main and Repump Station – Proposed Wave Park to Okeechobee \$1,000,000~~



Project ARINFR213613: North County Regional Deep Injection Well

\$8,000,000

ARP Expenditure Category: 5.5 Clean Water: Other Sewer Infrastructure

**Project Overview:**



The project consists of design, permitting and construction of a deep injection well at the Taylor Dairy Road North County Regional Water and Wastewater Treatment site. This could be a stand-alone project or part of the plant(s) design.

The deep injection well would be used for demineralized concentrate and non-spec effluent disposal only when necessary.

Sea level in combination with king tide events have caused increased flooding and septic tank seepage, resulting in mobilization of fecal coliform bacteria, nutrients, and other contaminants. Enhancing the current sewer system through additional force mains and repump stations will increase Public Utility’s capacity in managing wastewater in additional areas throughout the County. Expanding sewer lines and converting septic systems to centralized sewer will ameliorate immediate issues of contamination of waterways and enhance human and environmental resiliency in both coastal and inland portions of the County.

Project ARINFR213624: Ancient Oak Preserve Wet Pond

\$1,000,000

ARP Expenditure Category: 5.6 Clean Water: Stormwater

**Project Overview:**

The County owns a 1.7-acre parcel along Oleander Avenue in the Ancient Oak Preserve/Weldon B. Lewis Park. The southwest corner of the property is reserved to add stormwater treatment in the area, as the existing ditches do not have any treatment prior to entering the North Fork of the St. Lucie River. A retention pond has been identified to provide stormwater runoff treatment. For the purposes of this assessment, a wet pond with a 14-day residence time was used.



The project will include design, permitting and construction of the pond that will meet County requirements for littoral zones and upland buffer planting.

As temperatures increase and storms in South Florida continue to grow in size, the need for capacity to hold larger levels of stormwater runoff has become a major need. This project addresses this need for increased capacity as it will hold and treat large amounts of stormwater before entering the Ten Mile Creek system.

Project ARINFR213625: Harmony Heights-Phase 3

\$3,606,363

ARP Expenditure Category: 5.6 Clean Water: Stormwater

**Project Overview:**

The goal of the project is to construct dry detention ponds and associated swales in the Harmony Heights subdivision, a 228-acre basin. Due to the age of the area, the subdivision currently lacks an overall stormwater management system. The project will provide water quality benefits by intercepting and treating unregulated stormwater runoff. This is a continuation of a project which will have Phase 2 completed in June 2021.

The project consists of completing survey, design, permitting and construction of system to reduce nutrients from this subdivision. As temperatures continue to increase and sea levels rise, there is a need to improve drainage infrastructure systems to help eliminate flooding in St. Lucie’s older neighborhoods. This project will increase drainage capacity and improve water quality in the Harmony Heights neighborhood via the construction of detention ponds and new and improved swales and driveway culverts.

Project ARINFR213628: Baffle Box Program - River Park

\$835,000

ARP Expenditure Category: 5.6 Clean Water: Stormwater

**Project Overview:**



Located west of and along the North Fork of the St. Lucie River, River Park is an existing single-family subdivision on aging septic systems. This area has shallow swales that convey stormwater directly into tidal waters of the Ten Mile Creek System with little to no pre-treatment. The project consists of completing survey, design, permitting and construction of a second-generation baffle boxes.

As temperatures continue to increase and sea levels continue to rise, there is a need in St. Lucie County to prepare resilient projects in preparation of these future changes. One major concern is the increase of direct runoff into our natural conveyance system and the influence this will have on nutrient levels. This project will help alleviate the influence of direct runoff by improving stormwater infrastructure and catching contaminants before they reach the system.

Project ARINFR213627: Hog Pen Slough Stormwater Treatment Area

\$1,000,000

ARP Expenditure Category: 5.6 Clean Water: Stormwater

**Project Overview:**

The project seeks to design and construct a stormwater treatment area (STA) to capture and treat flows out of Hog Pen Slough prior to discharge to the North Fork. Flows out of Hog Pen have been found to contain high levels of nitrogen and fecal coliform. This regional facility would be a partnership between the City of Port St. Lucie and St. Lucie County. The City owns an 11-acre parcel and the County would participate in funding towards design and construction of the project.

As sea levels continue to rise, the need to convey clean, treated, runoff to St. Lucie County's conveyance system will take on greater importance. Hog Pen Slough is one of our most important eastern drainage ditches and delivers water from the southeastern part of the County to the St. Lucie River. However, this runoff is presently untreated, and has shown to contain high levels of contaminate. This project will help reduce nutrients from Hog Pen Slough waters before they reach the St. Lucie system.

### Project ARINFR213626: Indrio Savannahs Wet Pond

\$1,500,000

ARP Expenditure Category: 5.6 Clean Water: Stormwater

#### **Project Overview:**

Indrio Savannahs is a preserve that contains a natural flow-way that connects the northernmost lands in St. Lucie County to Taylor Creek. An existing lake is currently bypassed and could be connected and augmented with BMPs to provide nutrient reductions. This project includes design, permitting and construction of a treatment pond that could include gabion walls strategically placed to increase the tortuosity (length of the flow path) to promote additional nutrient removal.



The northeastern section of St. Lucie County has some of the oldest and poorest drainage infrastructure in the County. This is a very large drainage basin that flows directly from mobile home parks and industrial areas to Taylor Creek and then directly to the Indian River Lagoon. As temperatures and storms continue to increase this direct runoff will also continue to increase and have detrimental effects on our natural systems. This project will help reduce nutrient loading and increase stormwater capacity.

### Project ARINFR143602: Indian River Estates-Phase III

\$3,616,704

ARP Expenditure Category: 5.6 Clean Water: Stormwater

#### **Project Overview:**

This project seeks to construct Phase 3 of Indian River Estates Project. The phase will build on the improvements initiated under previous phases by evaluating the drainage along Easy Street and providing recommendations to reduce road flooding during heavy rain events. Also, addressing

the interaction of flow between Indian River Estates and the Savannas and evaluating options to reduce / prevent backflow from the Savannas. To address these main elements, a preliminary engineering analysis is to be completed that will evaluate different alternatives to improve the flood level of service.

Indian River Estates sits adjacent to one of St. Lucie County’s largest wetland systems, the Savannas. As sea levels continue to rise resiliency will become an extremely important term for those living in this community. There is a need to improve drainage in this area as it already floods heavily during tropical events. This project will look to address the drainage infrastructure in Indian River Estates in preparation of future sea level rise.

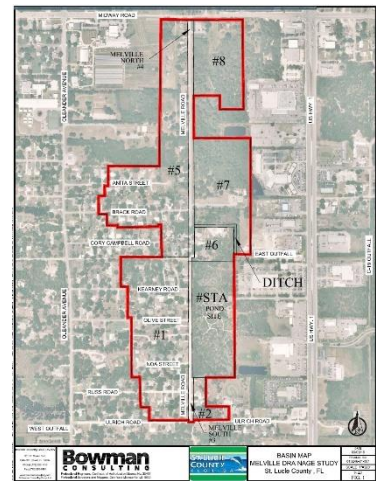
**Project ARINFR213622: Melville Road Stormwater Improvement-Phase 2     \$1,500,000**

ARP Expenditure Category: 5.6 Clean Water: Stormwater

**Project Overview:**

The project includes drainage from a 175-acre residential neighborhood on aging septic systems that is in the historic area of White City. The project consists of design, permitting and construction of the second phase of the Melville Project. The 8.8-acre parcel will be used to construct a large stormwater treatment pond with native plantings and passive recreation.

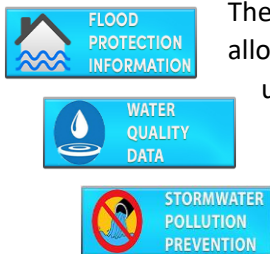
White City is one the poorest draining neighborhoods in St. Lucie County. Built on low elevations, the area also sits adjacent to the tidally influenced Ten Mile Creek and is susceptible to flooding when the Creek rises. These issues are only expected to exacerbate as temperatures increase and sea levels continue to rise. This project looks to address these issues as a large stormwater retention area will be constructed.



**Project ARINFR174608: Stormwater Master Plan     \$2,500,000**

ARP Expenditure Category: 5.6 Clean Water: Stormwater

**Project Overview:**



The last County-wide plan was developed in the 1990’s. Such a document allows for a better understanding of overall County infrastructure, a better understanding of how the County drains, and a stronger knowledge of historical County efforts. The plan would include a current inventory and census of all County surface water infrastructure, a digital elevation model with up-to-date topographic data, and a hydraulic and hydrographic (H&H).

Located along Florida’s east coast, St. Lucie County has begun preparation to begin to address sea level rise and County resiliency. A resiliency team has been hired and major grant-based work has begun. The key element to preparing for County climate change is the development of an updated



stormwater plan that will address future environmental change and modern County drainage patterns. This project is of the utmost importance for future County resilience.

Project ARINFR213623: Sunland Gardens Retrofit

\$500,000

ARP Expenditure Category: 5.6 Clean Water: Stormwater

**Project Overview:**

Sunland Gardens is a 425-acre single family residential community. Developed and built decades ago the community predates stormwater regulations and has homes that are low lying and poorly draining roads. The area needs an overall drainage improvement. This project would include performing a survey, developing an overall drainage master plan for the Sunland Gardens Community and to identify basin limits to work towards a multi-phased restoration plan.

Sunland Gardens is one of North County’s oldest neighborhoods and was built before stormwater infrastructure was required. Located adjacent to Taylor Creek, the community is prone to flooding and this problem will continue to increase as temperatures and water levels rise. This project will address the need to prepare Sunland Gardens for future floods and improve its overall resiliency towards sea level rise by preparing an overall drainage master plan for future community improvements.

Project ARINFR213629: Ten Mile Creek Oxbow Restoration at George LeStrange Preserve

\$1,790,000

ARP Expenditure Category: 5.6 Clean Water: Stormwater

**Project Overview:**

Ten Mile Creek is a natural system that drains nearly 90 square miles of the County. The Creek will receive discharge from the Indian River Lagoon-South CERP projects. Ten Mile Creek is sorely in need of maintenance to allow for the proper conveyance of water to protect from flood peril. Project will include dredge and removal of muck, spoil, and accumulated vegetation from the project area, effectively restoring +/- 2,000 linear feet of Ten Mile Creek within the George LeStrange Preserve.

An historic oxbow will also be restored, thus allowing for greater conveyance and water quality improvements.



Ten Mile Creek is a natural system that conveys much of the County’s water east to the Atlantic Ocean. After years of no maintenance the Creek can no longer convey the amount of water needed during storm events to keep residents from flooding. With sea level rise as a concern, the

County is making major efforts to improve Creek flow in preparation on increased capacity needs. This project will address future capacity by restoring an historic oxbow.

Project ARINFR213607: Indrio Road Water Main Completion \$1,150,000

ARP Expenditure Category: 5.11 Drinking Water: Transmission Distribution

**Project Overview:**



This project consists of revising the existing design and permitting of 9,000 lineal feet of 12” water main along Indrio Road from Taylor Dairy Road west to Emerson Avenue. After design completion the County will construct this portion of the water distribution system to provide reliable service to the western portion of the corridor.

Groundwater and surface water are intimately linked and sensitive to potential changes in precipitation, temperature, and sea level rise. Saltwater intrusion is an especially significant potential threat to public wells, and for those who depend on private wells as their primary source for potable water. Providing a potable water source for these residents is a priority in the County’s resilience planning efforts, supporting the health of citizens, the economy, and the environment.

Project ARINFR213615: Lakewood Park Potable Water Initiative \$2,000,000

ARP Expenditure Category: 5.11 Drinking Water: Transmission Distribution

**Project Overview:**

The project consists of completing survey, design, permitting and construction of a water distribution system throughout the Lakewood Park Subdivision. This project will provide the residents of the Lakewood Park Community a potable water source provided through St Lucie County Utilities. The water provided is considered an alternative water source withdrawn from the Upper Floridan aquifer. Connecting to the safe potable water source will still allow customers use of their existing wells for irrigation purposes



The County will contribute 10% of the project cost and the residents will fund the balance through the County’s Municipal Services Benefit Unit (MSBU) with a total estimated project cost of \$20,000,000.

Groundwater and surface water are intimately linked and sensitive to potential changes in precipitation, temperature, and sea level rise. Saltwater intrusion is an especially significant potential threat to public wells, and for those who depend on private wells as their primary source for potable water. Providing a potable water source for these residents is a priority in the County’s resilience planning efforts, supporting the health of citizens, the economy, and the environment.



Project ARINFR213609: North U.S. Highway 1 Water Main Extension \$300,000

ARP Expenditure Category: 5.11 Drinking Water: Transmission Distribution

**Project Overview:**



The project consists of design, permitting and construction 3,200 lineal feet of 8" water main along the northern most section of the County's service area on U.S. Highway 1 from the Turnpike Feeder Road north to the County line. This project will make available municipal potable water service to properties currently on wells. The County has a goal to provide service to the underserved community of Cypress Bay Mobile Home Park.

In addition, this project will encourage economic growth along this portion of U.S. Highway 1 and bring job opportunities to the community.

Groundwater and surface water are intimately linked and sensitive to potential changes in precipitation, temperature, and sea level rise. Saltwater intrusion is an especially significant potential threat to public wells, and for those who depend on private wells as their primary source for potable water. Providing a potable water source for these residents is a priority in the County's resilience planning efforts, supporting the health of citizens, the economy, and the environment.

Project (Being Reallocated to Another Utility Project): ~~Midway Road and Okeechobee Road Corridors Water Main Loop~~ \$5,350,000

Project ID (Being Reallocated to Another Utility Project): ~~North to South Service Area Connection (16" Main)~~ \$5,600,000

Project (Being Reallocated to Another Utility Project): ~~North to South Service Area Connection (12" Main)~~ \$5,100,000

Project ARINFR213608: North County Regional Upper Floridan Aquifer Raw Water Supply Well \$1,000,000

ARP Expenditure Category: 5.13 Drinking Water: Source

**Project Overview:**

The project consists of design, permitting and construction of a second well and well head to access the upper Floridan aquifer as a raw water supply for the Taylor Dairy Road North County Regional Water and Wastewater Treatment site. This second well is required for redundancy of the water system. This could be a stand-alone project or part of the plant(s) design.



Groundwater and surface water are intimately linked and sensitive to potential changes in precipitation, temperature, and sea level rise. Saltwater intrusion is an especially significant potential threat to public wells, and for those who depend on private wells as their primary source for potable water. Providing a potable water source for these residents is a priority in the County's resilience planning efforts, supporting the health of citizens, the economy, and the environment.

## **Expenditure Category 6 – Revenue Replacement**

Project ARREV1: General Government Services \$4,154,346

ARP Expenditure Category: 6.1 Provision of Government Services

### **Project Overview:**

St. Lucie County elected to use the US Treasury's standard allowance for revenue replacement in the amount of \$10,000,000.00. The ARP Reserves / COVID Set Aside funding in the amount of \$3,464,167 qualifies for use under general government services as defined in the US Treasury's Final Rule. 6/7/2022 the Board approved reclassification of IT Technology Upgrades and Facility expenses in the amount of \$690,178.69 from General Fund One-Time Fund 001009.

## **Expenditure Category 7 – Administrative and Other**

Project ARHEAL007: Legislative Affairs - Grant Coordinator Position and Compliance Review \$708,532.00

ARP Expenditure Category: 7.1 Administrative Expense

### **Project Overview:**

St. Lucie County hired a dedicated Grant Coordinator for monitoring and oversight of the County's American Rescue Plan Act (ARPA) Program. This position has been funded for a term of five years. The position will oversee the County's American Rescue Plan Act (ARPA) funding and will handle the administration, compliance, and reporting of ARPA - Local Fiscal Recovery Funds and coordinate tracking of all ARPA funding the County may receive through other grant sources. The adopted budget includes salary, benefits, supplies and equipment necessary to fulfill the role. Funding has also been provided for process compliance review.