

Table 1

Major Labor Market Indicators in the United States, 1989 to 2009								
	Levels (thousands)				Change (thousands)			
	Dec 89	Dec 99	Dec 07	Dec 09	Dec 89 to Dec 99	Dec 99 to Dec 07	Dec 07 to Dec 09	Dec 99 to Dec 09
Payroll Employment	108,809	130,532	137,951	129,588	21,723	7,419	-8,363	-944
Population*	187,165	211,323	231,265	236,337	24,158	19,942	5,072	25,014
Labor Force, pop adj	124,497	141,790	152,636	152,809	17,293	10,846	173	11,019
Household Employment, pop adj	117,830	136,092	145,003	137,548	18,262	8,911	-7,455	1,456
Male	64,499	71,953	78,239	72,499	7,454	6,286	-5,740	546
Female	53,331	62,571	67,934	65,293	9,240	5,363	-2,641	2,722
	Annual Average				Change in Average Annual Level			
	1989	1999	2007	2009	1989 to 1999	1999 to 2007	2007 to 2009	1999 to 2009
Labor Force Participation Rate	66.4	67.1	66.1	65.4	0.6	-1.0	-0.7	-1.7
Employment-to-Population Ratio	62.9	64.3	63.0	59.3	1.3	-1.3	-3.7	-4.9
Male	72.4	71.7	69.8	64.6	-0.8	-1.9	-5.2	-7.1
Female	54.3	57.4	56.6	54.4	3.1	-0.8	-2.2	-3.0
16-19 years	47.5	44.7	34.8	28.4	-2.8	-9.9	-6.5	-16.4
20-24 years	71.9	71.7	68.4	62.2	-0.1	-3.4	-6.2	-9.5
25-54 years	79.9	81.4	79.9	75.8	1.5	-1.5	-4.1	-5.6
55+ years	29.4	31.0	37.4	37.3	1.6	6.4	-0.1	6.4

*Population derived using employment population ratio and population adjusted employment.

Notes: Labor force, household employment and population for December 1989 are not adjusted for population changes. Annual average labor force participation rate and employment-to-population ratios are calculated as averages of seasonally adjusted monthly data. Changes in the average annual level are calculated from unrounded annual averages.

Figure 1

Total Nonfarm Payroll Employment: 1940-2010
in millions, seasonally adjusted

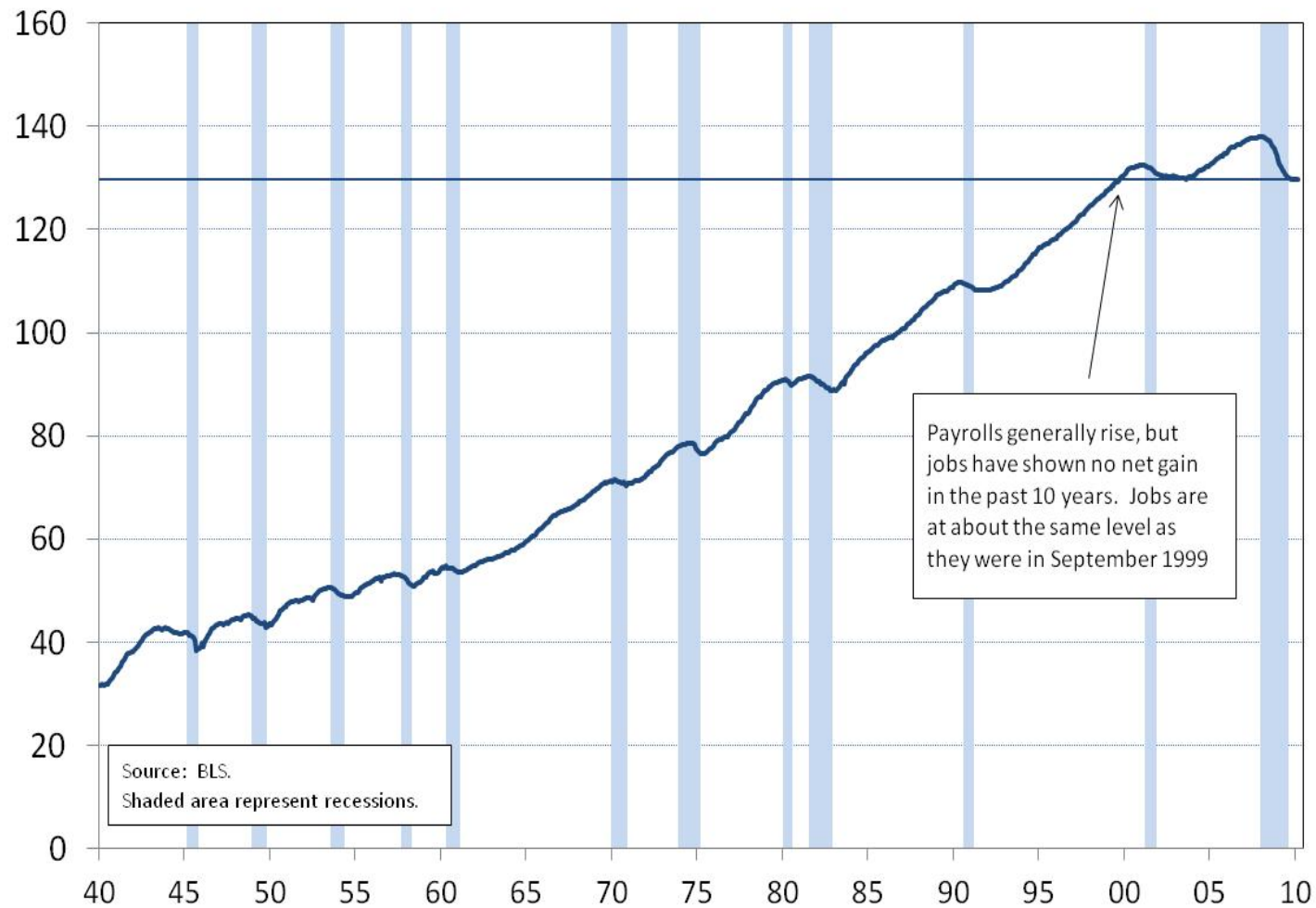


Figure 2

Civilian Employment-to- Population Ratio: 1948-2010
percent, seasonally adjusted

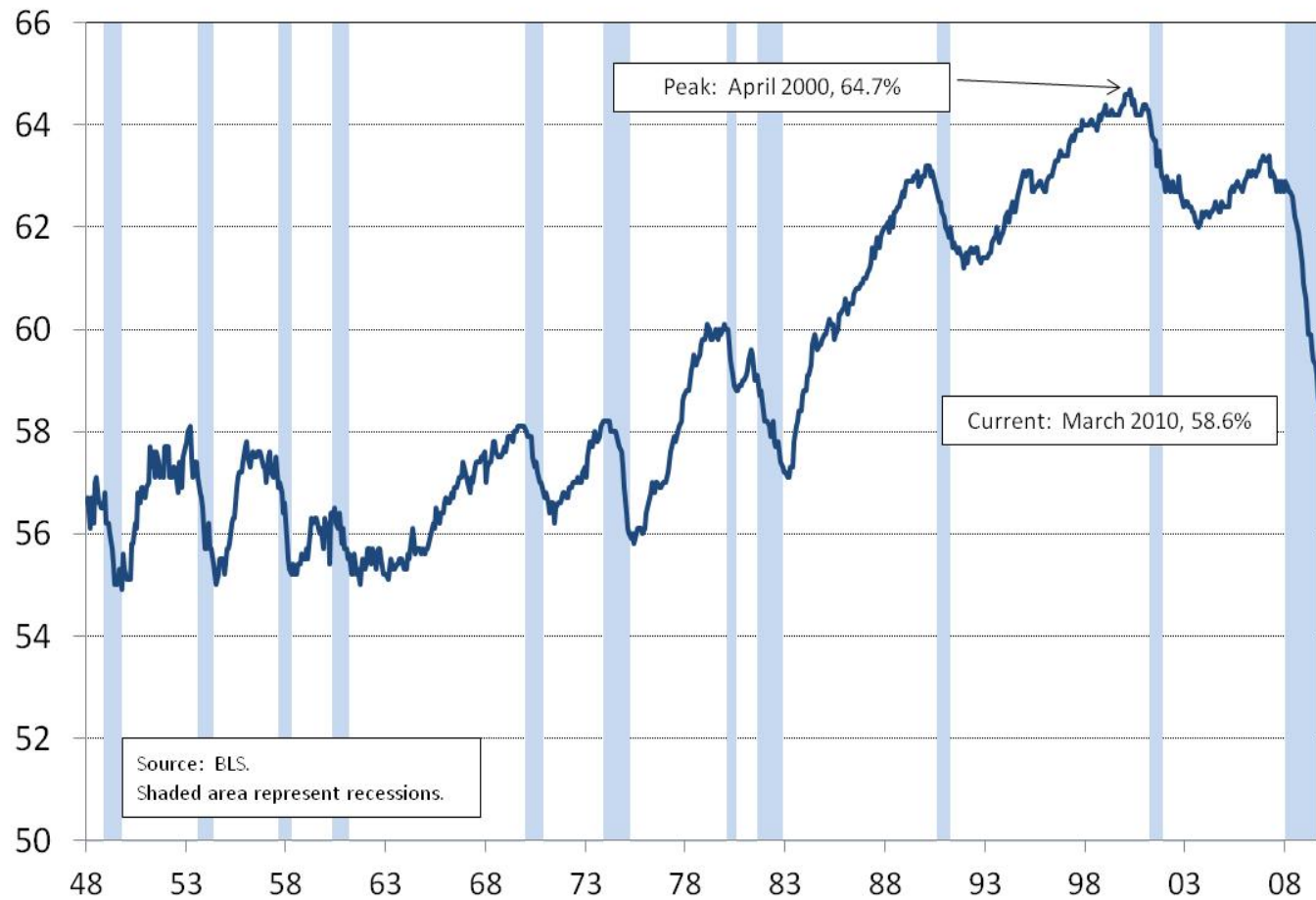


Table 2

Major Labor Market and Growth Indicators in Canada, 1989 to 2009								
	Levels (thousands)				Change (in thousands)			
	Dec 89	Dec 99	Dec 07	Dec 09	Dec 89 to Dec 99	Dec 99 to Dec 07	Dec 07 to Dec 09	Dec 99 to Dec 09
Payroll Employment *	--	12,203	14,653	14,532	--	2,450	-121	2,330
Population	21,039	23,920	26,720	27,491	2,881	2,799	771	3,571
Labor Force	14,154	15,673	18,089	18,437	1,518	2,416	348	2,765
Household Employment	13,070	14,615	17,007	16,881	1,546	2,392	-126	2,266
Male	7,305	7,940	8,973	8,778	635	1,033	-195	838
Female	5,765	6,676	8,034	8,104	911	1,359	70	1,428
	Annual Average (percent)				Change in Annual Average (percentage points)			
	1989	1999	2007	2009	1989 to 1999	1999 to 2007	2007 to 2009	1999 to 2009
Employment-to-Population Ratio	62.2	60.6	63.5	61.7	-1.6	2.9	-1.8	1.1
15-19 years	51.7	41.0	47.0	42.2	-10.6	5.9	-4.8	1.2
20-24 years	73.9	68.4	71.5	68.0	-5.5	3.1	-3.5	-0.4
25-54 years	78.2	79.2	82.2	80.3	1.0	3.0	-1.9	1.1
55+ years	24.7	23.7	31.7	32.9	-1.1	8.0	1.2	9.2

* Payroll employment data for Canada not available before March 1994.

Source: Statistics Canada/Haver

Table 3

Major Labor Market Indicators in the United Kingdom, 1989 to 2009								
	Levels (thousands)				Change (in thousands)			
	Dec 89	Dec 99	Dec 07	Dec 09	Dec 89 to Dec 99	Dec 99 to Dec 07	Dec 07 to Dec 09	Dec 99 to Dec 09
Payroll Employment *	28,471	28,945	31,143	30,273	474	2,198	-870	1,328
Population	44,805	46,028	48,842	49,613	1,223	2,814	771	3,585
Labor Force	28,901	29,003	31,011	31,363	102	2,008	352	2,360
Household Employment	26,880	27,319	29,398	28,905	439	2,079	-493	1,586
Male	15,200	14,843	15,897	15,393	-357	1,054	-504	550
Female	11,680	12,476	13,501	13,512	796	1,025	11	1,036
	Annual Average				Change in Annual Average			
	1989	1999	2007	2009	1989 to 1999	1999 to 2007	2007 to 2009	1999 to 2009
Employment-to-Population Ratio	59.8	59.1	60.0	58.6	-0.6	0.9	-1.4	-0.6
Male	70.4	66.8	66.8	64.3	-3.7	0.0	-2.5	-2.5
Female	49.9	52.0	53.6	53.2	2.2	1.5	-0.4	1.1
16-17 years**	47.2	46.7	33.7	27.7	-0.5	-13.0	-6.1	-19.0
18-24 years**	64.9	67.4	64.8	59.5	2.4	-2.5	-5.4	-7.9
25-59(f)/64(m) years**	73.1	76.4	78.5	77.6	3.3	2.1	-0.9	1.2
60+(f)/65+(m) years**	7.9	7.9	11.0	12.0	0.0	3.1	1.0	4.1

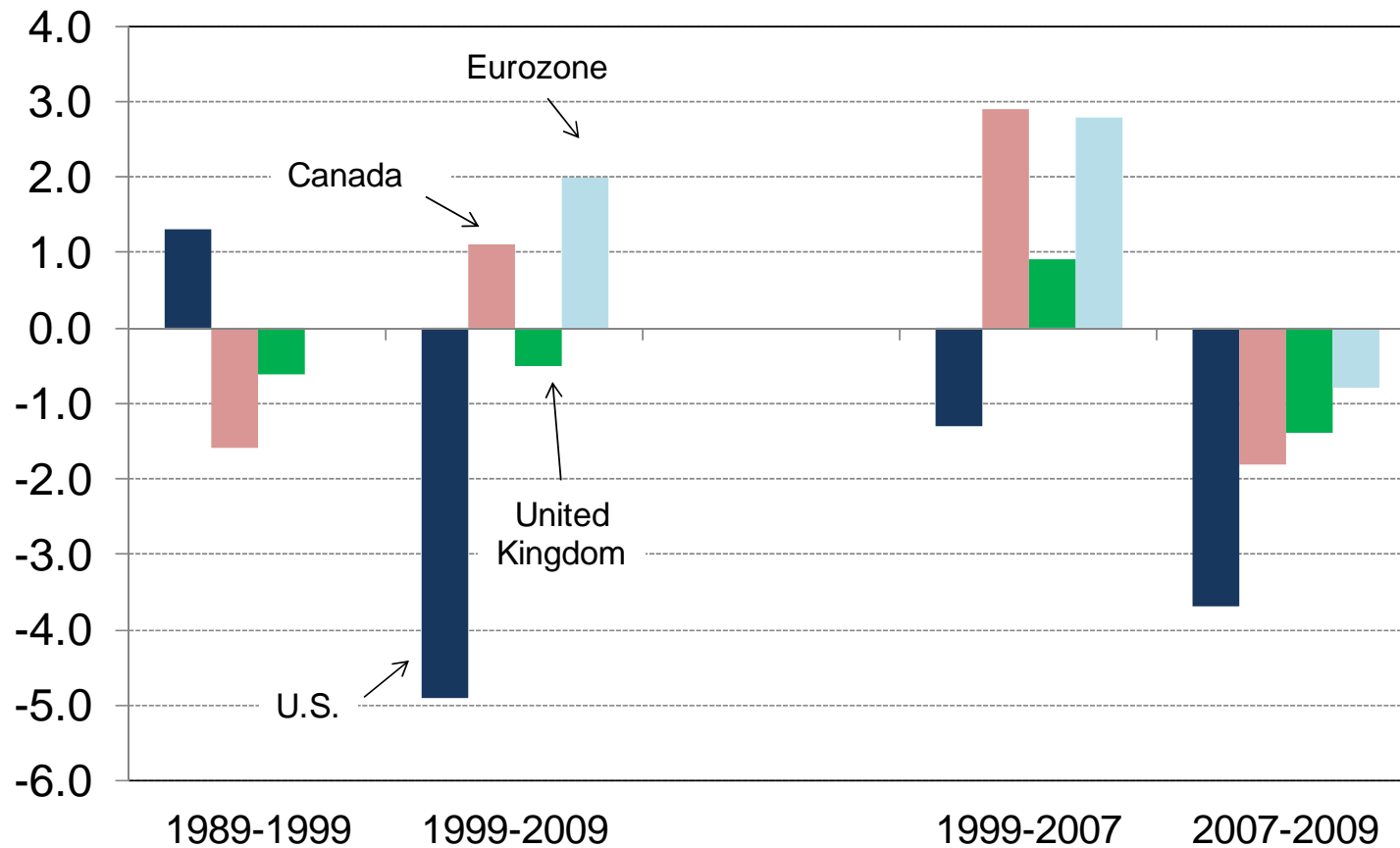
* Payroll employment data for the UK is quarterly.

** Data are not available before 1992.

Source: Office of National Statistics/Haver

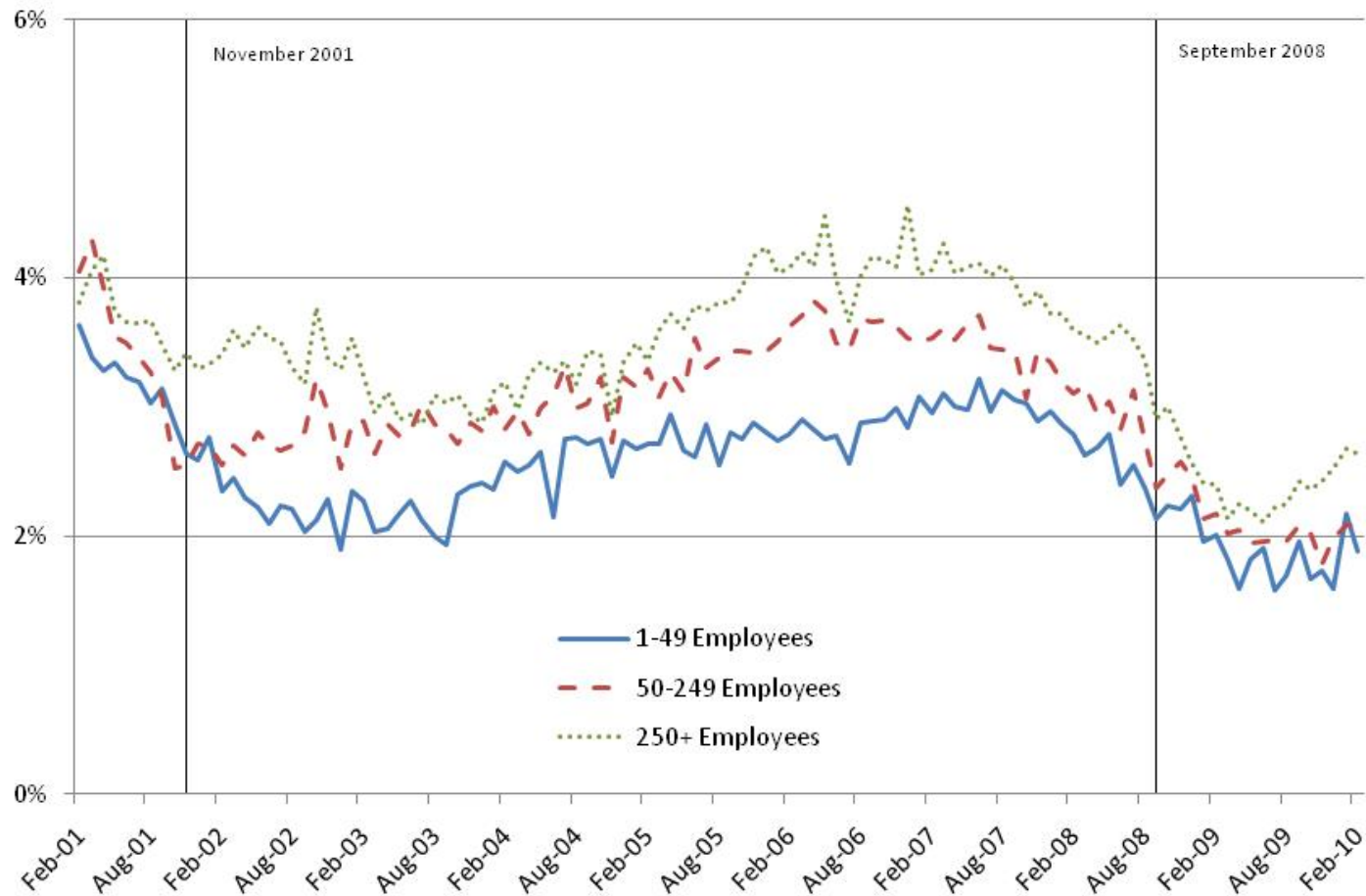
Figure 3

Change in Employment Population Ratios, 1989-2009
percentage points



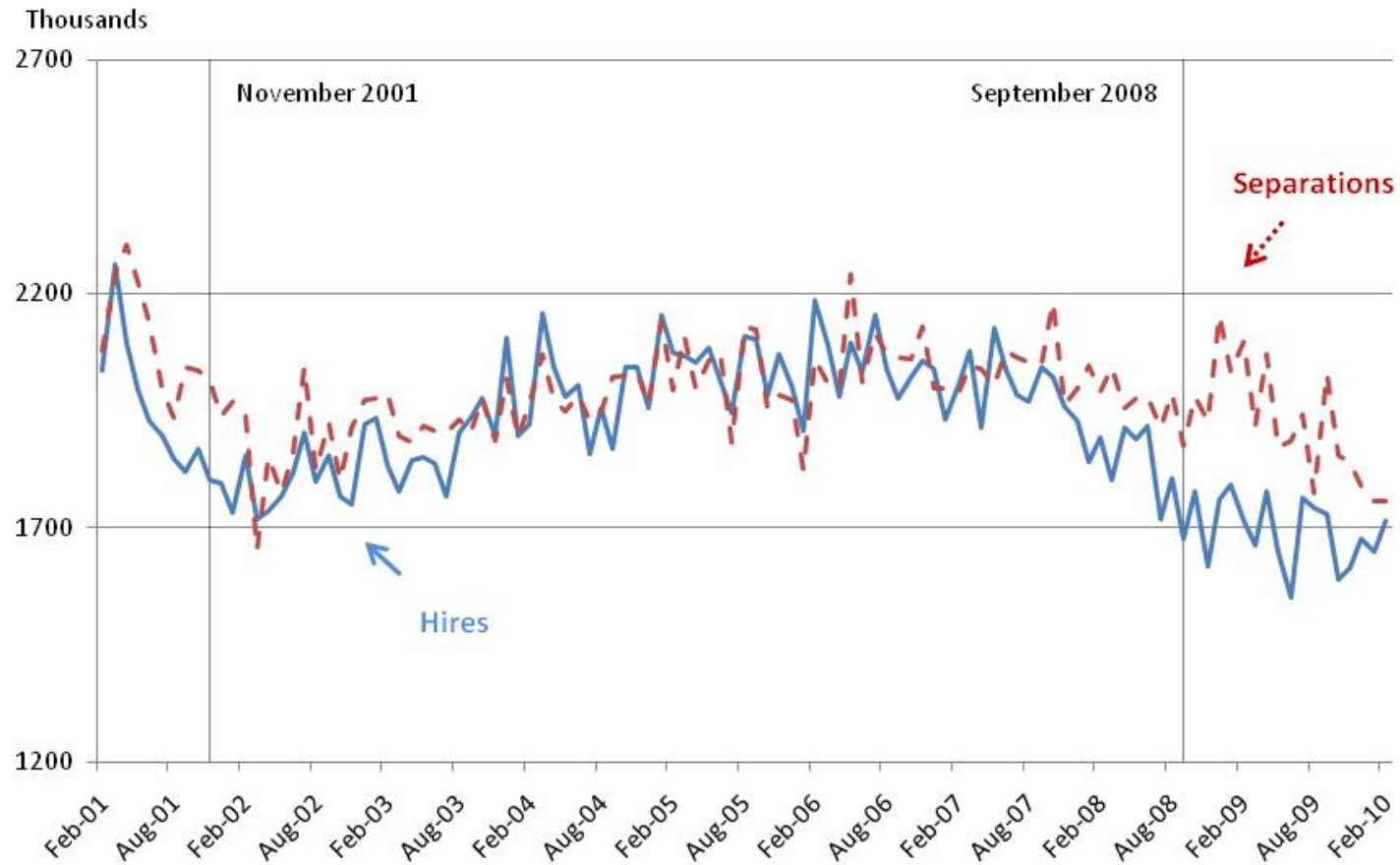
* Data not available for Eurozone 1989-1999. Eurozone data available only through 2009Q3

Figure 4
Job Openings Rate



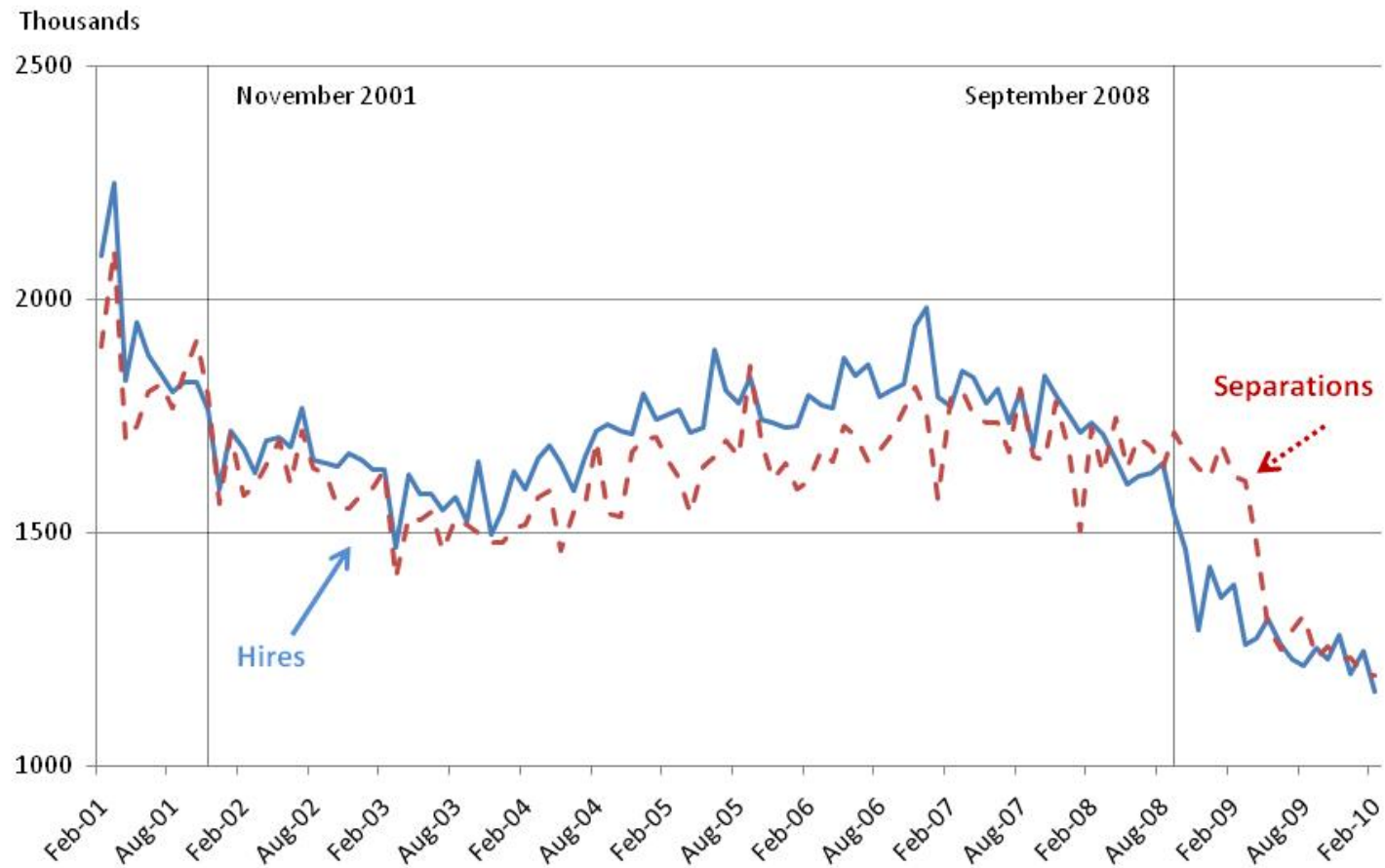
Note: Job Openings as a percent of employment plus job openings. Seasonally Adjusted. December 2000 – February 2010. Job Opening and Labor Turnover program: unpublished research data provided by BLS.

Figure 5
Total Hires & Separations by Establishment Size Class
Establishments with 1-49 Employees



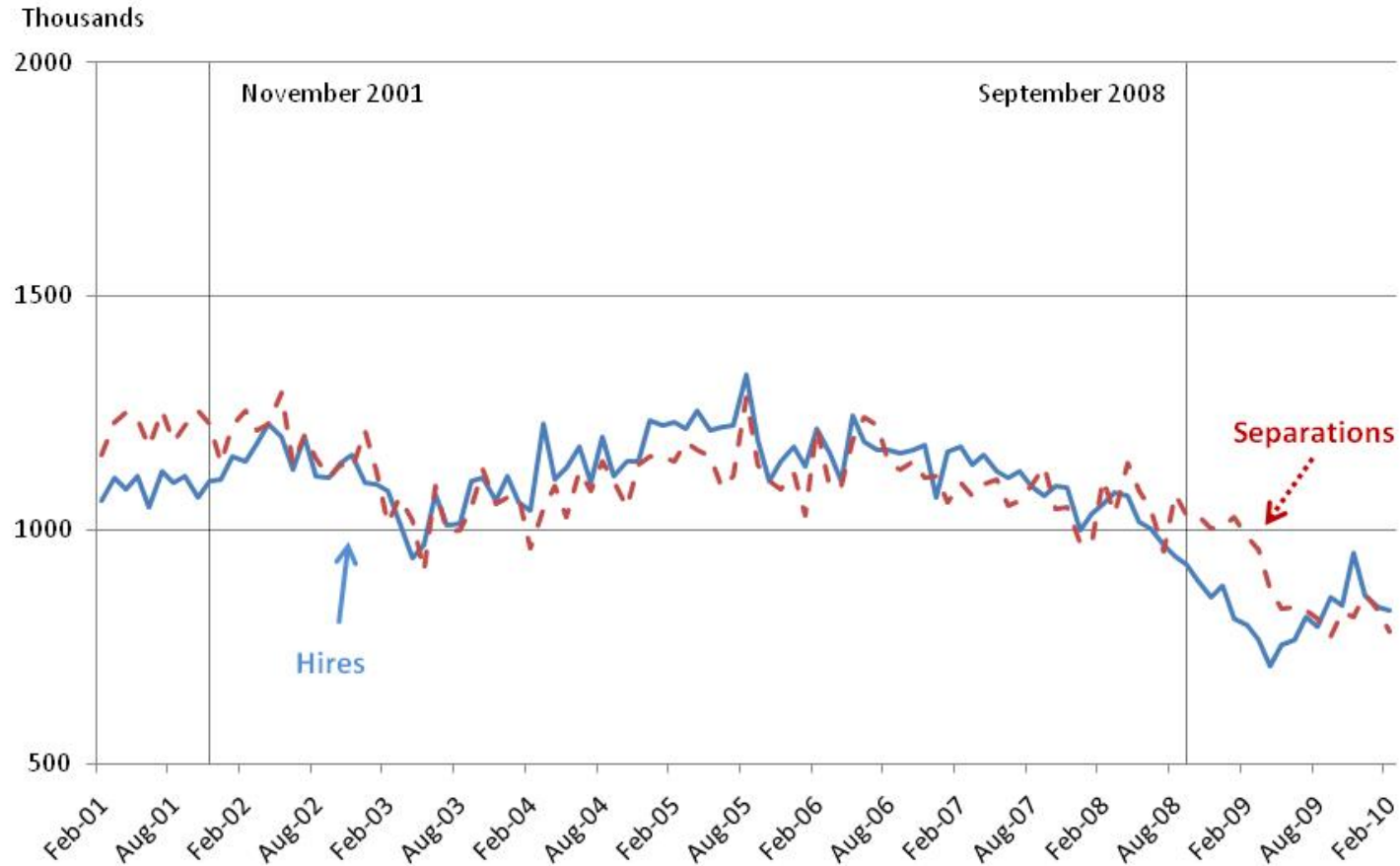
Note: Gross Hires and Gross Separations as a percent of employment. Seasonally Adjusted. December 2000 – February 2010. Job Opening and Labor Turnover program: unpublished research data provided by BLS.

Figure 6
Total Hires & Separations by Establishment Size Class
Establishments with 50-249 Employees



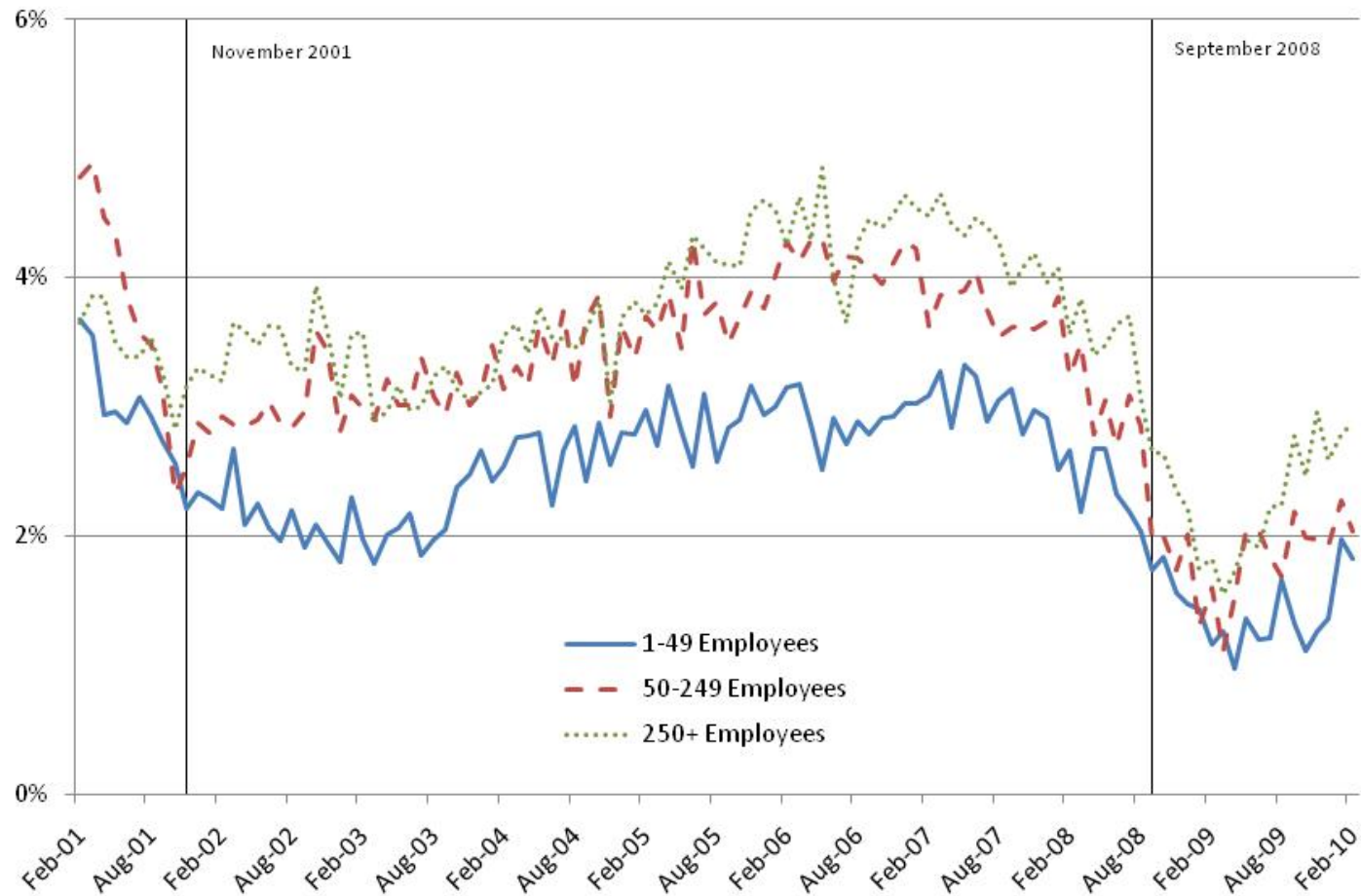
Note: Gross Hires and Gross Separations as a percent of employment. Seasonally Adjusted. December 2000 – February 2010. Job Opening and Labor Turnover program: unpublished research data provided by BLS.

Figure 7
Total Hires & Separations by Establishment Size Class
Establishments with 250+ Employees



Note: Gross Hires and Gross Separations as a percent of employment. Seasonally Adjusted. December 2000 – February 2010. Job Opening and Labor Turnover program: unpublished research data provided by BLS.

Figure 8
Notional Net Labor Demand

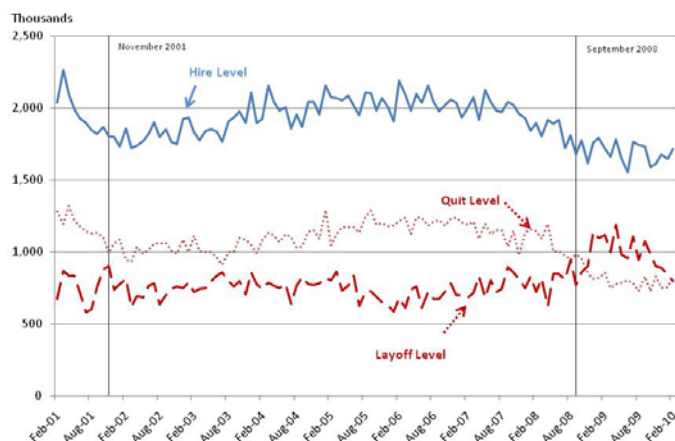


Note: Notional Net Labor Demand is defined as (Job Openings + Job Hires – Separations) as a percent of total employment. Seasonally Adjusted. December 2000 – February 2010. Job Opening and Labor Turnover program: unpublished research data provided by BLS.

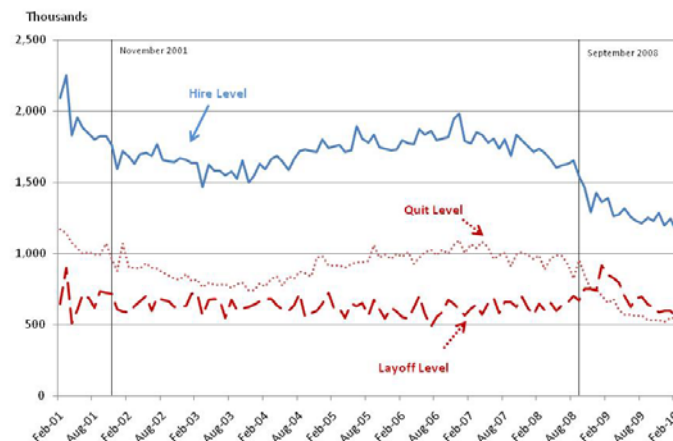
Appendix

Hires, Quits, and Layoffs

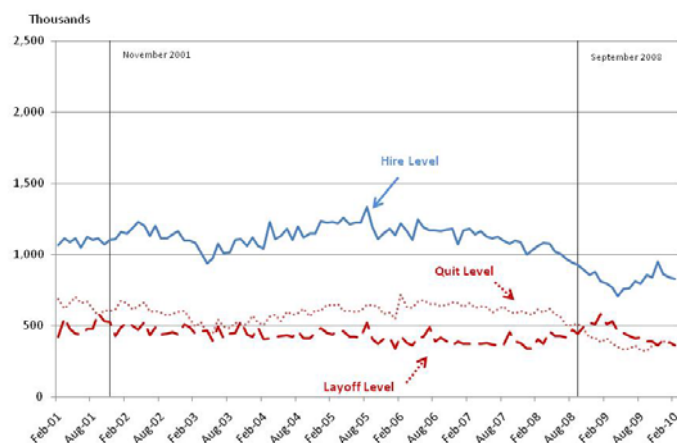
Panel A: Establishments with 1-49 Employees



Panel B: Establishments with 50-249 Employees



Panel C: Establishments with 250+ Employees



Note: Total Hires, Total Quits, and Total Layoffs are in thousands of employees. Seasonally Adjusted. December 2000 – February 2010. Job Opening and Labor Turnover program: unpublished research data provided by BLS.