

[illegible]

						\$0.00			
						\$0.00			
						\$0.00			
						\$0.00			
						\$0.00			
						\$0.00			
						\$0.00			
	12. ESTIMATED TOTAL FUNDING CONTRIBUTIONS FOR ACTIVITY(IES) (refer to instructions)		\$2,116,894.60	\$0.00	\$0.00	\$2,116,894.60	Please note: Grant awards may reflect non-material changes in proposed dates and estimated funding.		

According to the Paperwork Reduction Act of 1995, no persons are required to respond to a collection of information unless it displays a valid OMB control number. The valid OMB control number for this information collection is 1505-0250. Comments concerning the time required to complete this information collection, including the time to review instructions, search existing data resources, gathering and maintaining the data needed, and completing and reviewing the collection of information, should be directed to the Department of the Treasury, Office of Gulf Coast Restoration, 1500 Pennsylvania Ave., NW, Washington, DC 20220.

# RESTORE ACT Direct Component Multiyear Plan Narrative

## Department of the Treasury

OMB Approval No. 1505-0250

**Directions:** Use this form for the Initial Multiyear Plan and any subsequent amendments to an accepted Multiyear Plan. For amendments, include only new and/or materially modified activities.

Multiyear Plan Version (Initial or Amendment Number):	Initial
Date of Initial Multiyear Plan Acceptance:	N/A
Date of Last Multiyear Plan Acceptance:	N/A

Eligible Applicant Name:	Calcasieu Parish Police Jury
Name and Contact Information of the Person to be contacted (POC) on matters concerning this Multiyear Implementation Plan:	
POC Name:	Laurie T. Cormier
POC Title:	Program Coordinator/Coastal Zone Manager
POC Email:	lcormier@calcasieuparish.gov
POC Phone:	(337) 721-3645 ext 7745

### NARRATIVE DESCRIPTION:

1. A description of each activity, including the need, purpose, objective(s), milestones and location. Include map showing the location of each activity.

Calcasieu Parish initial multiyear plan includes one restoration project, Rockefeller Refuge Gulf Shoreline Stabilization Project (ME-35) Phase 2

Description: The Rockefeller Refuge Shoreline Stabilization Project (ME-35) is designed to mitigate the erosion at Rockefeller Wildlife Refuge gulf shoreline by installing rock breakwaters in open water near the shoreline. Calcasieu Parish intends to use \$2,116,894.60 of its available Direct Component funds to complete approximately 0.3 miles of rock breakwater with a light-weight aggregate core which will help to protect this area that is experiencing alarming erosion rates.

The Rockefeller Refuge Shoreline Stabilization Project (ME-35) Phase 2 is a continuation of the Rockefeller Refuge Shoreline Stabilization Project included in Cameron Parish's Multiyear Plan (amendment #1) and a continuation of the CWPPRA ME-18 project. ME-18 is nearing the end of construction of a portion of the overall project that starts at the mouth of Joseph Harbor and proceeds westward for approximately 3.85 miles. The Cameron Parish Police Jury (CPPJ) is currently funding the Community Development Block Grant – Disaster Recovery Rockefeller Shoreline Protection (ME-37) project, which is expected to construct an additional 3,000 linear feet of breakwaters by the end of year 2020. The overall stabilization project is intended to protect the 9.2 mile portion of the Refuge west of Joseph Harbor Bayou.

The Rockefeller Refuge Shoreline Stabilization Project that is included in Cameron Parish Amended Multiyear Plan will install an estimated 6,000 linear feet (1.14 miles) of rock breakwater with a light-weight aggregate core at Cameron Parish portion of the refuge and will extend from the end of the ME-37 project westward for approximately 6,000 feet, to a point approximately 5.5 miles west of Joseph Harbor.

The Calcasieu Parish Police Jury will enter into a subrecipient agreement with the Cameron Parish Police Jury to complete the scope of work for the Rockefeller Refuge Shoreline Stabilization Project (ME-35) Phase 2. The Calcasieu Parish Police Jury will oversee grants management of this project. The Cameron Parish Police Jury will be the subrecipient and will be responsible for final design, bidding, construction and operations and maintenance. This project will help prevent future wetland loss through the reduction of erosion to the Cameron Parish Shoreline. The Rockefeller Refuge is in the eastern portion of Cameron and western portion of Vermilion Parishes and is owned and maintained by the State of Louisiana Department of Wildlife and Fisheries.

Need: The Rockefeller Gulf Shoreline Stabilization project is a coastal restoration project that will serve as a shoreline protection and will assist in protecting an area experiencing alarming erosion rates. Specifically, the Rockefeller Wildlife Refuge Gulf Shoreline



retreats an average of approximately 70 feet/year with a subsequent direct loss of emergent saline marsh. The originally deeded 86,000 acres of Rockefeller Wildlife Refuge has been reduced to about 76,000 acres by coastal erosion.

**Purpose:** The primary eligible activity of the project is to restore and protect the natural resources, ecosystems, fisheries, marine and wildlife habitats, and coastal wetlands of the Gulf Coast region. The proposed project would help mitigate erosion while also promoting natural vegetative colonization of the overwash material. The overall project is intended to protect the 9.2 mile portion of the Refuge west of Joseph Harbor Bayou.

**Objectives:** This specific project will be a continuation of the shoreline protection effort authorized by CWPPRA's ME-18 project and Cameron Parish's ME-37 project for an estimated 6,000 linear feet (1.14 miles) of breakwater with a light-weight aggregate core included in Cameron Parish's multiyear plan. Calcasieu parish intends to use its available direct component funds to install an additional 0.3 miles of rock breakwaters with a light-weight aggregate core, starting at the westernmost end of the ME-37 Rockefeller Refuge Gulf Shoreline Stabilization Project and extending to the west.

**Milestones:** The Calcasieu Parish Police Jury will enter into a subrecipient agreement with the Cameron Parish Police Jury, perform grant oversight and reporting on project process; and grant closeout.

**Location:** Cameron Parish Gulf of Mexico Shoreline. Starting at the westernmost end of the ME-37 Rockefeller Refuge Gulf Shoreline Stabilization Project extending to the west. See attached map.

2. How the applicant made the multiyear plan available for 45 days for public review and comment, in a manner calculated to obtain broad-based participation from individuals, businesses, Indian tribes, and non-profit organizations, such as through public meetings, presentations in languages other than English, and postings on the Internet. The applicant will need to submit documentation (e.g., a copy of public notices) to demonstrate that it made its multiyear plan available to the public for at least 45 days. In addition, describe how each activity in the multiyear plan was approved after consideration of all meaningful input from the public and submit documentation (e.g., a letter from the applicant's leadership approving submission of the multiyear plan to Treasury or a resolution approving the applicant's multiyear plan).

Dates of advertisement 6-29-2020

Public Comment Period 6-29-2020 to 8-13-2020

An advertisement was published in the Lake Charles American Press on June 29, 2020 which is the official journal of record for the Police Jury. There were hard copies available for the public to review at our office (901 Lakeshore Drive, Lake Charles, Louisiana 70601). Also, the Police Jury provided a public notice request on the Parish's website. The Multiyear Implementation and Expenditure Plan was published and made available for public review and comment for a minimum of forty-five (45) days. Once the plan was reviewed and no comments were received, the Police Jury formally submitted the Multiyear Plan to the Department of Treasury.

3. How each activity included in the applicant's multiyear plan narrative meets all the requirements under the RESTORE Act, including a description of how each activity is eligible for funding based on the geographic location of each activity and how each activity qualifies for at least one of the eligible activities under the RESTORE Act.

The project is located within the coastal zone of Cameron parish. The activities for this project meet the eligible activity of 34.201(a) restoration and protection of the natural resources, ecosystems, fisheries, marine and wildlife habitats, beaches, and coastal wetlands of the Gulf Coastal region, because it will serve as a shoreline and will assist in protecting an area experiencing alarming erosion rates. Specifically, the Project is designed to reduce shoreline retreat along this critical stretch of gulf shoreline thus protecting the inland marshes, ridges and infrastructure, as well as promoting shallowing, settling out and natural vegetative colonization of the overwash material landward of the proposed breakwater. This project was included in Louisiana's 2017 Comprehensive Master Plan for a Sustainable Coast.

4. Criteria the applicant will use to evaluate the success of the activities included in the multiyear plan narrative in helping to restore and protect the Gulf Coast Region impacted by the Deepwater Horizon oil spill.

Cameron Parish's draft application includes the following as the method of evaluating the success of the project: The Parish will coordinate with State and Federal agencies to conduct annual surveys that will determine the accretion of sediment and movement of the shoreline towards the structure and the reduction of erosion rates. Calcasieu Parish will coordinate such efforts with the Cameron Parish Police Jury.

The success of the Rockefeller Shoreline Protection Extension Project (ME-35) phase 2 will be measured by surveying land gain. The shoreline will be surveyed, measured, and photographed for documentation of success in compliance with the project specifications. This is routine for ecological projects of this nature in this environment. There are other examples in the near vicinity of this project for easy verification of project success.

5. How the activities included in the multiyear plan narrative were prioritized and list the criteria used to establish the priorities.



The multiyear plan activities were prioritized by Calcasieu Parish through a subjective Project Prioritization Matrix in the Parish's coastal master plan. Seven (7) criteria were established to evaluate projects based on:

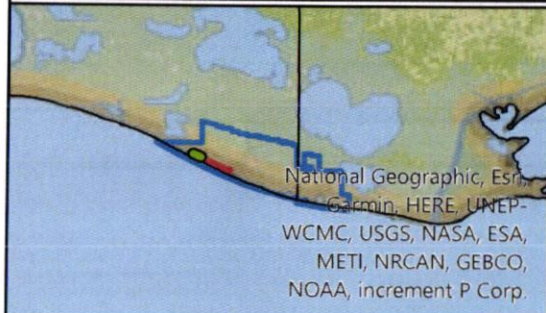
1. Alignment with the Parish's Coastal priorities
2. Consistent with Louisiana's Comprehensive Master Plan for a Sustainable Coast (2017)
4. Leverage Potential; Can this project benefit others in the area
5. Ease of Obtaining Landrights
6. Increase Environmental or Ecological Function
7. Sustainable Land Use and Reduction of loss or Impact of Natural Habitat

Through this process and based on the Parish's Coastal Planning and zoning staff, the parish evaluated and selected this project as the number one priority for funding and implementation.

6. If applicable, describe the amount and current status of funding from other sources (e.g., other RESTORE Act contribution, other third party contribution) and provide a description of the specific portion of the project to be funded by the RESTORE Act Direct Component.

The Calcasieu Parish Police Jury plans to obtain \$2,116,894.60 for RESTORE Direct Component funding from Treasury, then enter into a subrecipient agreement with the Cameron Parish Police Jury to complete the scope of work for the expansion of the Rockefeller Refuge Gulf Shoreline Stabilization Project (ME-35) phase 2 project.

Cameron Parish is designating \$877,112 of RESTORE Act Direct Component funds and \$1,122,888 of Local Match funds toward this project. Louisiana's Coastal Protection and Restoration Authority is designating \$8,671,531 of RESTORE Act Parish Matching funds toward this project.



### Legend

- ME-18
- ME-35
- ME-37

## Rockefeller Refuge Shoreline Stabilization Project

CAMERON PARISH, LOUISIANA

