

RESTORE ACT Direct Component Multiyear Plan Matrix — Department of the Treasury OMB Approval No. 1505-0250

Applicant Name:		St. Mary Parish Government											
1. MULTIYEAR PLAN VERSION (INITIAL OR AMENDMENT NUMBER):		Initial		2a. DATE OF INITIAL MULTIYEAR PLAN ACCEPTANCE (mm/dd/yyyy):		N/A		2b. DATE OF LAST MULTIYEAR PLAN ACCEPTANCE:		N/A			
3. CUMULATIVE DIRECT COMPONENT ALLOCATION AVAILABLE FOR DISTRIBUTION TO APPLICANT:		\$982,361.58		4. TOTAL ALLOCATIONS PLUS KNOWN FUNDS NOT YET DEPOSITED IN TRUST FUND FOR DIRECT COMPONENT:				\$2,015,699.83					
5. Primary Direct Component Eligible Activity Further Described in Application (Static Field)													
6. Activity Title (Static Field)		7. Location (Static Field)		8. Estimated Total Funding Contributions For Proposed Activity(ies)(refer to Instructions)				9. Proposed Start Date mm/dd/yyyy		10. Proposed End Date mm/dd/yyyy		11. Status (refer to Instructions)	
				8a. Direct Component Contribution	8b. Other RESTORE Act Contribution	8c. Other Third Party Contribution	8d. Total Contribution						
Infrastructure projects benefitting the economy or ecological resources, including port infrastructure		Fontenot Boat Launch Improvements Phase I, II, & III		St. Mary Parish		\$982,361.58		\$91,156.89	\$1,073,518.47	9/1/2022.	9/30/2023.	Initial MYP Activity Note: Third Party Contribution Funds will be 100% reimbursed as sufficient Direct Component funds become available.	
Infrastructure projects benefitting the economy or ecological resources, including port infrastructure		Quintana Boat Launch Improvements		St. Mary Parish				\$665,200.80	\$665,200.80	9/1/2022.	9/30/2023.	Initial MYP Activity Note: Third Party Contribution Funds will be 100% reimbursed as sufficient Direct Component funds become available.	
Planning assistance		Morgan City Coastal Resilience Laboratory, Phase I, II, & III		St. Mary Parish				\$129,324.00	\$129,324.00	9/1/2022.	9/30/2023.	Initial MYP Activity Note: Third Party Contribution Funds will be 100% reimbursed as sufficient Direct Component funds become available.	
									\$0.00				
									\$0.00				
									\$0.00				
									\$0.00				
									\$0.00				

						\$0.00		
						\$0.00		
						\$0.00		
						\$0.00		
						\$0.00		
						\$0.00		
						\$0.00		

	12. ESTIMATED TOTAL FUNDING CONTRIBUTIONS FOR ACTIVITY(IES) (refer to Instructions)	\$982,361.58	\$0.00	\$885,681.69	\$1,868,043.27	Please note: Grant awards may reflect non-material changes in proposed dates and estimated funding.
--	---	--------------	--------	--------------	----------------	---

According to the Paperwork Reduction Act of 1995, no persons are required to respond to a collection of information unless it displays a valid OMB control number. The valid OMB control number for this information collection is 1505-0250. Comments concerning the time required to complete this information collection, including the time to review instructions, search existing data resources, gathering and maintaining the data needed, and completing and reviewing the collection of information, should be directed to the Department of the Treasury, Office of Gulf Coast Restoration, 1500 Pennsylvania Ave., NW, Washington, DC 20220.

RESTORE ACT Direct Component Multiyear Plan Narrative

Department of the Treasury

OMB Approval No. 1505-0250

Directions: Use this form for the Initial Multiyear Plan and any subsequent amendments to an accepted Multiyear Plan. For amendments, include only new and/or materially modified activities.

Multiyear Plan Version (Initial or Amendment Number):	Initial
Date of Initial Multiyear Plan Acceptance:	N/A
Date of Last Multiyear Plan Acceptance:	N/A

Eligible Applicant Name:	St. Mary Parish Government
Name and Contact Information of the Person to be contacted (POC) on matters concerning this Multiyear Implementation Plan:	
POC Name:	Henry "Bo" LaGrange
POC Title:	Chief Administrative Officer
POC Email:	hlagrange@stmaryparishla.gov
POC Phone:	337-828-4100 x 500

NARRATIVE DESCRIPTION:

1. A description of each activity, including the need, purpose, objective(s), milestones and location. Include map showing the location of each activity.

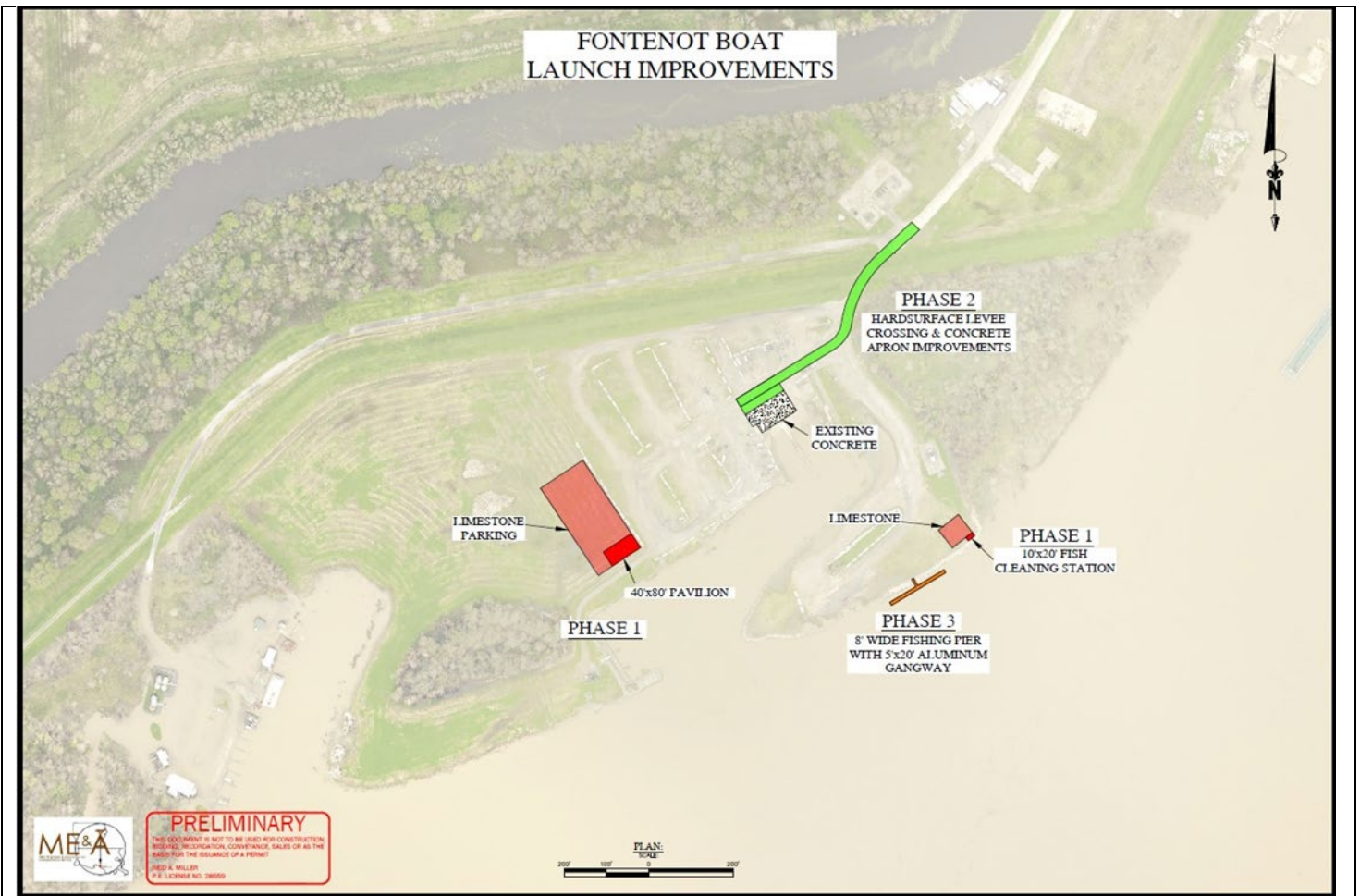
Project 1: Fontenot Boat Launch Improvements

The Fontenot Boat Launch is located on the west bank of the Atchafalaya River at the intersection with the Gulf Intracoastal Waterway. The facility is owned by the St Mary Parish School Board and is currently leased through March 31, 2043. The lease term is 50 years and began on April 1, 1993. The location provides a central location for access to the Atchafalaya Basin for freshwater fishing and the Gulf of Mexico for saltwater fishing. The facility is used by recreational and commercial fishermen, hunters, industry, and government agencies and has continuously undergone improvements to provide all users with convenient, safe access to the Atchafalaya River and adjacent areas. Once constructed, the project's features will be maintained and operated by the St. Mary Parish Government for its estimated useful life.

- **Phase I** – The first phase of the Fontenot Boat Launch Improvements includes the construction of a 40'x80' steel frame pavilion, RV Parking, and a 10'x20' steel frame fish cleaning station. This infrastructure is required to support and expand recreational fishing needs at this location and provide protection from rain and sun. The pavilion is planned as an open-air facility with concrete foundation that will be used for fishing tournaments and a central gathering point for sign-in, weigh-in, post-fishing gatherings, award distribution, entertainment, etc. The pavilion can also be used as a muster point for law enforcement and emergency response teams during floods, oil spills, hurricanes, or other natural disasters. The fish cleaning station will be used by recreational fishermen to clean their catch prior to leaving the facility making it easier to dispose of carcasses in the waterway rather than disposing of them in garbage cans, dumpsters, etc. This improvement will also pair with the pavilion to support and expand recreational fishing, tournaments, etc.
- **Phase II** – The second phase of the Fontenot Boat Launch Improvements would be to construct a hard surfaced access roadway crossing the Atchafalaya Basin flood protection levee. The current access

roadway is aggregate surfacing which requires continuous maintenance to repair scour areas and to maintain adequate condition for vehicular traffic. The aggregate surfacing in this location is on a steep slope and is susceptible to scour due to rain and water being emptied from boats and their respective trailers. The proposed improvements would connect to the existing concrete roadway (River Road) and continue to the boat launch apron. Also included in this phase would be an expansion of the existing concrete boat launch apron to extend the staging area. This is also an effort to reduce maintenance and scour due to rainfall runoff and water from boat launching and retrieving operations.

- **Phase III** – The third phase of the Fontenot Boat Launch Improvements would be to construct a timber fishing pier to allow fishing access to the Atchafalaya River for those recreational anglers that do not have boats. This project is an effort to continue to upgrade the overall facility and accommodate all levels of recreational users. The fishing pier would be constructed to be ADA accessible to allow those with decreased mobility the opportunity to fish or enjoy the outdoors from an accessible location.
- **Need** – The project is needed to improve and increase recreational use for a different class of users – that being for recreational vehicles (RVs). The current facility has a high user rate of recreational boaters to participate in fishing and hunting within the Atchafalaya Basin, Floodway, and marshes, including the Atchafalaya Wildlife Management Area. The inclusion of RV facilities at this location will provide a convenient crossover for those users with RVs and boats looking for overnight accommodations.
- **Purpose** – The purpose of this project is to provide a convenient facility for boaters who also have RVs, though could also be used by RV users looking for waterfront facilities.
- **Objective** – The objective of this project is to provide 14 RV sites with water, sewer and electrical hookups. RV sites and the access roadway will be constructed of compacted aggregate surfacing.
- **Project Milestones** - Construction documents finalized, and plans advertised for public bids; Award Construction contract and construction commencement; Complete Construction
- **Project Location** – See below



Project 2: Quintana Boat Launch Improvements

The Quintana Boat Launch is located just north of Cypremort Point on the west side of La. Hwy. 319 and provides direct access to Vermilion Bay and the Gulf of Mexico. The facility is owned by the St Mary Parish School Board and is currently leased through December 31, 2090. The lease term is 99 years and began January 1, 1991. The facility is used by recreational and commercial fishermen, hunters, industry, and government agencies and has continuously undergone improvements to provide all users with convenient, safe access to the waters around Cypremort Point. Once constructed, the project's features will be maintained and operated by the St. Mary Parish Government for its estimated useful life.

The proposed improvements include reconstruction of the timber docks, portions of the concrete boat launch and the aggregate surface entry/exit area. The timber docks, boat ramp apron and access area are being inundated on a regular basis due to above average water levels, subsidence, and local weather conditions. When this inundation occurs, the docks and boat launch become slippery, and it becomes unsafe and difficult to launch and retrieve boats. The proposed improvements are to reconstruct and elevate the timber docks, elevate the upper end of the concrete boat launch, elevate the boat launch apron, and elevate the aggregate entry/exit area.

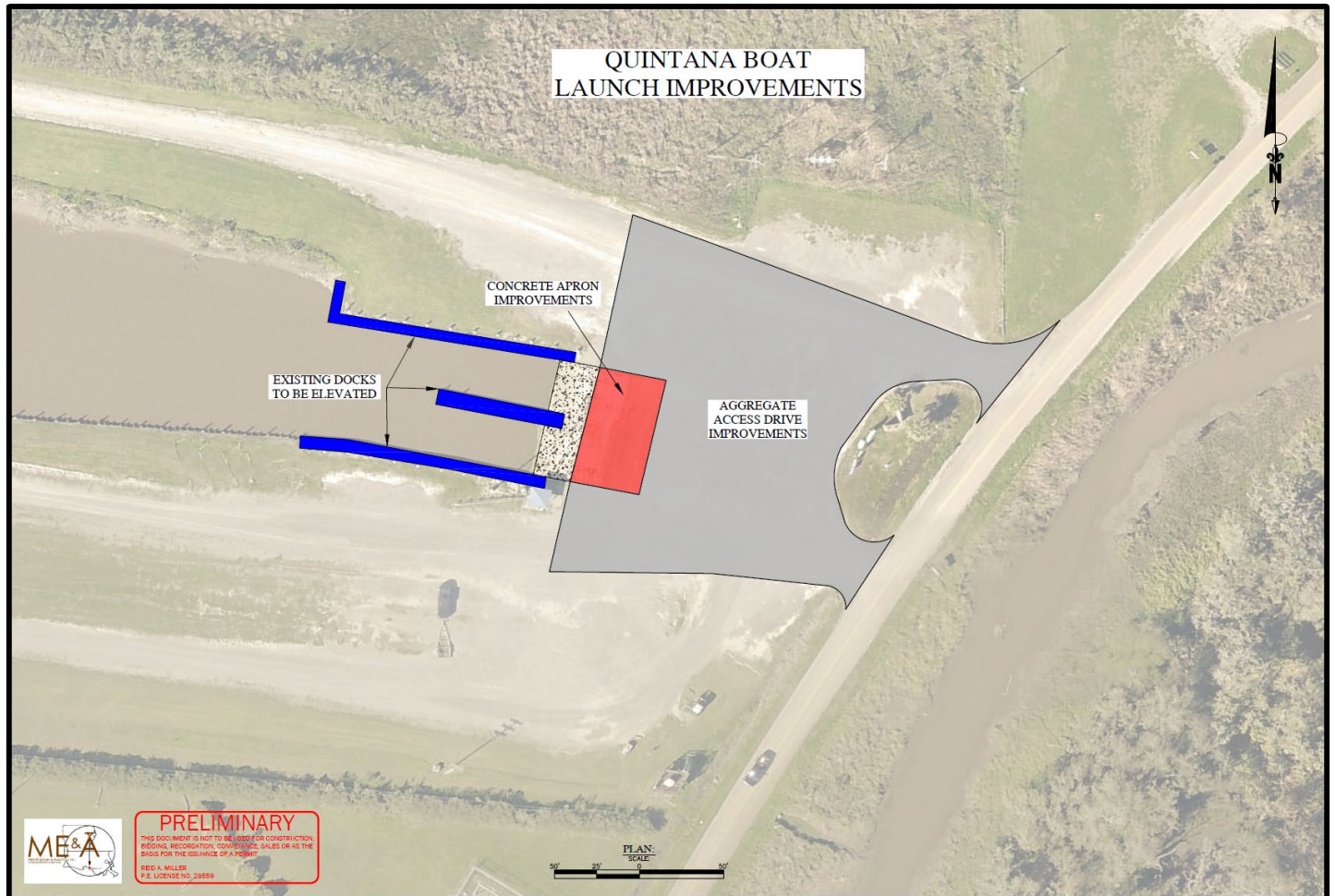
Need: The project is needed to improve the existing boat ramp and timber docks. The existing docks are of timber construction and due to the extreme environment (sun, water, waves, etc.) are experiencing typical deterioration common to this type of facility. Also during high tides, the docks and a large portion of the boat ramp and parking are going underwater, making the facility unusable and/or unsafe.

Purpose: The purpose of this project is to renovate the timber docks to include replacing the timber supports, decking, etc. and raising the elevation to prevent inundation at high tide. The project will also include raising a portion of the concrete boat ramp and parking areas to prevent inundation at high tide.

Objectives: The objective of this project is to renovate and elevate 2358 square feet of timber dock, reconstruct 2340 square feet of concrete boat ramp and elevate 0.72 acres of limestone parking.

Milestones: Construction documents finalized and plans advertised for public bids; Award Construction contract and construction commencement; Complete Construction

Location:



Project 3: Morgan City Coastal Resilience Laboratory

St. Mary Parish will partner with the Water Institute of the Gulf (the Institute) in the development of a strategic plan for the development of a coastal resilience laboratory in Morgan City, Louisiana. In 2018, citizens and decision-makers in St. Mary Parish, Louisiana commissioned the Urban Land Institute (ULI) to identify strategies to enhance job creation and reduce population loss throughout St. Mary Parish and the Tri-City Region, especially Morgan City and Berwick. The ULI determined that the creation of a coastal resilience laboratory should be a key long-term goal for Morgan City and the region. Morgan City is an ideal inhabited location for the establishment of such a laboratory, given the city's rich history of technological innovation, land, water and topographical features for piloting projects for implementing, commercialization, and demonstration, and low

levels of environmental risk relative to surrounding communities. The coastal, riverine, and basin locale presents the setting for authentic entrepreneurial innovation and application of the work of academic and partner institutions.

To support St. Mary Parish in the development of a coastal resilience laboratory, the Institute proposes to build stakeholder consensus and develop a strategic plan using the PrOACT (Problem, Objectives and Measures, Alternatives, Consequences, and Trade-offs) Structured Decision-Making (SDM) framework. PrOACT is a method for creating a clear and concise summary of a problem and the possible solutions to it so that decision-makers can clearly see the consequences of each choice. The framework helps define the problem under consideration, determine who needs to be involved in the process of developing alternatives (which also helps create a shared understanding of how people with different interests and perspectives view different options), and compare the trade-offs created by each alternative solution to the problem.

PROJECT OBJECTIVES

Objective 1: Evaluate the state of the science/information related to the Parish and Tri-State Region's vulnerability to shocks (extreme events/disasters) and stresses (long-term social, economic, environmental issues). A full understanding of these is needed to define the problems that the lab will address and determine the objectives.

Objective 2: Work with the Parish and other technical stakeholders to identify and evaluate economic development programs and priorities throughout the Parish and Tri-State Region and identify strength and weaknesses related to local and regional coordination and communication. The objective will examine existing economic development priorities in St. Mary Parish and identify opportunities for coordination.

Objective 3: Work with the Parish and stakeholders to identify management alternatives that are economically feasible and acceptable and develop a long-term strategic plan for the development of the coastal resilience laboratory.

PROJECT MILESTONES

Milestone 1: Analyze existing monitoring and modeling data; work with experts with local knowledge of the Tri-City Region to evaluate the state of science, risk and gaps/needs in St. Mary Parish

Milestone 2: Engage St. Mary Parish government officials, industry, academia, and members of the community to participate in Phases 1 and 2 of the PrOACT cycle to aid in project planning phases.

Milestone 3: Link Qualitative Data to PrOACT Cycle

Milestone 4: Engage St. Mary Parish government officials, industry, academia, and members of the community to participate in Phases 3 and 4 of the PrOACT cycle to aid in project planning phases.

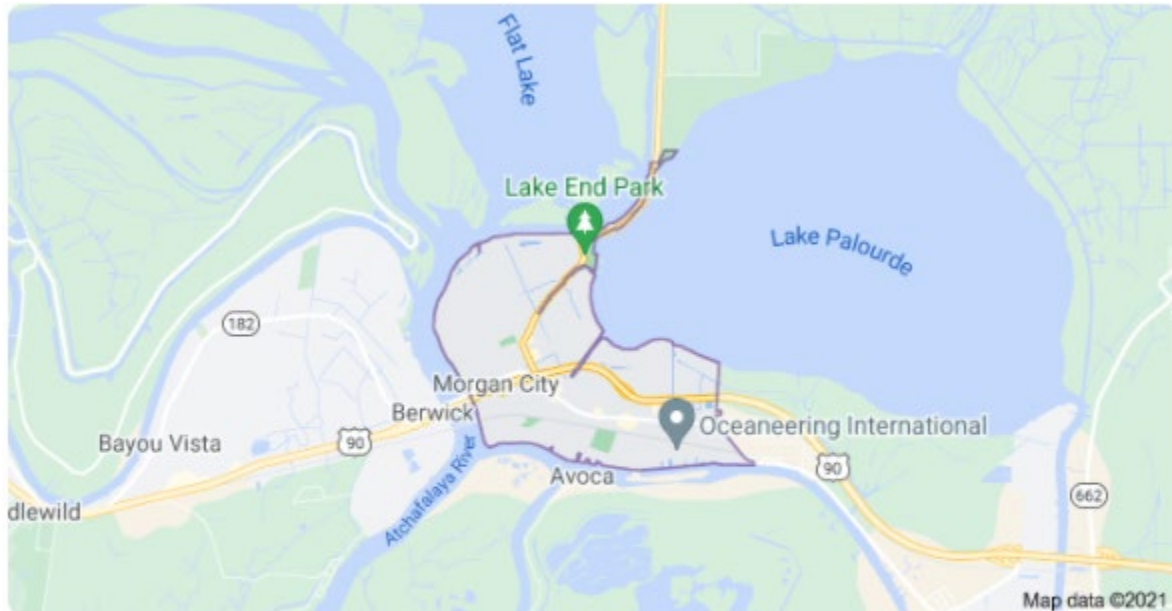
Milestone 5: Engage St. Mary Parish government officials, industry, academia, and members of the community to participate in Phases 5 and 6 of the PrOACT cycle with a goal of coming to consensus and selecting an alternative or more than one preferred alternative.

Milestone 6: Develop an action plan that drives implementation of the selected alternative(s) toward MCCRL goals; and annual work plans that turn objectives into stepwise actions that lead toward long-term strategic goals.

Milestone 7: Design data collection and management program to provide sufficient information to support decision making and drive toward goals identified in the selected alternative(s).

Milestone 8: Provide technical assistance with policy, regulatory, and funding processes for program and project implementation. Implement adaptive management procedures for monitoring, and for modifying strategies

Location:



Morgan City
Louisiana 70380

2. How the applicant made the multiyear plan available for 45 days for public review and comment, in a manner calculated to obtain broad-based participation from individuals, businesses, Indian tribes, and non-profit organizations, such as through public meetings, presentations in languages other than English, and postings on the Internet. The applicant will need to submit documentation (e.g., a copy of public notices) to demonstrate that it made its multiyear plan available to the public for at least 45 days. In addition, describe how each activity in the multiyear plan was approved after consideration of all meaningful input from the public and submit documentation (e.g., a letter from the applicant's leadership approving submission of the multiyear plan to Treasury or a resolution approving the applicant's multiyear plan).

The St. Mary Parish Government held a public meeting on December 16, 2021 in Franklin, LA. The public meeting was advertised in the Parish's official journal on December 15, 2021. Following the meeting, public notices soliciting public comments from interested parties were published in the Parish journal on December 22, 2021 and December 29, 2021 and posted to the St Mary Parish website. Comments would be received December 16, 2021 through January 31, 2022. An article was also placed in the St. Mary and Franklin Banner-Tribune publication on January 5, 2022 describing the proposed RESTORE Act projects and encouraging readers to provide comments.

St. Mary Parish Government did not receive any comments during the 45-day public comment period. However, three letters of support were received. St. Mary Excel, The City of Morgan City and Ochsner St. Mary both submitted a letter fully endorsing the use of RESTORE funds in the planning for a resilience lab for the coastal Morgan City and St. Mary Parish, Louisiana.

At a February 9, 2022 regular meeting, the St. Mary Parish Council adopted and approved by Resolution the final multiyear plan, approves the submission of the plan to the U.S. Treasury Department for review and acceptance.

3. How each activity included in the applicant's multiyear plan narrative meets all the requirements under the RESTORE Act, including a description of how each activity is eligible for funding based on the geographic location of each activity and how each activity qualifies for at least one of the eligible activities under the RESTORE Act.

Project 1: Fontenot Boat Launch Improvements

Project 1 is located in St. Mary Parish within the Gulf Coast Region and is eligible for Direct Component funding as an infrastructure project benefitting the economy of ecological resources. This project includes the planning for improvements and construction of public facilities. It also is consistent with the Comprehensive Land Use Plan Certification requirements for Louisiana as stated in Chapter 3 of the St. Mary Parish Comprehensive Plan, Ordinance No. 1560, December 2002. This project will be implemented by the St. Mary Parish Government.

Project 2: Quintana Boat Launch Improvements

Project 2 is located in St. Mary Parish within the Gulf Coast Region and is eligible for Direct Component funding as an infrastructure project benefitting the economy or ecological resources. This project includes reconstruction and elevation of public facilities. The project will be implemented by the St. Mary Parish Government.

Project 3: Morgan City Coastal Resilience Laboratory

Project 3 is located in St. Mary Parish within the Gulf Coast Region and is eligible for Direct Component primarily as a Planning Assistance activity and secondarily as a workforce development and job creation activity. This project includes the planning of a facility to support economic development by enhancing job creation and preventing population loss. The project will be implemented by the St. Mary Parish Government.

4. Criteria the applicant will use to evaluate the success of the activities included in the multiyear plan narrative in helping to restore and protect the Gulf Coast Region impacted by the Deepwater Horizon oil spill.

Project 1: Fontenot Boat Launch Improvements: The success of this activity will be measured by the completion of upgrades to the Fontenot Boat Launch and the number of new RV users.

Project 2: Quintana Boat Launch Improvements: The success of this activity will be measured by the reconstruction and improved safety of the Quintana Boat Launch.

Project 3: Morgan City Coastal Resilience Laboratory: The success of this activity will be measured by the planning, evaluation, and development of a strategic plan for the Morgan City Coastal Resilience Laboratory. There are no construction costs built into the budget. Following the identification of goals and objective for the lab, St. Mary Parish and stakeholders will evaluate a full suite of potential alternatives, including the possible construction of a physical facility.

5. How the activities included in the multiyear plan narrative were prioritized and list the criteria used to establish the priorities.

The projects included in the Multiyear Plan were evaluated and prioritized by the St. Mary Parish Government. Projects were selected by the following criteria:

Potential Positive Impacts

Project Need

Constructability of the Project.

Projects were prioritized by the Parish department heads by discussing potential positive impacts, project need, and constructability of the project, and choosing the top projects by consensus. Potential positive impacts

included how well the project addressed Restore Act Components. Discussions regarding constructability of the project included local engineers for input. Project Needs were also discussed among Parish department heads and included the Mayors of the Municipalities.

6. If applicable, describe the amount and current status of funding from other sources (e.g., other RESTORE Act contribution, other third party contribution) and provide a description of the specific portion of the project to be funded by the RESTORE Act Direct Component.

The projects included in the Multiyear Plan will be 100% funded with RESTORE Act funds. The St. Mary Parish Government general budget will have funding available for the entire project costs at the beginning of bidding (per public bid law) and reimbursements will be requested from the Restore funds as they become available. The local funds used to supplement the currently available Direct Component Funds will be \$885,681.69. Treasury will review and verify allowability if all pre-award costs that are submitted for reimbursement as specified in Treasury's RESTORE Act Direct Component Funding Opportunity Announcement and in Treasury's RESTORE Act Direct Component Frequently Asked Questions (#33-35).